

Dunkettle Progress Update

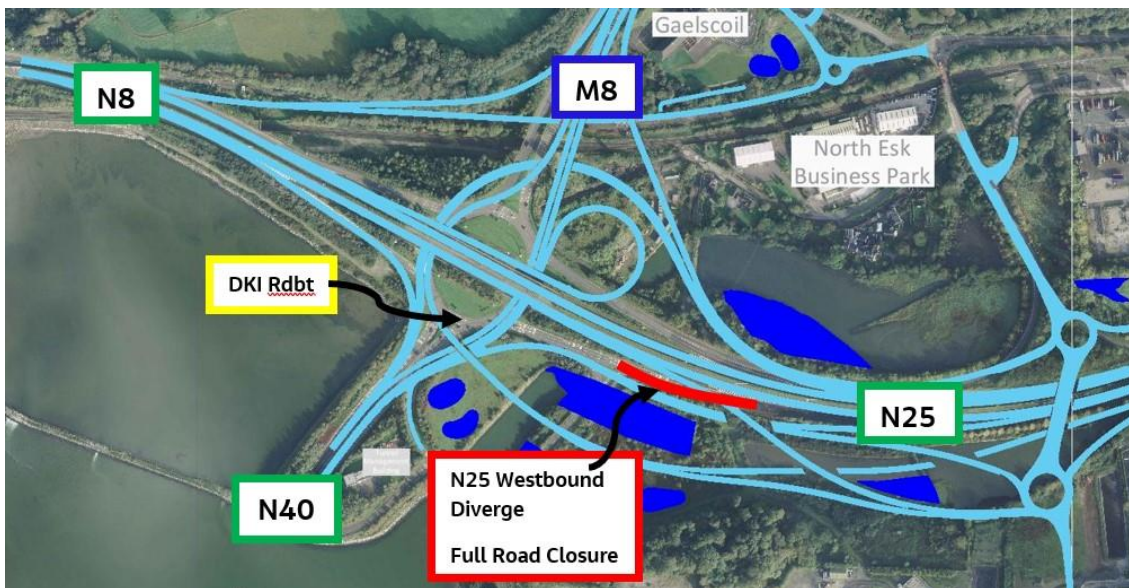
24th June 2023



Twitter



Website



- The N25 Westbound diverge to the Dunkettle Interchange Roundabout was closed as planned at 9 PM on Friday 23d June 2023 and remains currently closed with traffic being diverted through Little Island on the R623.

- Works are progressing well with earthworks now complete, and paving works underway - see photograph below.



Pavement works ongoing for the Link M tie in at the N25 Westbound Diverge to the Interchange Roundabout.

- We now hope to reopen the N25 Westbound Diverge several hours ahead of schedule, at approximately 4am on Sunday 25th June 2023.

This week's Progress Update video shows the current status of Link K which is due to open over the summer months.



Dunkettle Live Traffic App



Click on the icon above to see the benefits of the Dunkettle Live App.



Dunkettle Live App: Download from [Apple App store](#) or from [Google Play store](#)

As always, if there are any queries or comments in relation to these works, please contact us at:

Phone: 1800 810077 (at any time), **Email:** roadconstruction@ccc-site.com.

Further information on the Dunkettle Scheme can be accessed www.dunkettle.ie.

Real time traffic information can be accessed via www.dunkettletraffic.ie or on the Dunkettle Live App ([Apple App store](#) and [Google Play store](#)).

New subscribers to the newsletter can register: www.dunkettle.ie/newslettersignup



[More at www.Dunkettle.ie](http://www.Dunkettle.ie)



Your email address is on a list that we use to keep you informed on the progress on the N40 and Dunkettle Interchange works.

Want to change how you receive these emails?

You can [update your preferences](#) or [unsubscribe from this list](#).
