

# Dunkettle Progress Update

*14th February 2020*

[More Information at www.Dunkettle.ie](http://www.Dunkettle.ie)

## Dunkettle Interchange Project - Advance Works

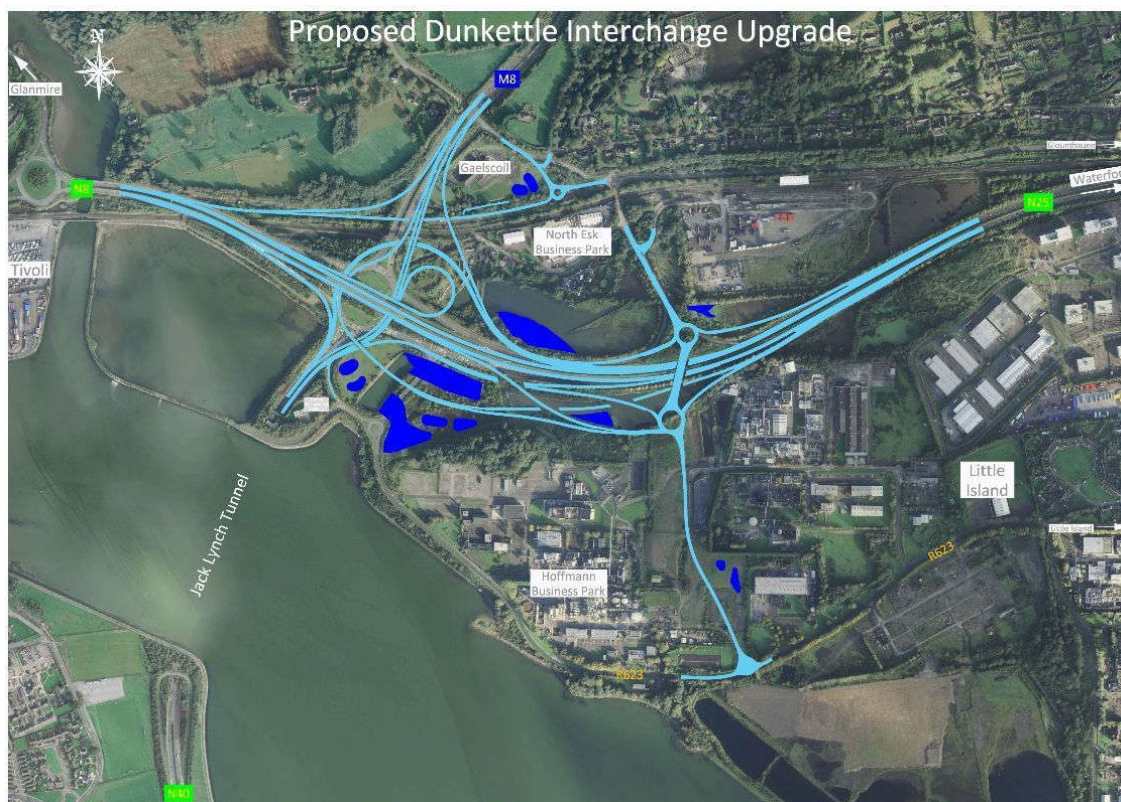


Twitter



Website

*Upgrade Dunkettle to a largely free-flow interchange to alleviate traffic congestion*



- A hard shoulder closure will be in place on the N25 eastbound between the Dunkettle Roundabout at the eastern end of the Lower Glanmire Road and the N25 eastbound off-slip to the Dunkettle Interchange Roundabout for the coming weeks. Traffic management measures will be installed under night-time working on the night of Sunday 16th February 2020 and we expect the hard shoulder closure to be in place for approximately 8 to 10 weeks. It is hoped that the traffic impact of the hard shoulder will be minimal given that no running lanes are being closed. The hard shoulder closure is required to facilitate improvement works to the existing Dunkettle River Bridge where parapet upgrade works are required to cater for the new pedestrian/cycleway over the bridge.
- Earthworks construction for the free flow link road from the N8 (Lower Glanmire Road Outbound from Cork City) to the M8 (Dublin Motorway Northbound) in the area immediately west of the M8 is continuing with the drainage works element commencing during week ending Friday 21st February 2020.

- The hard shoulder closure remains in place on the M8 northbound (Cork to Dublin) for construction works associated with the cycle/pedestrian route adjacent to the N8 to M8 Cork to Dublin road link - no significant disruption to traffic is anticipated.
- Works are continuing on the Dunkettle local road near Gaelscoil Uí Drisceoil. These works are associated with development of the new road layout in this area.
- Works on the 600mm diameter watermain diversion in the North Esk area of the site are nearing completion. These works should be fully complete before the end of February 2020.
- A stop/go system will be in place on the R623 Little Island road at Inchera (at the western end of the Island) from Monday 17th February 2020 for approximately 2 weeks. These stop/go works will be progressed during off peak periods in order to minimise disruption to traffic.
- As shown in the photograph below, protective works required for the gas transmission main near the Pfizer northern boundary are continuing. These works are likely to continue until April/May 2020 in consultation with Gas Networks Ireland.
- Further details on the works items above and any upcoming works will continue to be provided via the weekly progress updates.



*Dunkettle Interchange Upgrade: Watercourse diversion culvert near Gaelscoil Uí Drisceoil*



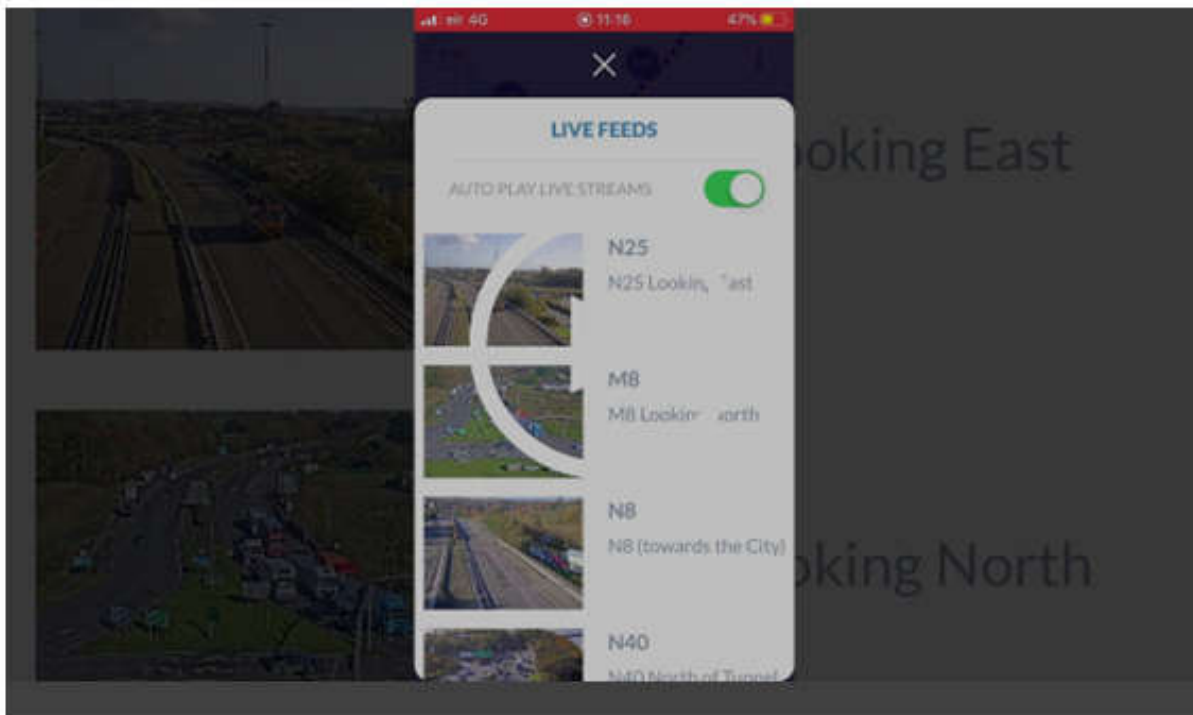


*Dunkettle Interchange Upgrade: Works ongoing south of the N25, near the Pfizer boundary*



*Dunkettle Interchange Upgrade: Works ongoing near the Cork-Midleton Railway line*

## Dunkettle Interchange Project - Dunkettle Live Traffic App



Link to video: [Dunkettle Live app](#)



Dunkettle Live App: Download from [Apple App store](#) or from [Google Play store](#)

- The traffic app Dunkettle Live is available as a free download on the [Apple App store](#) and the [Google Play store](#).
- The video above demonstrates the main features of the app.
- As always, we would welcome any comments in relation to the app to [roadconstruction@ccc-site.com](mailto:roadconstruction@ccc-site.com).

As always, if there are any queries or comments in relation to these works, please contact us at:

**Phone:** 1800 810077 (at any time),  
**Email:** [roadconstruction@ccc-site.com](mailto:roadconstruction@ccc-site.com).



Further information on the Dunkettle Scheme can be accessed at: [www.dunkettle.ie](http://www.dunkettle.ie).

Real time traffic information can be accessed via [www.dunkettletraffic.ie](http://www.dunkettletraffic.ie) or on the Dunkettle Live App ([Apple App store](#) and [Google Play store](#)).

New subscribers to the newsletter can register: [www.dunkettle.ie/newslettersignup](http://www.dunkettle.ie/newslettersignup)