

# Dunkettle Progress Update

*30th April 2021*

[More Information at www.Dunkettle.ie](http://www.Dunkettle.ie)



[Twitter](#)

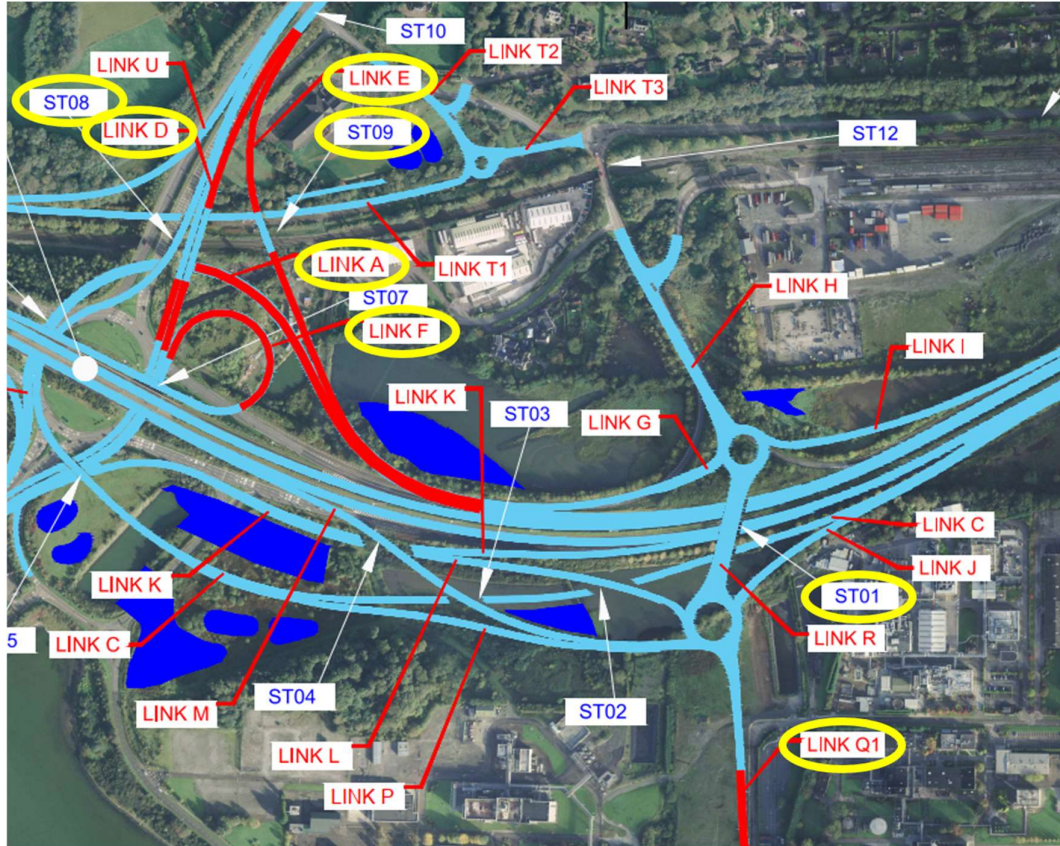


[Website](#)

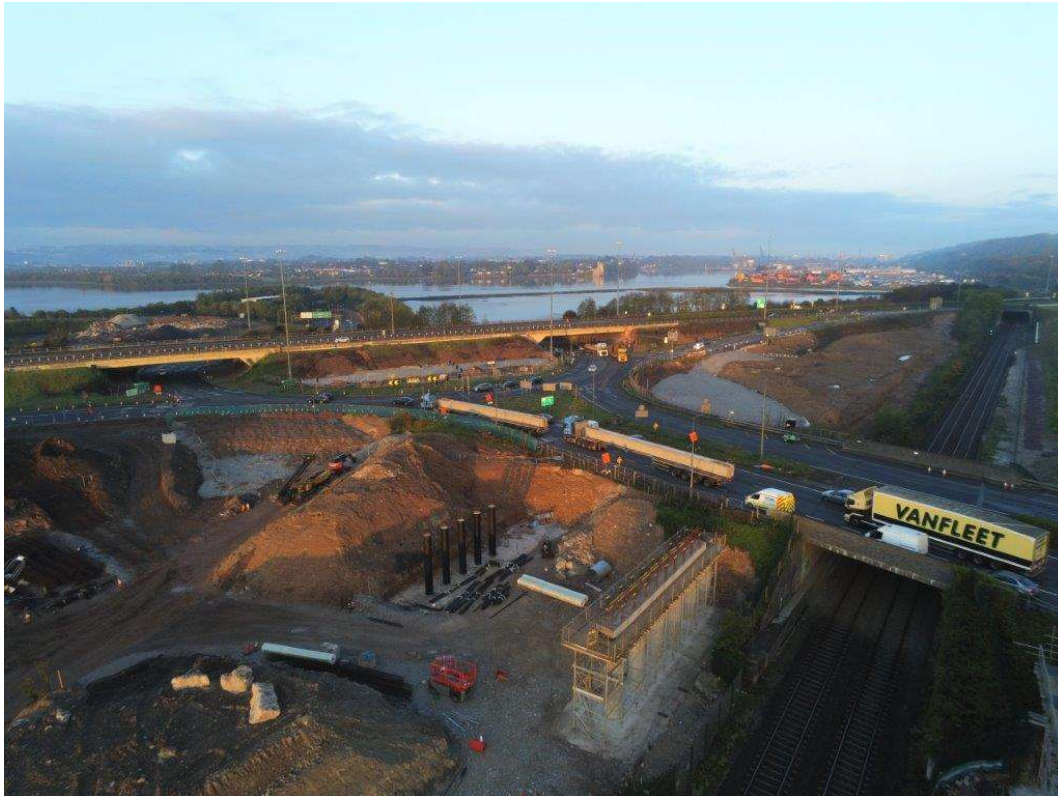
## Dunkettle Interchange Upgrade Project

*Upgrade Dunkettle to a largely free-flow interchange to alleviate traffic congestion.*

- Works are continuing on structures ST01, ST08 & ST09 along with ground improvement works at Links A,D,E, F & Q both north and south of the N25 with these areas indicated on the graphic below.



- At the two new rail crossings, Structures ST08 and ST09 the first two of the precast concrete bridge beams for ST08 were delivered this morning – see photograph below.



**Precast concrete beams for ST08 being delivered to site this morning approaching the Dunkettle Interchange Roundabout via the M8 southbound**

- Over the course of Tuesday, Wednesday and Thursday night of next week we will continue to take delivery during off peak hours (after 8pm) of the remaining 38 beams required for the works to be completed next week.
- The beams will be installed under night time rail possessions on Tuesday, Wednesday and Thursday night of next week. Both beam spans of ST09 will be installed over the railway line and the beams

spanning the proposed Link T1 will also be placed, while at ST08 the railway span beams will be installed.



**Precast concrete beams delivery via the N25 eastbound**

- The fast lane/lane 2 closures in place both eastbound and westbound on the N25 will remain in place for the next 6 weeks approximately to facilitate works to the northern central pier of ST01. This will allow the completion of the northern central pier to the point where it will be ready to receive bridge beams. Thereafter a further TM switch will be implemented to facilitate completion of



the southern central pier.

- The northern abutment of ST01 is also currently being progressed with preparatory works ongoing for the installation of the columns – see photograph below.



**Preparation for the installation of the columns for the ST01 northern abutment**

- Installation of Culvert 12 is ongoing east of the M8 which extends an existing culvert under the proposed footprint of Link D & E.

- Earthworks ground improvement measures are ongoing with the installation of vertical drains north of the N25 and filling works to Link Q1 being progressed south of the N25.
- As part of the upcoming works to extend structures ST06 & ST07 at the Dunkettle Interchange Roundabout, off peak lane closures of the inner ring of the roundabout are required, this will continue intermittently over the coming period during off-peak daytime hours.
- A reminder that the temporary reduced speed limit of 60 km/hr for the Dunkettle site area is in place and motorists are requested to abide by the new speed limit to enhance the safety of the personnel working on site and road users themselves also.

---

## N40 Intelligent Transport Systems

*Installation of gantry mounted Variable Message Signs and other infrastructure to display traffic information such as journey times.*

Works will continue next week on the ITS sites as follows:

- On the N40 works will continue between Mahon Point and the Bloomfield Interchange in both directions with little impact on traffic. Finishing works are ongoing with concrete footpaths for future maintenance works being progressed. A number of road crossings were completed during the week in the vicinity of the Mahon Point Interchange under night time closures.
- The works on the M8 southbound are nearing completion of the civil elements with safety barrier installation being progressed this week. The removal of the traffic management will commence next Thursday night and will be completed on the following week – see photograph below.



**Safety barrier installation ongoing on the M8 southbound**

- On the N25, the gantry foundations in the central median for the two portal gantries to be installed have been poured, the focus here will now move towards the installation of safety barrier and the completion of finishing works. The fast lane/lane 2 closures will remain in place both eastbound and westbound to facilitate these works for the next 2 weeks approximately, however it is hoped that the extent of the traffic management will be reduced by 500m approximately at the eastern side by the end of next week – see photograph below.

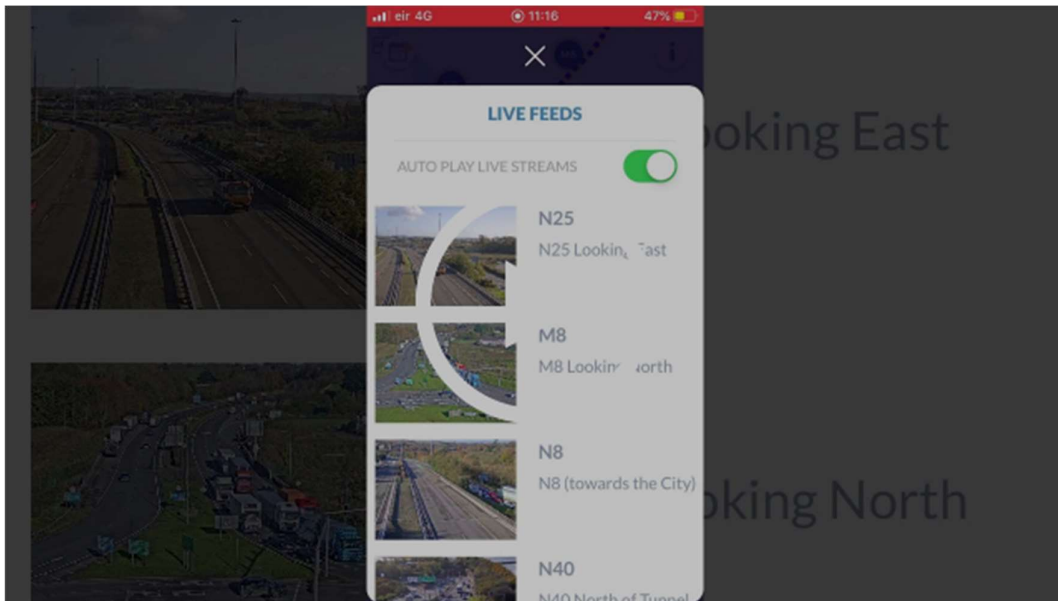




**Piled portal gantry foundation with steel fixed and holding down bolts in place ready to receive the formwork**

---

# Dunkettle Live Traffic App



- Traffic levels have remained at 75% of pre-Covid levels since the full reopening of schools after Easter.



**Dunkettle Live App: Download from [Apple App store](#) or from [Google Play store](#)**

---

As always, if there are any queries or comments in relation to these works, please contact us at:

**Phone:** 1800 810077 (at any time), **Email:** [roadconstruction@ccc-site.com](mailto:roadconstruction@ccc-site.com).



Further information on the Dunkettle Scheme can be accessed [www.dunkettle.ie](http://www.dunkettle.ie).

Real time traffic information can be accessed via [www.dunkettletraffic.ie](http://www.dunkettletraffic.ie) or on the Dunkettle Live App ([Apple App store](#) and [Google Play store](#)).

New subscribers to the newsletter can register: [www.dunkettle.ie/newslettersignup](http://www.dunkettle.ie/newslettersignup)

---

Your email address is on a list that we use to keep you informed on the progress on the N40 and Dunkettle Interchange works.

Want to change how you receive these emails?  
You can [update your preferences](#) or [unsubscribe from this list](#).

---