

Dunkettle Progress Update

23rd July 2021

[More Information at www.Dunkettle.ie](http://www.Dunkettle.ie)



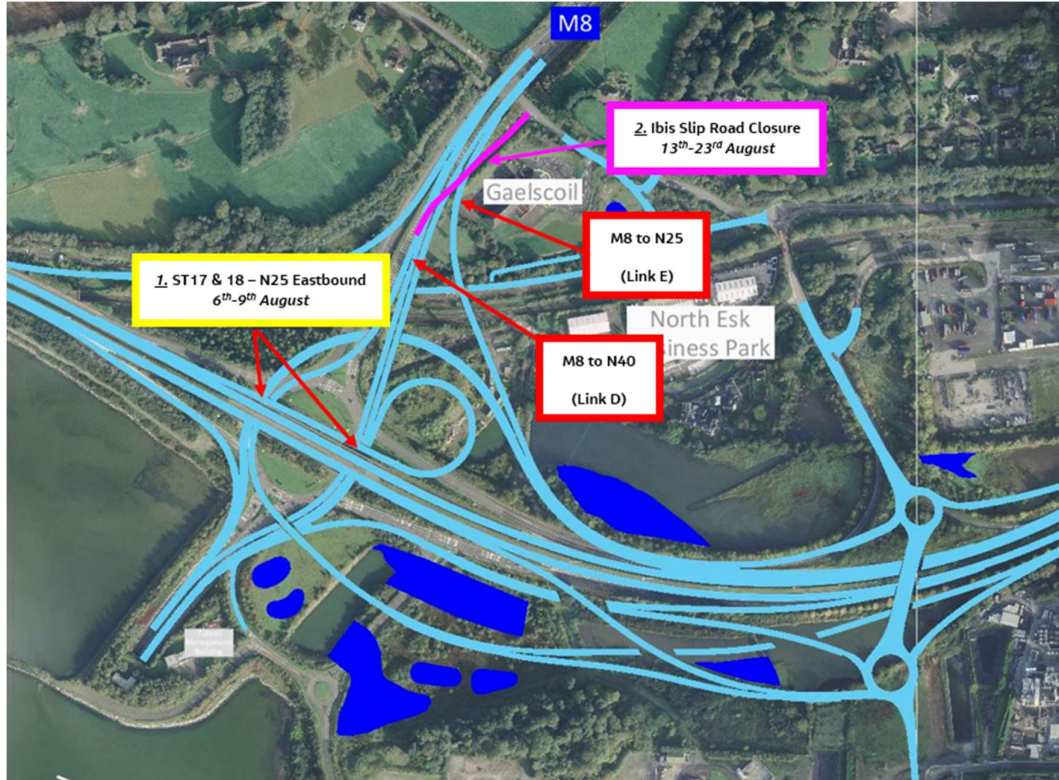
[Twitter](#)



[Website](#)

Dunkettle Interchange Upgrade Project

- Works are continuing on structures ST01, ST06, ST07, ST08, ST09, ST10, ST11, ST14 along with Retaining Wall RW05. Ground improvement and earthworks filling for the Link roads both north and south of the N25 are also ongoing.



Locations of upcoming major Traffic Management Interfaces

- As noted in our previous newsletters, there will be a significant amount of works being undertaken on the live carriageways over the course of the month of August and continuing into the month of September. The locations and indicative dates for the first two areas are detailed on the layout plan above and are as follows:

1. The N25 eastbound will be closed over the Dunkettle Interchange Roundabout section to allow the existing waterproofing to be replaced on the two existing bridges. Traffic will be diverted locally via the off slip for the main roundabout and it will merge via

the on slip at the eastern side. The works will be carried out from 20:00 on Friday 6th of August with the road to be fully reopened by 05:00 on Monday 9th August. As these works are particularly susceptible to weather conditions, the dates may be subject to change but road users will be notified of any changes in advance.

2. The Ibis slip road from the L-2998 to the M8 southbound will be closed for 10 days over the course of two weekends from Friday 13th August at 09:30 to Monday 23rd August at 05:00. This is required in order to allow the tie in of two of the new Link roads D & E (see plan above) to the M8 southbound. Traffic will be diverted locally via the Little Island Interchange and also through Glanmire.

While the works above are being scheduled with a view to minimising disruption, some delays, particularly at peak times are inevitable.

- Works will continue next week at the Dunkettle Interchange Roundabout with the temporary works soil nailing being carried out for ST06 & ST07. It will be necessary to close lanes at off peak times on the roundabout and also on the approaches in order to gain safe access to the works – see photograph below



Soil nailing and piling works ongoing at the Dunkettle Interchange Roundabout.

- Ground improvement works for the earthworks embankments will continue south of the N25 in the vicinity of ST01 from early next week. This will be very noticeable to commuters on the N25 westbound – see photograph below.



General earthworks filling ongoing at Link I north of the N25 eastbound.

- A reminder that the temporary reduced speed limit of 60 km/hr for the Dunkettle site area is in place and motorists are requested to abide by the speed limit in the interests of the safety of the personnel working on site and road users themselves also.

Please see hereunder link to a recent drone video showing the current works on site in the vicinity of Link Q1 and ST01:



N40 Intelligent Transport Systems

Installation of gantry mounted Variable Message Signs and other infrastructure to display traffic information such as journey times.

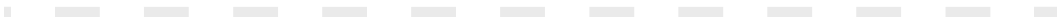
Works will continue next week on the ITS sites as follows:

- The completion of electrical works will continue over the coming period at the individual ITS sites with no impact on traffic.

- The installation of sub-ducting for the broadband supply for the ITS sites will continue by night on the N25, N40 and the M8 over the coming period with local hard shoulder and lane closures in place as necessary with minimal impact on traffic.
- In total 9 out of 12 of the structural steel elements for the current phase of ITS works are now in place, with the remainder to be installed over the month of August – see photograph below.

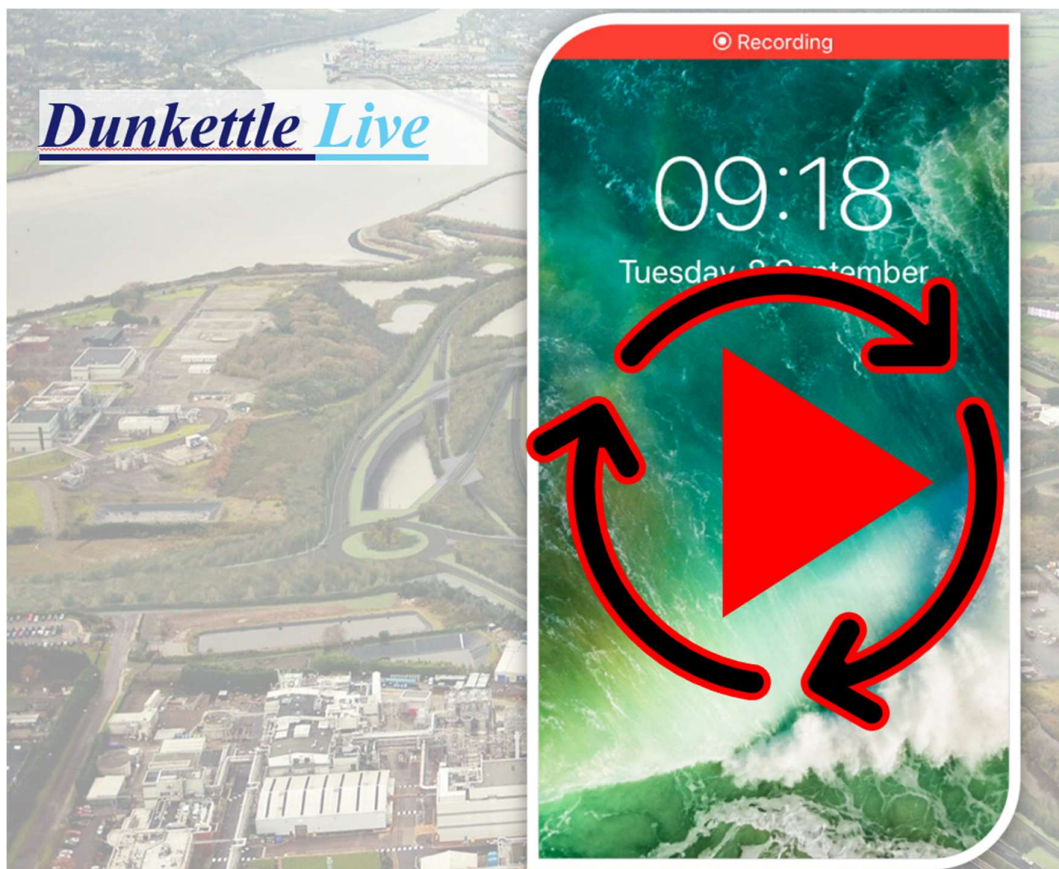


Structural steel portal gantry on the N40 eastbound with an Enhanced Message Sign and Lane Control Signs in place.



Dunkettle Live Traffic App

- Traffic levels have increased following the recent lifting of some of the Covid 19 restrictions with traffic currently running at approximately 90% of pre-Covid levels.



Click on the icon above to see the benefits of the Dunkettle Live App.



Dunkettle Live App: Download from [Apple App store](#) or from [Google Play store](#)

As always, if there are any queries or comments in relation to these works, please contact us at:

Phone: 1800 810077 (at any time), **Email:** roadconstruction@ccc-site.com.



Further information on the Dunkettle Scheme can be accessed www.dunkettle.ie.

Real time traffic information can be accessed via www.dunkettletraffic.ie or on the Dunkettle Live App ([Apple App store](#) and [Google Play store](#)).

New subscribers to the newsletter can register: www.dunkettle.ie/newslettersignup

Your email address is on a list that we use to keep you informed on the progress on the N40 and Dunkettle Interchange works.

Want to change how you receive these emails?

You can [update your preferences](#) or [unsubscribe from this list](#).
