

Dunkettle Progress Update

6th August 2021

[More Information at www.Dunkettle.ie](http://www.Dunkettle.ie)



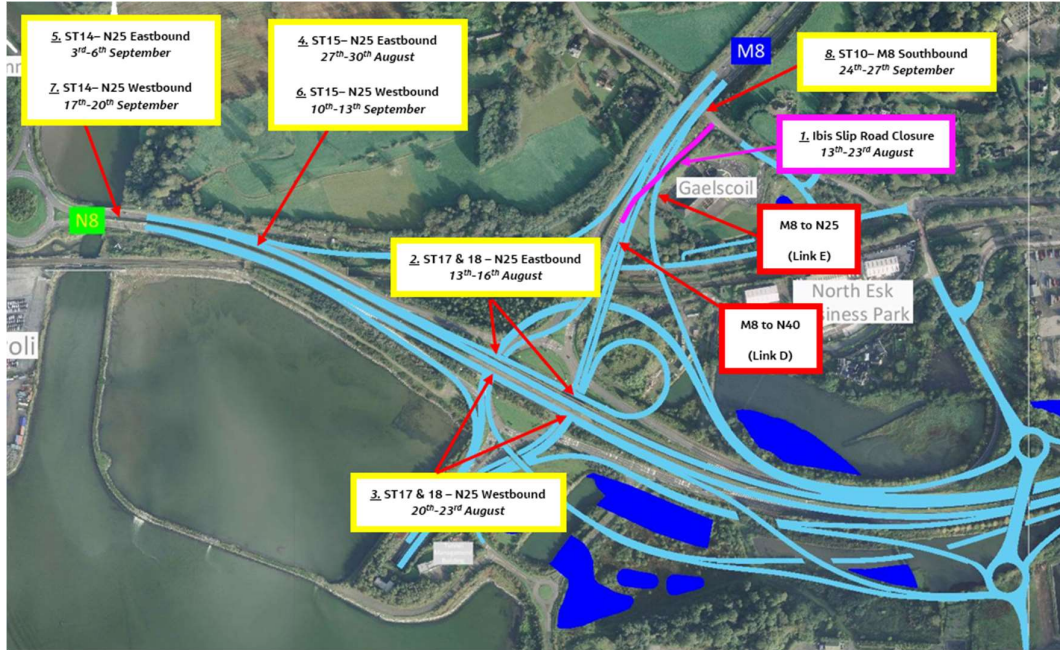
[Twitter](#)



[Website](#)

Dunkettle Interchange Upgrade Project

- Works are continuing on structures ST01, ST06, ST07, ST08, ST09, ST10, ST11, ST14 along with Retaining Wall RW05. Ground improvement and earthworks filling for the Link roads both north and south of the N25 are also ongoing.



Locations and dates of imminent upcoming major Traffic Management Interfaces:

As noted in our previous updates, significant works will be progressed in live carriageways over the months of August and September. Two upcoming items are summarised as follows as per items 1 and 2 of the layout plan above:

- The Ibis slip road from the L-2998 to the M8 southbound will be closed from Friday 13th August at 09:30 to Monday 23rd August at 05:00. This temporary road closure is required to facilitate the tie in of two of the new Link roads D & E to the M8 southbound (see plan above). Local signposted diversions will be in place as shown on the

conditions they had to be postponed from this weekend unfortunately.



Proposed works area and diversion route on the N25 eastbound.

The works are being progressed under weekend working to minimise delays but again peak time delays should be anticipated.

- Works will continue next week at the Dunkettle Interchange Roundabout with the piling works being carried out for ST06 & ST07. It will be necessary to close lanes at off peak times on the

roundabout and also on the approaches in order to gain safe access to the works.

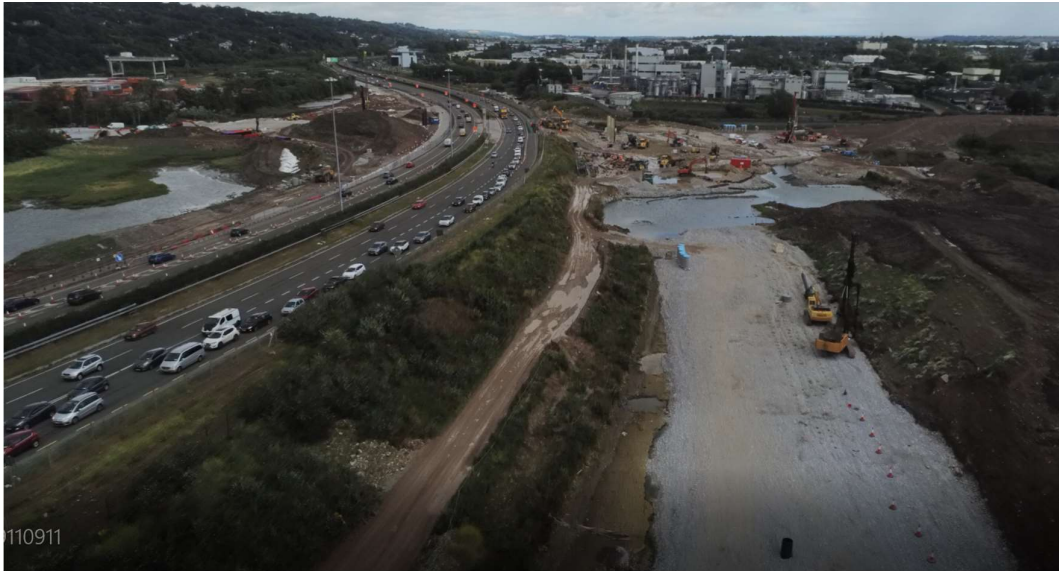


Ongoing piling works for ST07 at the eastern side of the Dunkettle Interchange Roundabout.

- The existing traffic light controller for the main Dunkettle Interchange Roundabout is to be relocated under night time working Tuesday 10th August. An update/optimisation exercise will be carried out on the traffic light phasing as part of these works. No

significant disruption to traffic is anticipated.

- Ground improvement works for the earthworks embankments will continue with the works continuing both north and south of the N25— see photograph below.



Ground improvement works ongoing south of the N25 under the proposed Southern Dumbbell Roundabout.

- A reminder that the temporary reduced speed limit of 60 km/hr for the Dunkettle site area is in place and motorists are requested to abide by the speed limit in the interests of the safety of the personnel working on site and road users themselves also.

Please see hereunder link to a recent drone video showing the current works on site in the vicinity of ST01 - N25 Overbridge:

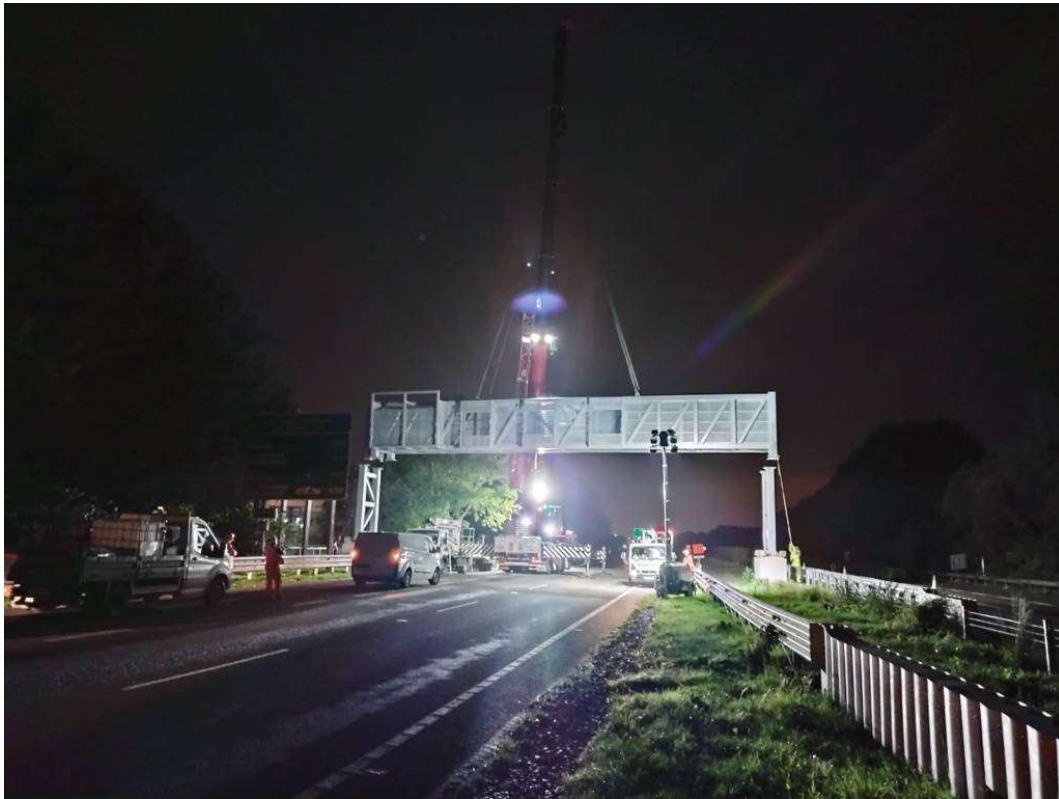


N40 Intelligent Transport Systems

Installation of gantry mounted Variable Message Signs and other infrastructure to display traffic information such as journey times.

Works will continue next week on the ITS sites as follows:

- The completion of electrical and fibre optic works will continue over the coming period at the individual ITS sites with minimal impact on traffic.
- Two further structural steel gantries were installed on the N25 westbound in the period, in total 11 out of 12 of the structural steel elements for the current phase of ITS works are now in place, the last remaining structural steel element will be installed on the N40 – see photograph below.

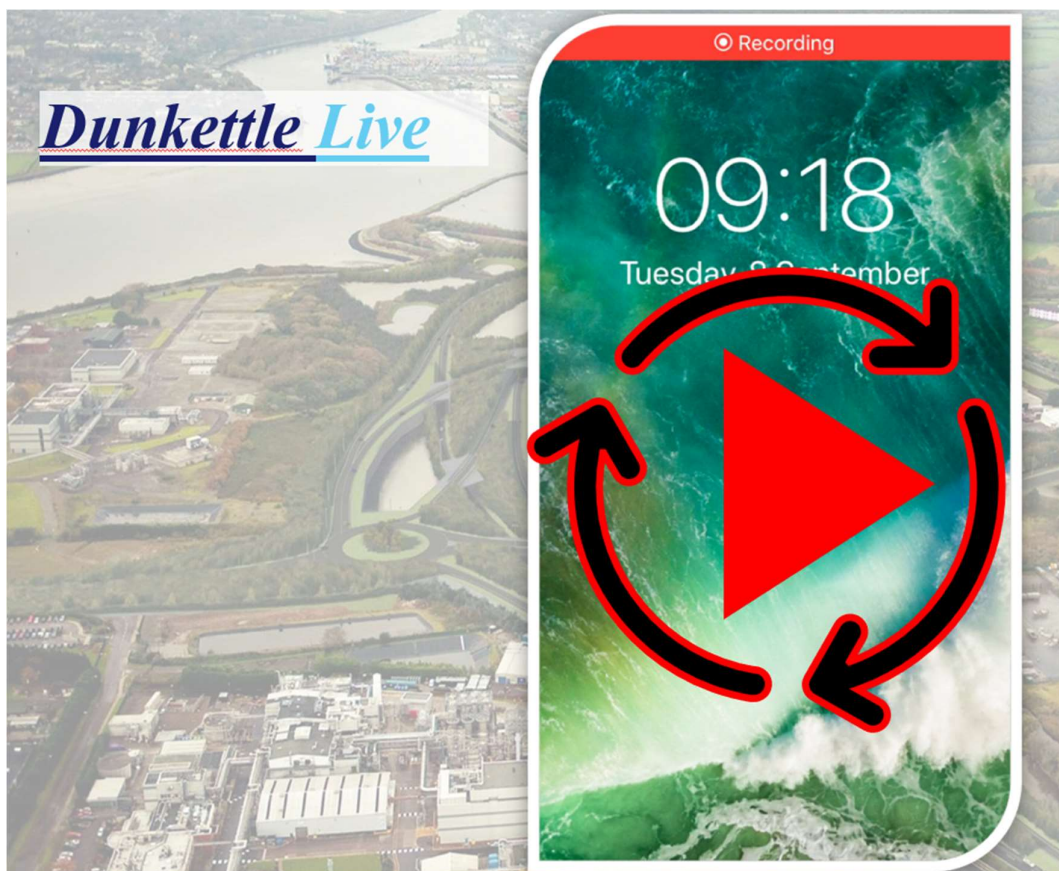


Structural steel portal gantry installation being completed on the N25 westbound under a night time road closure.

- The slip road from the M28 northbound to the N40 eastbound at Bloomfield will be closed on next Tuesday night from 21:00 to 05:00 to facilitate the installation of sub-ducting, traffic will be diverted locally via the Kinsale Road Interchange.

Dunkettle Live Traffic App

- Traffic levels have increased following the recent lifting of some of the Covid 19 restrictions with traffic currently running at approximately 90% of pre-Covid levels.



Click on the icon above to see the benefits of the Dunkettle Live App.



Dunkettle Live App: Download from [Apple App store](#) or from [Google Play store](#)

As always, if there are any queries or comments in relation to these works, please contact us at:

Phone: 1800 810077 (at any time), **Email:** roadconstruction@ccc-site.com.



Further information on the Dunkettle Scheme can be accessed www.dunkettle.ie.

Real time traffic information can be accessed via www.dunkettletraffic.ie or on the Dunkettle Live App ([Apple App store](#) and [Google Play store](#)).

New subscribers to the newsletter can register: www.dunkettle.ie/newslettersignup

Your email address is on a list that we use to keep you informed on the progress on the N40 and Dunkettle Interchange works.

Want to change how you receive these emails?

You can [update your preferences](#) or [unsubscribe from this list](#).
