

Dunkettle Progress Update

13th August 2021

[More Information at www.Dunkettle.ie](http://www.Dunkettle.ie)



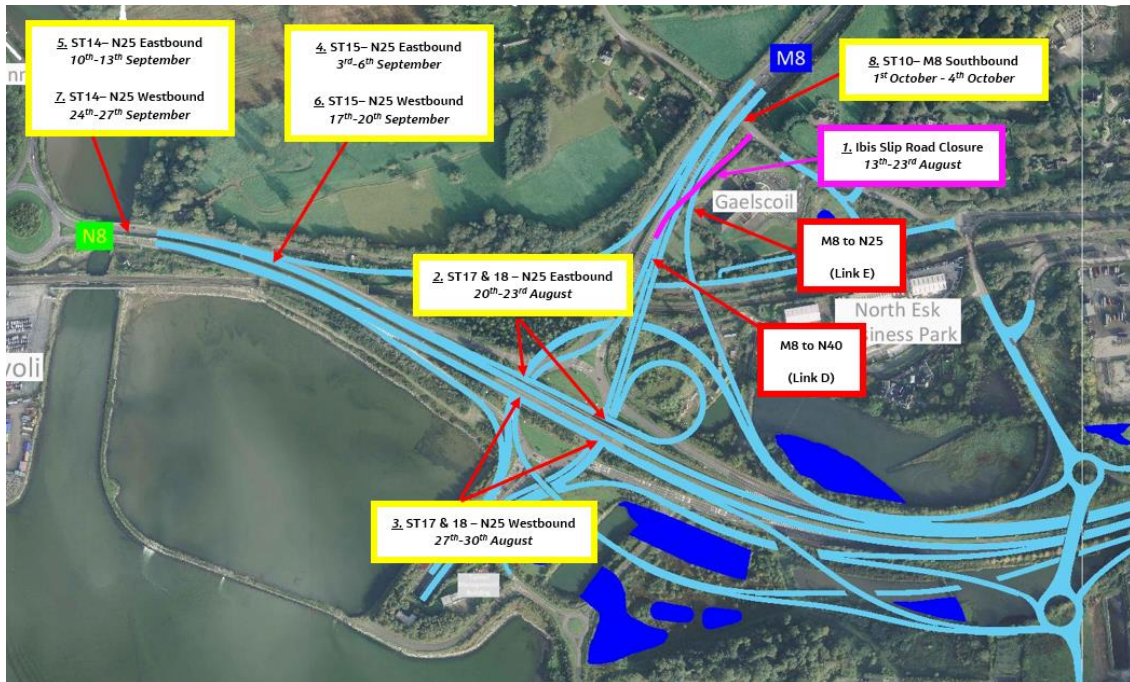
[Twitter](#)



[Website](#)

Dunkettle Interchange Upgrade Project

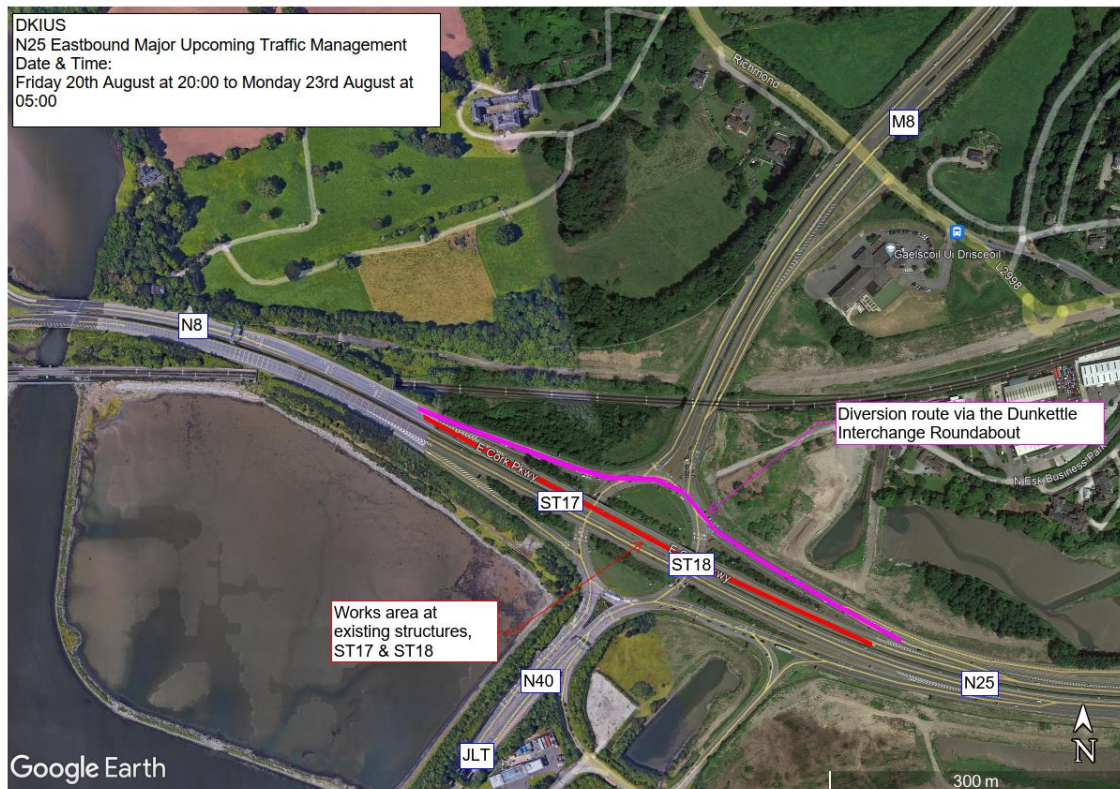
- Works are continuing on structures ST01, ST06, ST07, ST08, ST09, ST10, ST11, ST14 along with Retaining Wall RW05. Ground improvement and earthworks filling for the Link roads both north and south of the N25 are also ongoing.



Locations and dates of imminent upcoming major Traffic Management Interfaces:

As noted in our previous updates, significant works will be progressed in live carriageways over the months of August and September. Two upcoming items are summarised as follows as per items 1 and 2 of the layout plan above:

- The Ibis slip road from the L-2998 to the M8 southbound has been closed this morning and it will remain closed until Monday 23rd August at 05:00. This temporary road closure is required to facilitate the tie in of two of the new Link roads D & E to the M8 southbound (see plan above). Local signposted diversions will be in place as

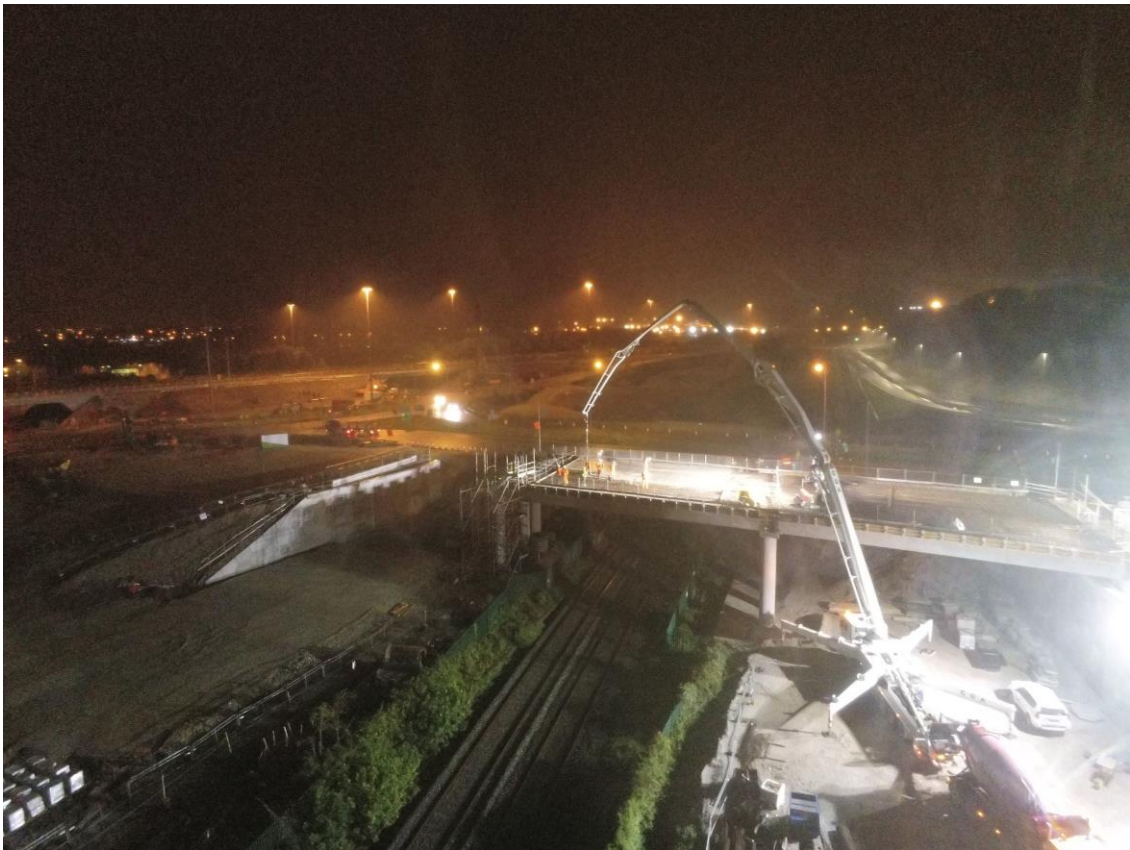


Proposed works area and diversion route on the N25 eastbound:

- The works are being progressed under weekend working to minimise delays but again peak time delays should be anticipated.
- Works will continue next week at the Dunkettle Interchange Roundabout with the piling works nearing completion for ST06 & ST07. It will be necessary to close lanes at off peak times on the roundabout and also on the approaches in order to gain safe access to the works.
- The existing traffic light controller for the main Dunkettle Interchange Roundabout is to be relocated under night time

working Thursday 19th August. An update/optimisation exercise will be carried out on the traffic light phasing as part of these works. No significant disruption to traffic is anticipated.

- Regular commuters on the M8 southbound will have noted significant progress over the course of the last week at Structure ST08 with the bridge deck for the central span of the three span bridge poured at night, whilst the beams for the most southerly span were also placed successfully yesterday – see photographs below.



ST08 Bridge deck being completed at night.



Bridge beams for the ST08 southern deck being installed parallel to the live M8 southbound.

- A reminder that the temporary reduced speed limit of 60 km/hr for the Dunkettle site area is in place and motorists are requested to abide by the speed limit in the interests of the safety of the personnel working on site and road users themselves also.

Please see hereunder link to a recent drone video showing the current works on site in the vicinity of the Ibis slip road closure and the works at ST08:



N40 Intelligent Transport Systems

Installation of gantry mounted Variable Message Signs and other infrastructure to display traffic information such as journey times.

Works will continue next week on the ITS sites as follows:

- Works to install the CCTV camera pole in the vicinity of the Mahon Point Interchange were completed in the period – see photograph below.



CCTV pole erection ongoing at the Mahon Point Interchange at night time.

- Permanent road resurfacing works will take place at night time next week at a number of locations requiring the following traffic management restrictions:
 - o There will be a road closure on Monday night, 10pm to 5.30am, on the N8 eastbound between Tivoli and the Dunkettle Roundabout with diversions in place through the city via the N27 and the N40 through the Jack Lynch Tunnel.
 - o On Tuesday night, there will be a road closure in place on the N25 Eastbound at Junction 2 from 9pm to 5am, with traffic being diverted locally via the off and on slip roads to the Little Island Interchange.
 - o Also on Tuesday night there will be a full closure of the N25 westbound between junction 3 and junction 2, with a diversion in place via the L3004 road through Glounthaune village.
- The slip road from the N28 northbound to the N40 eastbound at Bloomfield will be closed on next Wednesday night from 21:00 to 05:00 to facilitate the installation of sub-ducting, traffic will be diverted locally via the Kinsale Road Interchange.
- Also on Wednesday night the N25 westbound diverge slip at Junction 2 Little Island will be closed to facilitate installation of sub-ducting, traffic will be diverted locally via the R639.



Dunkettle Live Traffic App

- Traffic levels have increased following the recent lifting of some of the Covid 19 restrictions with traffic currently running at approximately 90% of pre-Covid levels.



Click on the icon above to see the benefits of the Dunkettle Live App.



Dunkettle Live App: Download from [Apple App store](#) or from [Google Play store](#)

As always, if there are any queries or comments in relation to these works, please contact us at:

Phone: 1800 810077 (at any time), **Email:** roadconstruction@ccc-site.com.



Further information on the Dunkettle Scheme can be accessed www.dunkettle.ie.

Real time traffic information can be accessed via www.dunkettletraffic.ie or on the Dunkettle Live App ([Apple App store](#) and [Google Play store](#)).

New subscribers to the newsletter can register: www.dunkettle.ie/newslettersignup

Your email address is on a list that we use to keep you informed on the progress on the N40 and Dunkettle Interchange works.

Want to change how you receive these emails?

You can [update your preferences](#) or [unsubscribe from this list](#).
