

Dunkettle Progress Update

27th August 2021

[More Information at www.Dunkettle.ie](http://www.Dunkettle.ie)



Twitter



Website

Dunkettle Interchange Upgrade Project

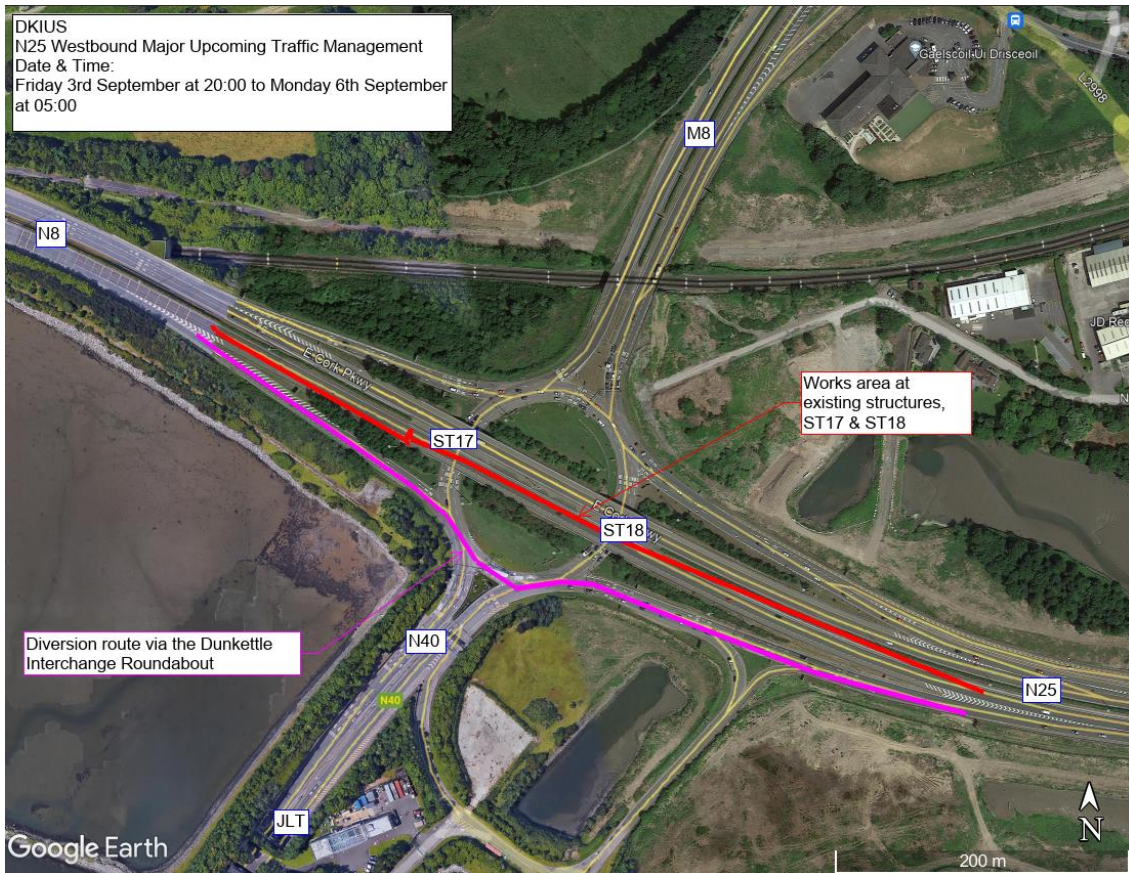
- Works are continuing on structures ST01, ST06, ST07, ST08, ST09, ST10, ST11, ST14 along with Retaining Wall RW05. Ground improvement and earthworks filling for the Link roads both north and south of the N25 are also ongoing.
- The Ibis slip road from the L-2998 to the M8 southbound has been reopened to traffic following the completion of the initial tie in works for Links D & E, the new temporary alignment includes a ramp down onto the M8 southbound and motorists are requested to drive with

caution through this section of the site while people adapt to the new layout – see photograph hereunder.



Temporary Alignment at re-opened 'Ibis Slip Road', merging with M8 Southbound

The N25 westbound will be closed over the Dunkettle Interchange Roundabout section to facilitate the existing waterproofing to be replaced on the two existing bridges. The works will now be carried out from 20:00 on Friday 3rd September until 05:00 on Monday 6th September. The works are being progressed under weekend working to minimise delays but again peak time delays should be anticipated.



Localised diversion route on the N25 Westbound to be in place weekend of 03rd - 06th September

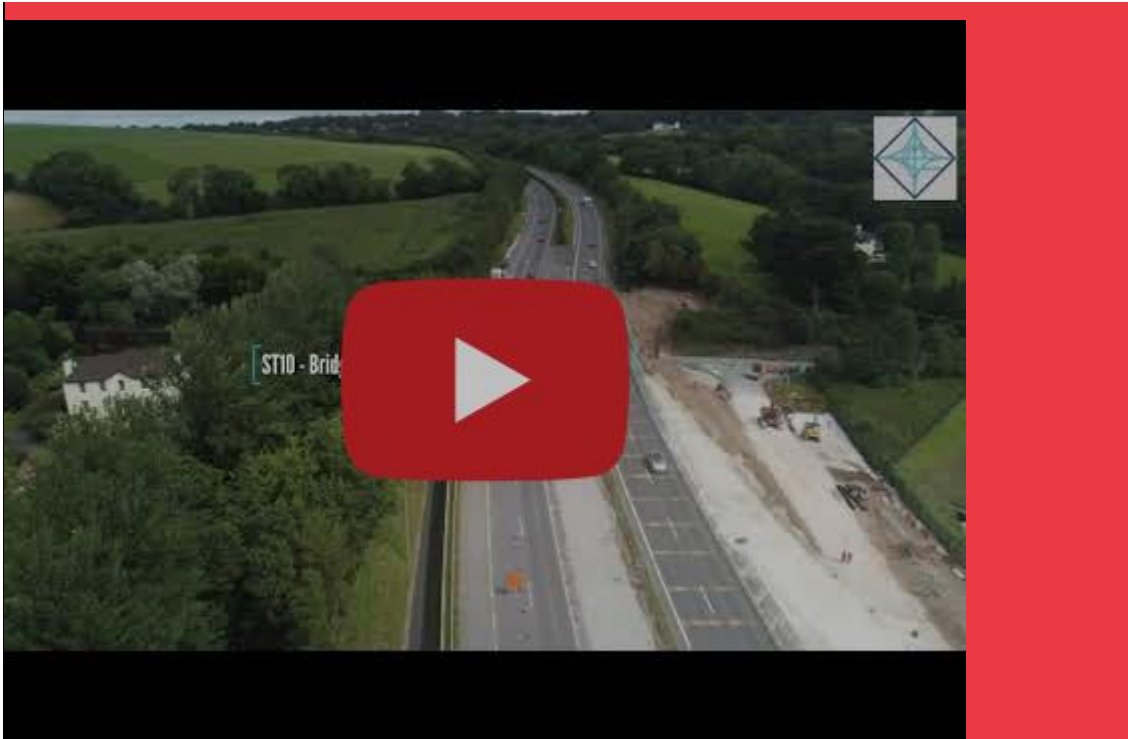
- Works will continue next week at the Dunkettle Interchange Roundabout for ST06 & ST07. It will be necessary to close lanes at off peak times on the roundabout and also on the approaches in order to gain safe access to the works.
- Earthworks ground improvement works are ongoing with vertical drainage and piling works ongoing south of the N25 for Link C which will link the N25 westbound with the M8 northbound – see photograph below.



Ground Improvement Works underway between the N25 and N40

A reminder that the temporary reduced speed limit of 60 km/hr for the Dunkettle site area is in place and motorists are requested to abide by the speed limit in the interests of the safety of the personnel working on site and road users themselves also.

Please see hereunder link to a recent drone video showing works on site in the vicinity of the Ibis slip road closure and the works at ST01 ,ST08 and ST09:



N40 Intelligent Transport Systems

Installation of gantry mounted Variable Message Signs and other infrastructure to display traffic information such as journey times.

Works will continue next week on the ITS sites as follows:

- The completion of electrical and fibre optic works will continue over the coming period at the individual ITS sites with minimal impact on

traffic. Motorists will see more of the new Variable Message Signs closer to the Interchange coming into regular operation in the coming weeks as a result of these works.

- The last remaining structural steel element to be erected will be the replacement of the existing portal gantry which spans the N40 in both directions between Bloomfield and Mahon Point. These works are currently scheduled for the middle of October and this will necessitate the closure of the N40 by night in order to remove the existing gantry and erect the replacement. Further details will be provided closer to the date – see photograph below.



Existing gantry between Bloomfield and Mahon junctions to be replaced by 'ITS enabled gantry' incorporating Variable Message Signs

Dunkettle Live Traffic App

- Traffic levels have increased following the recent lifting of some of the Covid 19 restrictions with traffic currently running at approximately 90% of pre-Covid levels.
- With schools returning next week, further increases in traffic volumes, particularly during the morning peak can be anticipated. Regular users of the interchange are encouraged to download the *DunkettleLive* traffic App at the Link below for live journey times through the junction and live camera feeds of traffic conditions.



Click on the icon above to see the benefits of the Dunkettle Live App.



Dunkettle Live App: Download from [Apple App store](#) or from [Google Play store](#)

As always, if there are any queries or comments in relation to these works, please contact us at:

Phone: 1800 810077 (at any time), **Email:** roadconstruction@ccc-site.com.



Further information on the Dunkettle Scheme can be accessed www.dunkettle.ie.

Real time traffic information can be accessed via www.dunkettletraffic.ie or on the Dunkettle Live App ([Apple App store](#) and [Google Play store](#)).

New subscribers to the newsletter can register: www.dunkettle.ie/newslettersignup

Your email address is on a list that we use to keep you informed on the progress on the N40 and Dunkettle Interchange works.

Want to change how you receive these emails?

You can [update your preferences](#) or [unsubscribe from this list](#).
