

Dunkettle Progress Update

22nd October 2021

[More Information at www.Dunkettle.ie](http://www.Dunkettle.ie)

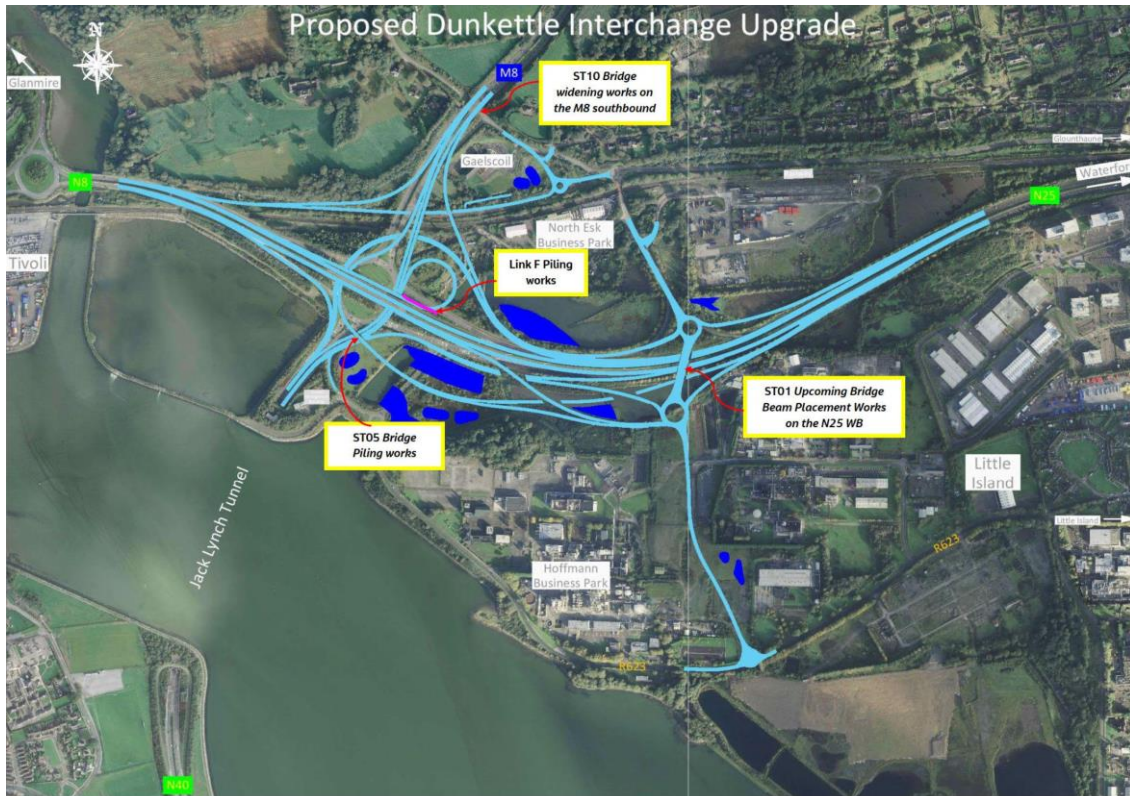


[Twitter](#)



[Website](#)

Dunkettle Interchange Upgrade Project



- Earthworks and works on the various new structures required for the new alignment will continue on site over the coming weeks.
- The piling works for Link F (as highlighted on the image above) are ongoing at the eastern side of the main Dunkettle Interchange Roundabout with off peak lane closures being implemented as necessary. These works will continue for a further two weeks approximately. Further off peak lane restrictions / closures will be required in order to complete these works and details will continue to be provided to motorists as these works are progressed – see photograph below of the ongoing works.



Piling works ongoing for the widening of the existing N25 embankment.

- The M8 northbound traffic layout was successfully realigned last Friday night to facilitate works within the M8 centre median. The M8 southbound will be closed at night from next Tuesday to Thursday night (26th to 28th October inclusive) from 22:00 to 05:00 in order to facilitate the widening of Structure ST10 over the L2998 local road. Traffic will be diverted at Junction 18 via Glanmire village. The beams for this structure are due to be installed in November.



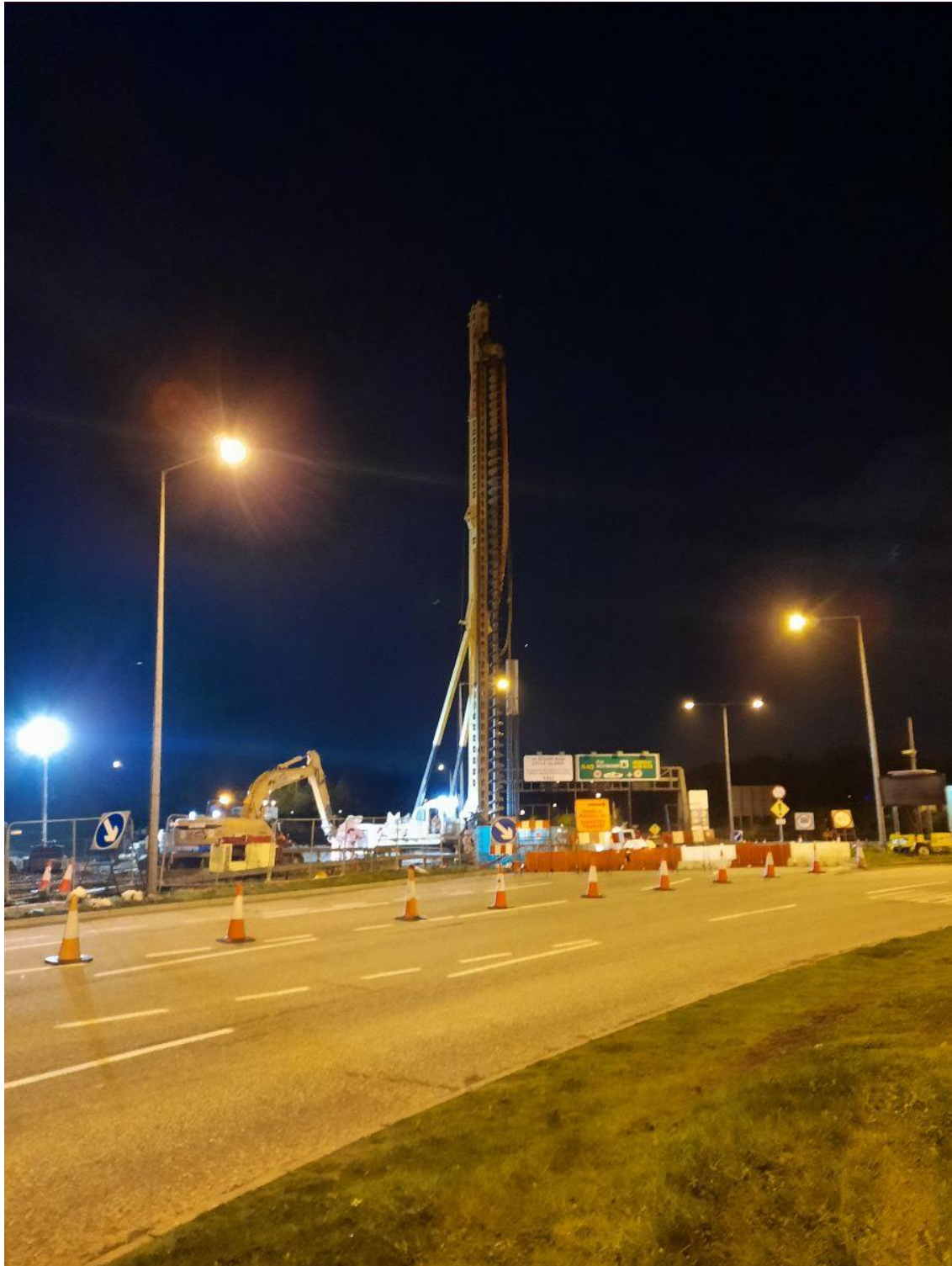
Works ongoing at Structure ST10 and the central median of the M8.

- At Structure St-01 , the bridge beams across the Westbound span of the N25 are due to be placed under night time working on next Thursday and Friday (28th & 29th October). In order to facilitate these works, the N25 westbound will be closed from 22:00 to 05:00 from the Little Island Interchange to the Dunkettle Interchange Roundabout. Traffic will be diverted via the R623. Further similar closures will be required on the following week in order to complete the works and details will be provided in future newsletters - see photograph below.



ST01 works ongoing in advance of the upcoming placement of beams.

- The piling works for ST05 has now been completed, this would have been very visible to commuters heading southbound through the Jack Lynch Tunnel over the last two weeks. The works required in the existing hard shoulder were completed during the scheduled Jack Lynch Tunnel closures in order to minimise the impact of the works on traffic – see photograph below.



Structure ST05 piling works being completed under the Jack Lynch Tunnel closure.

Dunkettle Live Traffic App

- With traffic volumes now over 90% of pre-pandemic levels and still increasing motorists are reminded of the availability of the “Dunkettle Live” traffic app. In addition to live camera feeds, real time journey duration information is also available for all of the main routes approaches to the Dunkettle interchange Roundabout.
- Obviously, this information can be extremely useful in allowing motorists to plan their journeys in periods of congestion. If you are interested in maximising the use of the **Dunkettle Live** App, and the accompanying website, please click on the link hereunder for a direct link to the website.

The screenshot displays the Dunkettle Traffic website interface. At the top, the browser address bar shows the URL <https://www.dunkettetraffic.ie>. The website header includes the title "DUNKETTLE TRAFFIC" and navigation links for "HOME" and "DUNKETTLE PROJECT". A sidebar on the left contains icons for a menu, a plus sign, and a search icon. The main content area features a "LIVE FEEDS" section with a grid of six live camera feeds, each with a red status indicator in the top right corner. The feeds are labeled: "N25 LOOKING EAST", "M8 LOOKING NORTH", "N8 (TOWARDS THE CITY)", "N40 NORTH OF TUNNEL", "N40 - BLOOMFIELD WEST", and "N40 - BLOOMFIELD EAST". To the right of the feeds, the local time "07:52" is displayed. Below the feeds is a "JOURNEY TIMES" section with a "LATEST" dropdown menu. A table below the dropdown shows the latest journey time for the route from "M8 J18 Glanmire North" to "N40 J6 Kinsale Road", which is "11 minute(s)".

From	To	Travel time (minutes)
M8 J18 Glanmire North	N40 J6 Kinsale Road	11 minute(s)

Click on the image above to see the benefits and features of the Dunkettle Traffic website; www.dunkettletraffic.ie



Dunkettle Live App: Download from [Apple App store](#) or from [Google Play store](#)

N40 Intelligent Transport Systems

Installation of gantry mounted Variable Message Signs and other infrastructure to display traffic information such as journey times.

- The final gantry of the Dunkettle Advanced ITS scope was installed over the N40 by night this week, spanning both carriageways between the Bloomfield and Mahon junctions. Installation of signage will follow by night during November.

- ITS works next week will continue without any impact on traffic.



ITS Gantry Installation on the N40 between J9 Bloomfield and J10 Mahon

As always, if there are any queries or comments in relation to these works, please contact us at:

Phone: 1800 810077 (at any time), **Email:** roadconstruction@ccc-site.com.



Further information on the Dunkettle Scheme can be accessed www.dunkettle.ie.

Real time traffic information can be accessed via www.dunkettletraffic.ie or on the Dunkettle Live App ([Apple App store](#) and [Google Play store](#)).

New subscribers to the newsletter can register: www.dunkettle.ie/newslettersignup

Your email address is on a list that we use to keep you informed on the progress on the N40 and Dunkettle Interchange works.

Want to change how you receive these emails?

You can [update your preferences](#) or [unsubscribe from this list](#).
