

Dunkettle Progress Update

12th November 2021

[More Information at www.Dunkettle.ie](http://www.Dunkettle.ie)



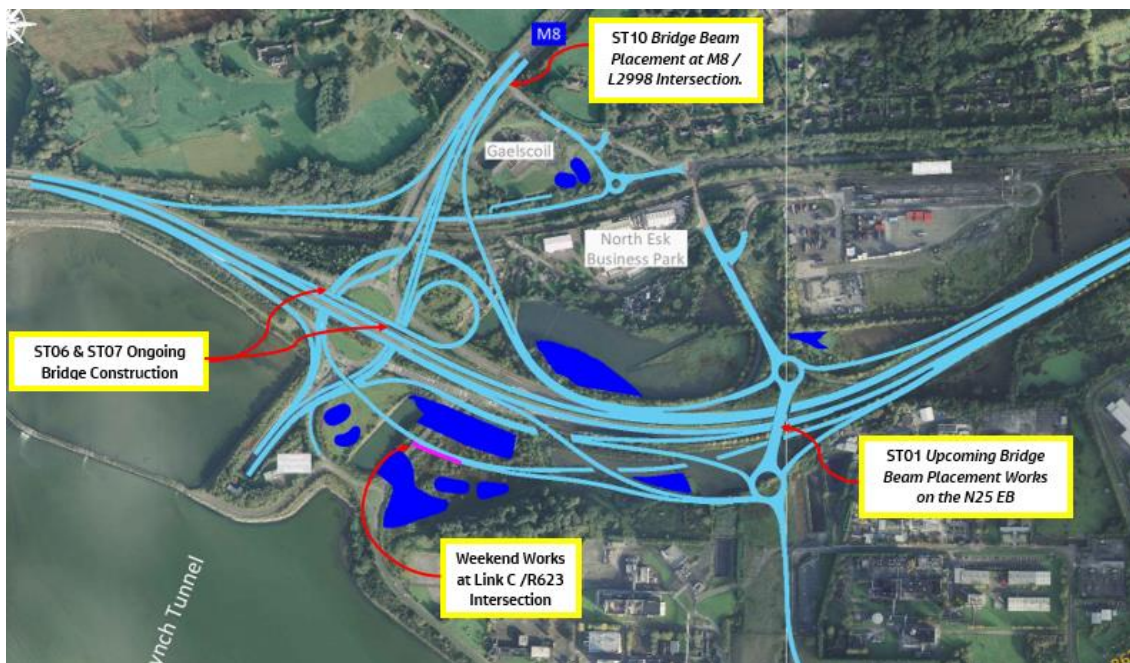
Twitter



Website

Dunkettle Interchange

Upgrade Project

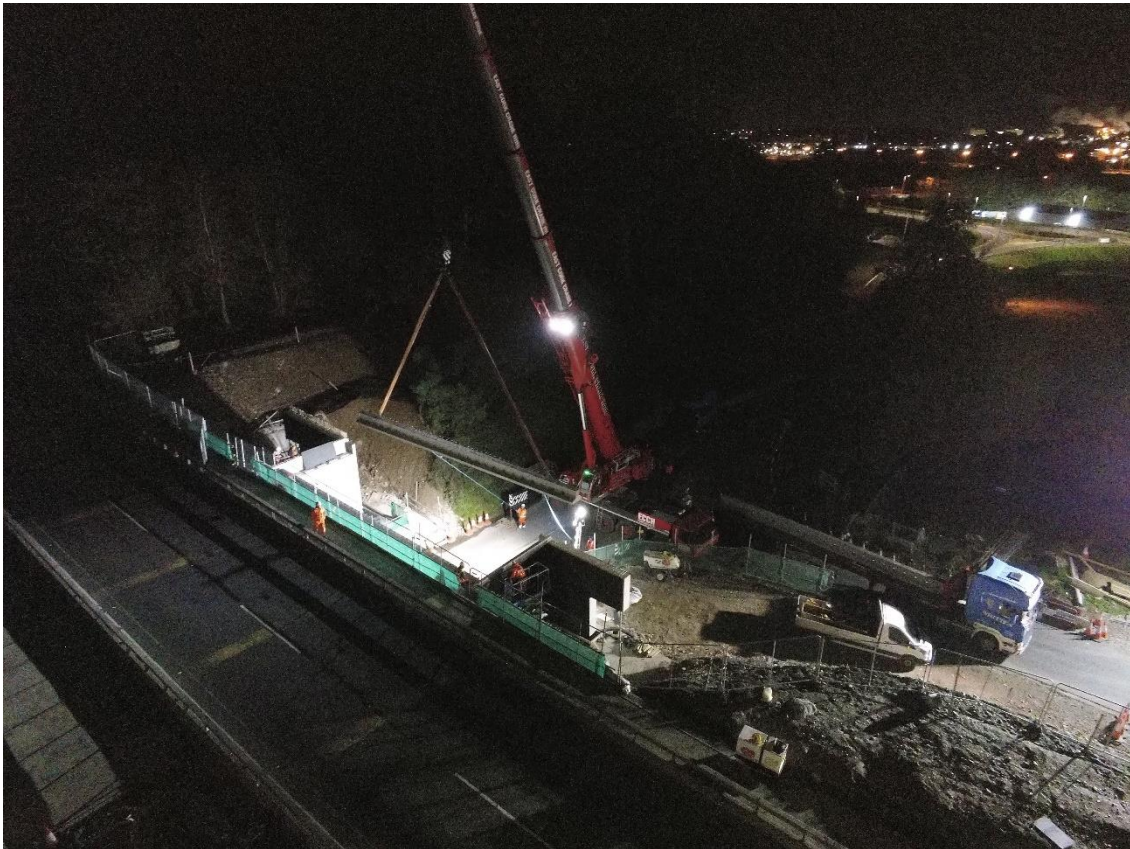


- Earthworks and works on the various new structures required for the updated alignment will continue on site over the coming period.
- It is anticipated that the beams for the northern span of Structure ST01 over the existing N25 eastbound will be installed next week. In order to facilitate the works the N25 eastbound will be closed from 22:00 to 05:00 on two nights between the Dunkettle Interchange Roundabout and the Little Island Interchange. Traffic will be diverted through Little Island via the R623 – see photograph below.



Works ongoing at Structure ST01 ahead of the upcoming beam placement.

- The final precast beam will be placed at Structure ST10 on Wednesday 17th November 2021 on the M8 southbound. This will require a local road closure of the L2998 from 22:00 on Wednesday 17th November to 05:00 on Thursday 18th November. Traffic will be diverted via the Dunkettle Roundabout and the N8/N25 to the Little Island Interchange.



Precast concrete beams being installed at ST10 recently.

- The M8 southbound will be closed next Wednesday and Thursday night (17th & 18th November) from 22:00 to 05:00 in order to

complete road crossings and the installation of a portal gantry foundation in the existing central median. Traffic will be diverted at Junction 18 via the R639 through Glanmire village.

- Works will continue at Structures ST06 & ST07 at the northern side of the Dunkettle Interchange. Further off peak lane restrictions / closures will be required in order to complete these works and details will continue to be provided to motorists as the works are progressed – see photograph below of the ongoing works.



Construction works ongoing for Structure ST06 within the Dunkettle Interchange Roundabout.

- In an effort to maximise output before the Christmas holidays ground improvement works will continue on Link C alongside the R623 on this Sunday 14th November 2021 between 08:30 to 17:00 to allow the installation of vertical drains. The works will be

completed offline and they will have no impact on road users.

- Over the coming period there will be a focus on finishing the new road alignment between Structure ST08 and Structure ST10 - both of these structures will be on the new M8 Southbound and commuters will notice an increased level of activity in this area. Details of the upcoming Traffic Management measures for this area will be circulated before the end of November in relation to the same.

Dunkettle Live Traffic App

- With traffic volumes now well over 90% of pre-pandemic levels and still increasing motorists are reminded of the availability of the “Dunkettle Live” traffic app. In addition to live camera feeds, real time journey duration information is also available for all of the main routes approaches to the Dunkettle interchange Roundabout.
- This information can be extremely useful in allowing motorists to plan their journeys in periods of congestion. If you are interested in maximising the use of the **Dunkettle Live** App, and the accompanying website, please click on the link hereunder for a direct link to the website.

https://www.dunketttraffic.ie Dunkettle interchange Not syncing

JOURNEY TIMES

LATEST

From	To	Travel time (minutes)
M8 J18 Glanmire North	N40 J6 Kinsale Road	14 minute(s)
M8 J18 Glanmire North	N8 Silversprings	14 minute(s)
M8 J18 Glanmire North	N25 J2 Little Island	11 minute(s)
N25 J2 Little Island	N8 Silversprings	5 minute(s)
N25 J2 Little Island	N40 J6 Kinsale Road	7 minute(s)
N25 J2 Little Island	M8 J18 Glanmire North	9 minute(s)
N40 J6 Kinsale Road	M8 J18 Glanmire North	12 minute(s)

Click on the image above to see the benefits and features of the Dunkettle Traffic website; www.dunketttraffic.ie



Dunkettle Live App: Download from [Apple App store](#) or from [Google Play store](#)

Please see hereunder link to recent drone footage showing various ongoing works at on the Dunkettle Interchange Upgrade Scheme:



N40 Intelligent Transport Systems

Installation of gantry mounted Variable Message Signs and other infrastructure to display traffic information such as journey times.

Significant works on Dunkettle Advanced ITS works are planned for next week, to coincide with the scheduled Jack Lynch Tunnel Closure, in order to minimise the impact on motorists.

- Directional signage will be installed on the new gantry, recently installed between the Bloomfield and Mahon junctions on the N40. This will require closures of the N40 in both directions for four nights, from Monday 15th to Thursday 18th November between 22:00 to 04:00.
- Traffic signals and rising barriers will be installed eastbound between Mahon and the tunnel, taking advantage of the tunnel closure. This equipment will form a critical part of the new Overheight Vehicle Detection system being delivered as part of this project.



Super span gantry in place spanning the N40.

As always, if there are any queries or comments in relation to these works, please contact us at:

Phone: 1800 810077 (at any time), **Email:** roadconstruction@ccc-site.com.



Further information on the Dunkettle Scheme can be accessed www.dunkettle.ie.

Real time traffic information can be accessed via www.dunkettletraffic.ie or on the Dunkettle Live App ([Apple App store](#) and [Google Play store](#)).

New subscribers to the newsletter can register: www.dunkettle.ie/newslettersignup

Your email address is on a list that we use to keep you informed on the progress on the N40 and Dunkettle Interchange works.

Want to change how you receive these emails?

You can [update your preferences](#) or [unsubscribe from this list](#).
