

Dunkettle Progress Update

19th November 2021

[More Information at www.Dunkettle.ie](http://www.Dunkettle.ie)

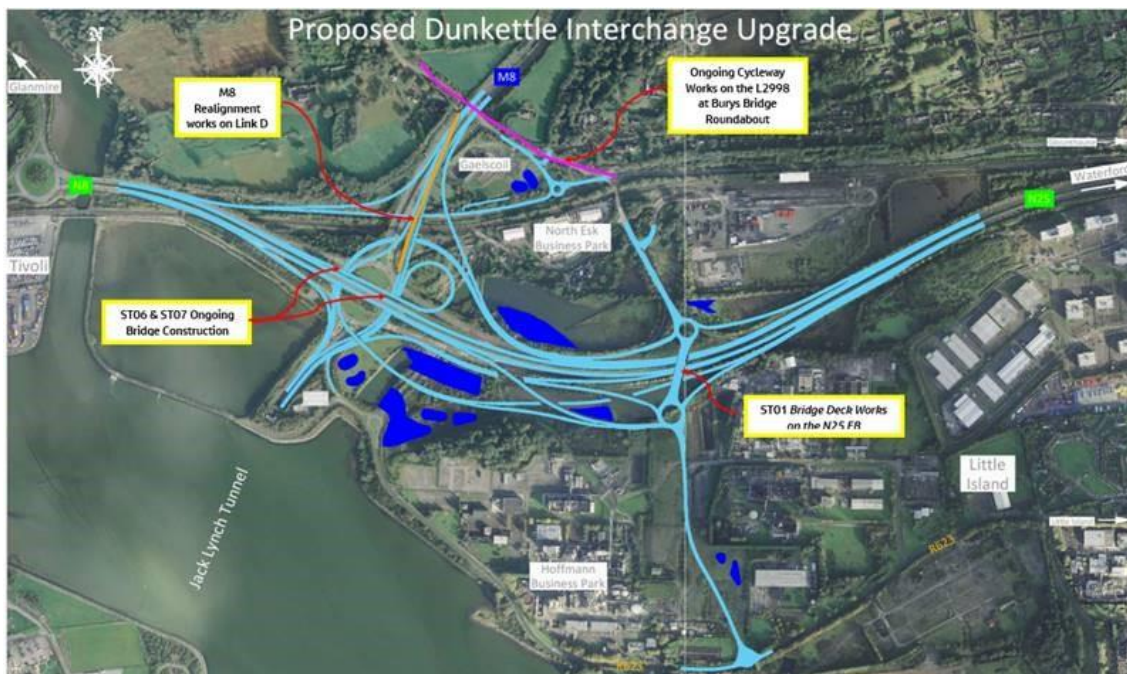


Twitter



Website

Dunkettle Interchange Upgrade Project



- Earthworks and works on the various new structures required for the updated alignment will continue on site over the coming period.
- The beams on the northern span of Structure ST01 on the N25 eastbound were successfully installed over the course of last Monday and Tuesday night. The completion of edge protection works and the installation of precast concrete panels between the beams in order to allow the deck to be constructed will continue at night over the coming period. This will require the N25 eastbound to be closed at night between 22:00 to 05:00 each night next week from Monday 22nd to Friday 26th November. Traffic will be diverted through Little Island via the R623 – see photograph below.



Works ongoing at Structure ST01 with the central and northern spans now in place over the existing N25.

- The works for the new Link D road alignment alongside the M8 southbound will continue in the coming period with the installation of concrete slip-form drainage and central median barrier installation currently getting underway – see photograph below.



Construction of the new Link D road alignment ongoing just south of Structure ST08.

- Works will continue at Structures ST06 & ST07 at the northern side of the Dunkettle Interchange, the works are currently ongoing at varying stages at all four of the abutments for the structures. Off peak lane restrictions will continue in order for the works to be completed – see photograph below of the ongoing works.



Construction works ongoing for Structure ST06 & ST07 within the Dunkettle Interchange Roundabout.

- The completion of the new cycleway extension from the western side of the M8 northbound to the Burys Bridge roundabout via the L2998 local road is now underway on site off line. Intermittent lane closures will be required in the coming period at off peak times in order to complete the works – see photograph below.



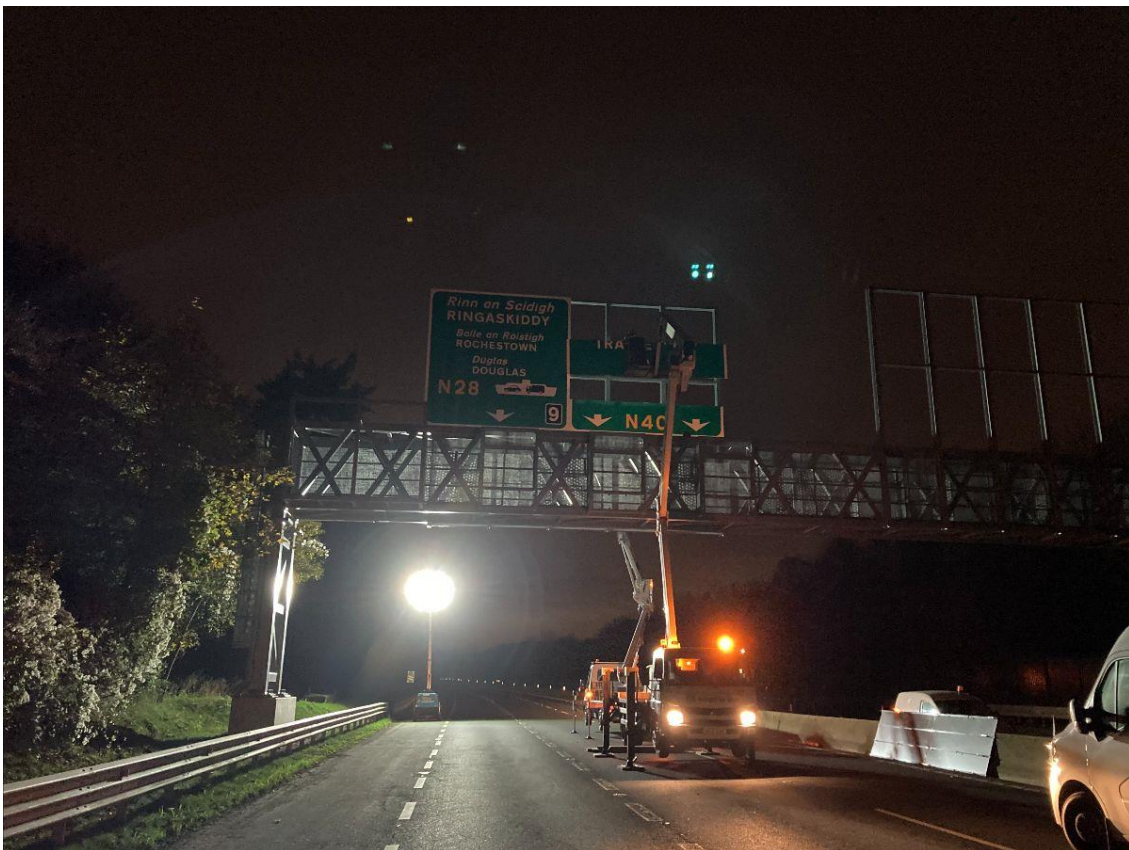
Construction works for the new cycleway ongoing at the Burys Bridge Roundabout.

Intelligent Transport Systems

Installation of gantry mounted Variable Message Signs and other infrastructure to display traffic information such as journey times.

A large amount of works were completed in the period in tandem with the Jack Lynch Tunnel closures and the pavement works undertaken on the N40 as follows:

- Advance directional signs were installed on the new ITS gantry between the Bloomfield and Mahon Point junctions on the N40. In order to complete these works next week it will be necessary to close the N40 eastbound between Bloomfield Interchange and Mahon Point Interchange from 22:00 on Wednesday 24th November to 05:00 on Thursday 25th November - see photograph below.



Advance directional signage being installed on the N40 under night time closures.

- Raising/lowering arm barriers have been installed and commissioned as part of new Over-Height Vehicle Detection (OHVD) system for the Jack Lynch Tunnel in the period also – see photograph below.



Automatic barrier installed on the N40 eastbound recently.

As always, if there are any queries or comments in relation to these works, please contact us at:

Phone: 1800 810077 (at any



time), **Email:** roadconstruction@ccc-site.com.

Further information on the Dunkettle Scheme can be accessed www.dunkettle.ie.

Real time traffic information can be accessed via www.dunkettletraffic.ie or on the Dunkettle Live App ([Apple App store](#) and [Google Play store](#)).

New subscribers to the newsletter can register: www.dunkettle.ie/newslettersignup

Your email address is on a list that we use to keep you informed on the progress on the N40 and Dunkettle Interchange works.

Want to change how you receive these emails?

You can [update your preferences](#) or [unsubscribe from this list](#).
