

Dunkettle Progress Update

3rd December 2021

[More Information at www.Dunkettle.ie](http://www.Dunkettle.ie)

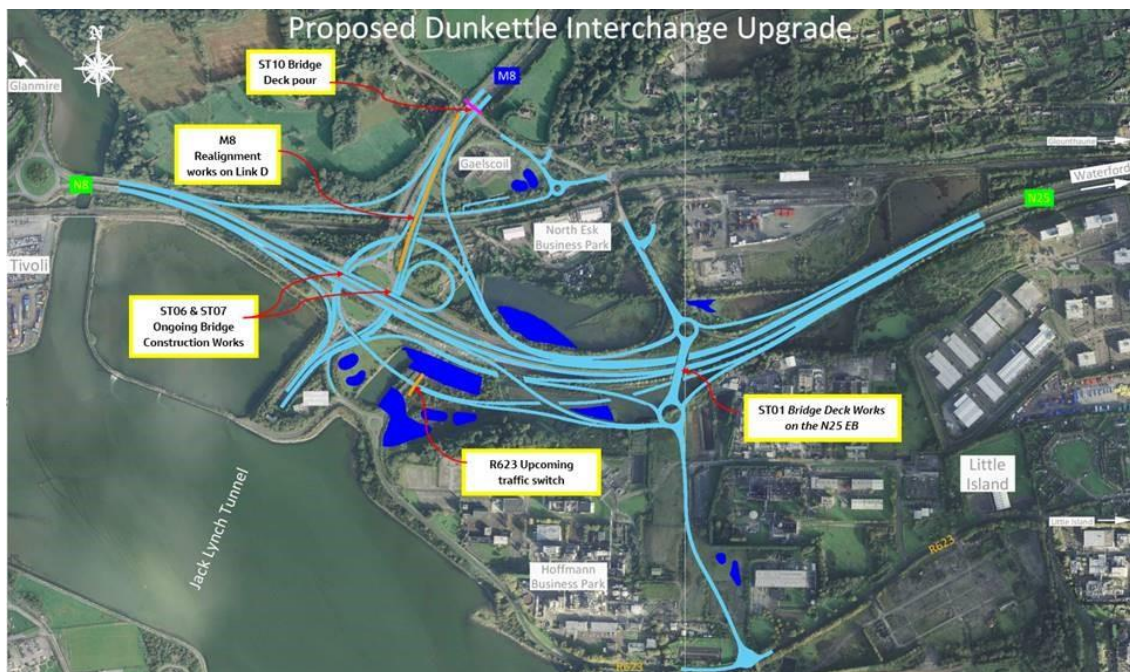


Twitter



Website

Dunkettle Interchange Upgrade Project



- Earthworks and works on the various new structures required for the updated alignment will continue on site up to and after Christmas – see photograph below.



CMC ground improvement works ongoing for Link C within the existing pond area.

- The L2998 local road between the Burys Bridge Roundabout and Glanmire will be closed in the vicinity of Structure ST10 between 22:00 on Thursday 9th December 2021 to 05:00 on Friday 10th

December in order to facilitate the pouring of the new bridge deck of ST10. Local diversions will be in place. – see photograph below.



Works ongoing at Structure ST10 on the M8 southbound.

- The works for the new Link D road alignment alongside the M8 southbound will continue for the next few weeks with the installation of services, drainage, safety barriers, and pavement ongoing – see photograph below.



Installation of concrete parapets at the southern side of ST08 ongoing.

- Works will continue at Structures ST06 & ST07 at the northern side of the Dunkettle Interchange. The works are currently ongoing at varying stages for all four of the abutments for these structures. Off peak lane restrictions will continue on the roundabout to facilitate these works – see photograph below of the ongoing works.



Construction works ongoing for Structure ST06 & ST07 within the Dunkettle Interchange Roundabout.

- Traffic exiting Little Island on the R623 will be switched onto the temporary new road alignment at the eastern side of the existing R623 over the next few days. This will facilitate the completion of the CMC ground improvement works in this area – see photograph below.

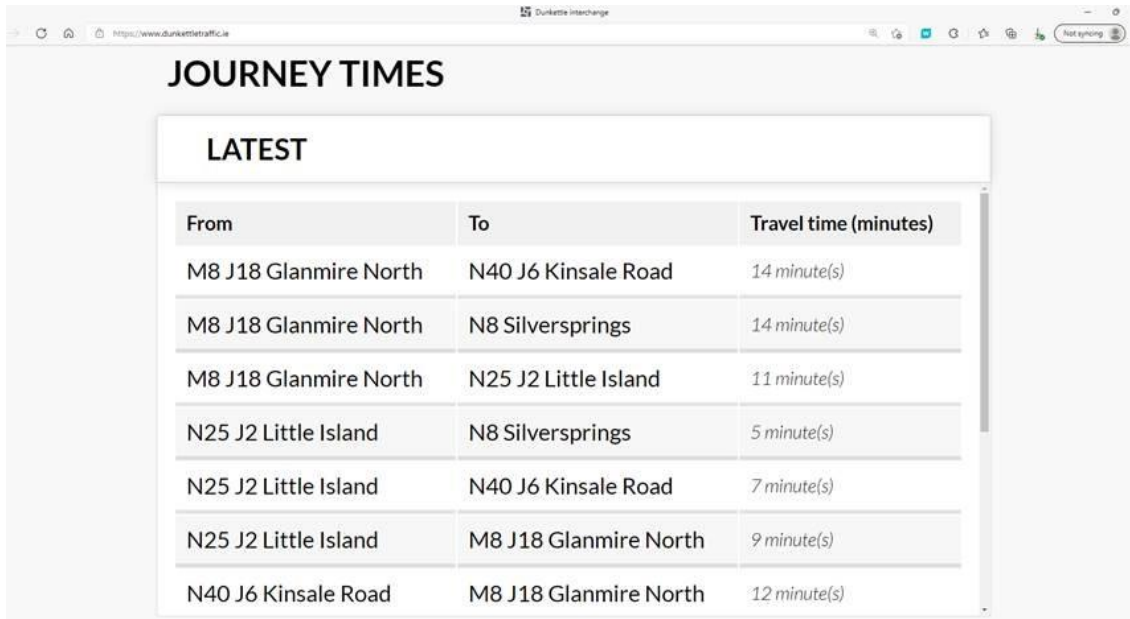


Preparatory works ongoing alongside the R623 for the upcoming traffic switch.

Dunkettle Live Traffic App

- There has been a noticeable reduction in traffic volumes over the recent period at peak times following the most recent government advice in relation to “working from home” due to the current pandemic. However, traffic volumes are still running at almost 90% of normal volumes and motorists are again reminded of the availability of the “***Dunkettle Live***” traffic app. In addition to live

camera feeds, real time journey duration information is also available for all of the main routes approaching the Dunkettle Interchange Roundabout.

A screenshot of a web browser displaying the 'Dunkettle Interchange' website. The page has a header with the title 'JOURNEY TIMES'. Below the header is a section titled 'LATEST' containing a table with journey duration information. The table has three columns: 'From', 'To', and 'Travel time (minutes)'. It lists seven different routes with their respective travel times in minutes.

From	To	Travel time (minutes)
M8 J18 Glanmire North	N40 J6 Kinsale Road	14 minute(s)
M8 J18 Glanmire North	N8 Silversprings	14 minute(s)
M8 J18 Glanmire North	N25 J2 Little Island	11 minute(s)
N25 J2 Little Island	N8 Silversprings	5 minute(s)
N25 J2 Little Island	N40 J6 Kinsale Road	7 minute(s)
N25 J2 Little Island	M8 J18 Glanmire North	9 minute(s)
N40 J6 Kinsale Road	M8 J18 Glanmire North	12 minute(s)

Click on the image above to see the benefits and features of the Dunkettle Traffic website.



Dunkettle Live App: Download from [Apple App store](#) or from [Google Play store](#)

Please see hereunder link to recent drone footage showing the ongoing works for the new M8 tie-in on the Dunkettle Interchange Upgrade Scheme:



N40 Intelligent Transport Systems

Installation of gantry mounted Variable Message Signs and other infrastructure to display traffic information such as journey times.

Works in relation to the ongoing ITS works will continue as follows:

- With the majority of the larger items of ITS equipment now in place, work over the coming weeks will focus on the offline installation of Over-Height Vehicle Detection (OHVD) equipment, with minimal impact on traffic.



Roadside poles on M8 approach awaiting install of OHVD Equipment.



As always, if there are any queries or comments in relation to these works, please contact us at:

Phone: 1800 810077 (at any time), **Email:** roadconstruction@ccc-site.com.



Further information on the Dunkettle Scheme can be accessed www.dunkettle.ie.

Real time traffic information can be accessed via www.dunkettletraffic.ie or on the Dunkettle Live App ([Apple App store](#) and [Google Play store](#)).

New subscribers to the newsletter can register: www.dunkettle.ie/newslettersignup

Your email address is on a list that we use to keep you informed on the progress on the N40 and Dunkettle Interchange works.

Want to change how you receive these emails?

You can [update your preferences](#) or [unsubscribe from this list](#).
