

# Dunkettle Progress Update

## *10th December 2021*

[More Information at www.Dunkettle.ie](http://www.Dunkettle.ie)

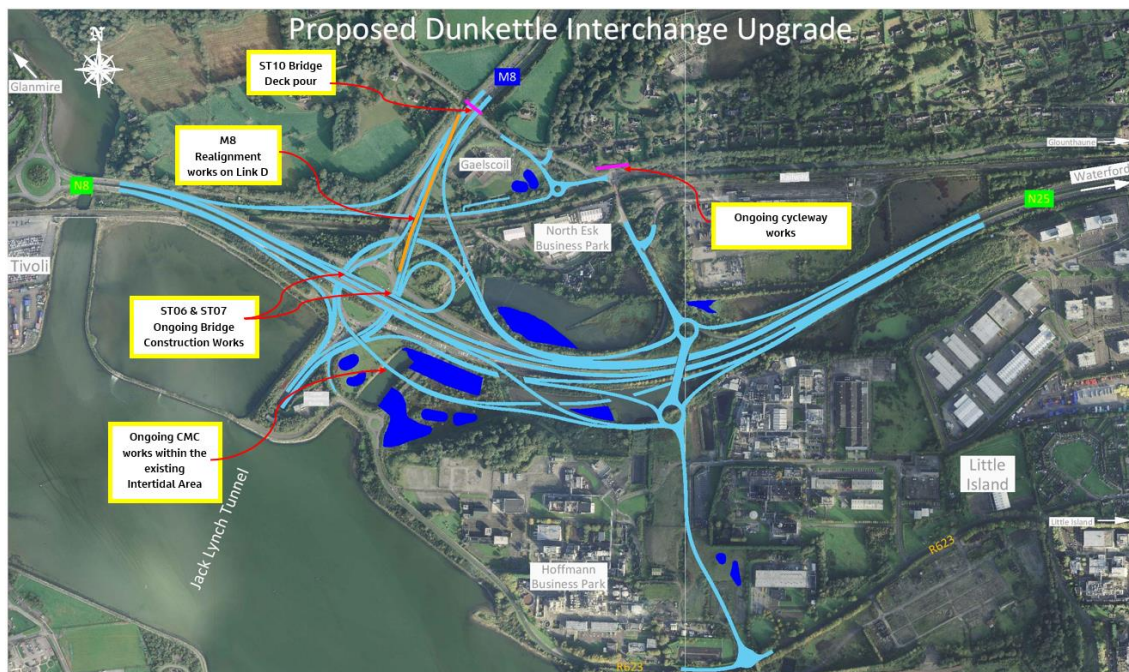


Twitter



Website

## Dunkettle Interchange Upgrade Project



- Earthworks and works on the various new structures required for the new layout will continue on site up to Thursday 23rd December 2021 with the site re-opening on Tuesday 4th January 2022 – see photograph below.



**CMC ground improvement works ongoing for Link C in the area South of the N25 with ST07 in the foreground also.**

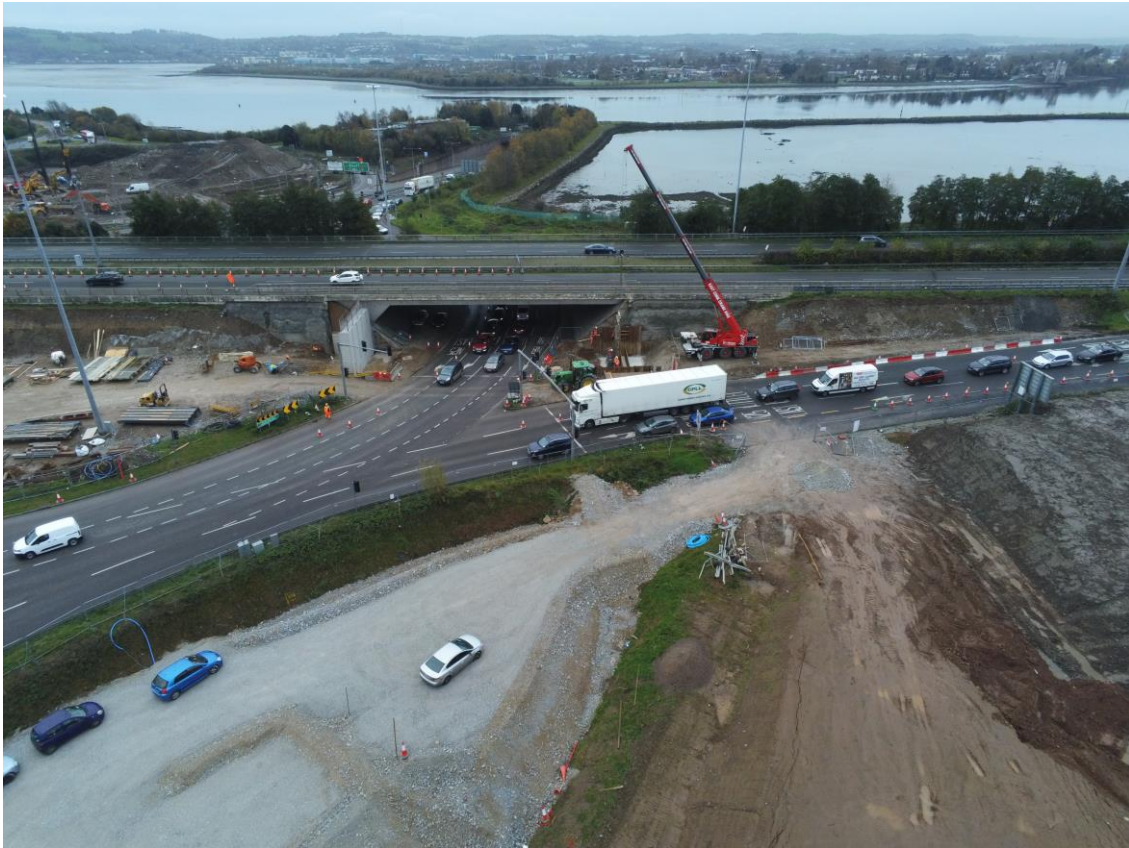
- The L2998 local road between the Burys Bridge Roundabout and Glanmire will be closed in the vicinity of Structure ST10 between 22:00 on Tuesday 14th December 2021 until 05:00 on Wednesday 15th December 2021 in order to facilitate the pouring of the new bridge deck of ST10. Local diversions will be in place – see photograph below.



**Works ongoing at Structure ST10 alongside the M8 southbound.**

- The works for the new Link D road alignment alongside the M8 southbound will continue for the next few weeks. It is currently anticipated that traffic will be switched onto the new alignment early in 2022.
- Works will continue at Structures ST06 & ST07 at the northern side of the Dunkettle Interchange. Off peak lane restrictions will continue in order for the works to be completed. The beams will be placed on Structure ST06 W/C 20th December 2021, this will require a partial closure of the roundabout at the western side under night time working – see photograph below of the ongoing works.





**Construction works ongoing for Structure ST06 at the Dunkettle Interchange Roundabout alongside the N25 eastbound.**

- The works for the new cycleway between on the L2998 are ongoing with no impact on traffic. The new cycleway will tie into the pedestrian bridge which was installed as part of the advance works for the Dunkettle Interchange Project over the Cork to Midleton railway line – see photograph and video below.



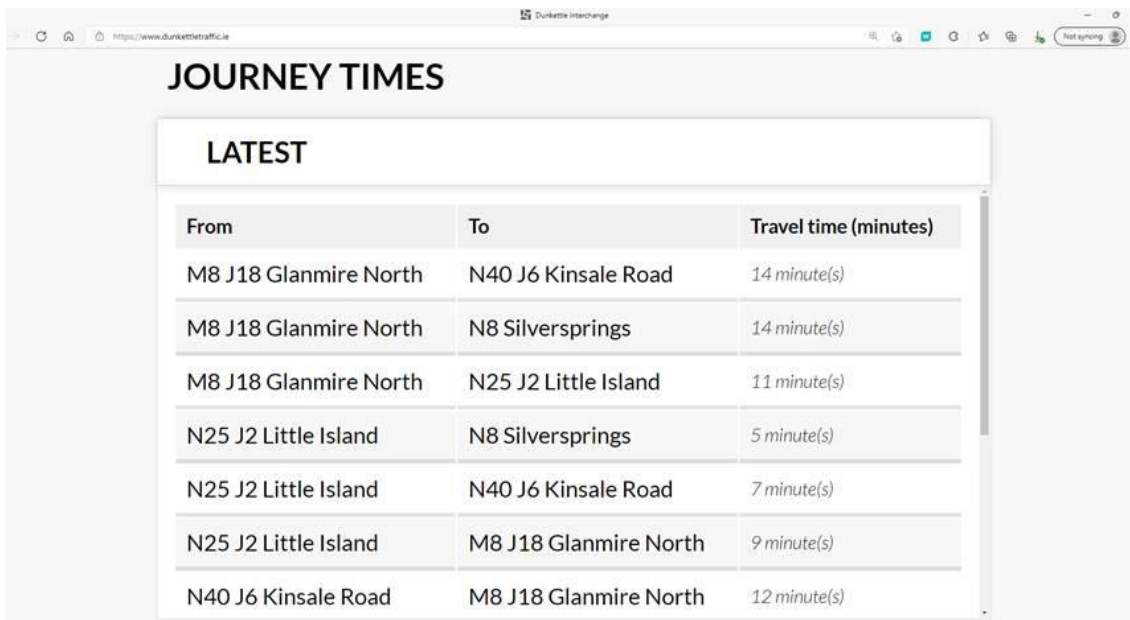
Construction works ongoing for the new cycleway at the Burys Bridge Roundabout.

Please see hereunder link to recent drone footage showing the ongoing works on the new section of cycleway on the L2998:



# Dunkettle Live Traffic App

- There has been a noticeable reduction in traffic volumes over the recent period at peak times following the most recent government advice in relation to “working from home” due to the current pandemic. However, traffic volumes are still running at almost 90% of normal volumes and motorists are again reminded of the availability of the “**Dunkettle Live**” traffic app. In addition to live camera feeds, real time journey duration information is also available for all of the main routes approaching the Dunkettle Interchange Roundabout.



The screenshot shows a web browser window with the URL <https://www.dunkettetraffic.ie>. The page title is "Dunkettle Interchange". The main heading is "JOURNEY TIMES". Below this is a section titled "LATEST" containing a table of travel times between various locations.

From	To	Travel time (minutes)
M8 J18 Glanmire North	N40 J6 Kinsale Road	14 minute(s)
M8 J18 Glanmire North	N8 Silversprings	14 minute(s)
M8 J18 Glanmire North	N25 J2 Little Island	11 minute(s)
N25 J2 Little Island	N8 Silversprings	5 minute(s)
N25 J2 Little Island	N40 J6 Kinsale Road	7 minute(s)
N25 J2 Little Island	M8 J18 Glanmire North	9 minute(s)
N40 J6 Kinsale Road	M8 J18 Glanmire North	12 minute(s)

Click on the image above to see the benefits and features of the Dunkettle Traffic website.





Dunkettle Live App: Download from [Apple App store](#) or from [Google Play store](#)

---

# N40 Intelligent Transport Systems

*Installation of gantry mounted Variable Message Signs and other infrastructure to display traffic information such as journey times.*

Works in relation to the ongoing ITS works will continue as follows:

- With the majority of the larger items of ITS equipment now in place, works over the coming weeks will focus on the offline installation of Over-Height Vehicle Detection (OHVD) Equipment, with minimal impact on traffic.



Commissioning of Traffic Control Barrier at the N40 Mahon Junction.

As always, if there are any queries or comments in relation to these works, please contact us at:

**Phone:** 1800 810077 (at any time), **Email:** [roadconstruction@ccc-site.com](mailto:roadconstruction@ccc-site.com).





Further information on the Dunkettle Scheme can be accessed [www.dunkettle.ie](http://www.dunkettle.ie).

Real time traffic information can be accessed via [www.dunkettletraffic.ie](http://www.dunkettletraffic.ie) or on the Dunkettle Live App ([Apple App store](#) and [Google Play store](#)).

New subscribers to the newsletter can register: [www.dunkettle.ie/newslettersignup](http://www.dunkettle.ie/newslettersignup)

---

Your email address is on a list that we use to keep you informed on the progress on the N40 and Dunkettle Interchange works.

Want to change how you receive these emails?

You can [update your preferences](#) or [unsubscribe from this list](#).

---