

# Dunkettle Interchange Upgrade Project

[More Information at www.Dunkettle.ie](http://www.Dunkettle.ie)

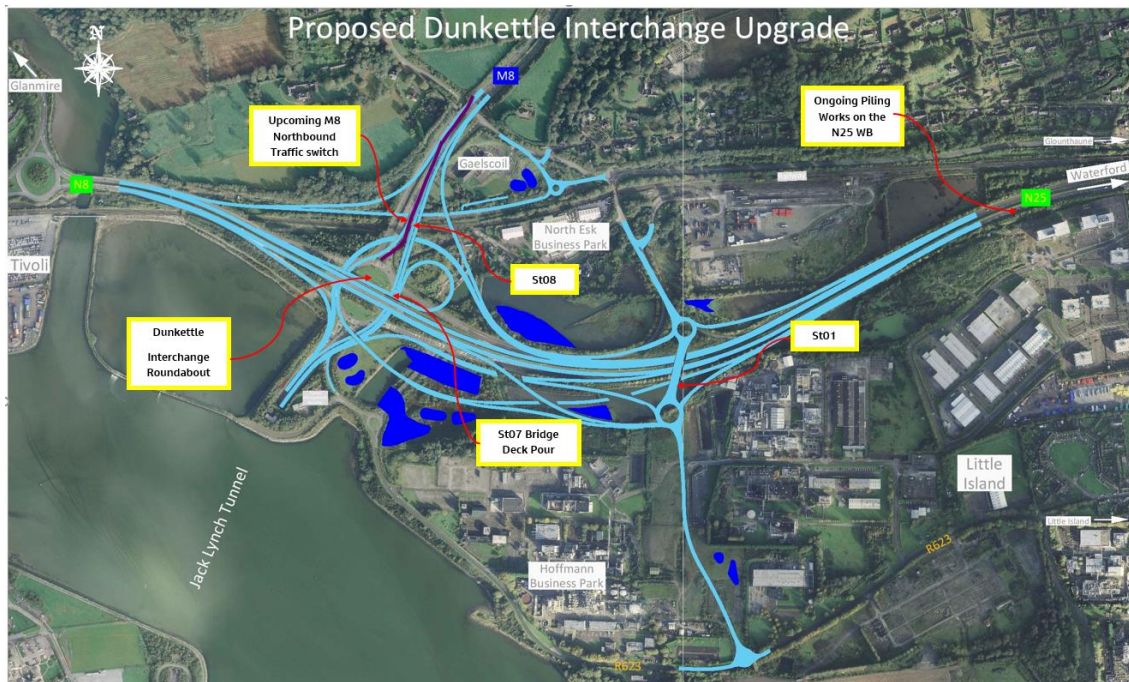
## Dunkettle Progress Update *11th February 2022*



[Twitter](#)



[Website](#)



- The Ibis slip road reopened to traffic last Sunday 6th February 2022 as planned. The Dunkettle Interchange Roundabout traffic light timings will continue to be optimised over the coming period, but motorists on the M8 southbound should continue to allow additional time for their journeys, particularly during the AM peak – see photograph below.



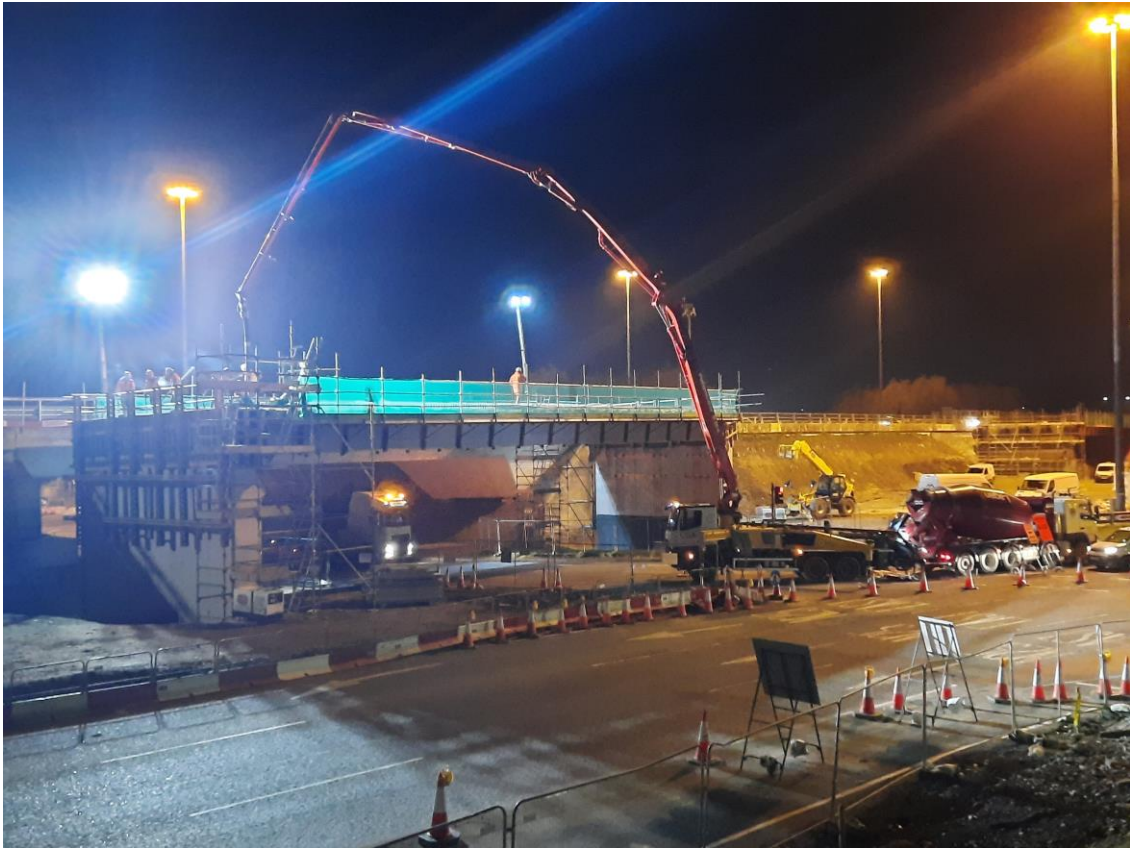
**Traffic heading southbound at the Ibis slip merge with the M8 on the new temporary road alignment.**

- The focus on site has now switched to the M8 northbound – a temporary two lane alignment will be opened to traffic at 10:00 am on this coming Sunday 13th February 2022, directing traffic over the newly completed Structure ST08. M8 northbound motorists are advised to take particular care over the coming days as the new alignment becomes established – see photograph below.



**Preparatory works ongoing for the upcoming M8 Northbound switch ongoing on site.**

- The bridge deck for Structure ST07 was poured last night successfully utilising a night time closure of the eastern side of the Dunkettle Interchange Roundabout – see photograph below.



**Works ongoing for the ST07 deck pour over the existing Dunkettle Interchange Roundabout.**

- We hope to place the last remaining beams at Structure St01 during the coming fortnight. These works will be offline with no temporary traffic management measures required. The beam placement works will be particularly noticeable from the N25 westbound - – see photograph below.



**Works ongoing on site to complete the southern abutment of Structure St01 in advance of the beam placement works.**

- N25 westbound motorists will have also noticed piling works ongoing in the verge area. These works are required to support ITS gantries and equipment which will be installed in this area – see photograph below.



Piling works ongoing alongside the N25 westbound.

**See video indicating the new M8 northbound layout which will be in place from Sunday 13th February 2022:**



---

## Dunkettle Live Traffic App



Click on the icon above to see the benefits of the Dunkettle Live App.



Dunkettle Live App: Download from [Apple App store](#) or from [Google Play store](#)

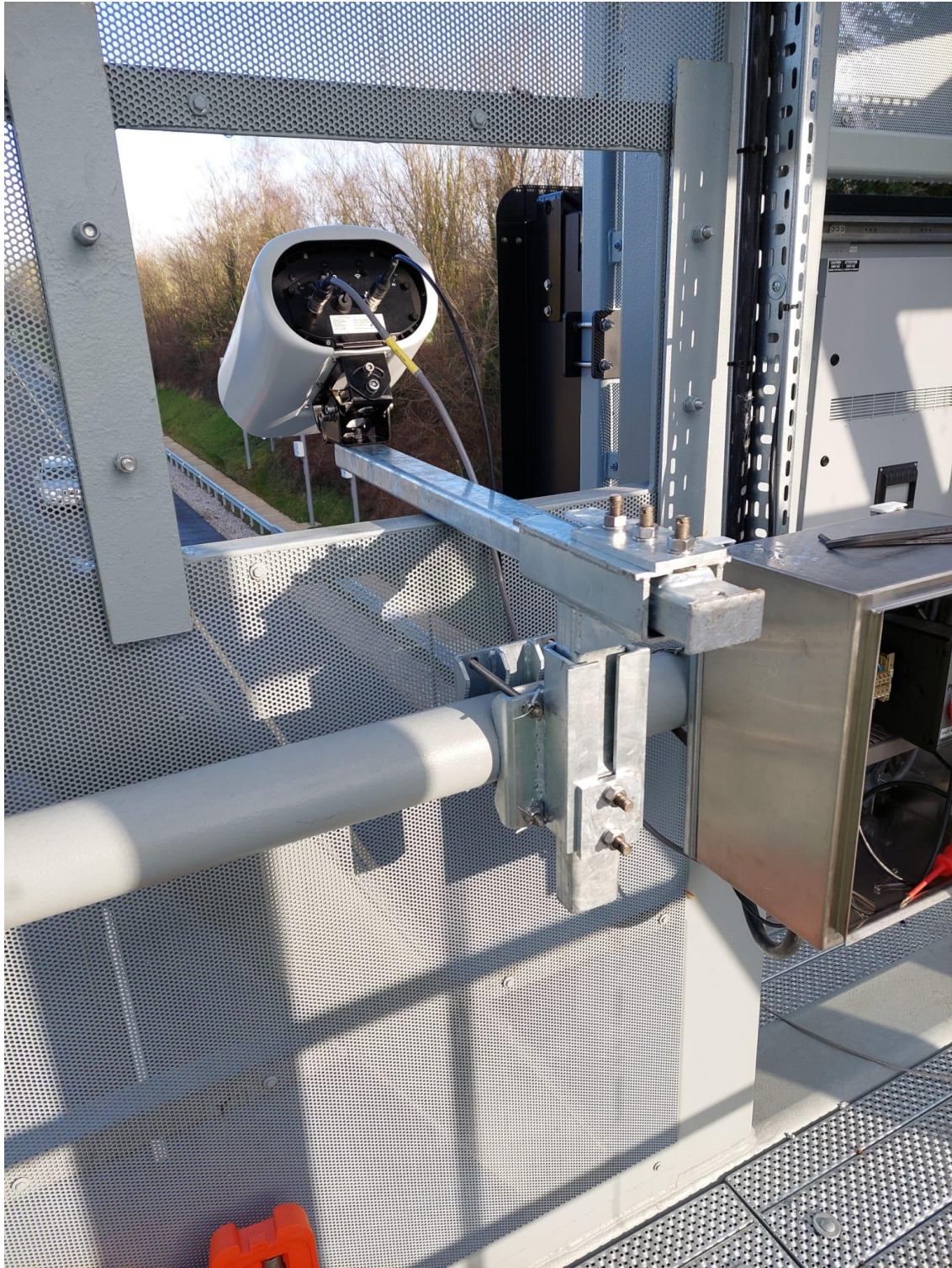
---

# N40 Intelligent Transport Systems

*Installation of gantry mounted Variable Message Signs and other infrastructure to display traffic information such as journey times.*

Works will continue next week on the ITS sites as follows:

- ITS works over the coming week will focus on commissioning the new Over-Height Vehicle Detection (OHVD) system on the approaches to the Jack Lynch Tunnel. These works will take place on overhead gantries and in verges without impact on traffic.



ANPR camera on gantry over M8 Dunkettle approach.

---

As always, if there are any queries or comments in relation to these works, please contact us at:

**Phone:** 1800 810077 (at any time), **Email:** [roadconstruction@ccc-site.com](mailto:roadconstruction@ccc-site.com).



Further information on the Dunkettle Scheme can be accessed [www.dunkettle.ie](http://www.dunkettle.ie).

Real time traffic information can be accessed via [www.dunkettletraffic.ie](http://www.dunkettletraffic.ie) or on the Dunkettle Live App ([Apple App store](#) and [Google Play store](#)).

New subscribers to the newsletter can register: [www.dunkettle.ie/newslettersignup](http://www.dunkettle.ie/newslettersignup)

---

Your email address is on a list that we use to keep you informed on the progress on the N40 and Dunkettle Interchange works.

Want to change how you receive these emails?

You can [update your preferences](#) or [unsubscribe from this list](#).

---