

# Dunkettle Interchange Upgrade Project



More at  
[www.Dunkettle.ie](http://www.Dunkettle.ie)



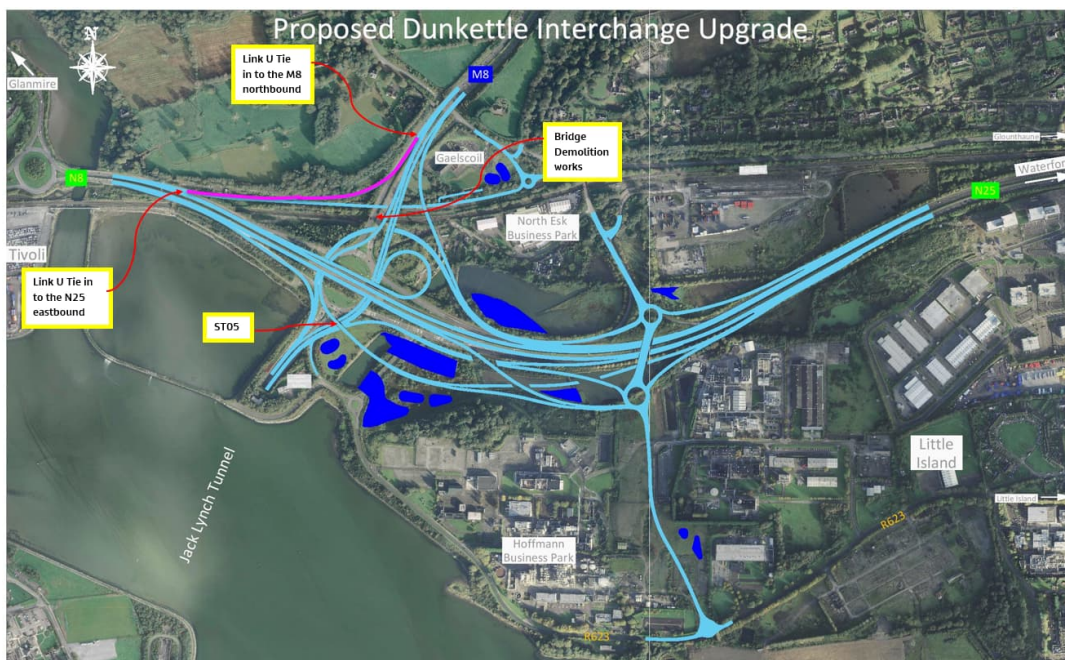
## Dunkettle Progress Update *11th March 2022*



Twitter



Website



The deck of the existing railway bridge alongside Structure St08 was successfully removed under night time working – see photograph below.



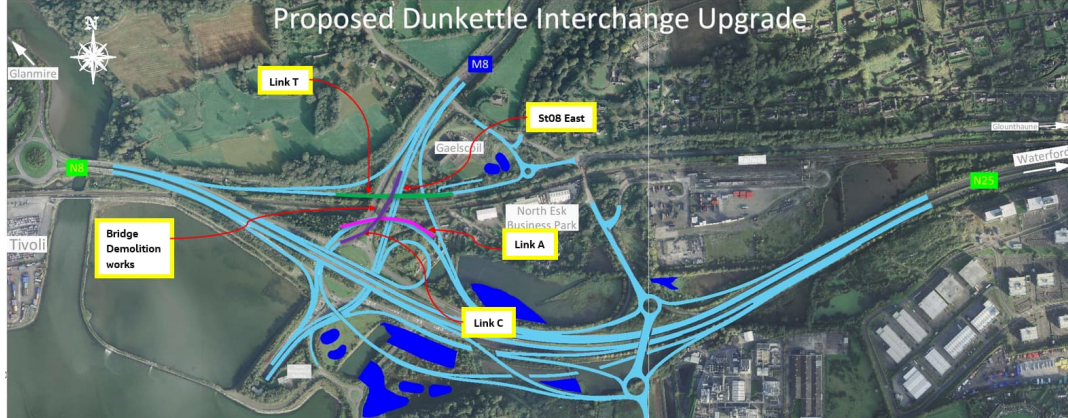
**Removal of the existing railway bridge deck in sections ongoing at night.**

The existing railway bridge is being removed to facilitate the new link roads A, C and T as highlighted on the sketch below. The new bridge will have to increase significantly in size in order to facilitate the new link roads. Construction of the new bridge will now get underway before the end of March - see photograph below also.



**The existing railway bridge deck removed alongside the recently constructed Structure St08.**





**Proposed layout of the new link roads at the location of the existing railway bridge.**

We still hope to place the beams at Structure St05 ahead of the bank holiday weekend probably on the night of Tuesday 15th March – see photograph below.



**Final preparations ongoing at Structure St05 ahead of the upcoming beam placement.**

Significant night time working will continue next week focused on the area where Link U will tie into the existing N25 eastbound.

The northern tie-in to the M8 northbound is being progressed under day time working and works here will continue over the coming weeks – see photograph below.

As mentioned in previous newsletters, the tie-in of Link U to the M8 northbound allows us to widen the north end of the parallel cycle/walkway to its final alignment. In doing so, we will now need to close the cycle/walkway for two days, on Monday 14th and Tuesday 15th March. Signs are in place to advise regular users of this.



**Pavement tie in works being completed for the Link U tie in with the M8 northbound.**

The opening of Link U will necessitate weekend working and we now hope to that Link U will open by the first or second week of April 2022.

**See video below indicating the ongoing works on Link C / Link L.**



**Dunkettle Live Traffic App**





Click on the icon above to see the benefits of the Dunkettle Live App.



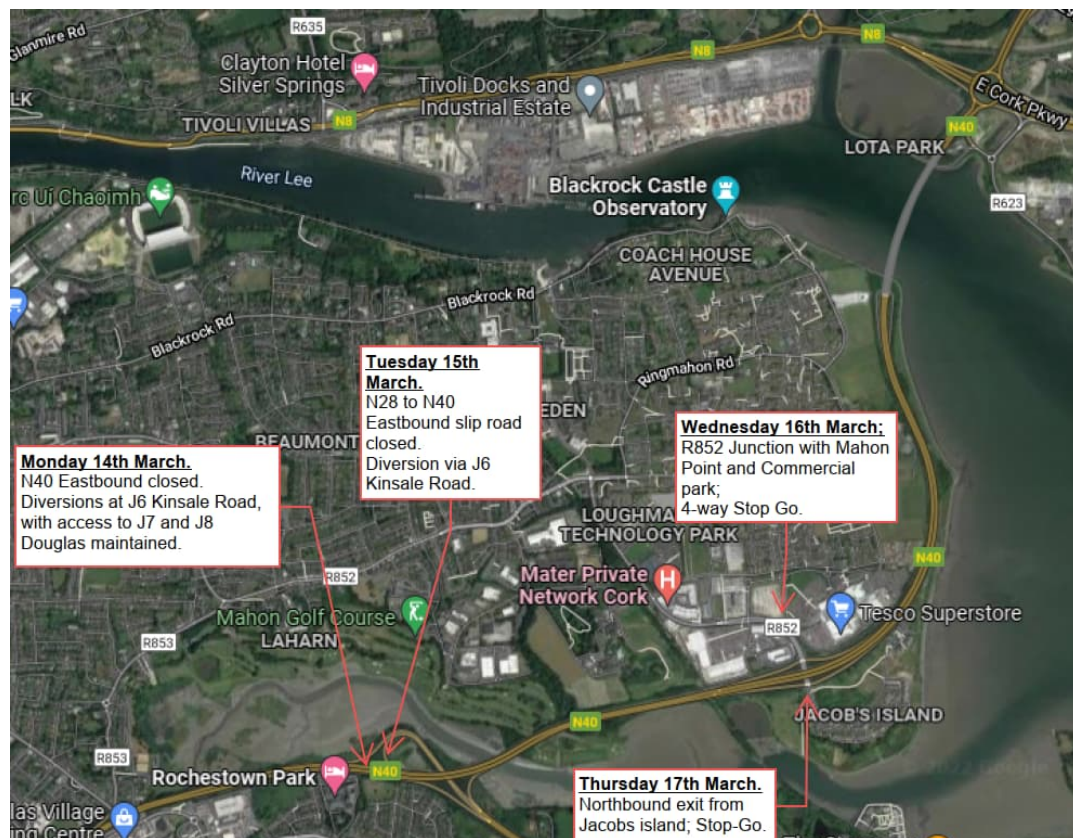
**Dunkettle Live App: Download from [Apple App store](#) or from [Google Play store](#)**

## N40 Intelligent Transport Systems

*Installation of gantry mounted Variable Message Signs and other infrastructure to display traffic information such as journey times.*

Commissioning of the new Over-Height detection units on the N40 south of the tunnel has been proceeding during this week's tunnel closures, in order to minimise the number of road/tunnel closures. Over the next few weeks, this process will move on to the Over-Height units

on the approach roads to the N40, and approaches to the Dunkettle Interchange, requiring a series of one-night closures at various locations. The image below summarises the planned locations and dates of next week's night-time closures.



## Locations and Dates of Night Time closures for ITS commissioning, 14th - 17th March

As always, if there are any queries or comments in relation to these works, please contact us at:

**Phone:** 1800 810077 (at any time),

**Email:** [roadconstruction@ccc-site.com](mailto:roadconstruction@ccc-site.com).

Further information on the Dunkettle Scheme can be accessed [www.dunkettle.ie](http://www.dunkettle.ie).

Real time traffic information can be accessed via [www.dunkettletraffic.ie](http://www.dunkettletraffic.ie) or on the Dunkettle Live App ([Apple App store](#) and [Google Play store](#)).

New subscribers to the newsletter can register: [www.dunkettle.ie/newslettersignup](http://www.dunkettle.ie/newslettersignup)



More at  
[www.Dunkettle.ie](http://www.Dunkettle.ie)



N40 and Dunkettle Interchange works.

Want to change how you receive these emails?

You can [update your preferences](#) or [unsubscribe from this list](#).



This email was sent to <<Email address>>

[why did I get this?](#) [unsubscribe from this list](#) [update subscription preferences](#)

N40/Dunkettle Team · Tunnel Management Building · Dunkettle · Glanmire, CO. CORK T45 E898 · Ireland