

# Dunkettle Progress Update

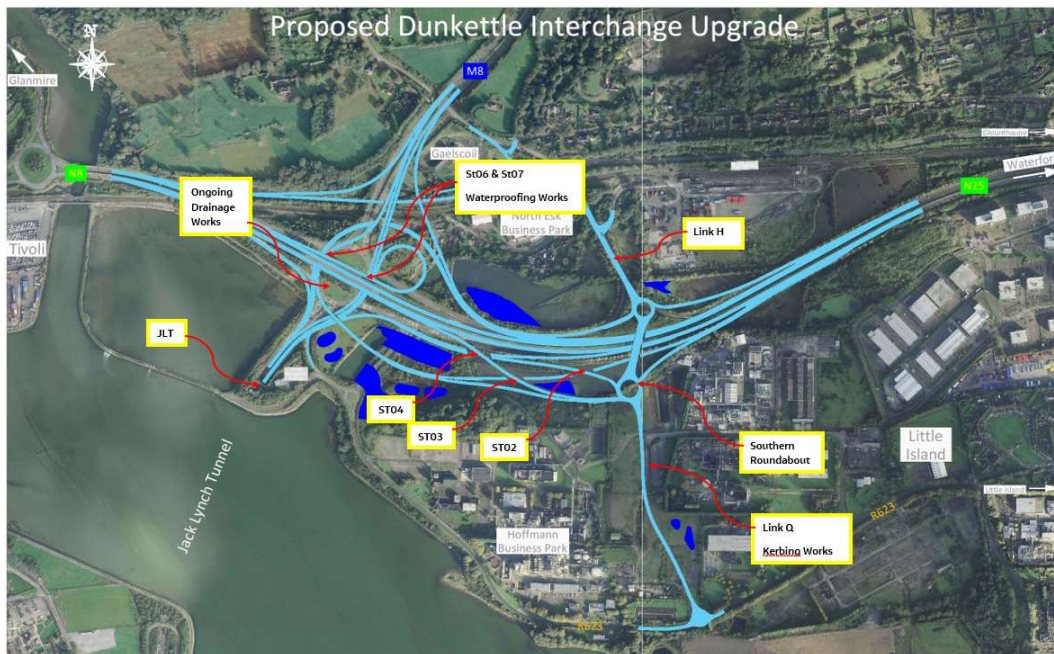
## *03rd June 2022*



Twitter



Website

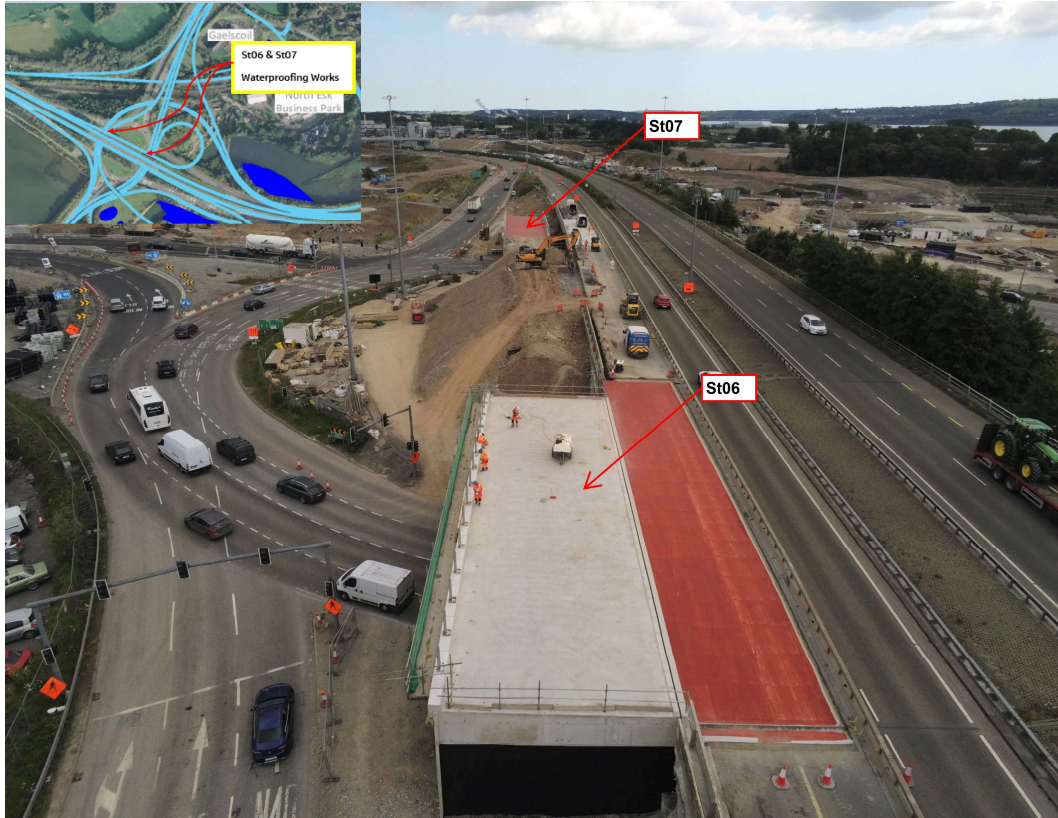


- Drainage installation works are continuing in the southern half of the Dunkettle Interchange Roundabout centre island – see photograph below.



**Drainage works continuing in the southern half of the Dunkettle Interchange Roundabout.**

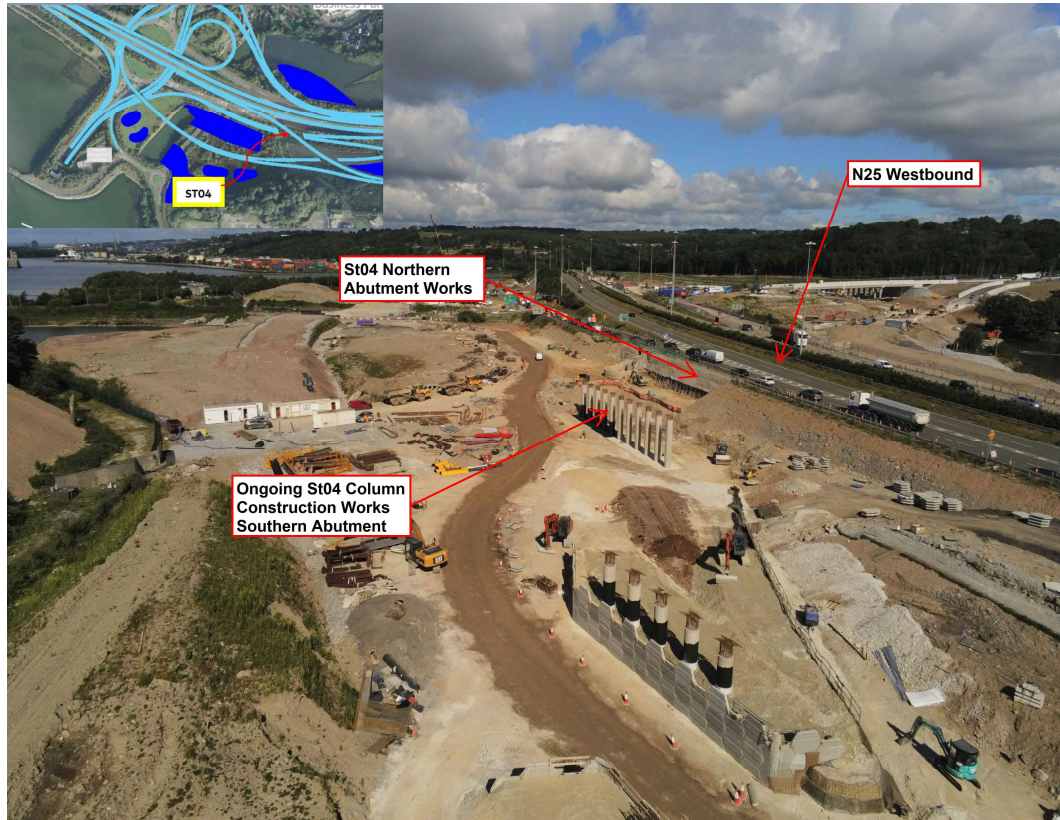
- Waterproofing works to the bridge decks on Structures St06 and St07 have been completed next to the N25 eastbound - see photograph below.



**Waterproofing works to the bridge decks on Structures St06 and St07 have been completed.**

- Works are continuing on the various Structures in the area south of the N25. Column construction works on the southern side of what will become Structure St04 have now been completed - see photograph below. Works will continue on the 3 structures in this area for several months.





Ongoing works at Structure St04 south of the N25.

- Kerb installation works have now been completed on Link Q and we hope to progress surfacing works in this area from mid-June 2022 - see photograph below.



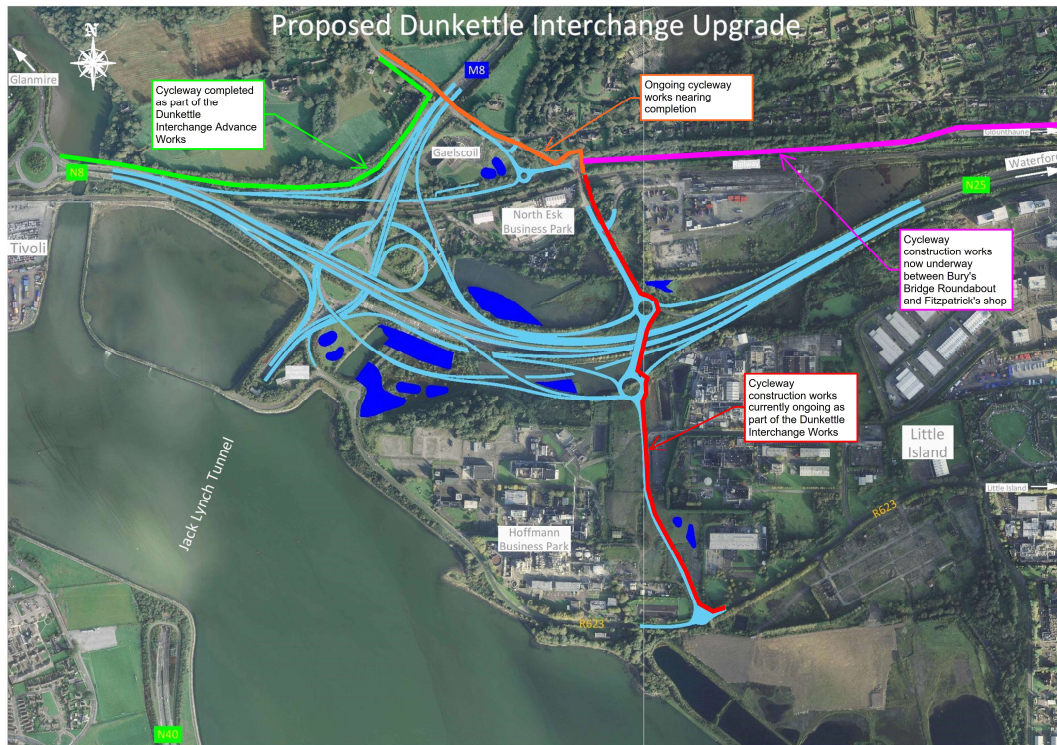


**Kerb installation completed at Link Q.**

- Footway/Cycleway works are continuing throughout the Dunkettle Interchange Upgrade Project - see layout plan below

- The section of footway/cycleway, shown coloured orange on the layout plan below, is now nearing substantial completion.
- The section of footway/cycleway running alongside Link H and Link Q, shown coloured red in the layout plan, should reach completion before the end of 2022. (This will provide a segregated footway/cycleway link from Dunkettle Roundabout to Little Island).
- The section of footway/cycleway, shown coloured pink in the layout plan, from the new railway bridge at Structure ST12 to

Fitzpatrick's shop in Glounthaune is now under construction – see photograph below.



**Layout Plan for the footway/cycleway route through the Dunkettle Interchange.**





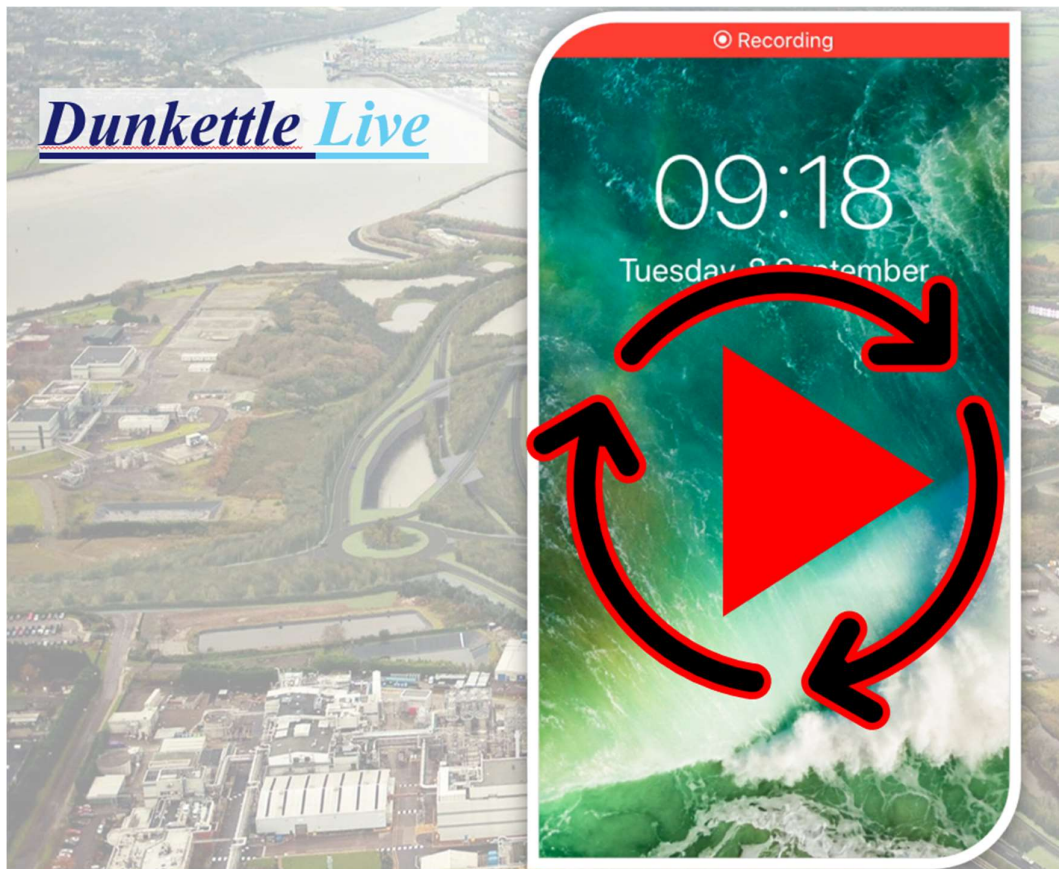
Works continuing on footway/cycleway along the L3004 towards Glounthaune.

**This weeks progress update shows ongoing works on Link Q1**





# Dunkettle Live Traffic App



Click on the icon above to see the benefits of the Dunkettle Live App.



Dunkettle Live App: Download from [Apple App store](#) or from [Google Play store](#)

---

# N40 Intelligent Transport Systems

*Installation of gantry mounted Variable Message Signs and other infrastructure to display traffic information such as journey times.*

- Works continued to focus on the commissioning of the new ITS equipment this week on the N40 northbound approach to the tunnel.

---

As always, if there are any queries or comments in relation to these works, please contact us at:  
**Phone:** 1800 810077 (at any time), **Email:** [roadconstruction@ccc-site.com](mailto:roadconstruction@ccc-site.com).

Further information on the Dunkettle Scheme can be accessed [www.dunkettle.ie](http://www.dunkettle.ie).

Real time traffic information can be accessed via [www.dunkettletraffic.ie](http://www.dunkettletraffic.ie) or on the Dunkettle Live App ([Apple App store](#) and [Google Play store](#)).

New subscribers to the newsletter can register: [www.dunkettle.ie/newslettersignup](http://www.dunkettle.ie/newslettersignup)



---

Your email address is on a list that we use to keep you informed on the progress on the  
N40 and Dunkettle Interchange works.

Want to change how you receive these emails?

You can [update your preferences](#) or [unsubscribe from this list](#).

---