

Dunkettle Progress Update

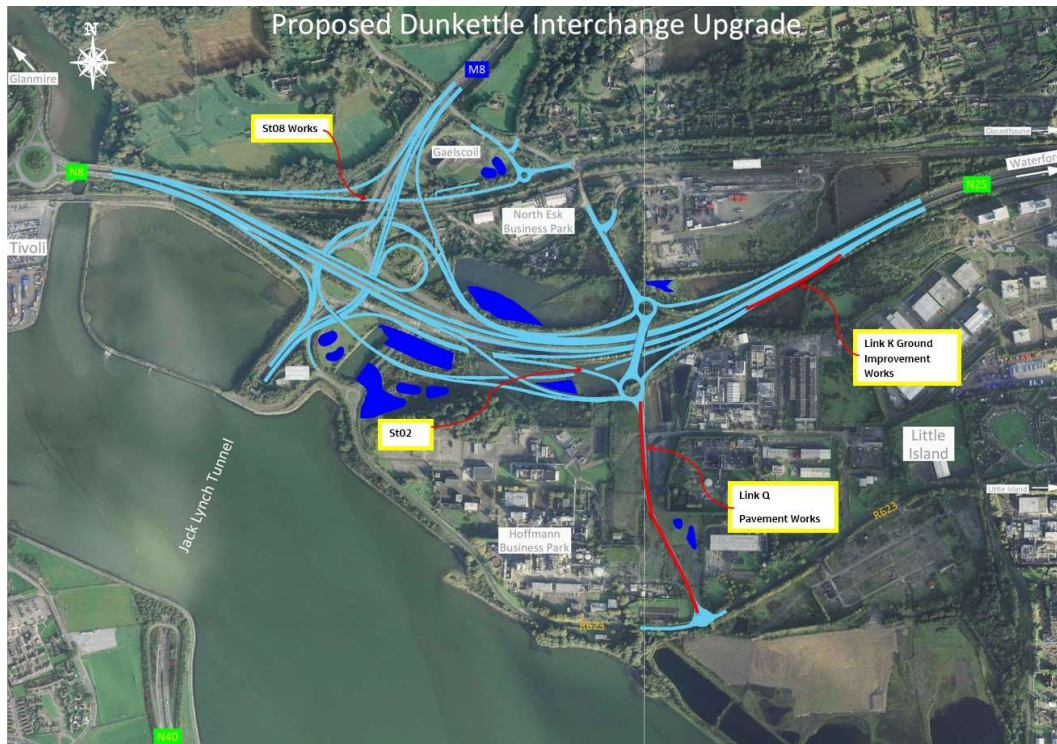
24th June 2022



Twitter



Website



- Works are continuing across the site at all remaining structures and embankment construction areas.

- At Structure St08, the columns are completed at the northern side as noted in our previous updates and the reinforced soil wall is now nearing completion – see photograph below.



Reinforced soil wall construction works ongoing at St08 alongside the M8 northbound.

- Westbound commuters on the N25 will have noticed progress at Structure St02 where the foundation to receive the bridge deck beams was poured during the period. We hope to have the beams in position at this structure before the end of September 2022 – see photograph below.



St02 works ongoing alongside the N25 westbound.

- Surfacing works are progressing well at Link Q which will ultimately provide the western entrance and exit to Little Island – see photograph below. We hope to complete the current phase of surfacing works at this location by the end of this month.



Pavement works ongoing at Link Q.

- Installation of vertical drainage for ground improvement underneath the proposed embankments is now nearing completion at the last remaining area on site for Link K alongside the N25 westbound – see photograph below.

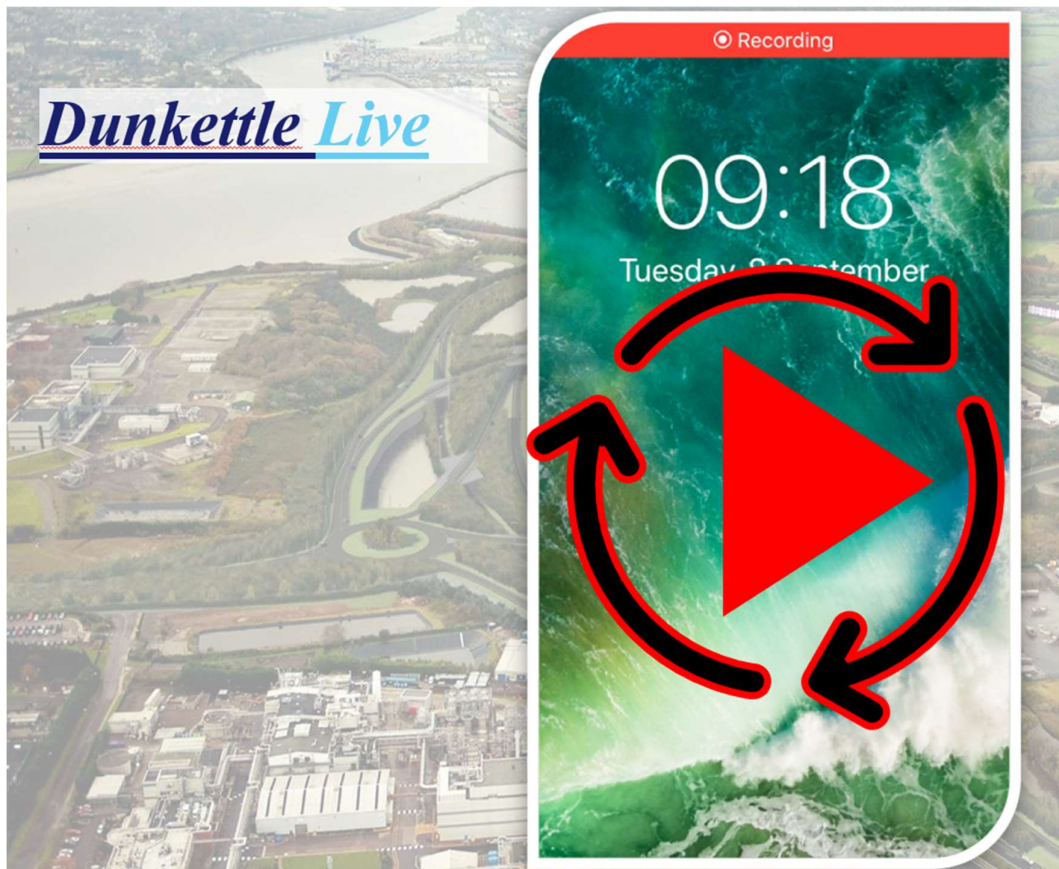


Vertical drainage installation ongoing alongside the N25 westbound.

This weeks progress update video shows ongoing pavement works on Link Q1, connecting the R623 Little Island with the N25



Dunkettle Live Traffic App



Click on the icon above to see the benefits of the Dunkettle Live App.



Dunkettle Live App: Download from [Apple App store](#) or from [Google Play store](#)

As always, if there are any queries or comments in relation to these works, please contact us at:
Phone: 1800 810077 (at any time), **Email:** roadconstruction@ccc-site.com.



Further information on the Dunkettle Scheme can be accessed www.dunkettle.ie.

Real time traffic information can be accessed via www.dunkettletraffic.ie or on the Dunkettle Live App ([Apple App store](#) and [Google Play store](#)).

New subscribers to the newsletter can register: www.dunkettle.ie/newslettersignup



[More at www.Dunkettle.ie](http://www.Dunkettle.ie)



Your email address is on a list that we use to keep you informed on the progress on the N40 and Dunkettle Interchange works.

Want to change how you receive these emails?

You can [update your preferences](#) or [unsubscribe from this list](#).
