

Dunkettle Progress Update

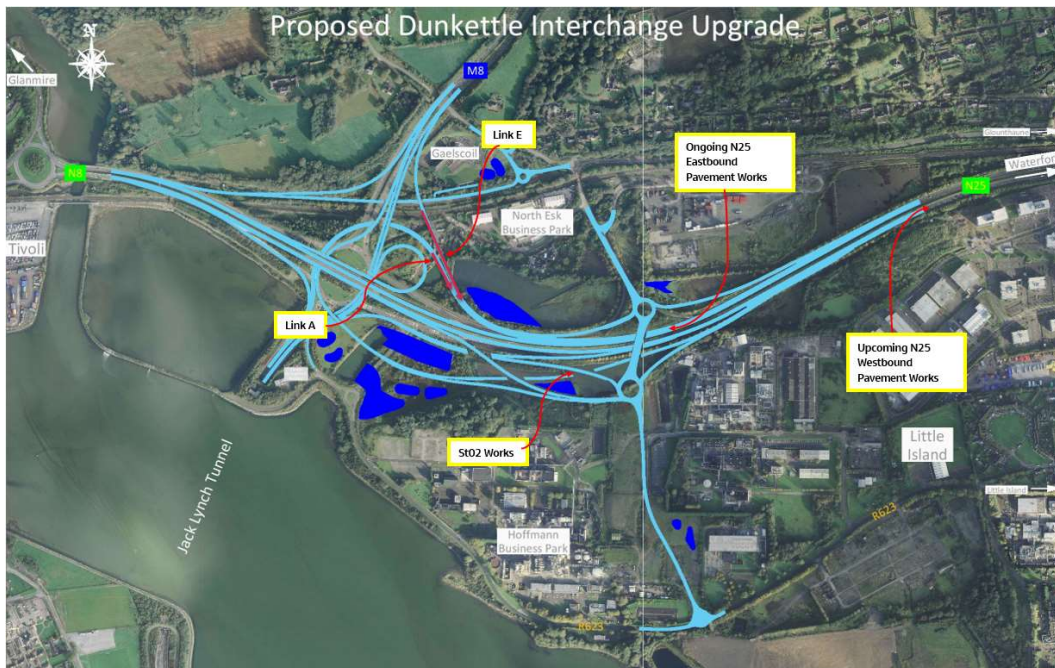
12th August 2022



Twitter



Website



- Motorists are again advised in relation to the speed control measures which will be in place regularly on the Dunkettle Interchange site over the coming weeks.

- Works at Structures St02, St03 & St04 are continuing offline alongside the N25 westbound. Bridge beams for Structure ST02 were placed as planned under night time working on Tuesday 09th August 2022 – see photograph below.



Bridge beams being placed at ST02 alongside the N25 Westbound.

- Surfacing works will continue tonight on the N25 eastbound with lane restrictions in place from 21:00 to 05:00 on Saturday morning 13th August 2022. The N25 eastbound will be closed on Monday and Tuesday night the 15th & 16th August 2022 to allow the final surfacing layer to be placed. Traffic will be switched onto the revised lane configuration when the road is reopened on Wednesday morning 17th August 2022. Lane restrictions will then be required on the N25 eastbound on Wednesday and Thursday night the 17th &

18th of August 2022 in order to install the temporary safety barriers which allow the works to be progressed in the central median of the N25. The works are being carried out at night to minimise the disruption to traffic – see photograph below.



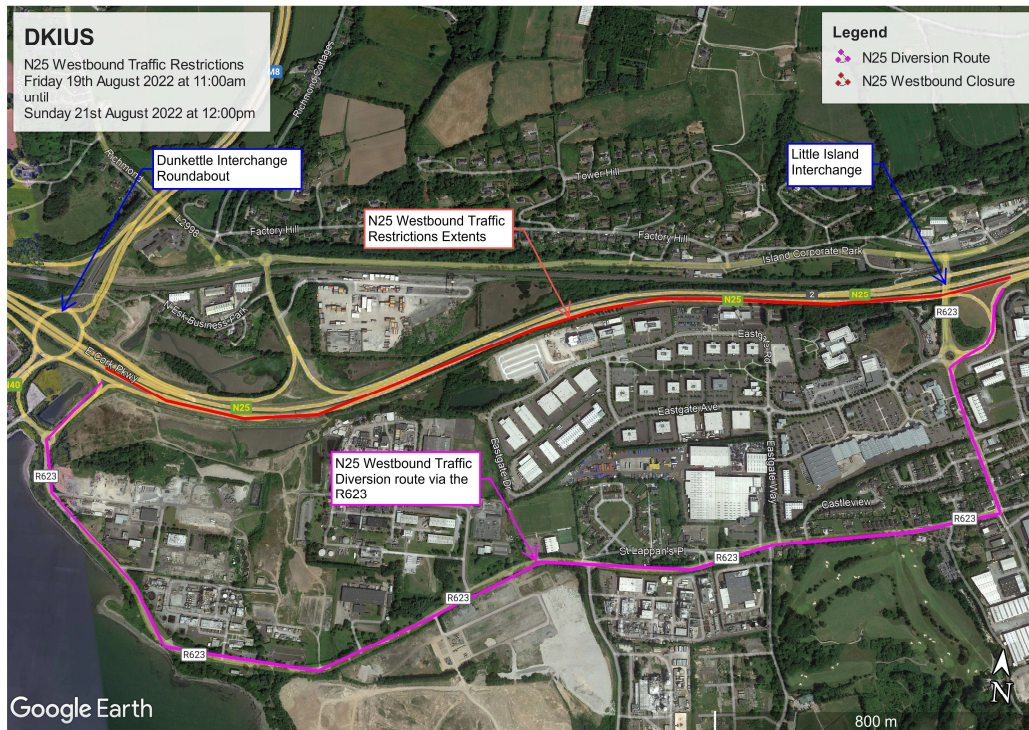
Pavement works ongoing at night on the N25 eastbound.

- Surfacing works have also been progressed during day time working over the last week in the offline areas of Link A & Link E which will merge with the N25 eastbound. These works will continue over the next week also – see photograph below.



Pavement works being progressed offline in the Link A & E areas.

- A major Traffic Management operation is then required next weekend in association with surfacing works on the N25 Westbound between the Little Island Interchange and the Dunkettle Interchange Roundabout. The N25 Westbound will be reduced to single lane running from 11:00 to 20:00 on Friday 19th August 2022. The N25 westbound will then be closed fully from 20:00 on Friday 19th August 2022 with traffic diverted via the R623 through Little Island (see layout plan below). We expect that the N25 westbound will reopen to traffic before 12:00 pm on Sunday 21st August 2022. Members of An Garda Siochana will be in place over the weekend to assist with traffic flow but motorists should definitely allow extra time for journeys on the N25 Westbound from Friday 19th August at 11:00am to Sunday 21st August 2022 at 12:00pm.



Traffic diversion route through Little Island.

- The proposed works on the N25 Westbound are weather dependent. We will issue an additional specific update on Wednesday 17th August 2022 to confirm the arrangements.

This weeks video shows the ongoing pavement works in Link E area which will form the new free flow link from the M8 southbound to the N25 eastbound



Dunkettle Live Traffic App



Click on the icon above to see the benefits of the Dunkettle Live App.



Dunkettle Live App: Download from [Apple App store](#) or from [Google Play store](#)



As always, if there are any queries or comments in relation to these works, please contact us at:

Phone: 1800 810077 (at any time), **Email:** roadconstruction@ccc-site.com.

Further information on the Dunkettle Scheme can be accessed www.dunkettle.ie.

Real time traffic information can be accessed via www.dunkettletraffic.ie or on the Dunkettle Live App ([Apple App store](#) and [Google Play store](#)).

New subscribers to the newsletter can register: www.dunkettle.ie/newslettersignup



[More at www.Dunkettle.ie](http://www.Dunkettle.ie)



Your email address is on a list that we use to keep you informed on the progress on the N40 and Dunkettle Interchange works.

Want to change how you receive these emails?

You can [update your preferences](#) or [unsubscribe from this list](#).
