

# Dunkettle Progress Update

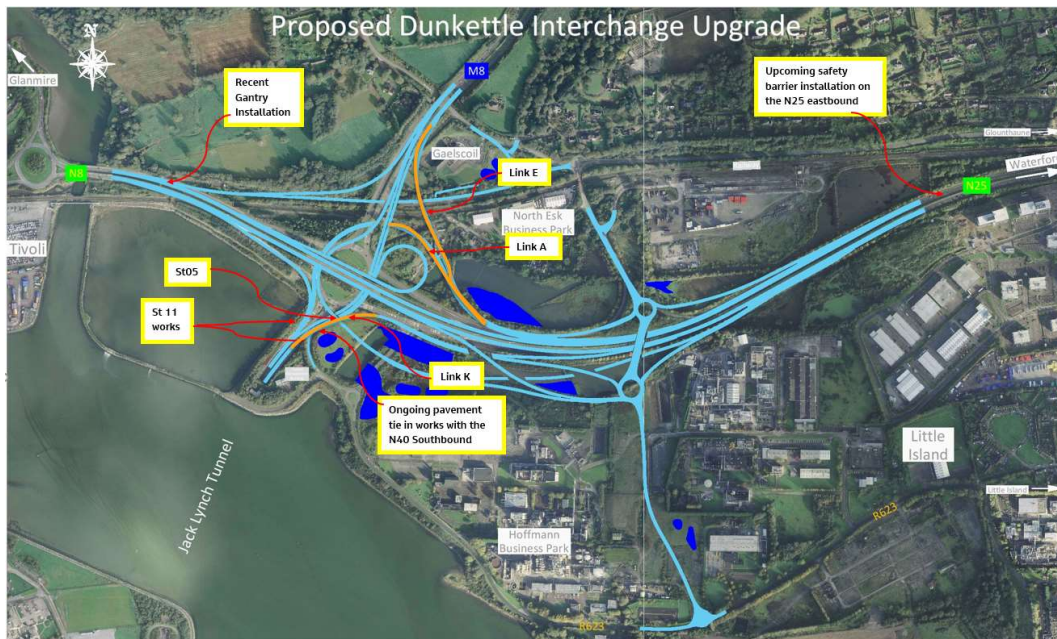
## *16th September 2022*



Twitter

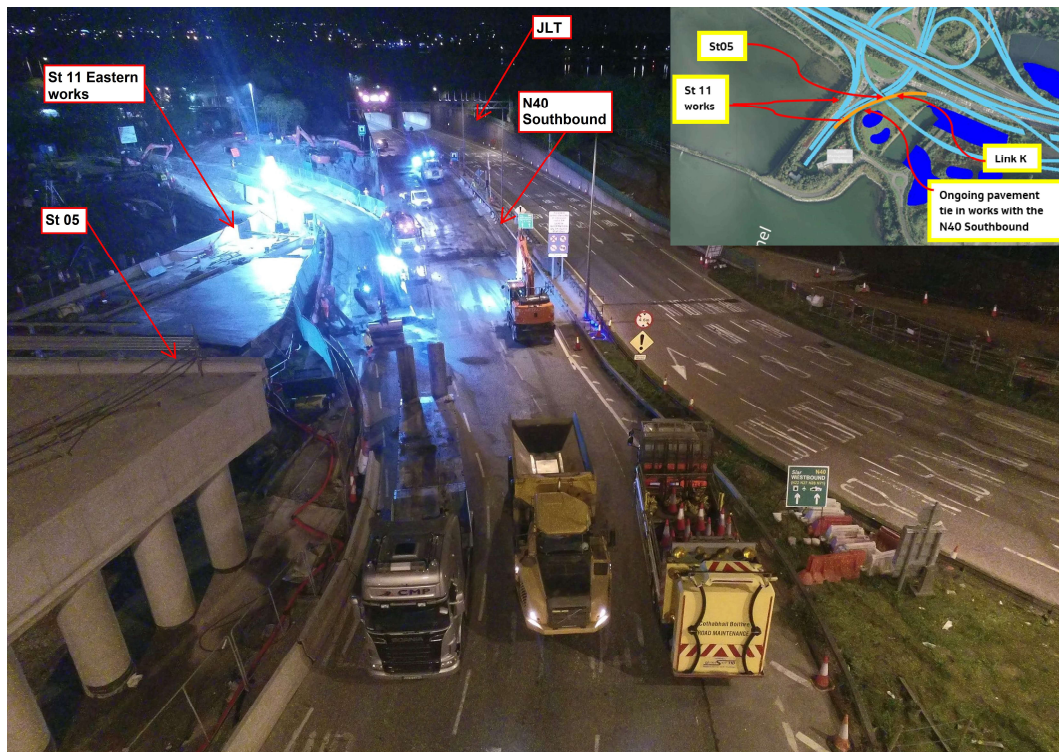


Website



- Motorists are advised that the speed control van will be on site on a full time basis over the coming weeks.

- From a structures point of view, the main focus is on Structure St11, the retaining walls at the northern side of the Jack Lynch Tunnel. At present, we are focused on the completion of the new retaining walls at the eastern side of the N40 southbound. This will enable us to direct traffic from Link K (N25 Westbound diverge to the Dunkettle Interchange Roundabout) under Structure ST05 – see aerial photograph below. The opening of this realignment will be published in advance.

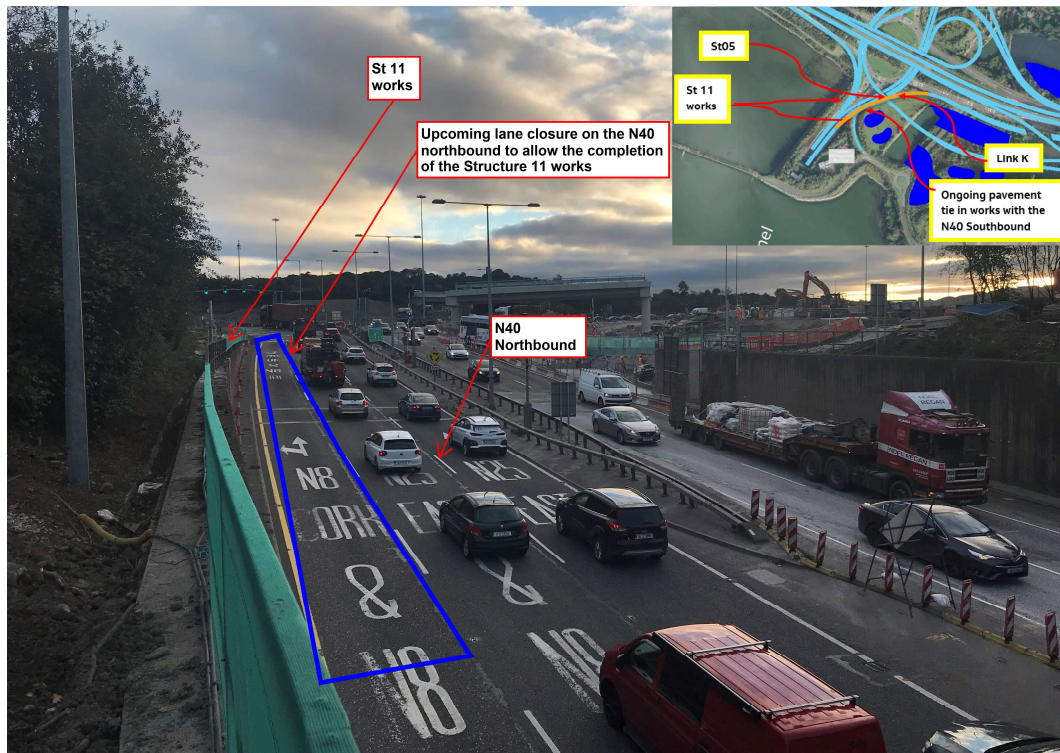


**Works ongoing at St11 alongside the N40 southbound approach to the Jack Lynch Tunnel.**

- The focus will then switch to the western foundation of Structure St11. Demolition of the existing wall at this location will necessitate the closure of the 4th lane of the N40 northbound approach to the

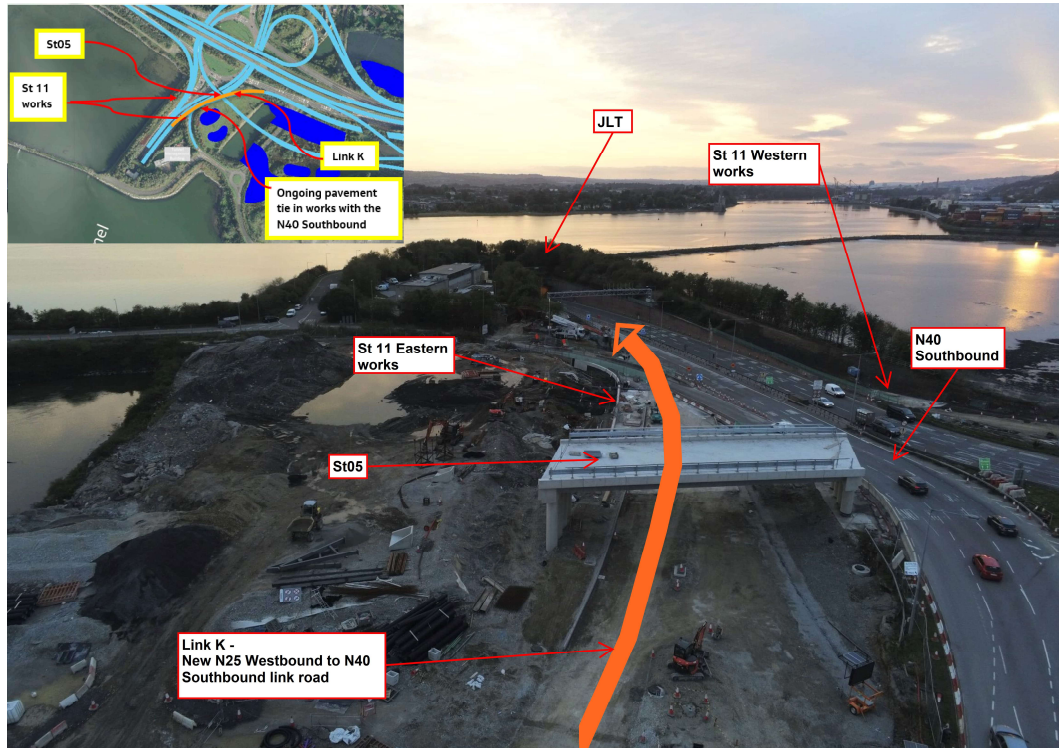


Dunkettle Interchange Roundabout from the Jack Lynch Tunnel – see photograph below. Again, the activation date for this closure will be notified in advance.



Preparatory works ongoing at the western side of the new St11 retaining walls alongside the N40 Northbound.

- Surfacing works in the area adjacent to Structure ST11 will continue tonight Friday 16th September 2022 under night time working which will necessitate the closure of the Jack Lynch Tunnel in both directions from 21:00 to 04:00 – see photograph below.



Surfacing works ongoing for the N40 southbound tie-in on the approach to the Jack Lynch Tunnel.

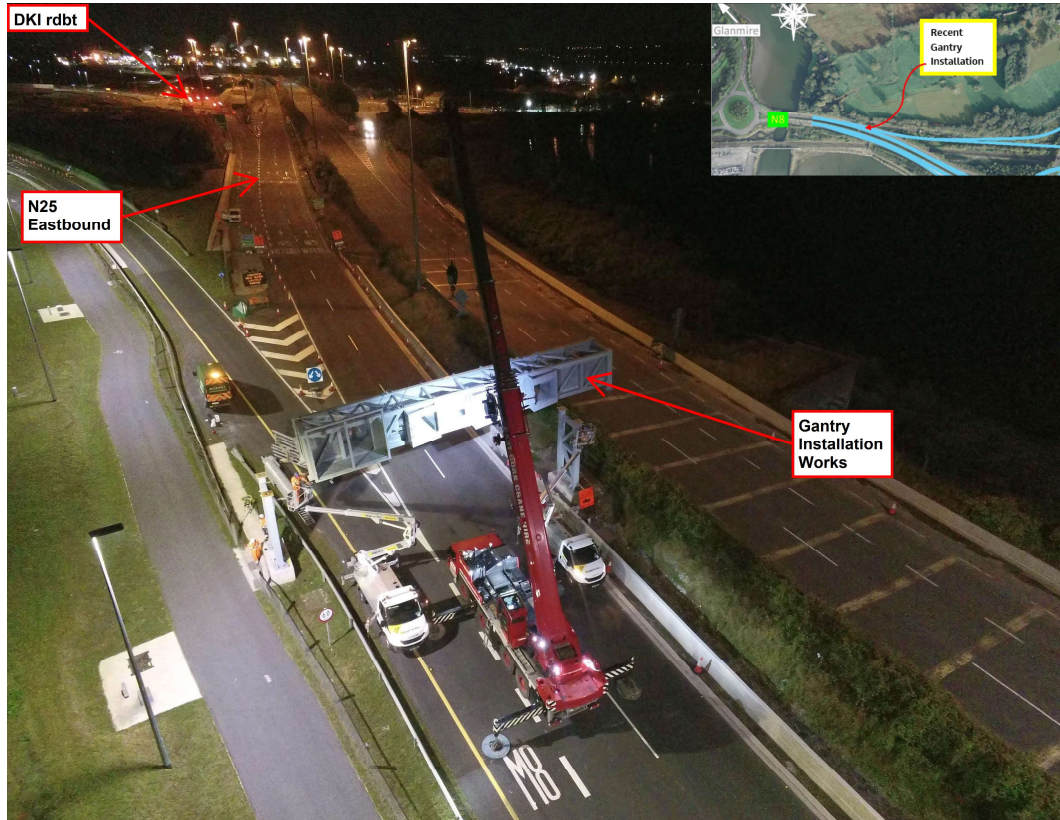
- In addition to the online surfacing works on the N40, offline surfacing works will be progressed in the Link A/E areas in the coming period – see photograph below.





**Upcoming surfacing works location at Link A/E.**

- In order to progress the upgrade of the existing central median safety barriers, the N25 eastbound will be closed each night from 21:00 to 05:00 from Tuesday 20th to Thursday 22nd September 2022. Traffic will be diverted from the Dunkettle Interchange Roundabout through Little Island via the slip road to the R623.
- The installation of structural steel gantries for advance directional signage was also undertaken under night time working during the recent period – see photograph below



Gantry installation on the N25 eastbound under night time working.

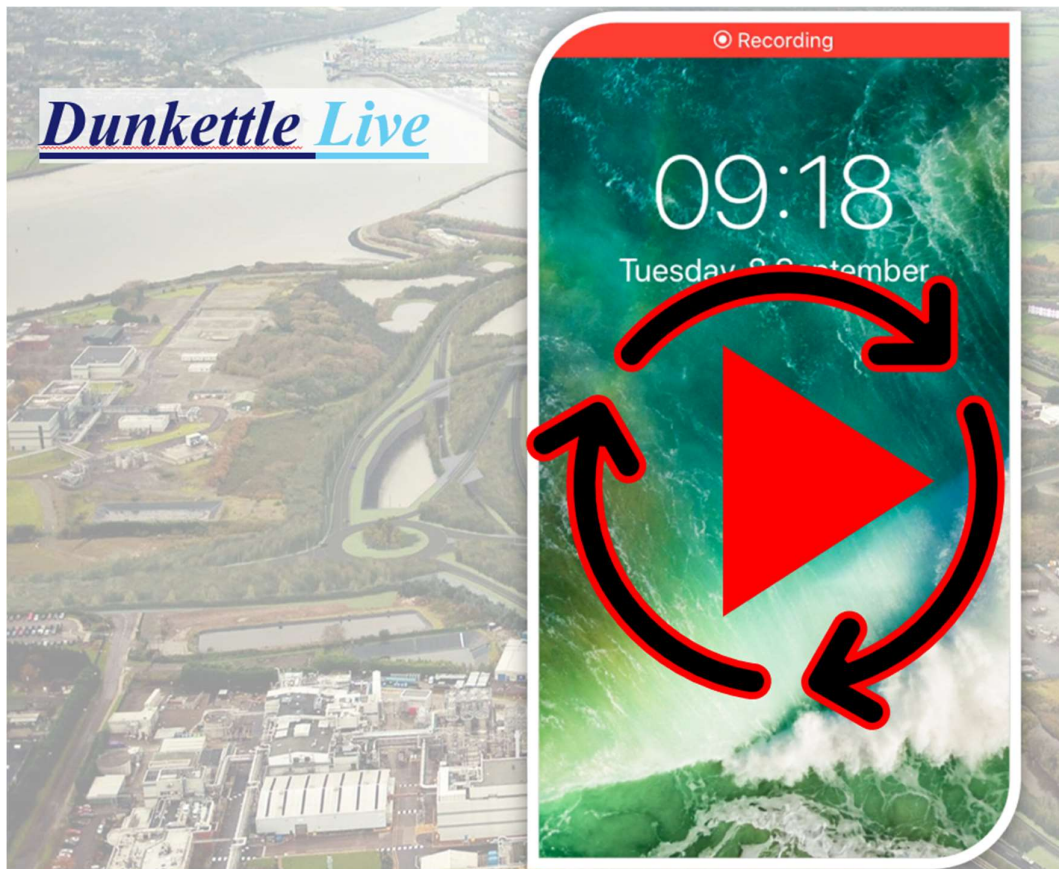
- Overall, motorists will notice an increased focus on surfacing works over the coming weeks and we hope to open further road links to traffic before the end of 2022 – details to follow in future updates.

This weeks video shows the ongoing works in the vicinity of the Dunkettle Interchange Roundabout.





# Dunkettle Live Traffic App



Click on the icon above to see the benefits of the Dunkettle Live App.



Dunkettle Live App: Download from [Apple App store](#) or from [Google Play store](#)

---

As always, if there are any queries or comments in relation to these works, please contact us at:  
**Phone:** 1800 810077 (at any time), **Email:** [roadconstruction@ccc-site.com](mailto:roadconstruction@ccc-site.com).



Further information on the Dunkettle Scheme can be accessed [www.dunkettle.ie](http://www.dunkettle.ie).

Real time traffic information can be accessed via [www.dunkettletraffic.ie](http://www.dunkettletraffic.ie) or on the Dunkettle Live App ([Apple App store](#) and [Google Play store](#)).

New subscribers to the newsletter can register: [www.dunkettle.ie/newslettersignup](http://www.dunkettle.ie/newslettersignup)



[More at www.Dunkettle.ie](http://www.Dunkettle.ie)



---

Your email address is on a list that we use to keep you informed on the progress on the N40 and Dunkettle Interchange works.

Want to change how you receive these emails?

You can [update your preferences](#) or [unsubscribe from this list](#).

---