

Dunkettle Progress Update

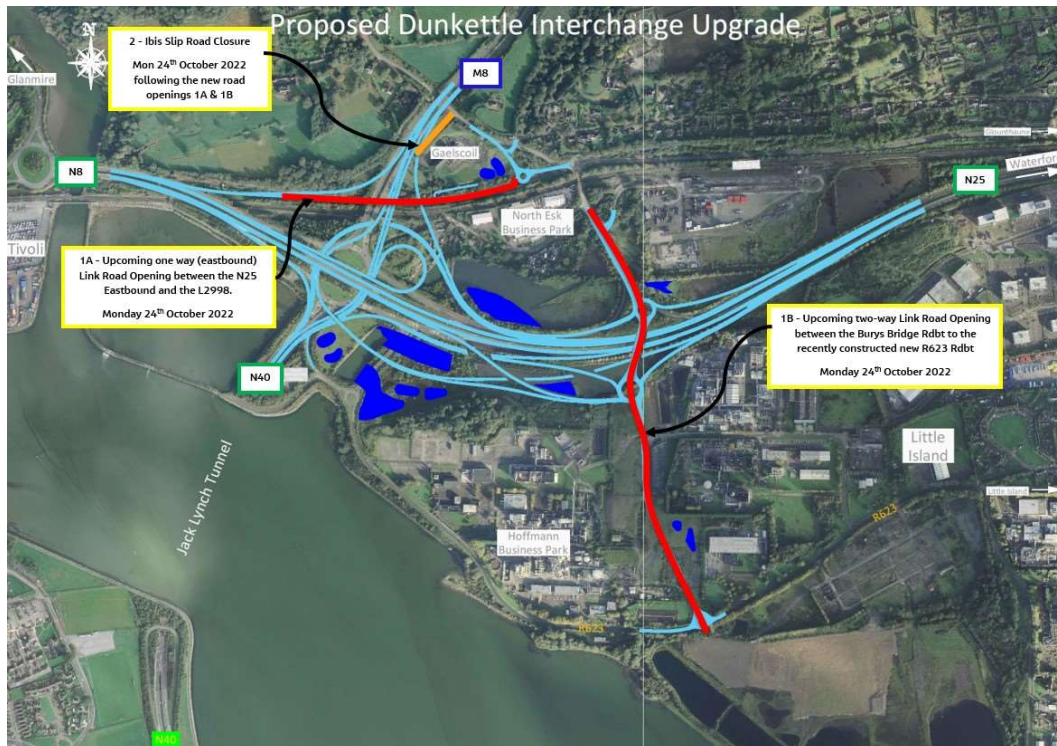
21st October 2022



Twitter

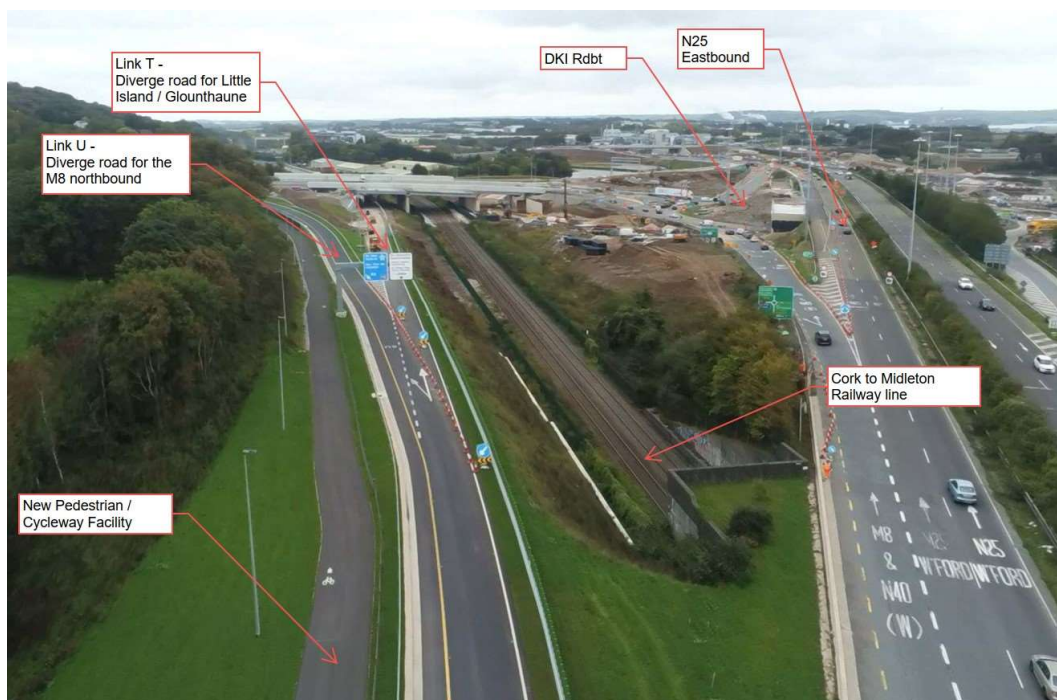


Website

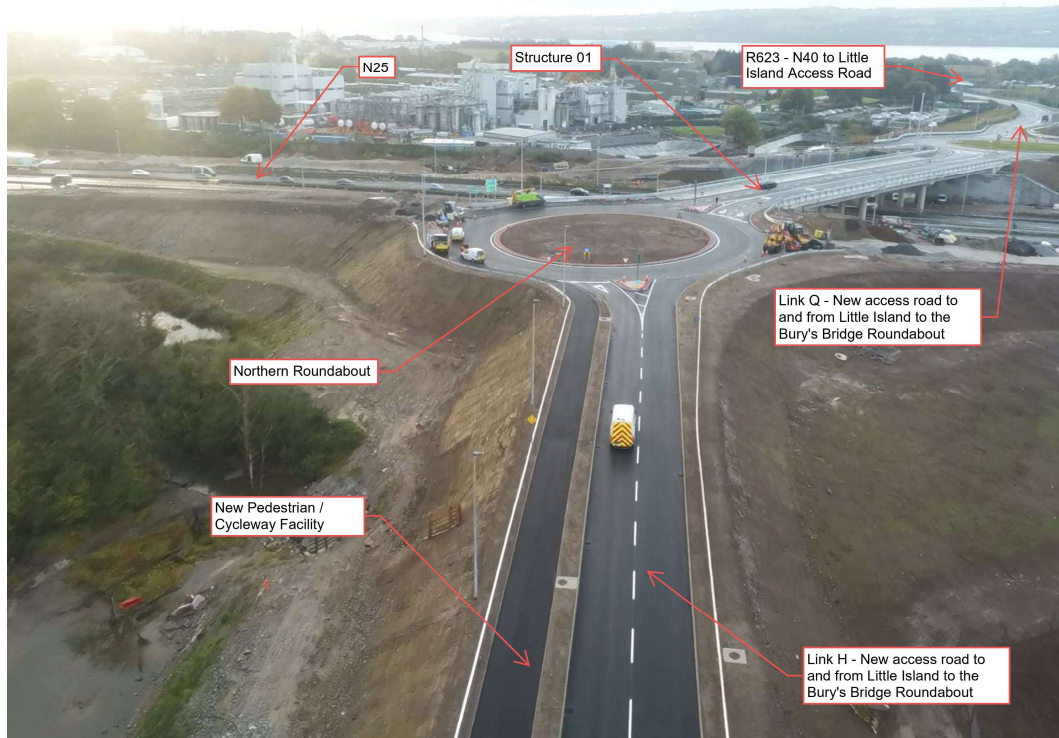


- Motorists are again reminded that speed control measures will be in place across the site on a continuous basis over the coming weeks

- We intend to open Link T1, Link H and Link Q to traffic after rush hour on Monday 24th of October 2022. Current weather conditions may necessitate a delay to this timescale - we will issue an additional update on Monday morning. These links are highlighted in red on the layout plan above.
- Link T1 will facilitate access to the Dunkettle local road network from the N8 eastbound via a one way (eastbound) free-flow slip road catering for traffic approaching from the Tivoli Roundabout area wishing to head to Little Island or to Glounthaune – see photograph below.
- Link H/Structure 01/Link Q highlighted on the plan will facilitate two-way access over the N25 between the Bury's Bridge Roundabout on the Glanmire – Glounthaune road and the recently constructed roundabout on the R623 Regional road through Little Island – see photograph below.

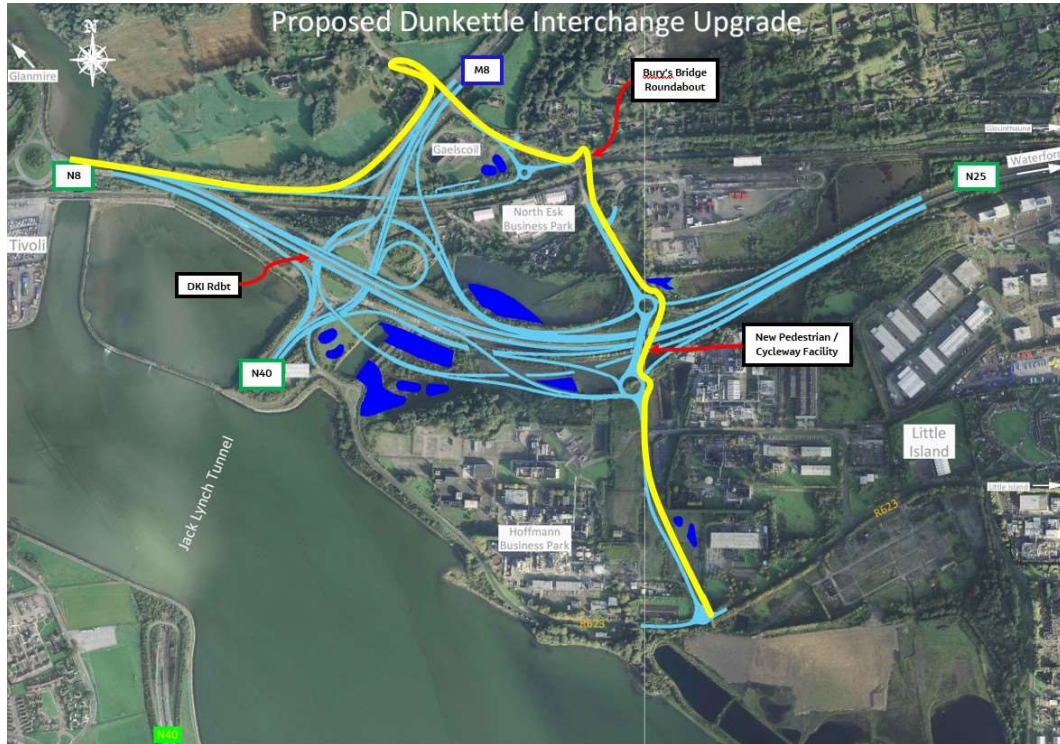


Link T one-way diverge to Little Island/Glounthaune from the N25 eastbound which will open Monday 24/10/22.

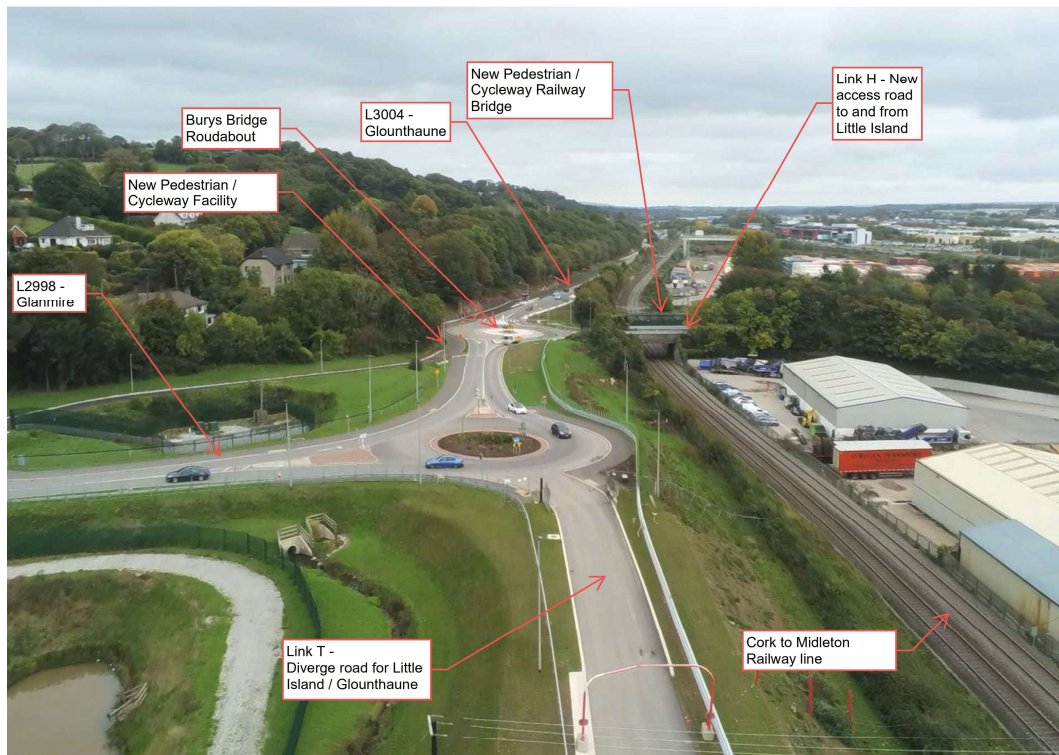


Link H two-way link road between Bury's Bridge and Little Island - opening Monday 24/10/22.

- The cycleway linking the Dunkettle Roundabout to the Little Island area will open in its entirety in parallel to the link road openings including the dedicated cycle/pedestrian railway bridge. This cycleway is shown coloured yellow on the layout plan below – see photograph below also.



The new pedestrian/cycleway facility between the Tivoli Roundabout and Little Island.



New pedestrian/cycleway facility at the Bury's Bridge Roundabout area.

- Following on immediately from the opening of the new route over the N25, the “Ibis slip road” onto the M8 from the Dunkettle local road network will close. This will facilitate the completion of the outstanding works on Link E (the new free flow slip road from the M8 to the N25 eastbound). The M8 southbound will then be restored to 2 lanes during November 2022 - exact date will be confirmed in advance. Traffic which previously used the Ibis Slip-road will be diverted over the N25 via the new bridge and along the R623 Regional Road as far as the Dunkettle Interchange Roundabout – see diversion route hereunder. This is an interim arrangement and will be replaced by further road link openings over the coming period.

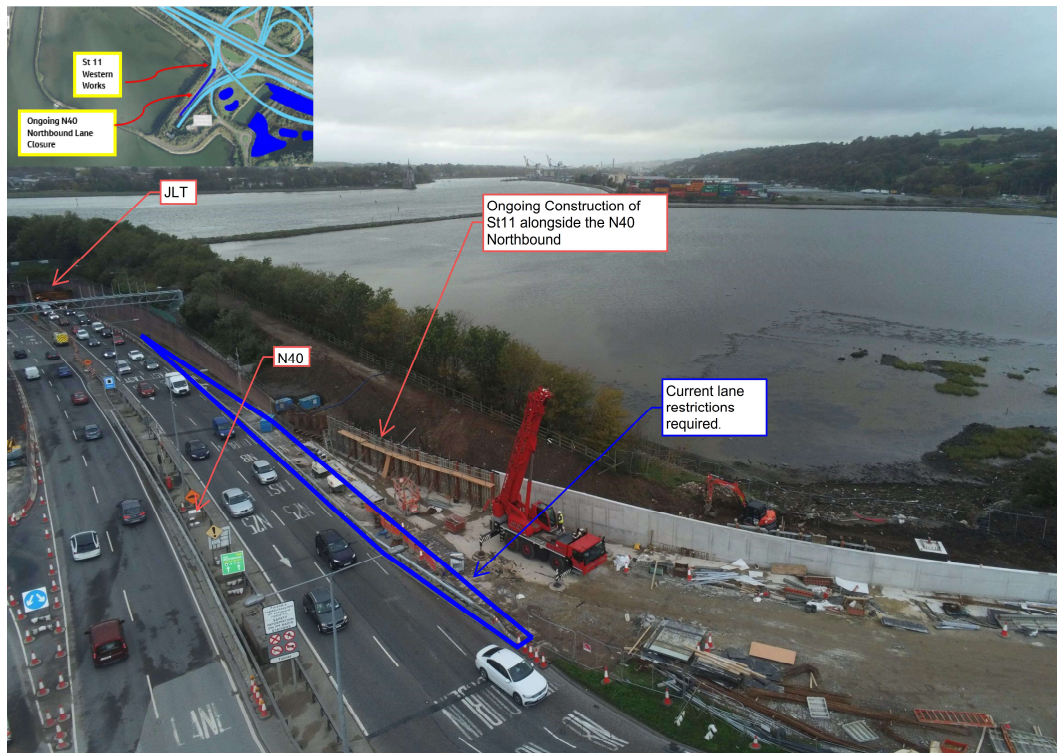


The diversion route for traffic accessing the Dunkettle Interchange from the L2998/L3004 Bury's Bridge area following the closure of the Ibis slip road.

- Traffic Management measures remain in place on the northbound lanes between the Jack Lynch Tunnel and the Interchange Roundabout. These are required to facilitate completion of the tie in of the new Structure St11 retaining wall at this location – see photograph below. We hope to further reduce the extent of lane restrictions during W/C Monday 24th of October 2022. We expect that the Traffic Management measures associated with the retaining wall at this location will then be fully removed in November 2022.

- All target dates set out in these updates will remain under continuous review, given that scheduling of works is obviously dependent on a

number of factors including weather conditions. Updated dates for the various link openings and Traffic Management measures will continue to be issued in advance as appropriate.

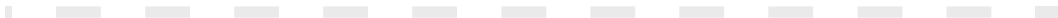
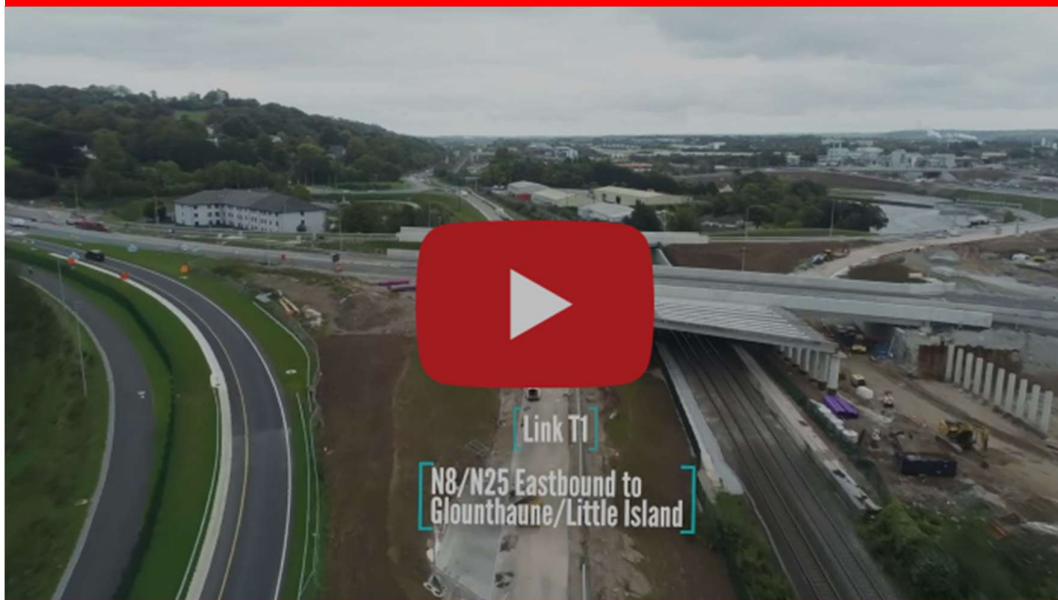


Works ongoing at St11 alongside the N40 northbound.

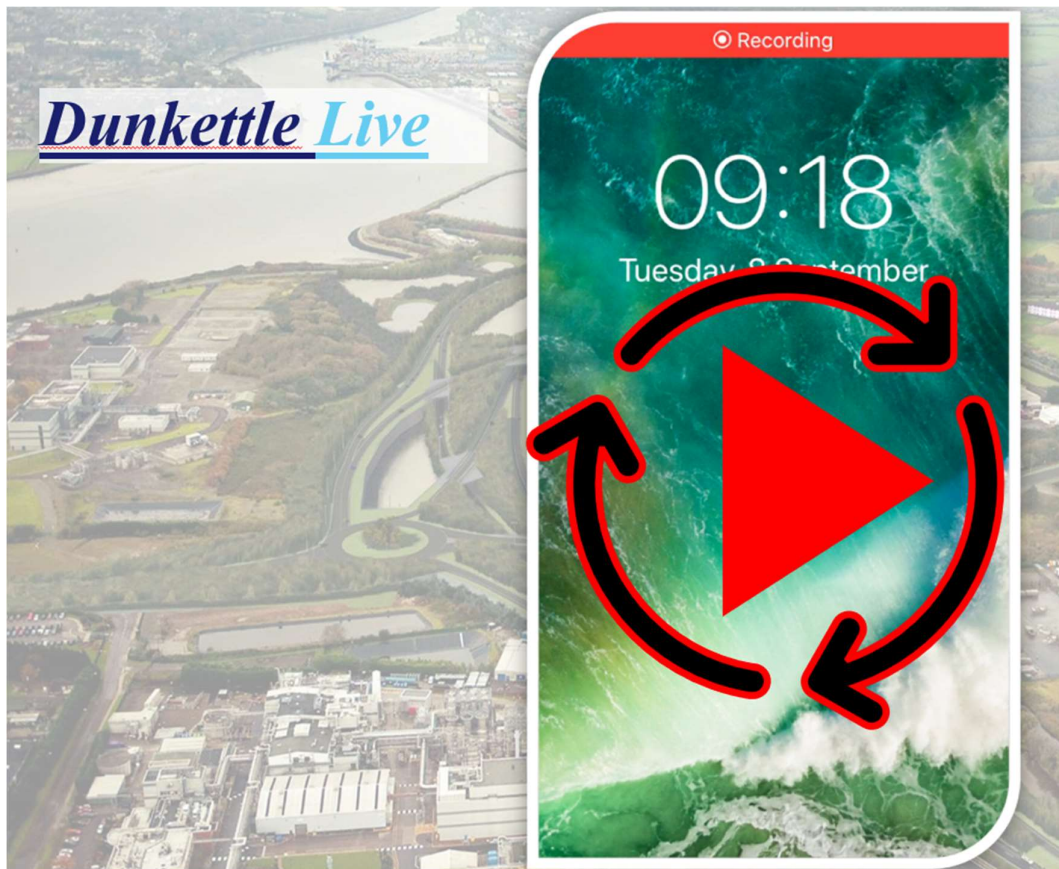
- Motorists are requested to take particular care over the coming months while layout changes are implemented including the opening of Links T1, H and Q. The construction focus overall will continue to be on online areas and areas immediately adjacent to existing traffic lanes.

- In terms of the overall construction programme, The Dunkettle works remain well on track for completion by the due date of February 2024.

This week's Progress Update shows the new route for traffic heading on N8 Eastbound to the R623 in Little Island. This will open on Monday 24th October 2022.



Dunkettle Live Traffic App



Click on the icon above to see the benefits of the Dunkettle Live App.



Dunkettle Live App: Download from [Apple App store](#) or from [Google Play store](#)

As always, if there are any queries or comments in relation to these works, please contact us at:

Phone: 1800 810077 (at any time), **Email:** roadconstruction@ccc-site.com.



Further information on the Dunkettle Scheme can be accessed www.dunkettle.ie.

Real time traffic information can be accessed via www.dunkettletraffic.ie or on the Dunkettle Live App ([Apple App store](#) and [Google Play store](#)).

New subscribers to the newsletter can register: www.dunkettle.ie/newslettersignup



[More at www.Dunkettle.ie](http://www.Dunkettle.ie)



Your email address is on a list that we use to keep you informed on the progress on the N40 and Dunkettle Interchange works.

Want to change how you receive these emails?

You can [update your preferences](#) or [unsubscribe from this list](#).
