

Dunkettle Progress Update

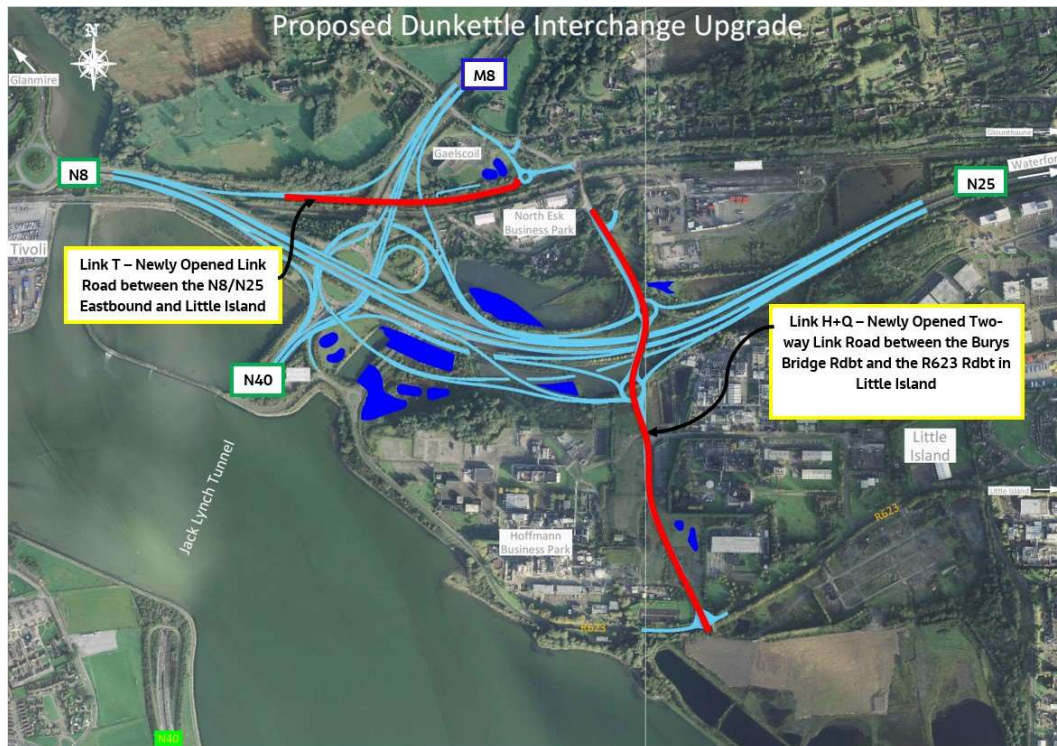
28th October 2022



Twitter

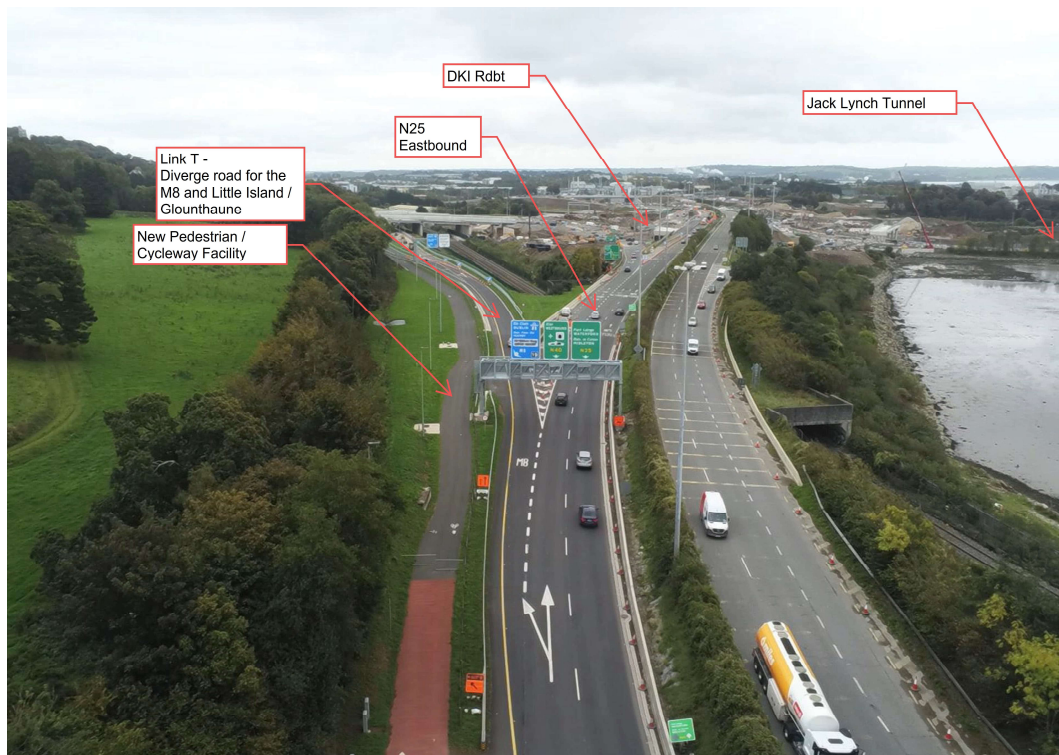


Website



- Motorists are again reminded that speed control measures will be in place across the site on a continuous basis over the coming weeks

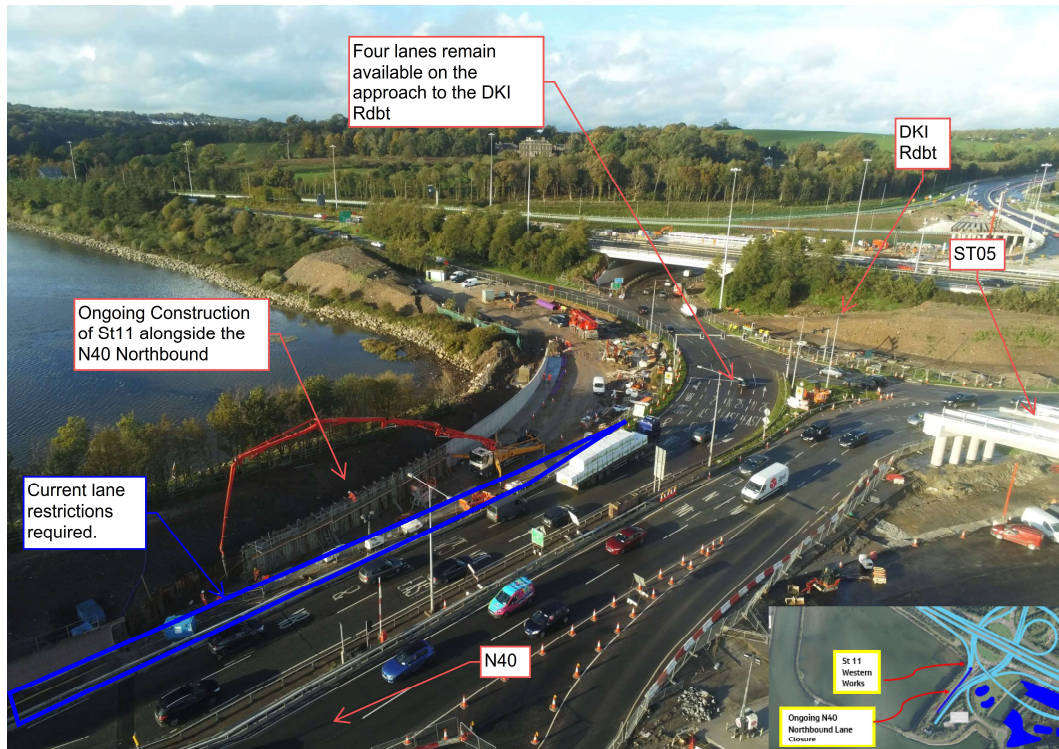
- Link T1, Link H & Link Q were opened to traffic on Monday 24th of October 2022 - see layout plan above with these links highlighted. The new diverge point from the N8 eastbound for Little Island is highlighted on the photo below also (if you wish to see these in larger scale please visit the Dunkettle website <https://www.dunkettle.ie/news>). The traffic light sequence at the Dunkettle Interchange Roundabout has been fine-tuned over the last few days to best suit the new layout.



New diverge point from the N8 eastbound to Little Island.

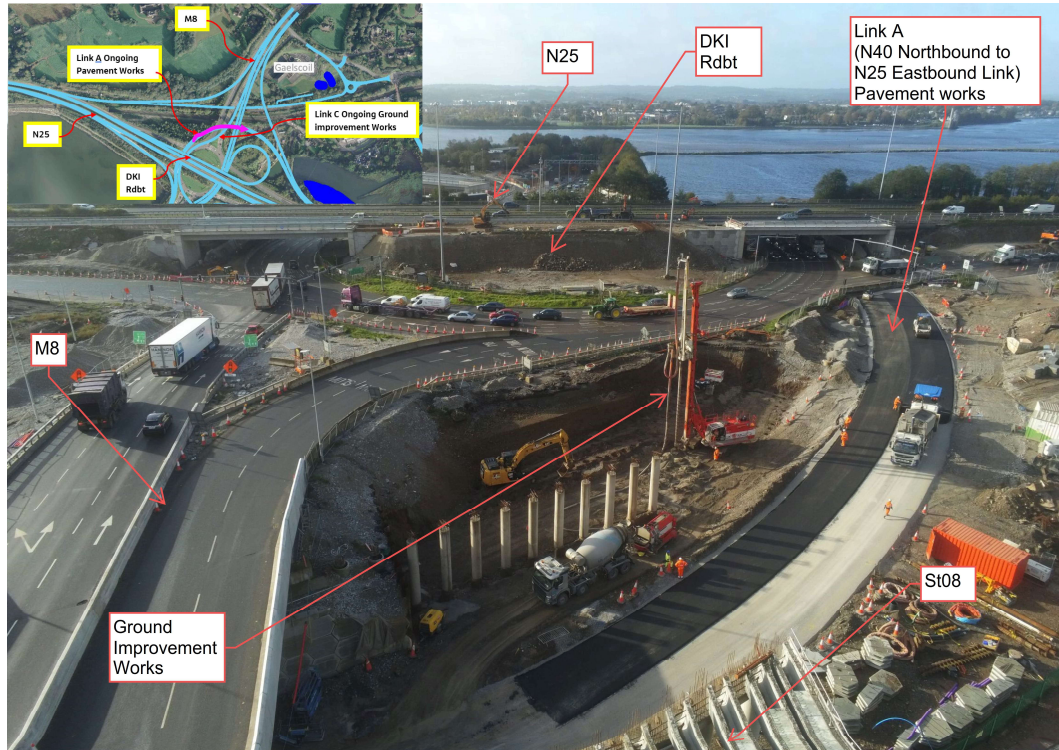
- The works adjacent to the N40 northbound between the Jack Lynch Tunnel & Dunkettle Interchange Roundabout will continue for a number of weeks. We hope to shorten the length of the lane restriction in this area today, Friday 28/10/2022. The length of the

lane restriction will be further reduced during W/C Monday 31/10/22 and we hope to have the entire lane fully operational again during W/C 07/11/2022. Motorists are requested to use the 4 lanes on the approach to the roundabout - see photograph below.



Works ongoing adjacent to the N40 northbound between the Jack Lynch Tunnel & Dunkettle Interchange Roundabout.

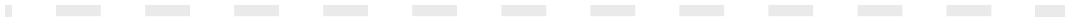
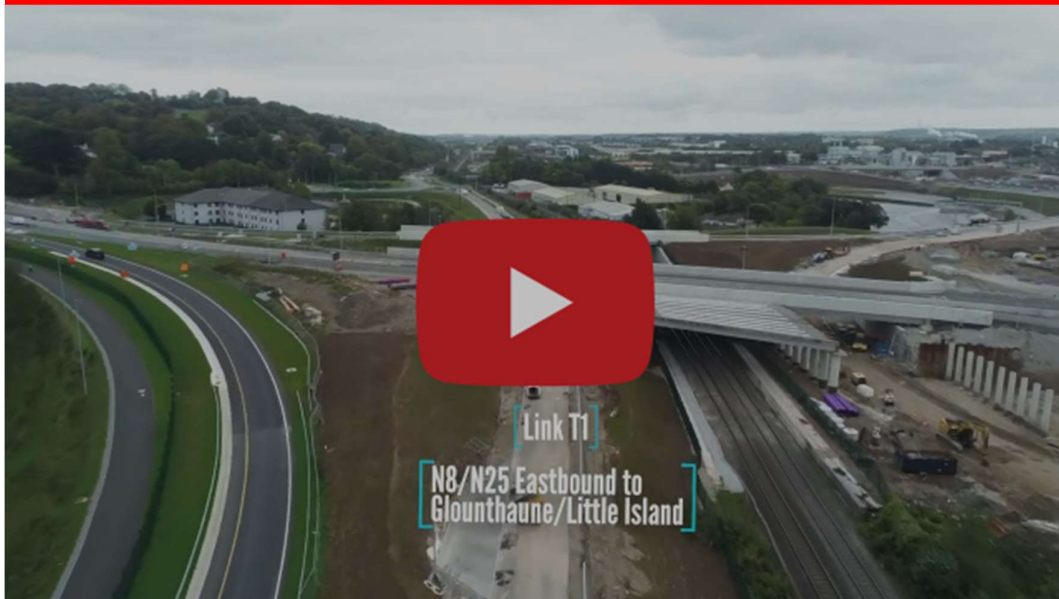
- Over the coming weeks, we hope to bring a number of the new links into use. The photograph below shows works ongoing on a section of what will ultimately become Link A - the link from the N40 northbound to the N25 eastbound. Further details in relation to the upcoming openings will be provided in next week's update.



Pavement and ground improvement works ongoing at Link A which will connect the N40 northbound to the N25 eastbound.

- Motorists are again advised to take care over the coming period as a number of layout changes will be implemented between now and Christmas.

**This week's Progress Update shows the new route for traffic heading
from the N8 Eastbound to the R623 in Little Island**



Dunkettle Live Traffic App



Click on the icon above to see the benefits of the Dunkettle Live App.



Dunkettle Live App: Download from [Apple App store](#) or from [Google Play store](#)

As always, if there are any queries or comments in relation to these works, please contact us at:

Phone: 1800 810077 (at any time), **Email:** roadconstruction@ccc-site.com.



Further information on the Dunkettle Scheme can be accessed www.dunkettle.ie.

Real time traffic information can be accessed via www.dunkettletraffic.ie or on the Dunkettle Live App ([Apple App store](#) and [Google Play store](#)).

New subscribers to the newsletter can register: www.dunkettle.ie/newslettersignup



[More at www.Dunkettle.ie](http://www.Dunkettle.ie)



Your email address is on a list that we use to keep you informed on the progress on the N40 and Dunkettle Interchange works.

Want to change how you receive these emails?

You can [update your preferences](#) or [unsubscribe from this list](#).
