

Dunkettle Progress Update

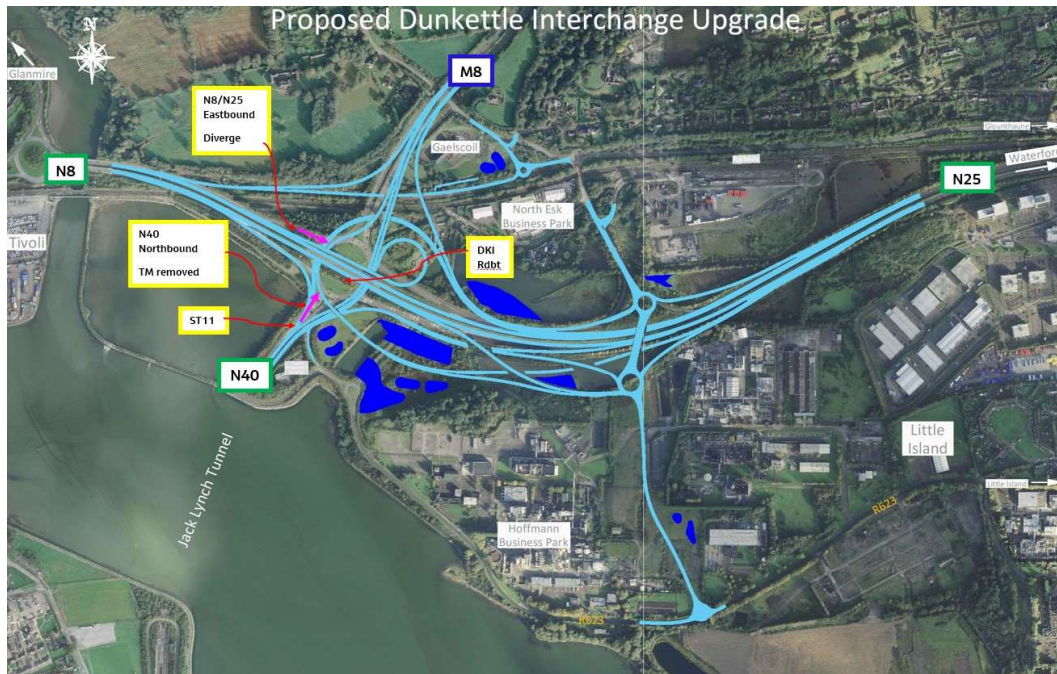
11th November 2022



Twitter

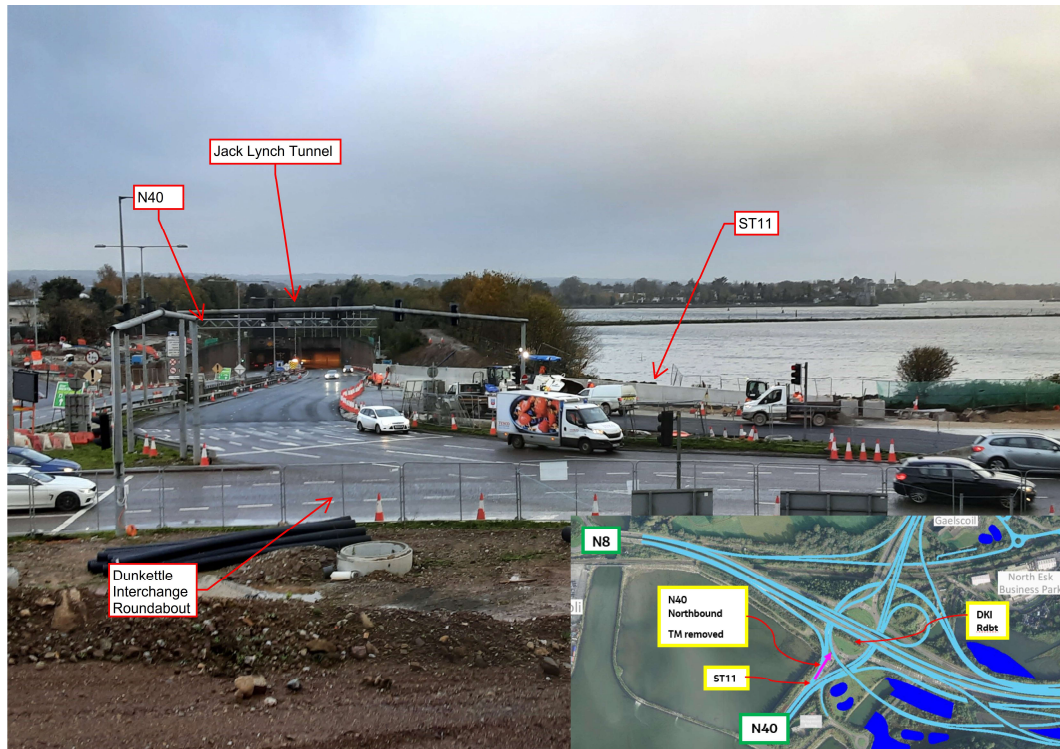


Website



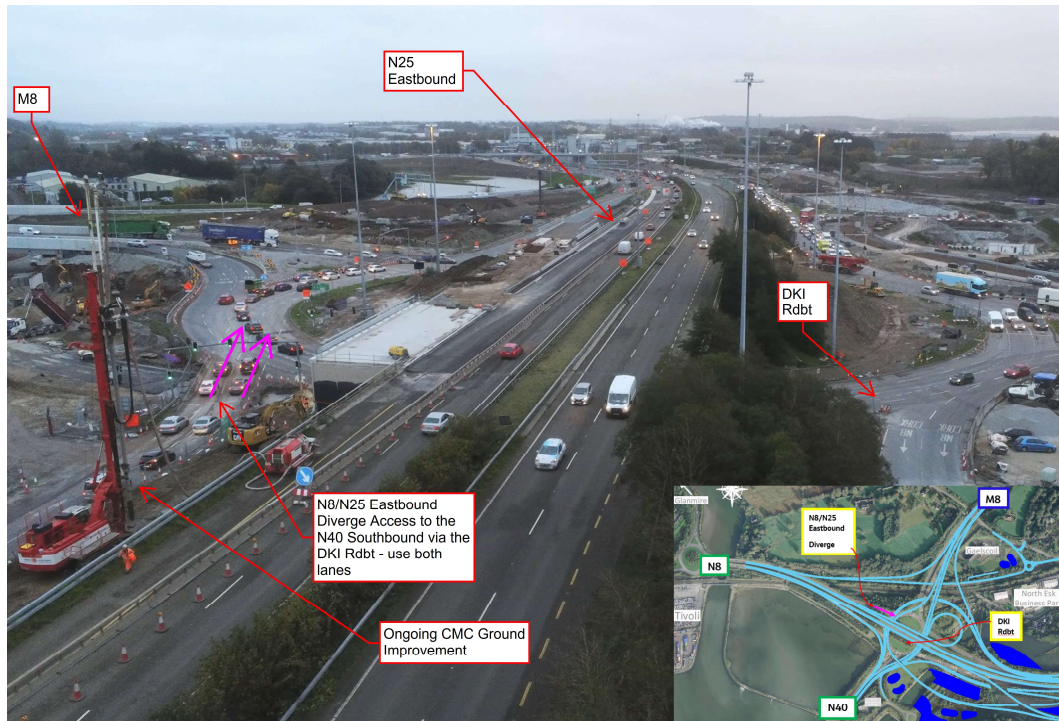
- Motorists are again reminded that speed control measures will be in place across the site on a continuous basis over the coming weeks

- The temporary traffic management lane closure on the N40 northbound between the Jack Lynch Tunnel and the Interchange Roundabout is almost entirely removed and will not be in place at peak times going forward – see photograph below.



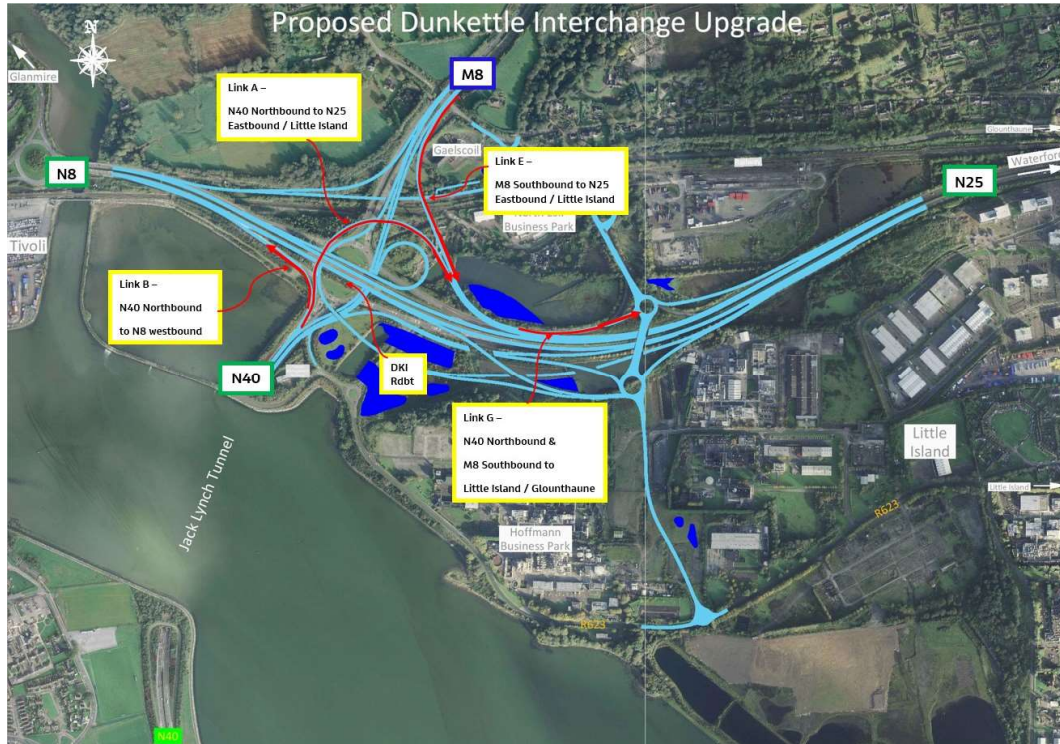
Works ongoing adjacent to the N40 northbound between the Jack Lynch Tunnel & Dunkettle Interchange Roundabout.

- The N8/N25 eastbound diverge to the Interchange Roundabout is operating on a two-lane basis with both lanes facilitating access to the Jack Lynch Tunnel. CMC piling works are being progressed alongside the diverge for Link F which will ultimately provide the free flow link between the N8/N25 eastbound and the Jack Lynch Tunnel – see photograph below.



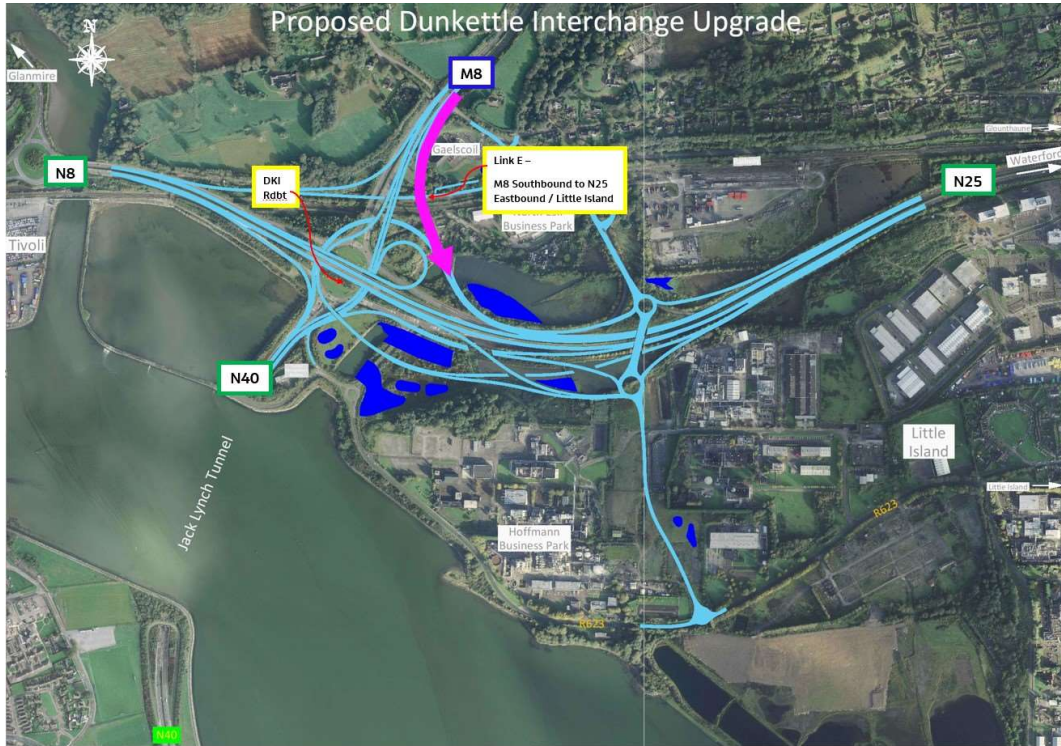
The N8/N25 eastbound diverge to the Interchange Roundabout.

- We hope to open a number of further road Links on the Dunkettle Interchange Project before the end of this month. The Links scheduled to open are shown coloured red on the layout plan hereunder and are summarised as follows:-

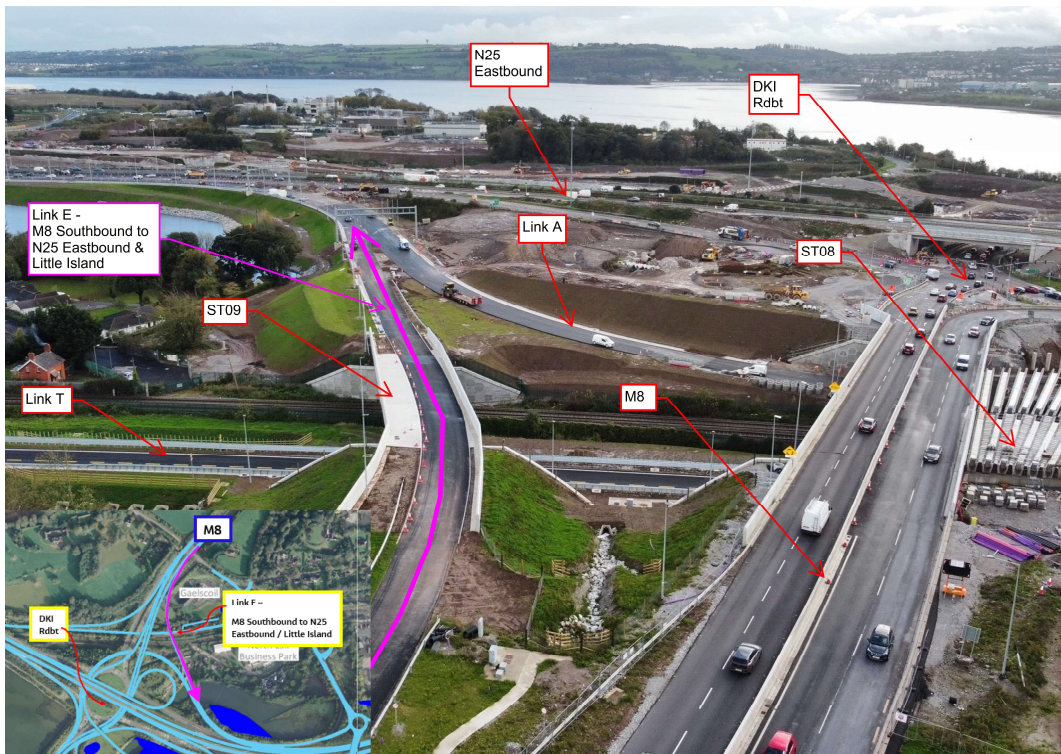


Links A, B, E and G scheduled to open before the end of November.

- Link E will provide a free-flow Link for Southbound traffic on the M8 wishing to head east on the N25 or wishing to access Little Island – see layout plan and aerial photo below.

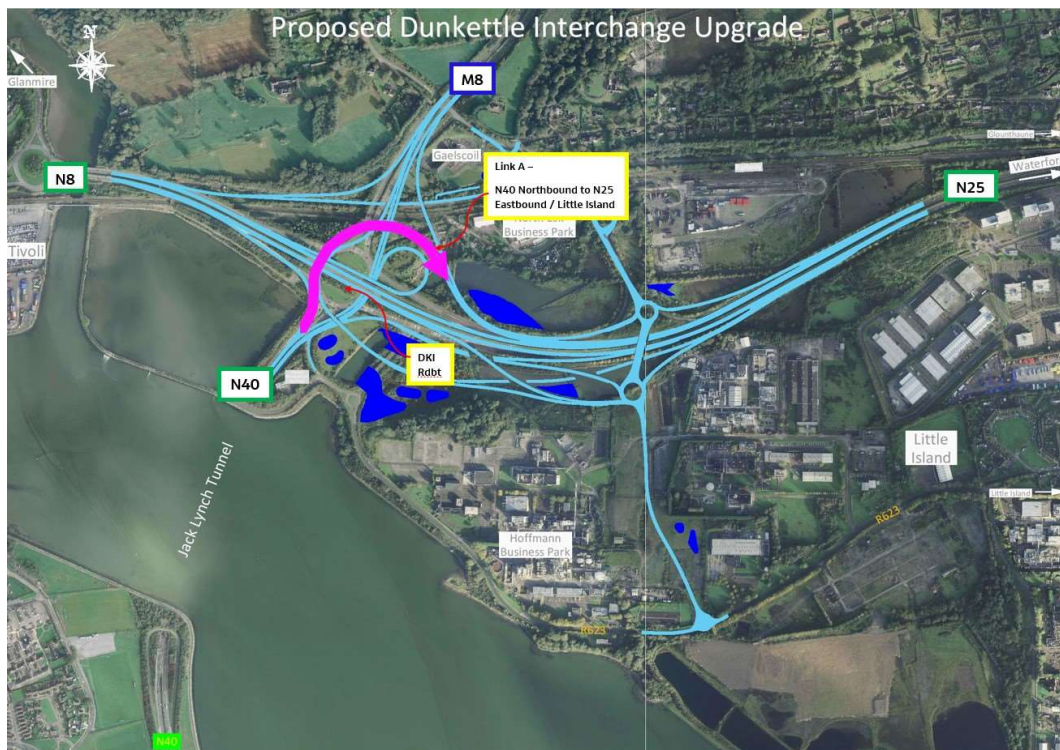


Link E - M8 Southbound to N25 Eastbound / Little Island.

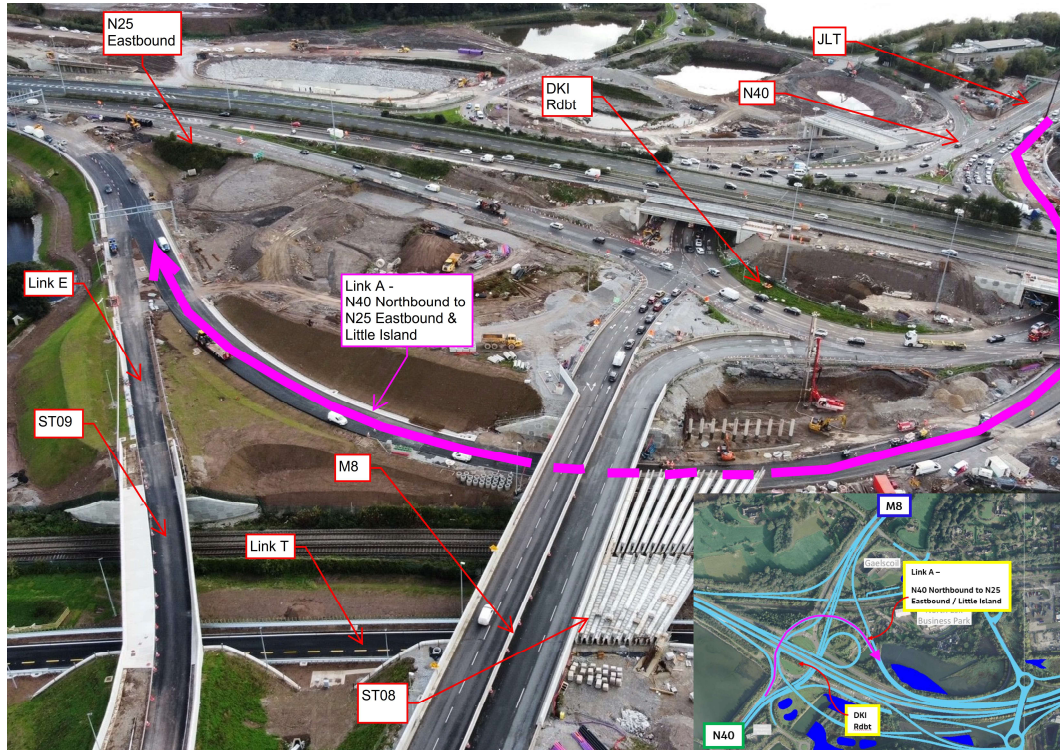


Link E - M8 Southbound to N25 Eastbound / Little Island.

- Link A will provide a new route for traffic heading north through the Jack Lynch Tunnel and wishing to access either Little Island or the N25 Eastbound. This is a significant alignment change and traffic wishing to utilise Link A to head east or to Little Island will need to utilise the left-hand lane of the Jack Lynch Tunnel – see layout plan and aerial photo below.



Link A - N40 Northbound to N25 Eastbound / Little Island.

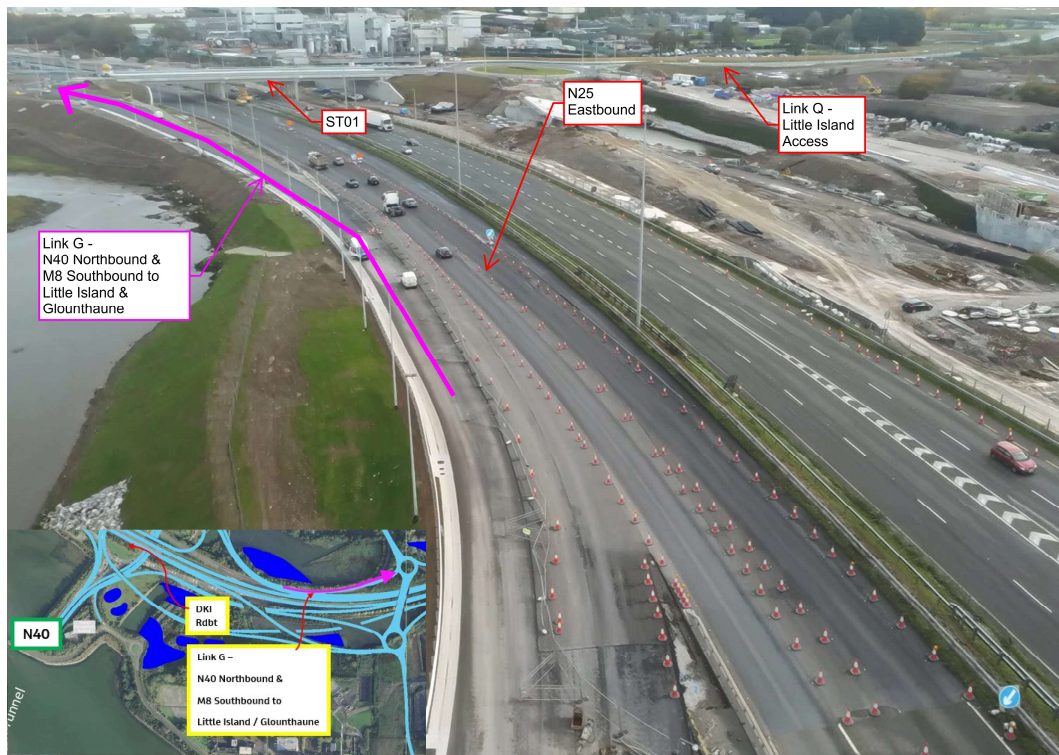


Link A - N40 Northbound to N25 Eastbound / Little Island.

- Traffic on both Link E and Link A will have the option of merging onto the N25 Eastbound or proceeding, via Link G, to the northern roundabout of the new Eastern Interchange if they wish to access Little Island.
- Link G will facilitate Link A/E traffic wishing to access Little Island as shown – see layout plan and aerial photo below.

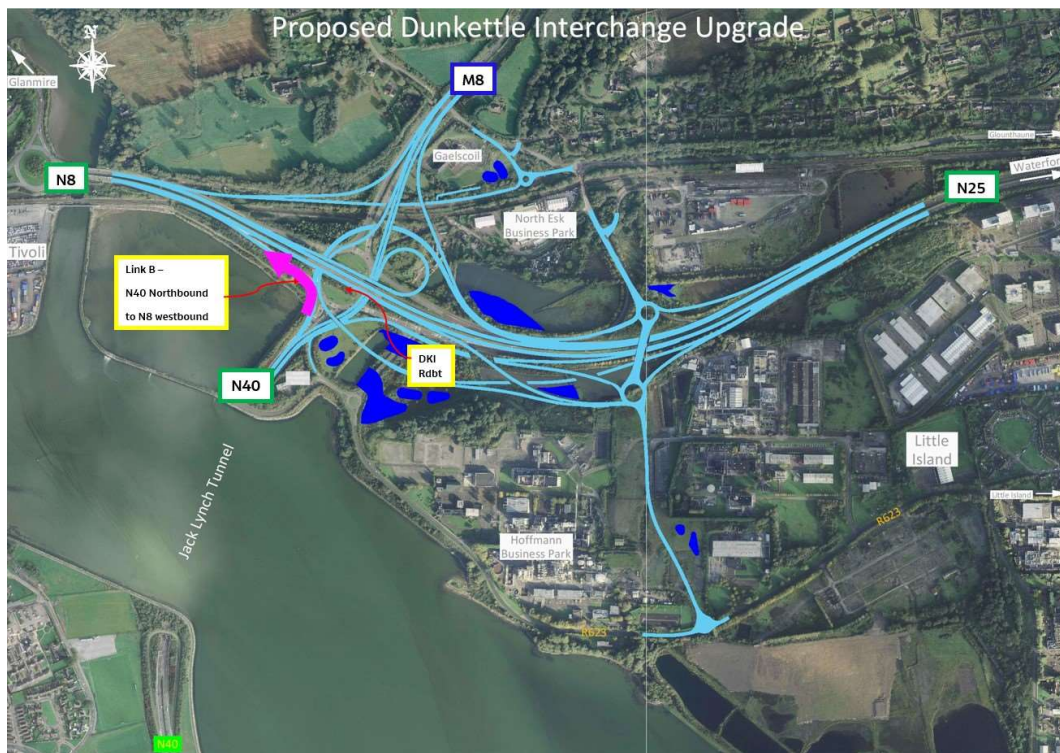


Link G - N40 Northbound & M8 Southbound to Little Island & Glounthaune.

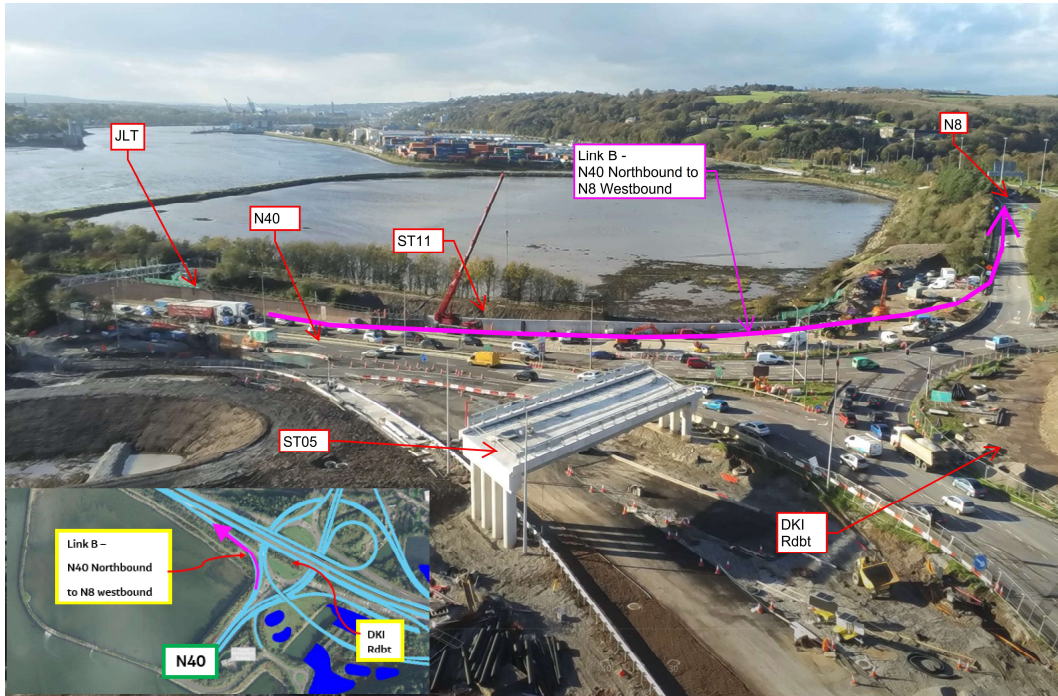


Link G - N40 Northbound & M8 Southbound to Little Island & Glounthaune.

- Link B will ultimately provide a free-flow Link for traffic exiting the Jack Lynch Tunnel in a Northbound direction and wishing to head west towards Cork City centre. In the short-term, pending removal of the traffic lights on the Northbound exit from the Jack Lynch Tunnel, Link B will facilitate this movement for vehicles close to the traffic lights - see layout plan and aerial photo below.



Link B - N40 Northbound to N8 Westbound.

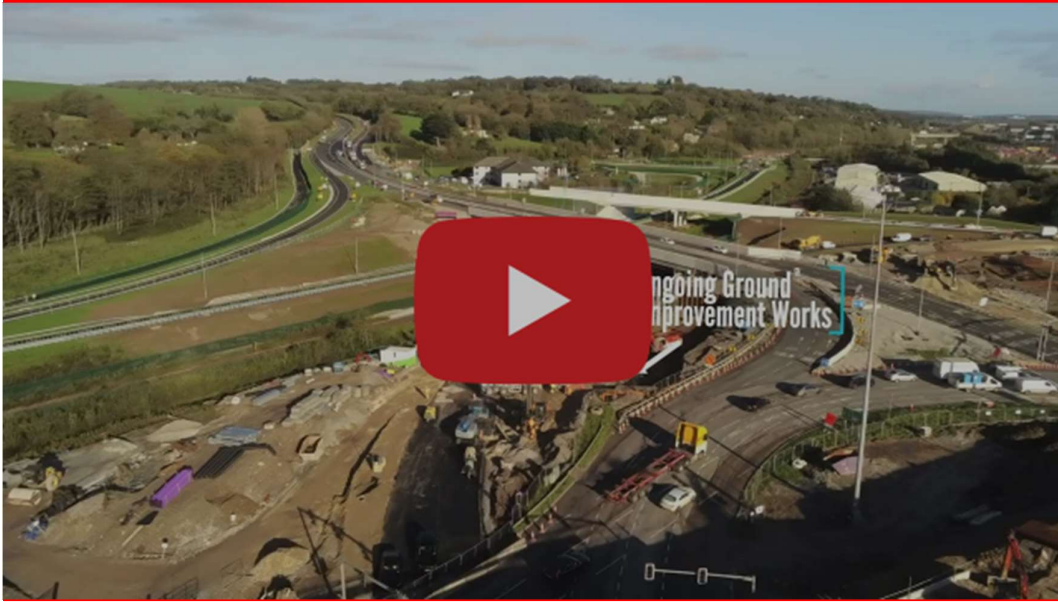


Link B - N40 Northbound to N8 Westbound.

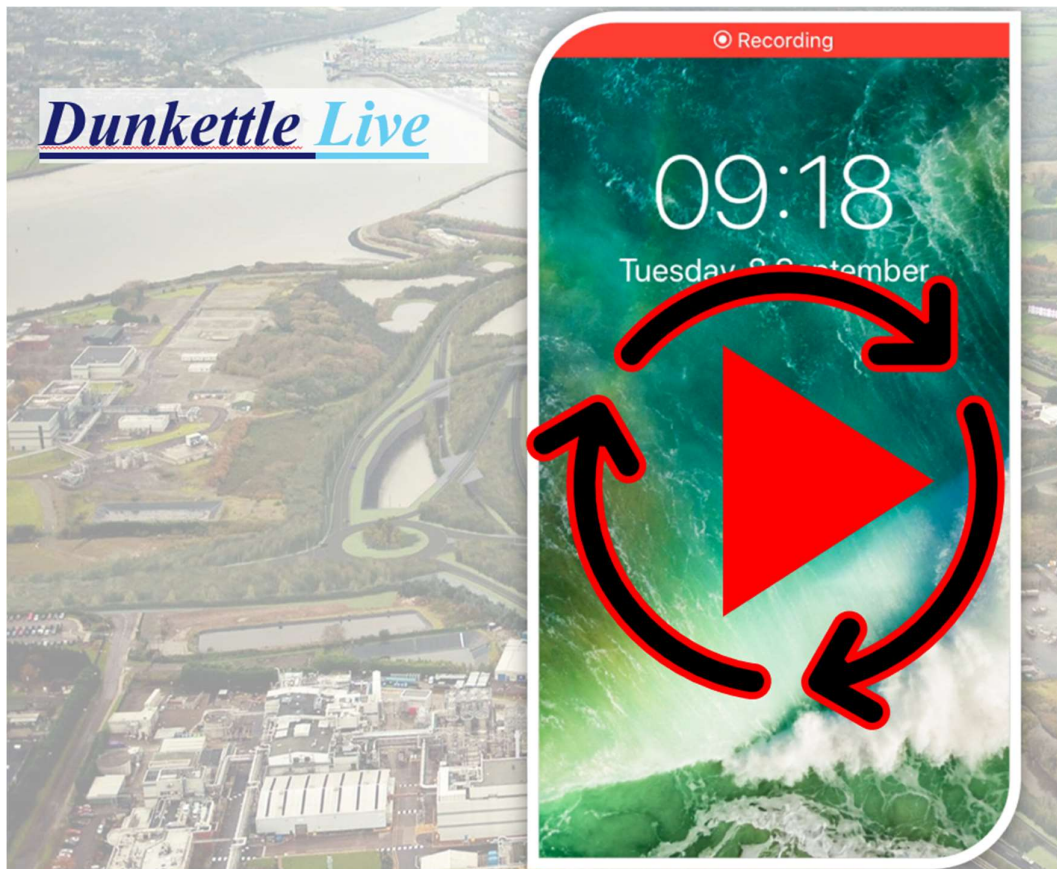
- Weather conditions prevent us from establishing a date and time for the opening of the new Links at this stage but precise details will be provided via the various communication channels well in advance. We intend to issue a further update, in this regard, in the middle of week commencing 14/11/2022.

- Explanatory videos, layout plans and further aerial photos illustrating the new alignments for Links A, B, E and G will be included in the next update. However, if there are any queries or comments in relation to the new arrangements, please contact us using the contact details below.

This weeks video shows the ongoing works in the vicinity of the Dunkettle Interchange Roundabout.



Dunkettle Live Traffic App



Click on the icon above to see the benefits of the Dunkettle Live App.



Dunkettle Live App: Download from [Apple App store](#) or from [Google Play store](#)



As always, if there are any queries or comments in relation to these works, please contact us at:

Phone: 1800 810077 (at any time), **Email:** roadconstruction@ccc-site.com.

Further information on the Dunkettle Scheme can be accessed www.dunkettle.ie.

Real time traffic information can be accessed via www.dunkettletraffic.ie or on the Dunkettle Live App ([Apple App store](#) and [Google Play store](#)).

New subscribers to the newsletter can register: www.dunkettle.ie/newslettersignup



[More at www.Dunkettle.ie](http://www.Dunkettle.ie)



Your email address is on a list that we use to keep you informed on the progress on the N40 and Dunkettle Interchange works.

Want to change how you receive these emails?

You can [update your preferences](#) or [unsubscribe from this list](#).
