

Dunkettle Progress Update

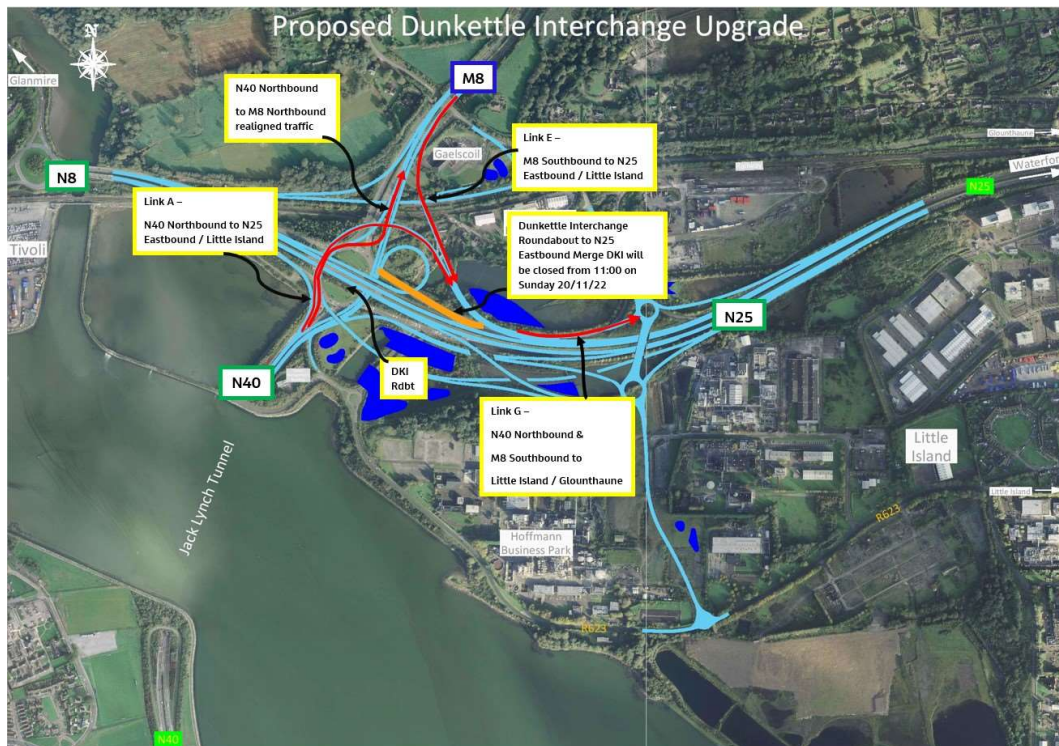
18th November 2022



Twitter

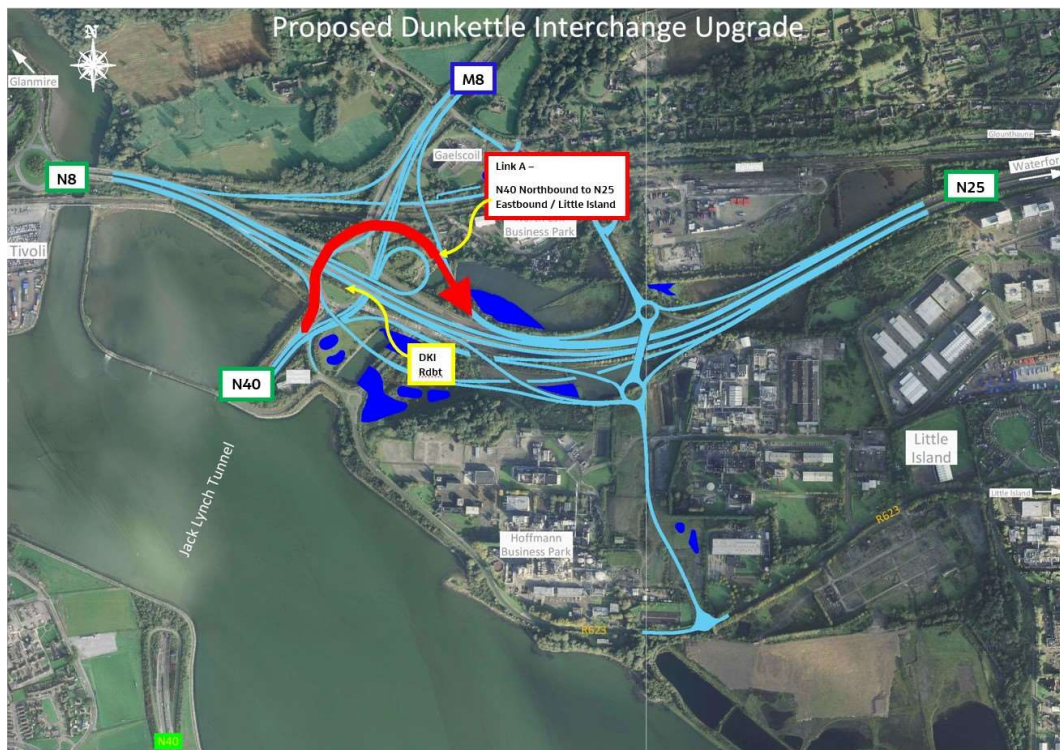


Website

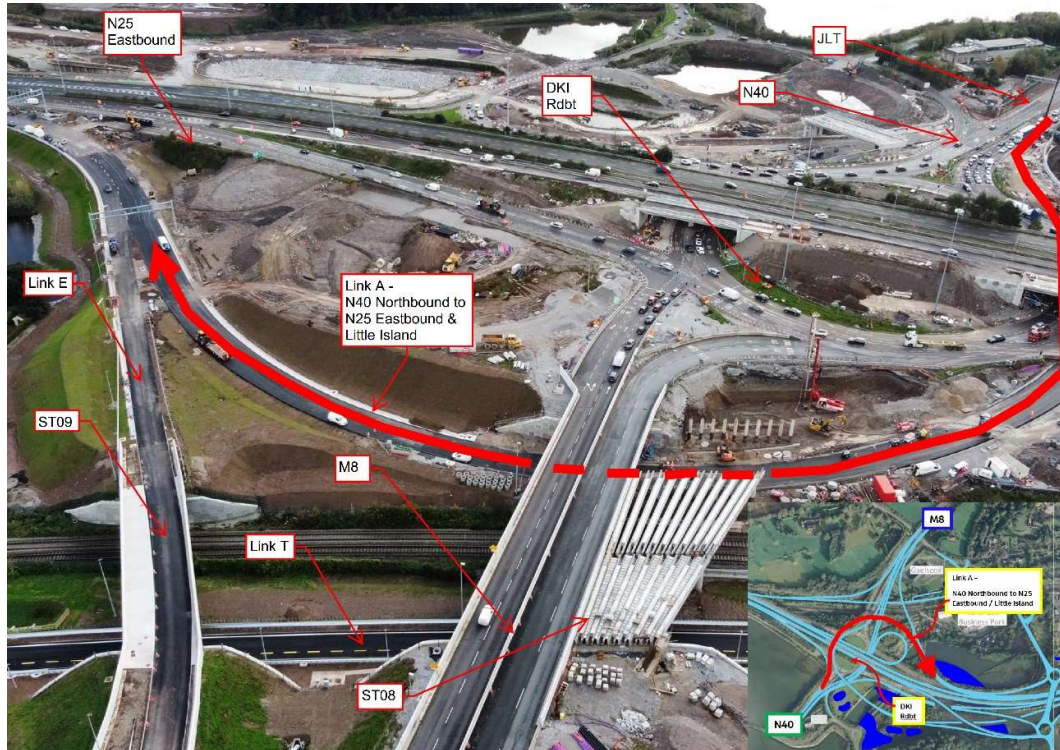


Following on from our weekly update of Friday the 11th November 2022 and our short update of Wednesday the 16th November 2022, we can confirm that we are targeting 11am on Sunday the 20th November 2022 for the opening of 3 new Road Links as follows:-

- Link A will provide a new route for traffic heading north through the Jack Lynch Tunnel and wishing to access either Little Island or the N25 Eastbound. The new route is shown coloured red in the layout plan and aerial photo below. This represents a significant change in alignment and motorists are advised to utilise the left-hand lane of the Jack Lynch Tunnel in order to access the new Link A route.
- Motorists wishing to head north on the M8 should use the right hand lane of the tunnel.

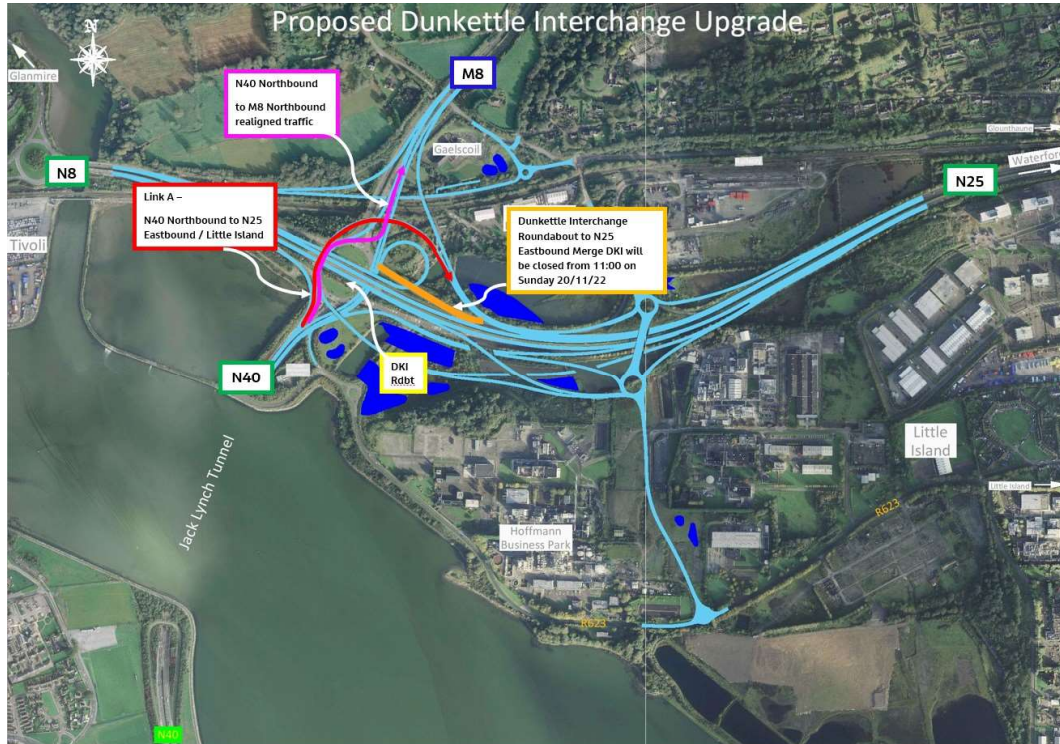


Link A - N40 Northbound to N25 Eastbound / Little Island.

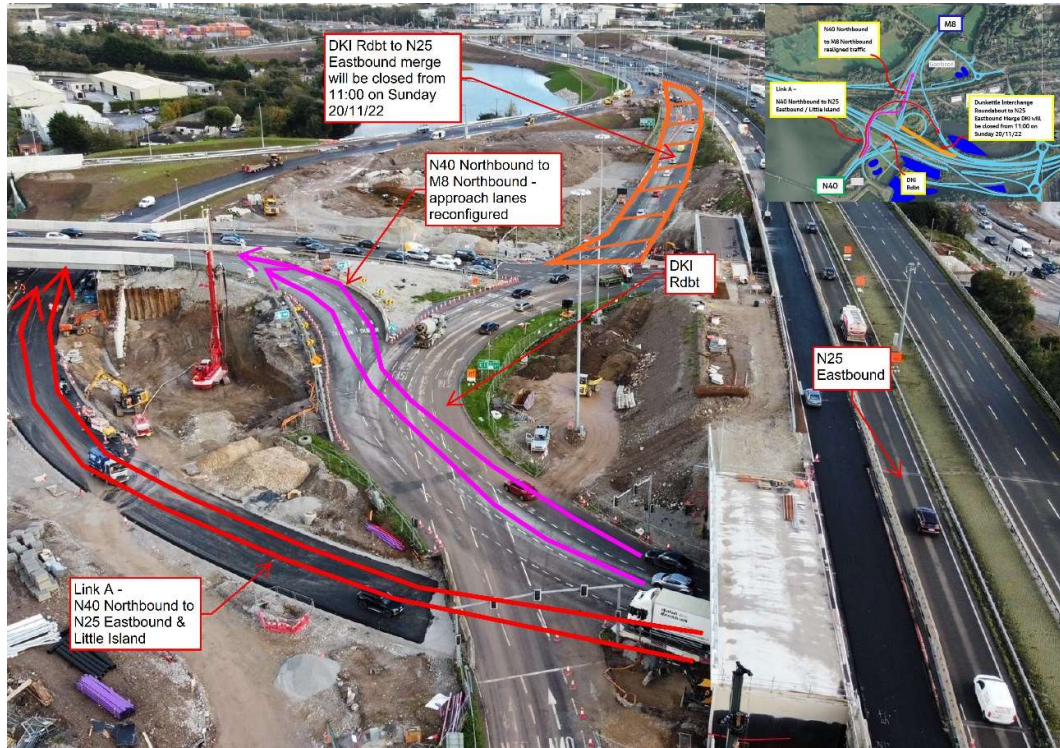


Link A - N40 Northbound to N25 Eastbound / Little Island.

- Opening of Link A will trigger the immediate closure of the N25 Eastbound merge from the Interchange Roundabout – shown coloured orange on the layout plan and aerial photograph below.
- The route for N40 traffic wishing to head north on the M8 is shown in purple on the below plan and aerial photo.

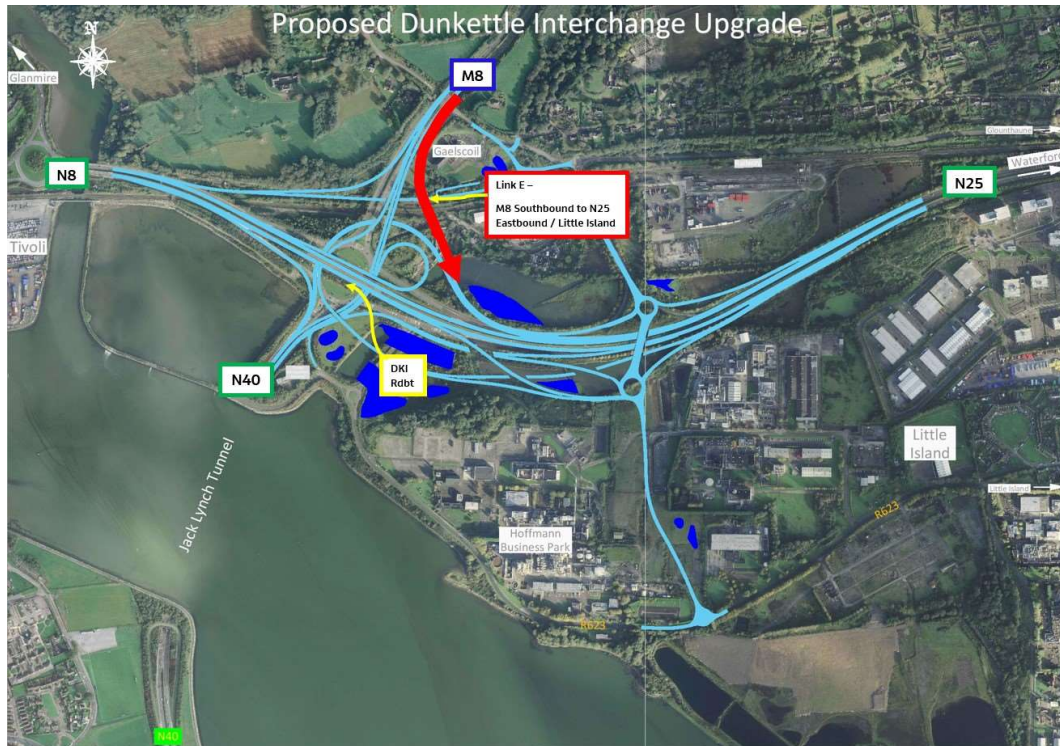


N25 Eastbound merge from the Interchange Roundabout closing on Sunday 20th November 2022 at 11am.

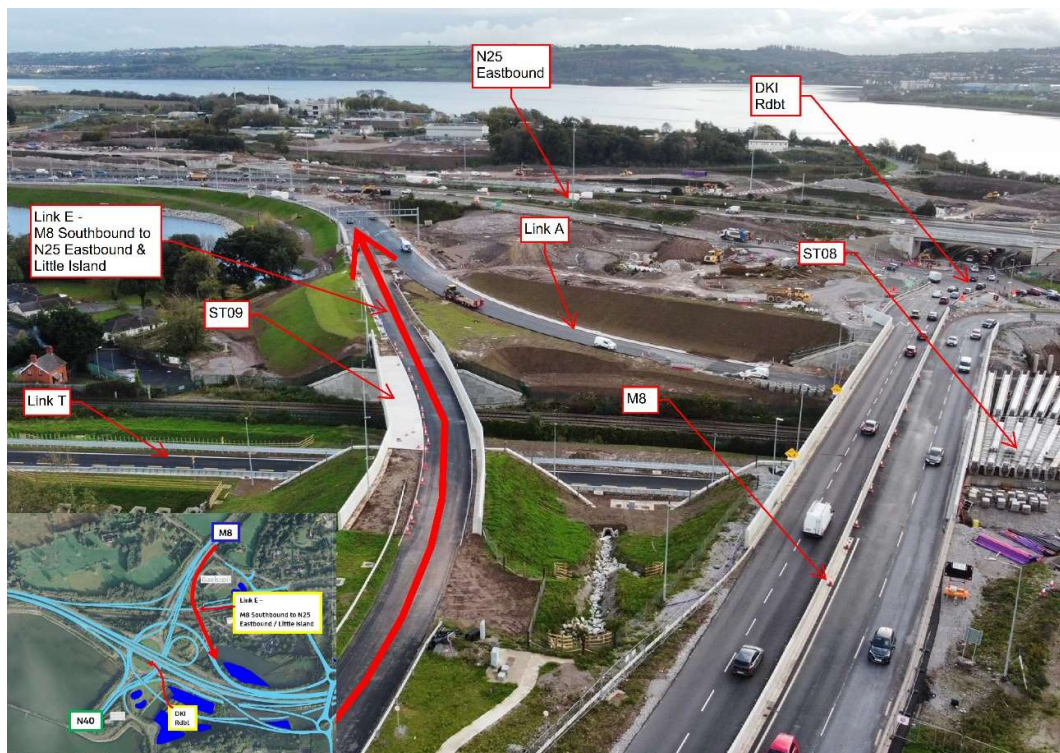


N25 Eastbound merge from the Interchange Roundabout closing on Sunday 20th November 2022 at 11am.

- Link E will provide a new free-flow Link for Southbound traffic on the M8 wishing to head east on the N25 or wishing to access Little Island – the new route is shown coloured red on both the layout plan and the aerial photograph below.



Link E - M8 Southbound to N25 Eastbound / Little Island.

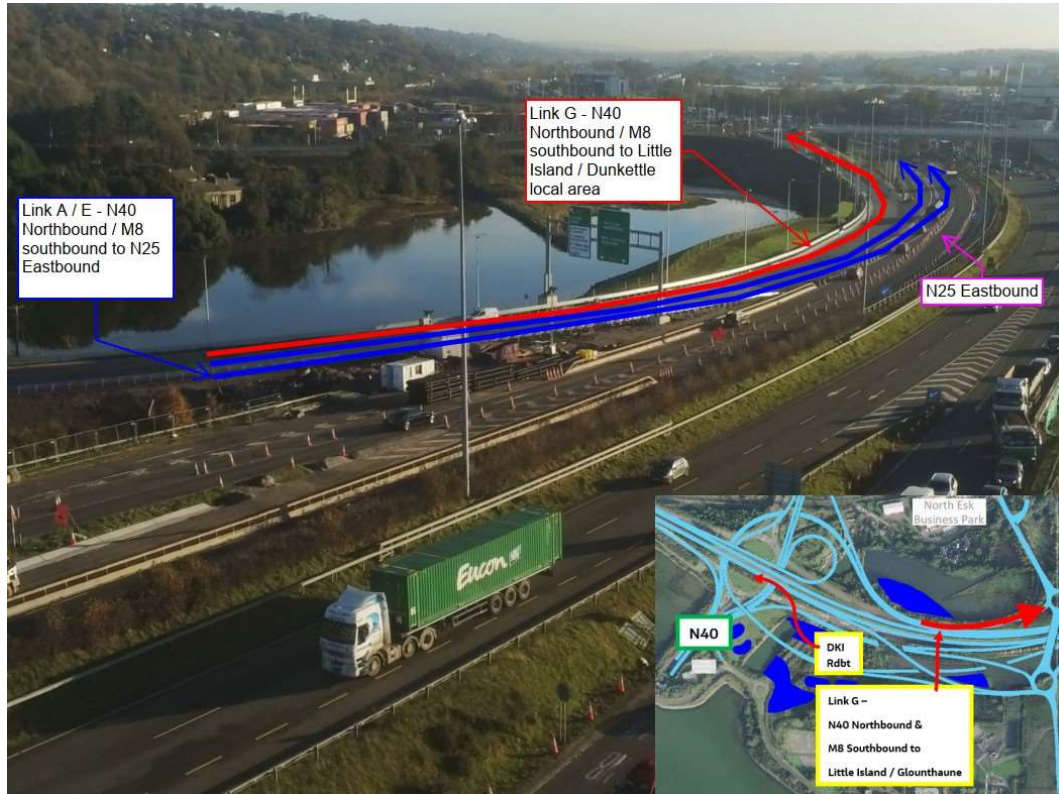


Link E - M8 Southbound to N25 Eastbound / Little Island.

- Traffic utilising Link E will merge with Link A traffic and will then have the option of merging onto the N25 Eastbound or proceeding via Link G to the Northern Roundabout of the new Eastern Interchange, in order to access Little Island – Link G will facilitate Link A-E traffic wishing to access Little Island as shown coloured red in the layout plan and aerial photograph below



Link G - N40 Northbound & M8 Southbound to Little Island & Glounthaune.



Link G - N40 Northbound & M8 Southbound to Little Island & Glounthaune.

- Motorists are reminded that speed control vans will be in place on site on a continuous basis over the coming period. Additionally, members of An Garda Síochána will be on site intermittently from Sunday the 20th onwards to provide assistance in relation to the new alignment. Motorists are requested to take particular care over the coming days as the new layout becomes established.

- Progress updates in relation to the proposed Link openings will be issued by email, via the app, via twitter, etc. as works progress over the weekend.

- Following on immediately from opening of the new Road Links, timings for the Interchange Roundabout traffic lights will be adjusted. These timings will then be fine tuned over the period after opening of the new Links. There is an element of trial and error associated with this process but we hope to have optimised traffic light timings within a couple of days of the new Link Roads opening.

- Following on from the opening of Links A, E and G, further more minor adjustments will be made in a number of areas of the site before the end of November 2022. Details in relation to these subsequent works will be provided in future updates.

- The videos hereunder provide a useful overview of how Links A, E and G will look on opening

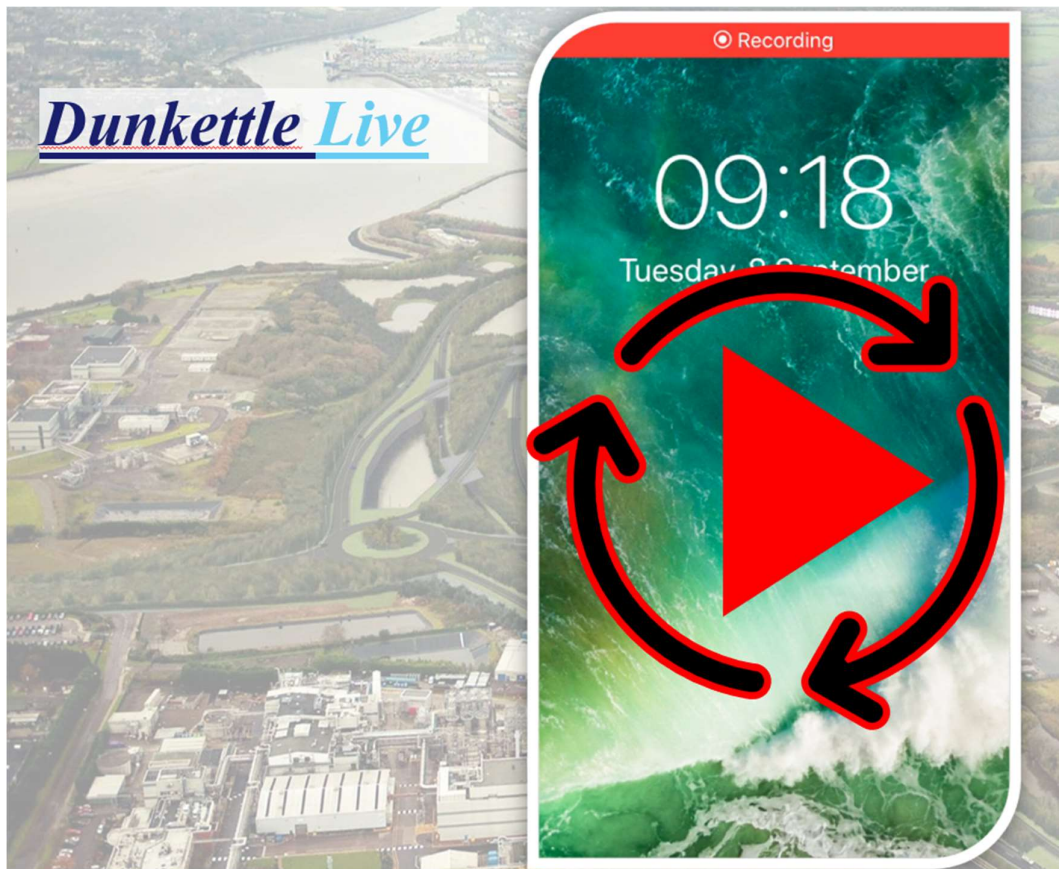
The video below shows the new route of Link A for traffic heading Northbound on the N40 through the Jack Lynch Tunnel wishing to access the N25 Eastbound or Little Island/Dunkettle local area.



The video below shows the new route of Link E for traffic heading Southbound on the M8 wishing to access the N25 Eastbound or Little Island/Dunkettle local area.



Dunkettle Live Traffic App



Click on the icon above to see the benefits of the Dunkettle Live App.



Dunkettle Live App: Download from [Apple App store](#) or from [Google Play store](#)

As always, if there are any queries or comments in relation to these works, please contact us at:

Phone: 1800 810077 (at any time), **Email:** roadconstruction@ccc-site.com.



Further information on the Dunkettle Scheme can be accessed www.dunkettle.ie.

Real time traffic information can be accessed via www.dunkettletraffic.ie or on the Dunkettle Live App ([Apple App store](#) and [Google Play store](#)).

New subscribers to the newsletter can register: www.dunkettle.ie/newslettersignup



[More at www.Dunkettle.ie](http://www.Dunkettle.ie)



Your email address is on a list that we use to keep you informed on the progress on the N40 and Dunkettle Interchange works.

Want to change how you receive these emails?

You can [update your preferences](#) or [unsubscribe from this list](#).
