

Dunkettle Progress Update

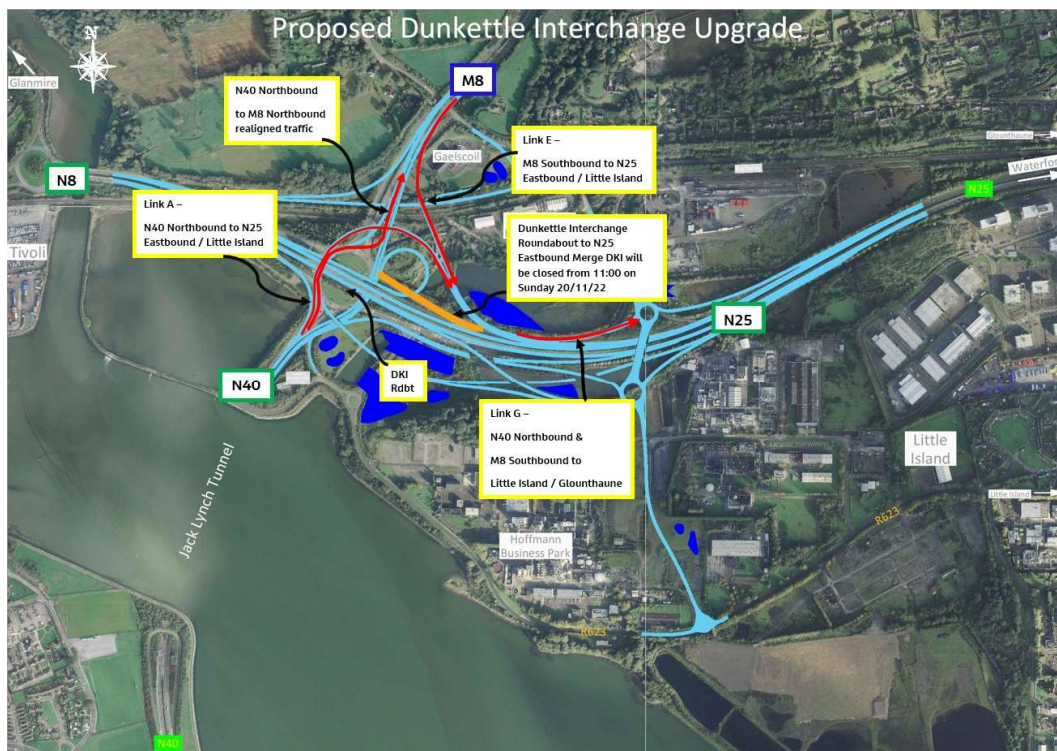
20th November 2022



Twitter



Website



- Works associated with completion of the new links have progressed well and Links A, E and G have now been opened to traffic.
- Motorists are again requested to pay particular attention to signage and to exercise particular care and attention over the coming days as the new layout becomes established.

- As always, if there are any queries or comments in relation to these works, please contact us at:
- Phone: 1800 810077 (at any time)
- Email: roadconstruction@ccc-site.com.

- The videos hereunder provide a useful overview of how Links A, E and G will look to motorists.

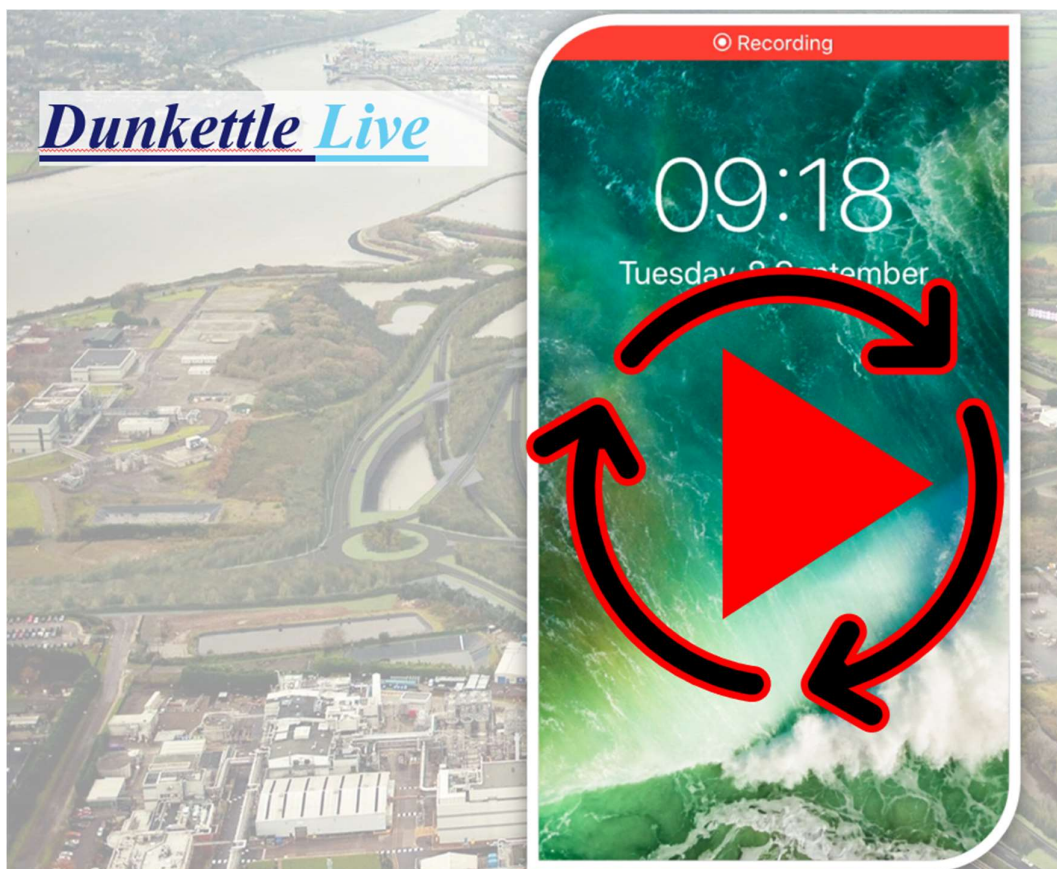
The video below shows the new route of Link A for traffic heading Northbound on the N40 through the Jack Lynch Tunnel wishing to access the N25 Eastbound or Little Island/Dunkettle local area.



The video below shows the new route of Link E for traffic heading Southbound on the M8 wishing to access the N25 Eastbound or Little Island/Dunkettle local area.



Dunkettle Live Traffic App



Click on the icon above to see the benefits of the Dunkettle Live App.



Dunkettle Live App: Download from [Apple App store](#) or from [Google Play store](#)

As always, if there are any queries or comments in relation to these works, please contact us at:
Phone: 1800 810077 (at any time), **Email:** roadconstruction@ccc-site.com.



Further information on the Dunkettle Scheme can be accessed www.dunkettle.ie.

Real time traffic information can be accessed via www.dunkettletraffic.ie or on the Dunkettle Live App ([Apple App store](#) and [Google Play store](#)).

New subscribers to the newsletter can register: www.dunkettle.ie/newslettersignup



[More at www.Dunkettle.ie](http://www.Dunkettle.ie)



Your email address is on a list that we use to keep you informed on the progress on the N40 and Dunkettle Interchange works.

Want to change how you receive these emails?
You can [update your preferences](#) or [unsubscribe from this list](#).
