

Dunkettle Progress Update

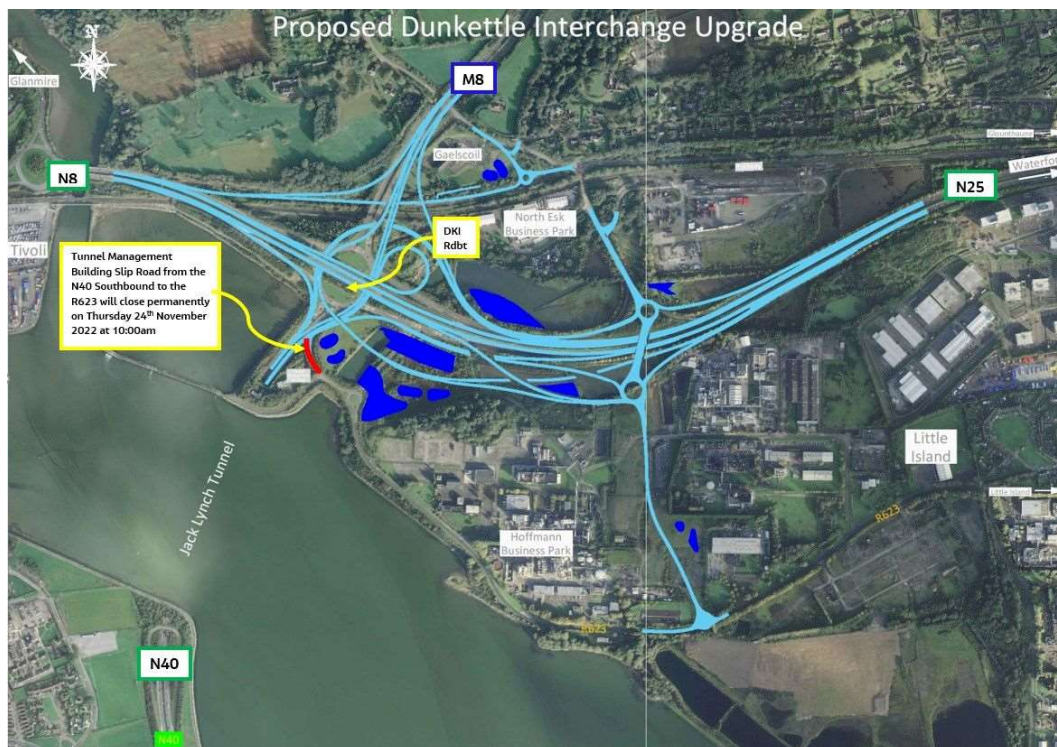
23rd November 2022



Twitter



Website



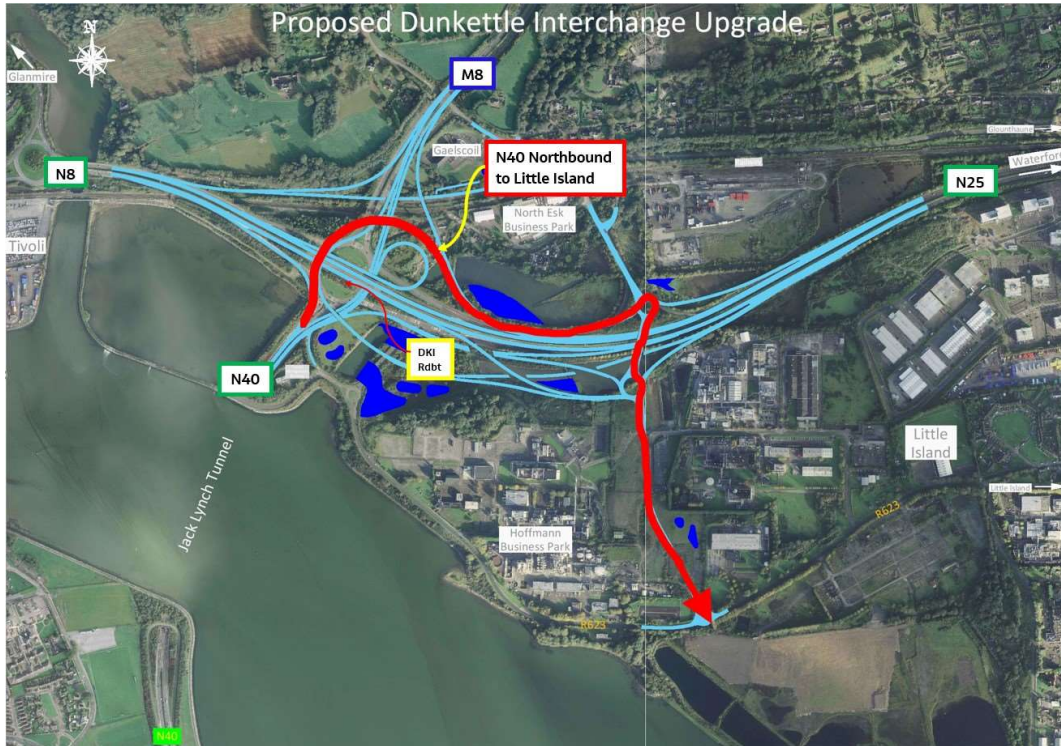
- Motorists are reminded that the Tunnel Management Building slip road off the N40 southbound (shown coloured red in the layout plan

above and aerial photo below) will close at 10:00am on tomorrow, Thursday 24th November 2022.

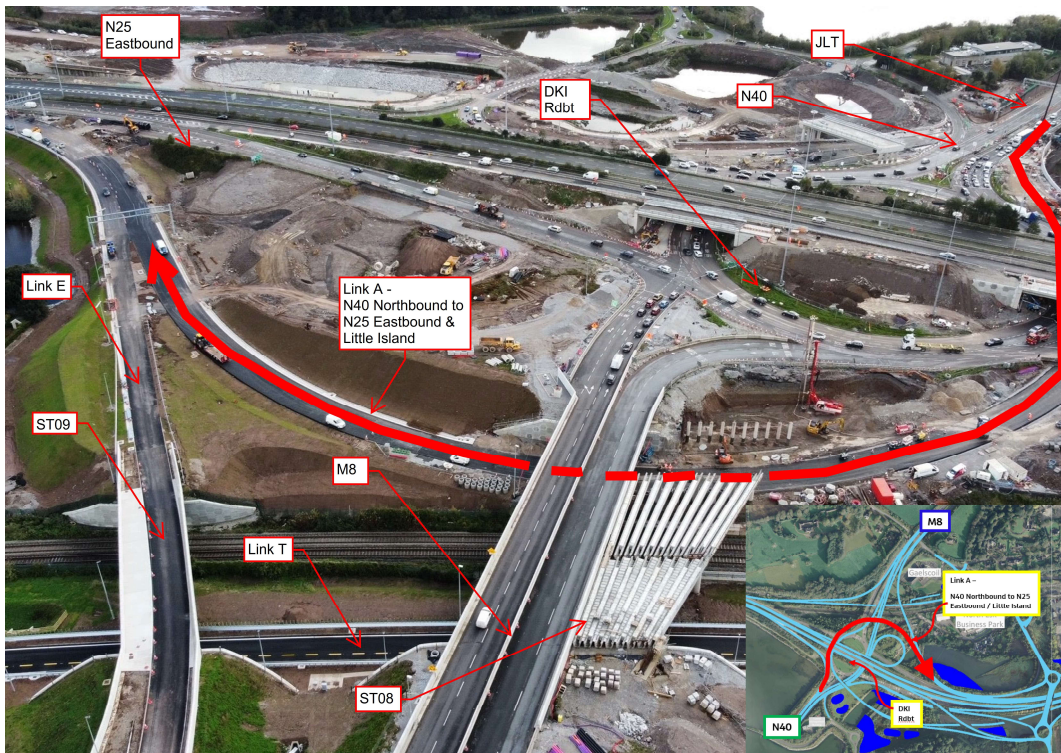


Slip road off the N40 southbound will close at 10:00am on tomorrow, Thursday 24th November 2022.

- The alternative route into Little Island from the N40 Northbound is shown coloured red in the layout plan and aerial photo below.

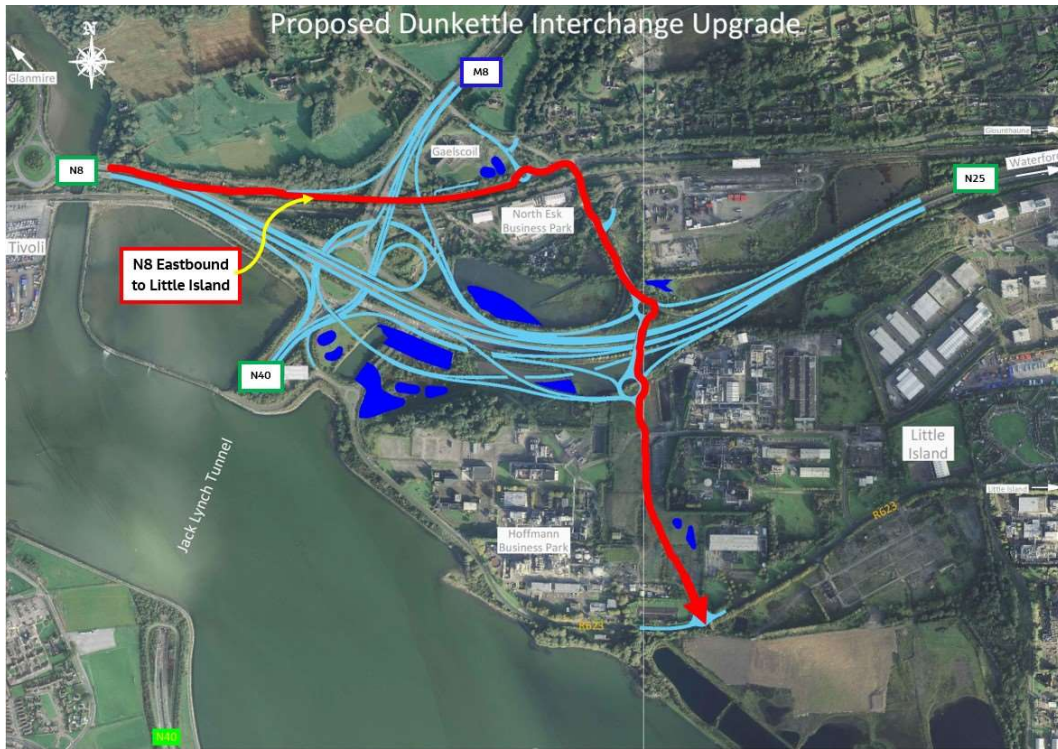


N40 Northbound to Little Island.

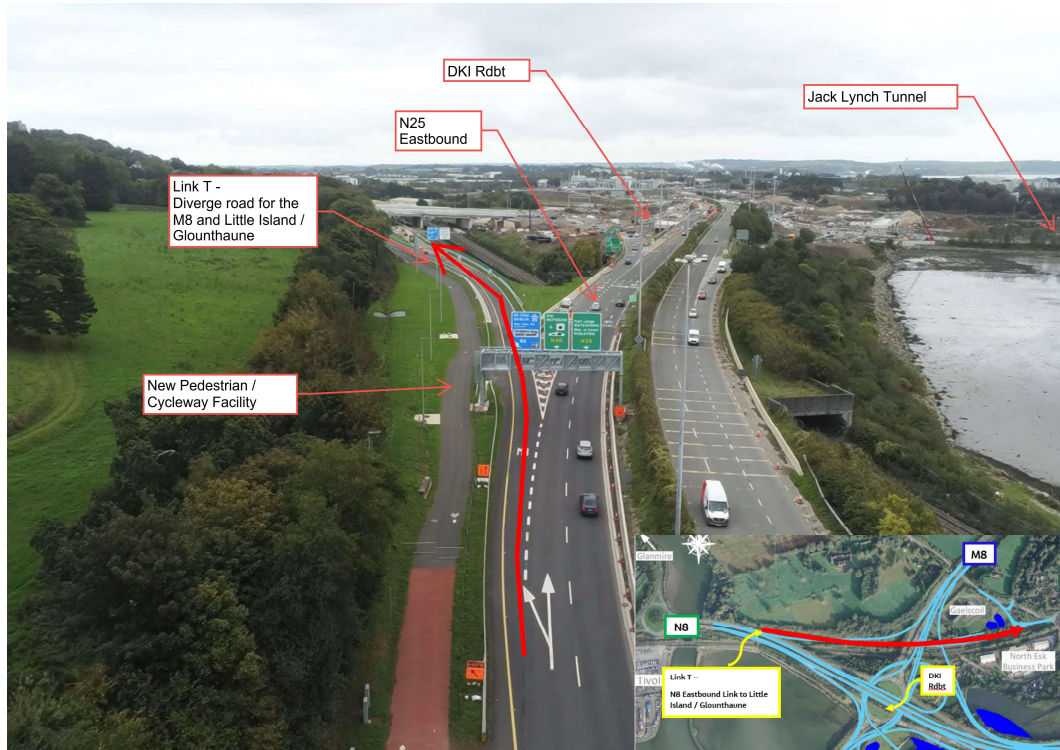


N40 Northbound to Little Island.

- The alternative route into Little Island from the N8 Eastbound is shown coloured red in the layout plan and aerial photo below.

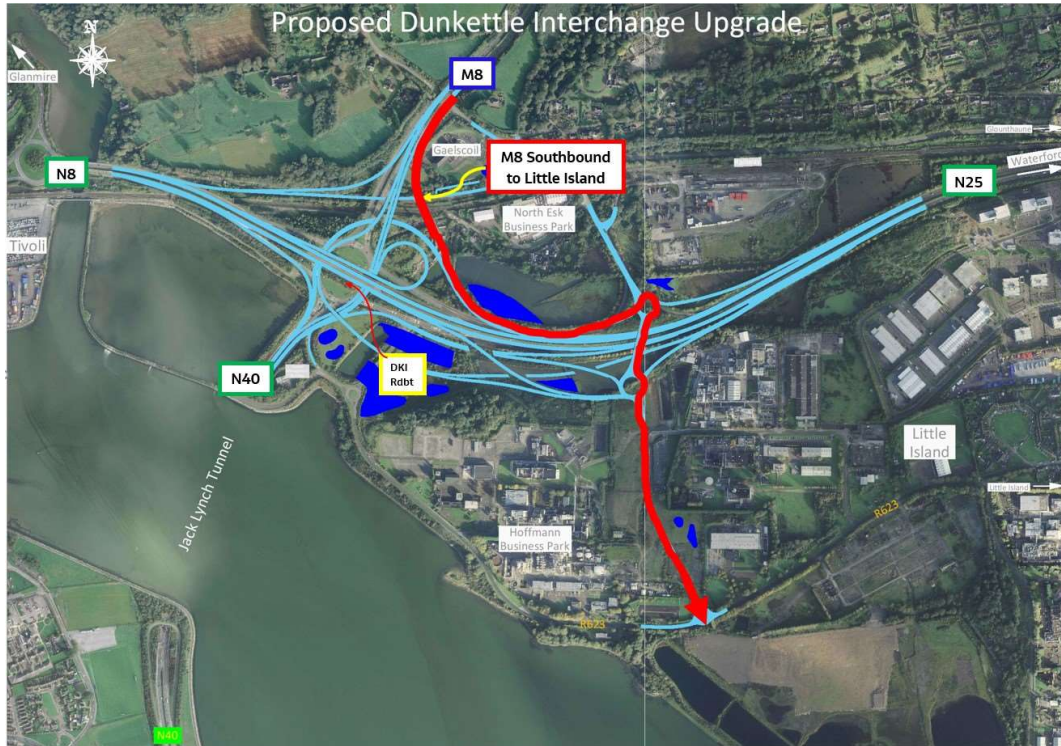


N8 Eastbound to Little Island.

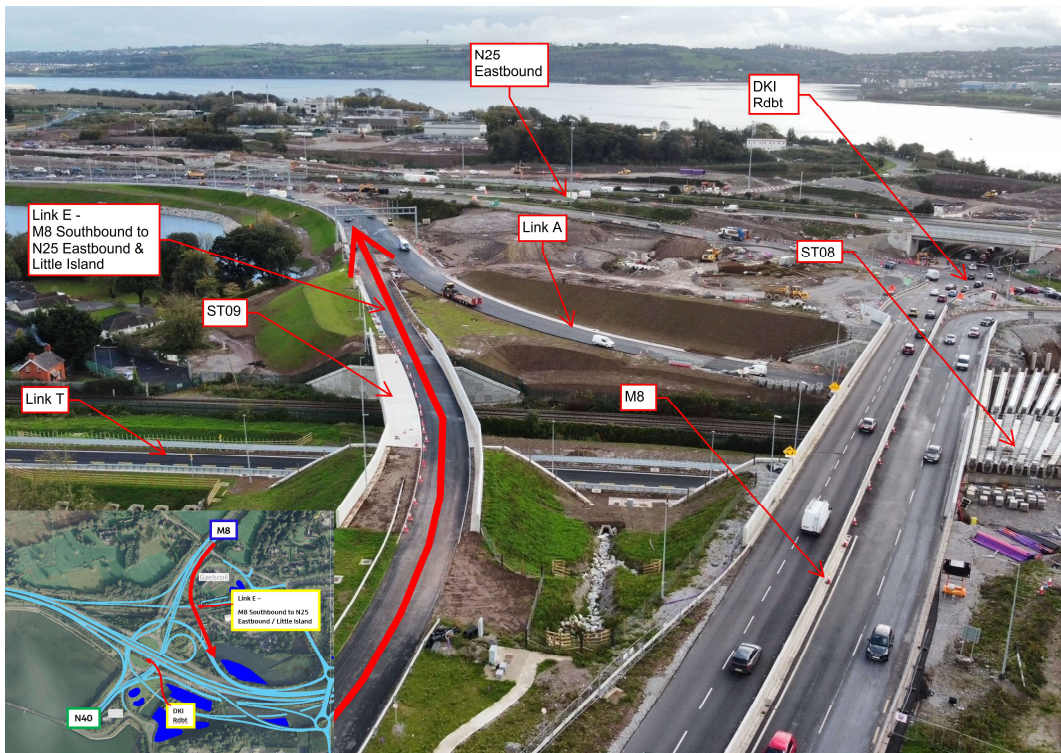


N8 Eastbound to Little Island.

- The alternative route into Little Island from the M8 Southbound is shown coloured red in the layout plan and aerial photo below.



M8 Southbound to Little Island.



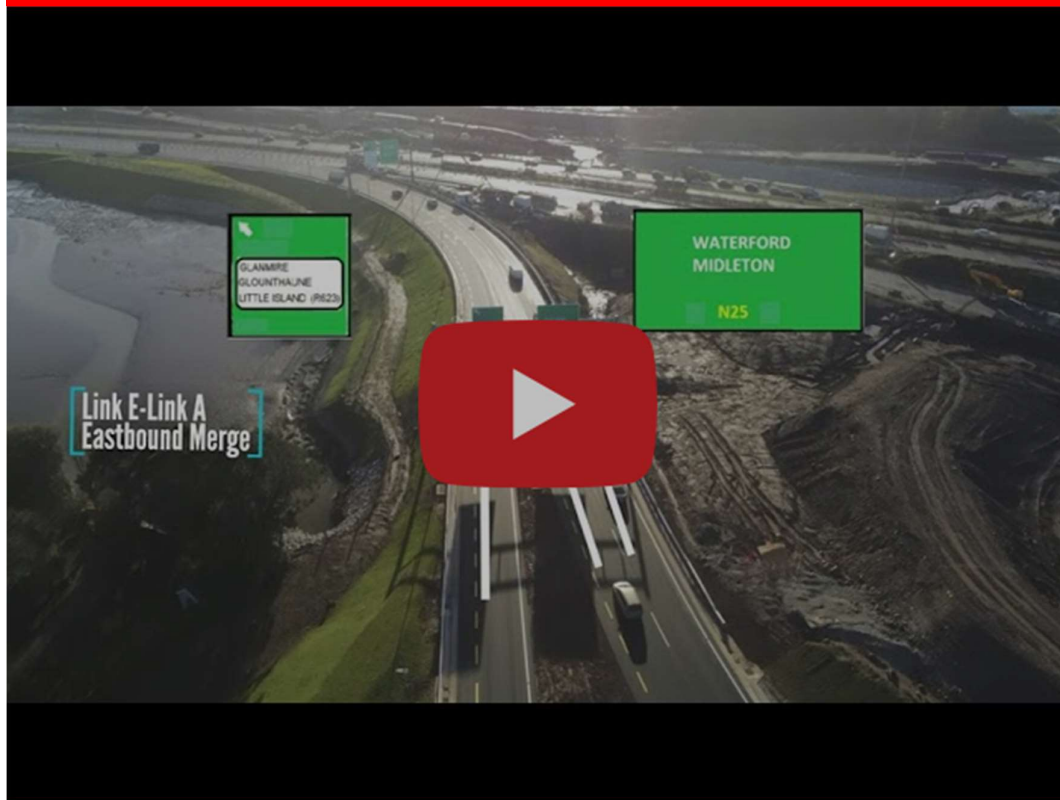
M8 Southbound to Little Island.

- Links to three explanatory videos illustrating the three routes above are included hereunder.

The video below shows the route for traffic heading Northbound on the N40 through the Jack Lynch Tunnel wishing to access Little Island.



The video below shows the route for traffic heading Southbound on the M8 wishing to access Little Island.

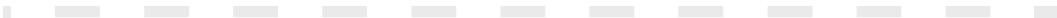


The video below shows the route for traffic heading Eastbound on the N8 wishing to access Little Island.

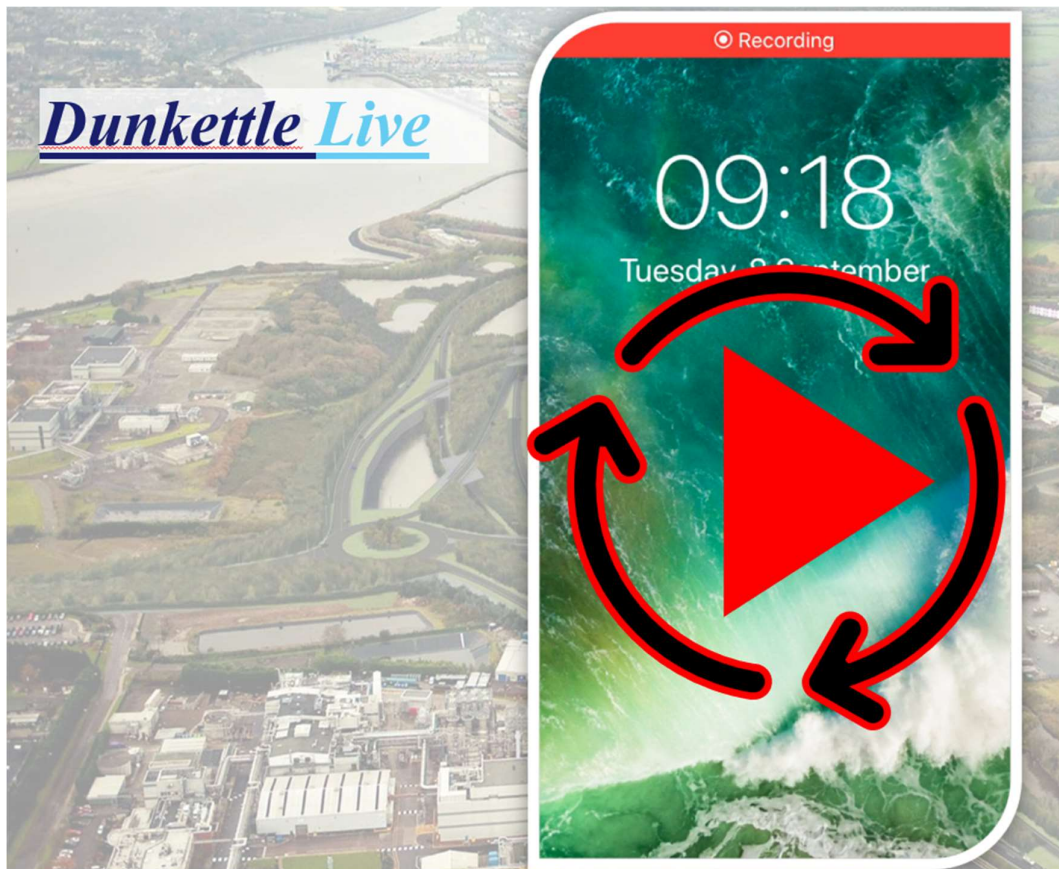


- For N25 Westbound traffic, the route into Little Island will continue to be via Junction 2, the Little Island Interchange

- Please contact us (as per the contact details below) if you have any queries in relation to the new arrangement.
- A scale model showing the full new layout is available for viewing at the site office in Inchera, Little Island.



Dunkettle Live Traffic App



Click on the icon above to see the benefits of the Dunkettle Live App.



Dunkettle Live App: Download from [Apple App store](#) or from [Google Play store](#)

As always, if there are any queries or comments in relation to these works, please contact us at:
Phone: 1800 810077 (at any time), **Email:** roadconstruction@ccc-site.com.



Further information on the Dunkettle Scheme can be accessed www.dunkettle.ie.

Real time traffic information can be accessed via www.dunkettletraffic.ie or on the Dunkettle Live App ([Apple App store](#) and [Google Play store](#)).

New subscribers to the newsletter can register: www.dunkettle.ie/newslettersignup



[More at www.Dunkettle.ie](http://www.Dunkettle.ie)



Your email address is on a list that we use to keep you informed on the progress on the N40 and Dunkettle Interchange works.

Want to change how you receive these emails?

You can [update your preferences](#) or [unsubscribe from this list](#).
