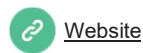


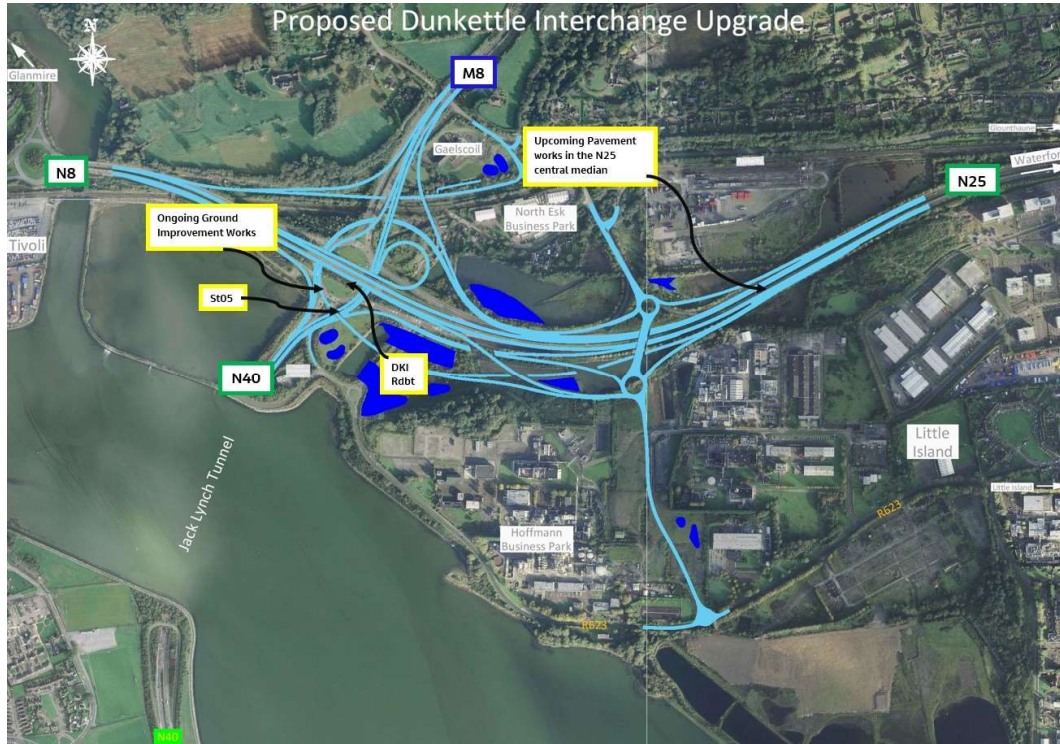
# **Dunkettle Progress Update**

## ***02nd December 2022***

**The Traffic lights at Dunkettle malfunctioned overnight leading to significant delays on the N40 eastbound during rush hour this morning.**

**Repair crews were mobilised immediately and the problem was resolved just after 9am with queues cleared by mid-morning.**

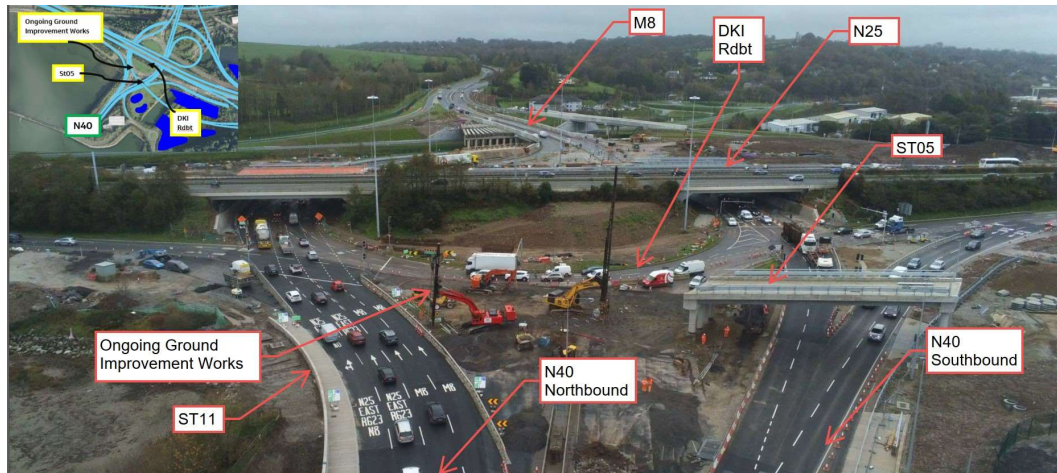




- Following on from the various link openings over recent weeks, the new interim alignment is becoming established. We do not anticipate any further major changes before the Christmas break.

- Motorists are reminded that speed control and CCTV monitoring will remain in place across the entire site for the foreseeable future.

- Following on from the realignment of the M8 southbound and N25 westbound approaches to the tunnel, ground improvement works are now well underway in the area of Structure St05 – see photograph below. The ground improvement works are required in order to support the new embankment in this area.



**Ongoing Ground Improvement Works west of Structure St05.**

- Over the next week or two, surfacing works will continue in the N25 central median area – no disruption to traffic is anticipated as a result of these works – see photograph below.



**Upcoming N25 Pavement Works.**



- As part of the ground improvement works, piled supports will be required in the western section of the existing roundabout. These works will get underway W/C 5th December 2022 and will be carried out under night time working in order to minimise the disruption to traffic. The aerial shot below shows the ongoing works and the upcoming works area.



**Piling Works to be progressed west of Structure St05.**

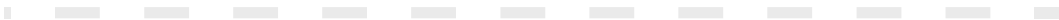
- Please let us know if you would like any specific topics covered in future updates.

- As noted in our previous updates, a scale model of the Scheme is available for viewing at the site office in Inchera, Little Island. Please call 1800 810077 (at any time) to arrange a viewing or simply call into the site office during working hours - see photograph below.

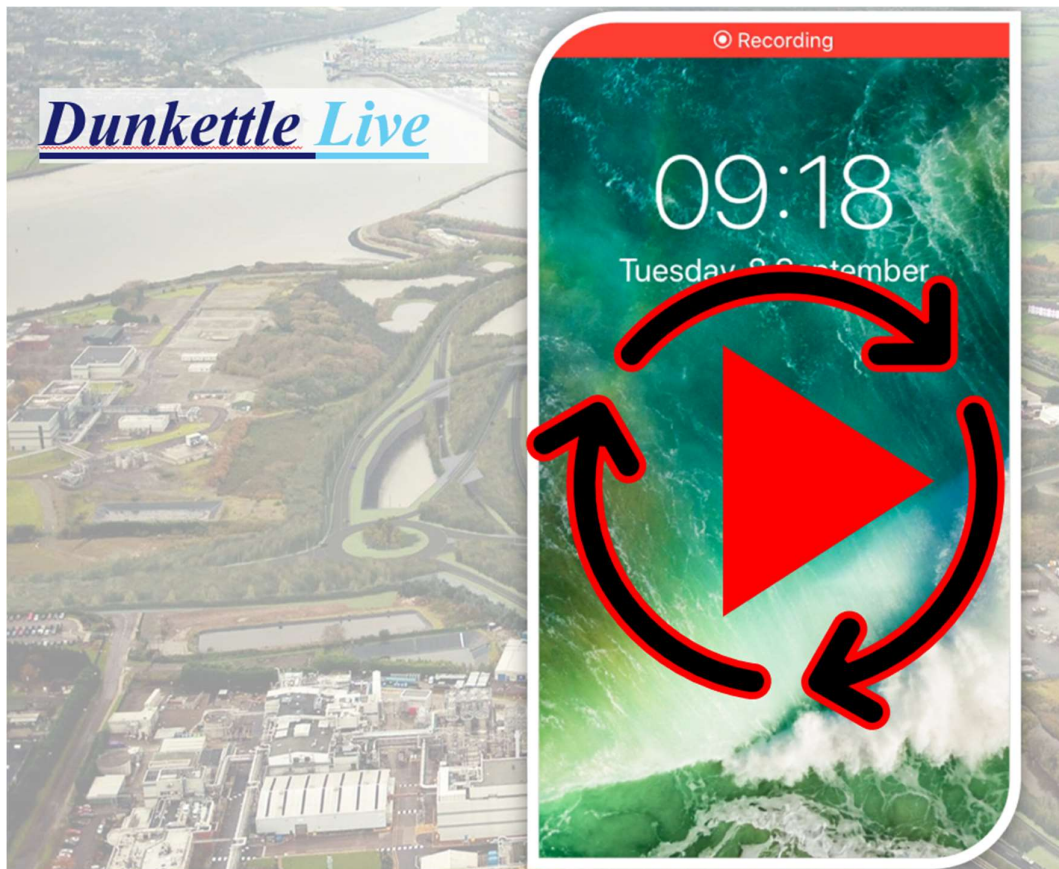


**Dunkettle Interchange Upgrade Scheme Scale Model.**

**This week's video shows the ongoing works in the vicinity of  
the Dunkettle Interchange Roundabout.**



# Dunkettle Live Traffic App



Click on the icon above to see the benefits of the Dunkettle Live App.



Dunkettle Live App: Download from [Apple App store](#) or from [Google Play store](#)



---

As always, if there are any queries or comments in relation to these works, please contact us at:  
**Phone:** 1800 810077 (at any time), **Email:** [roadconstruction@ccc-site.com](mailto:roadconstruction@ccc-site.com).



Further information on the Dunkettle Scheme can be accessed [www.dunkettle.ie](http://www.dunkettle.ie).

Real time traffic information can be accessed via [www.dunkettletraffic.ie](http://www.dunkettletraffic.ie) or on the Dunkettle Live App ([Apple App store](#) and [Google Play store](#)).

New subscribers to the newsletter can register: [www.dunkettle.ie/newslettersignup](http://www.dunkettle.ie/newslettersignup)



[More at www.Dunkettle.ie](http://www.Dunkettle.ie)



---

Your email address is on a list that we use to keep you informed on the progress on the N40 and Dunkettle Interchange works.

Want to change how you receive these emails?

You can [update your preferences](#) or [unsubscribe from this list](#).

---