

Dunkettle Progress Update

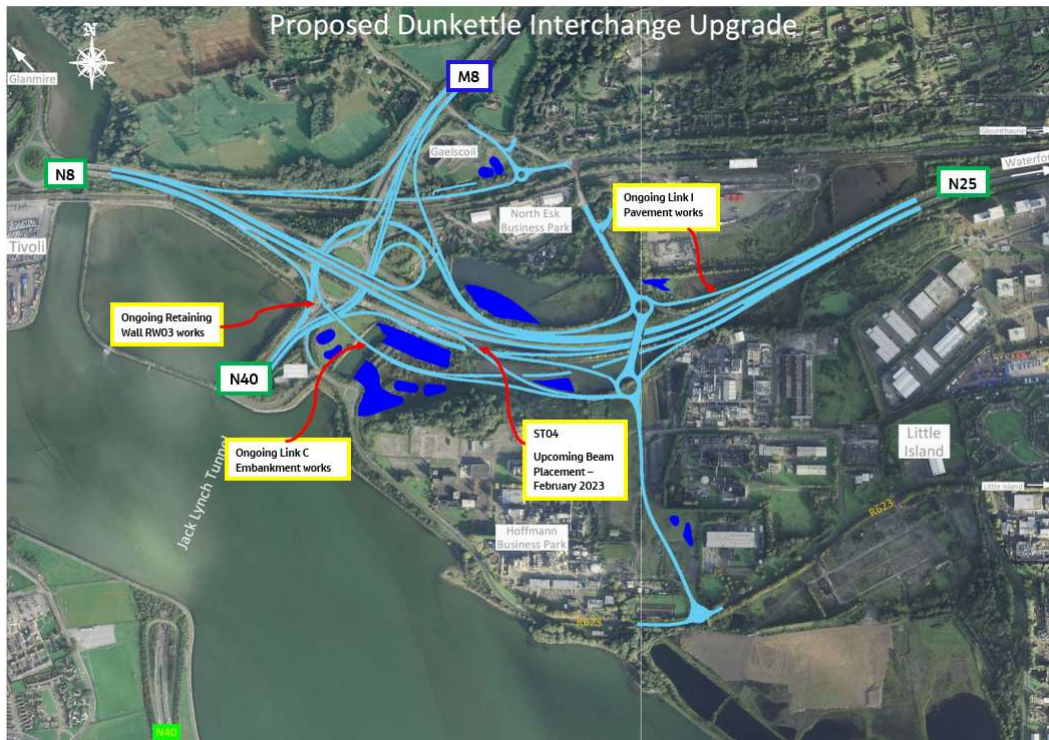
27th January 2023



Twitter



Website



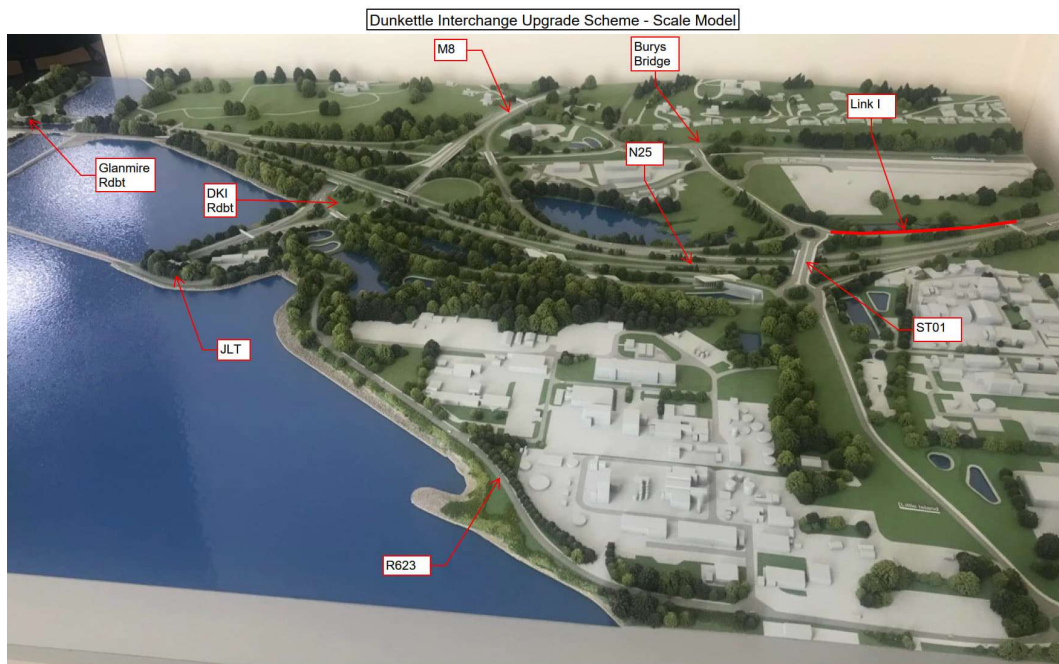
- Motorists are again reminded that speed control measures, coupled with CCTV monitoring are in place across the site and will remain in place over the coming months.

- Surfacing works are nearing completion at Link I – see photograph below. We now hope to open this new link road to traffic during week ending Saturday 4th February 2023. We will confirm the date and time via a supplementary newsletter in advance of the opening. This will provide a new access from both the Bury's Bridge Roundabout and the R623 Roundabout to the N25 eastbound.



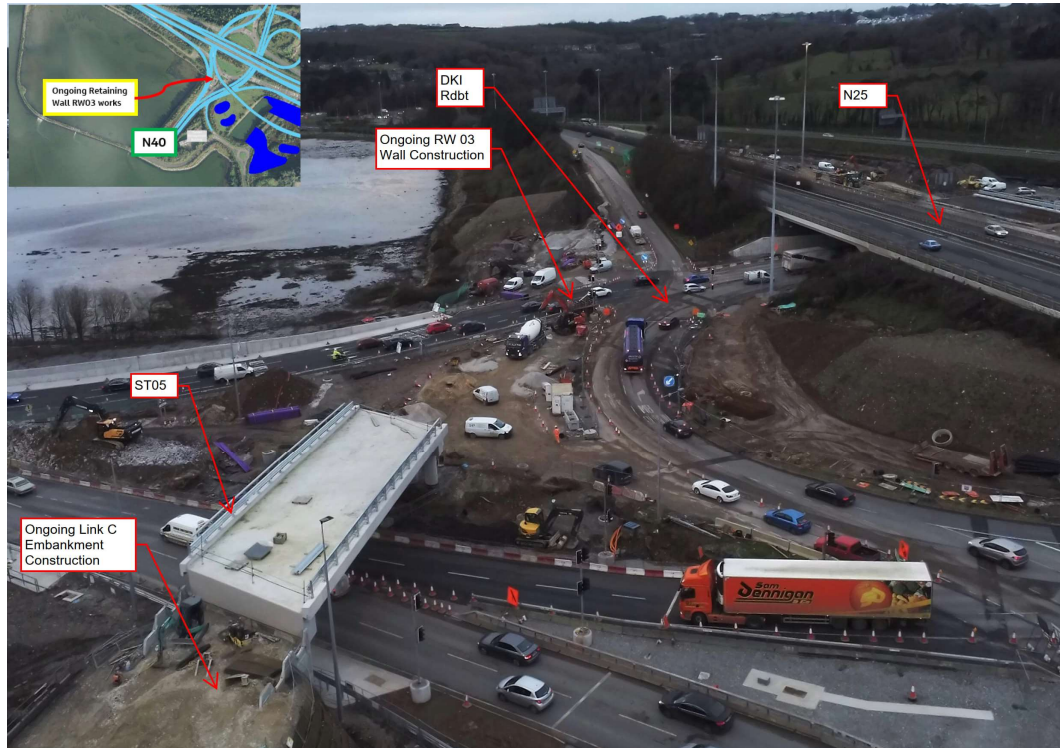
Works ongoing at Link I in advance of the upcoming road opening.

- A push button traffic light crossing will facilitate the crossing of this link by both pedestrians and cyclists.
- A scale model of the scheme is available for viewing by members of the public at the site office in Inchera, Little Island during normal working – see photograph below.



Dunkettle Interchange Scheme scale model available for viewing.

- We now expect that the localised lane restriction on the N40 immediate approach to the Interchange Roundabout will continue for a further two to three days. This lane closure is required in order to progress the completion of the new Retaining Wall RW 03 at this location - see photograph below. Thankfully, this restriction has caused no disruption to traffic.



Works ongoing for RW03 alongside the N40 Northbound.

- Embankment construction at Link C at the eastern side of Structure ST05 is progressing well – see photograph below. These works will continue over the coming weeks.



Embankment construction ongoing at Link C.

- We now hope to place the beams at Structure ST04 during week commencing Monday 6th February 2023 – see photograph below of the ongoing works. Further details will be included in the upcoming newsletters.



Completion of a further concrete pour at Structure St04 alongside the N25 Westbound.

- In overall terms, the works remain on track for completion by the due date of February 2024.

This week's video shows the ongoing works alongside the N25 at both the southern and northern sides.



Dunkettle Live Traffic App



Click on the icon above to see the benefits of the Dunkettle Live App.



Dunkettle Live App: Download from [Apple App store](#) or from [Google Play store](#)

As always, if there are any queries or comments in relation to these works, please contact us at:
Phone: 1800 810077 (at any time), **Email:** roadconstruction@ccc-site.com.



Further information on the Dunkettle Scheme can be accessed www.dunkettle.ie.

Real time traffic information can be accessed via www.dunkettletraffic.ie or on the Dunkettle Live App ([Apple App store](#) and [Google Play store](#)).

New subscribers to the newsletter can register: www.dunkettle.ie/newslettersignup



[More at www.Dunkettle.ie](http://www.Dunkettle.ie)



Your email address is on a list that we use to keep you informed on the progress on the N40 and Dunkettle Interchange works.

Want to change how you receive these emails?

You can [update your preferences](#) or [unsubscribe from this list](#).
