

Dunkettle Progress Update

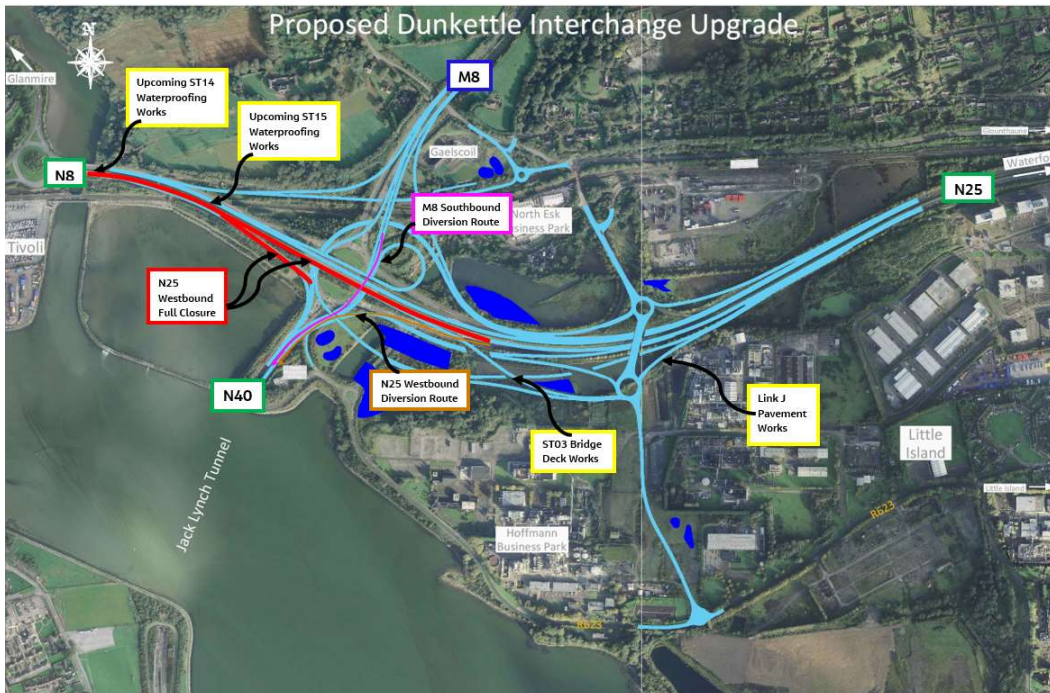
21st April 2023



Twitter



Website



- Motorists are again reminded that speed control measures, coupled with CCTV monitoring are in place across the site and will remain in place over the coming months.

- The bridge deck at Structure ST03 was cast on Thursday, 20th April 2023 – see photograph below.



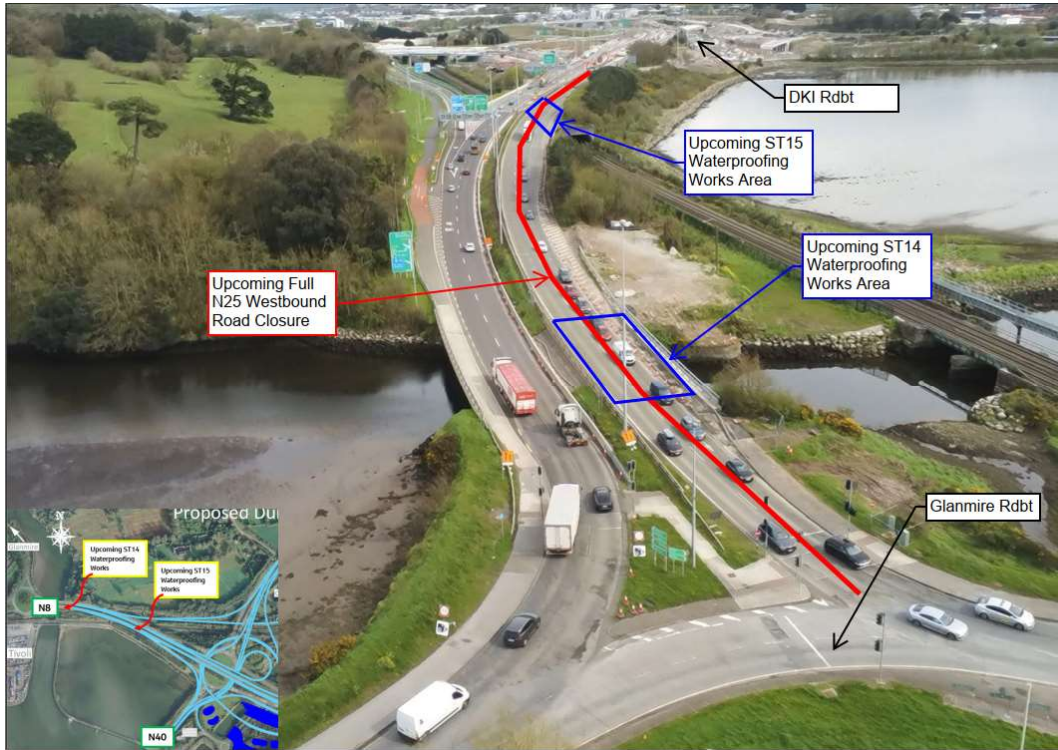
Concreting works ongoing at Structure ST03.

- Surfacing works have recommenced on site, with a current focus on surfacing of what will ultimately become Link J – see photograph below.



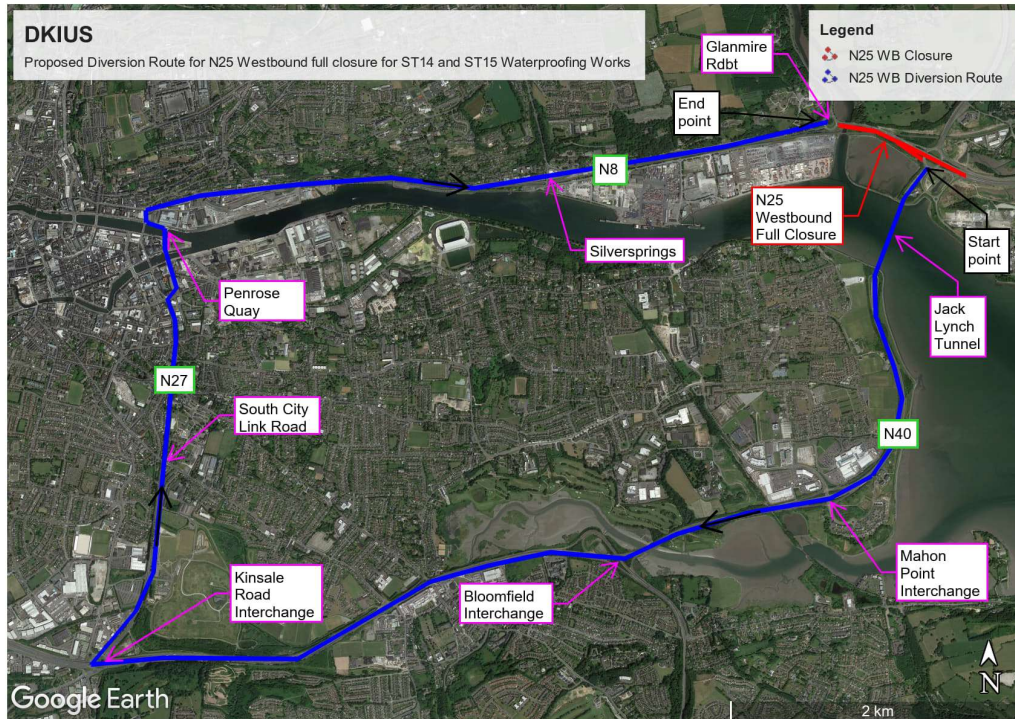
Pavement works ongoing at Link J.

- A temporary road closure will be implemented on the N25 Westbound at 7pm on Friday, the 21st April 2023 and this temporary closure will continue until 9pm on Saturday, the 22nd April 2023. The closure is required to facilitate renewal of the bridge deck waterproofing at Structure ST14 and Structure ST15 (see photo below).



Upcoming Structure ST14 waterproofing works location under N25 westbound full closure

- A number of local diversion routes are available but, for traffic wishing to access Cork City Centre, the signposted diverted route will be via the Jack Lynch Tunnel, the N40 and the Cork City South Ring Road - see layout plan below.



Main Diversion route for traffic during the N25 Westbound full closure.

- The works are being carried out under night-time and weekend working in order to minimise disruption to traffic. However, motorists should allow additional time for journeys in the Dunkettle area during the closure period, particularly during busy traffic periods on the afternoon of Saturday, 22nd April 2023.

- Updates in relation to the ongoing works will be issued via the normal channels over the weekend and the N25 Westbound, in this area will be reopened to traffic as early as possible.

- See photograph below of similar works previously carried out on the N25 Eastbound on Structure ST14.



Waterproofing works being completed previously at ST14 under the N25 Eastbound.

This week's video shows the extent of the upcoming road closure on N25 Westbound.



Dunkettle Live Traffic App



Click on the icon above to see the benefits of the Dunkettle Live App.



Dunkettle Live App: Download from [Apple App store](#) or from [Google Play store](#)

As always, if there are any queries or comments in relation to these works, please contact us at:
Phone: 1800 810077 (at any time), **Email:** roadconstruction@ccc-site.com.



Further information on the Dunkettle Scheme can be accessed www.dunkettle.ie.

Real time traffic information can be accessed via www.dunkettletraffic.ie or on the Dunkettle Live App ([Apple App store](#) and [Google Play store](#)).

New subscribers to the newsletter can register: www.dunkettle.ie/newslettersignup



[More at www.Dunkettle.ie](http://www.Dunkettle.ie)



Your email address is on a list that we use to keep you informed on the progress on the N40 and Dunkettle Interchange works.

Want to change how you receive these emails?

You can [update your preferences](#) or [unsubscribe from this list](#).
