

Dunkettle Progress Update

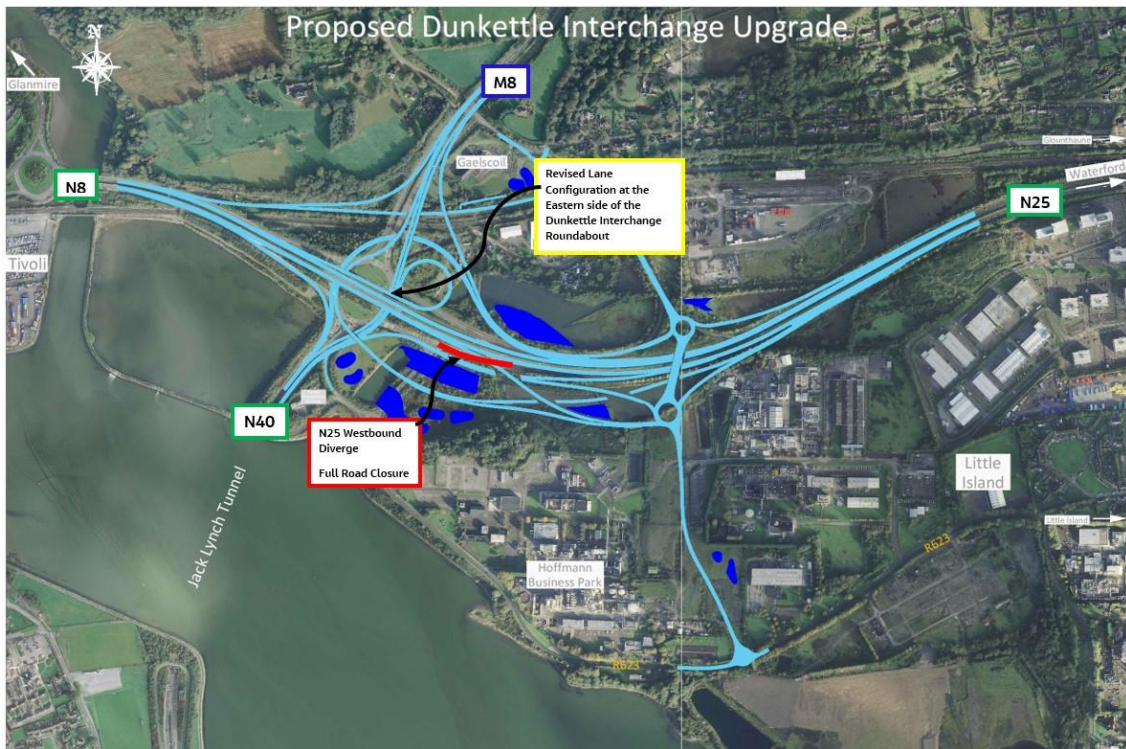
21st June 2023



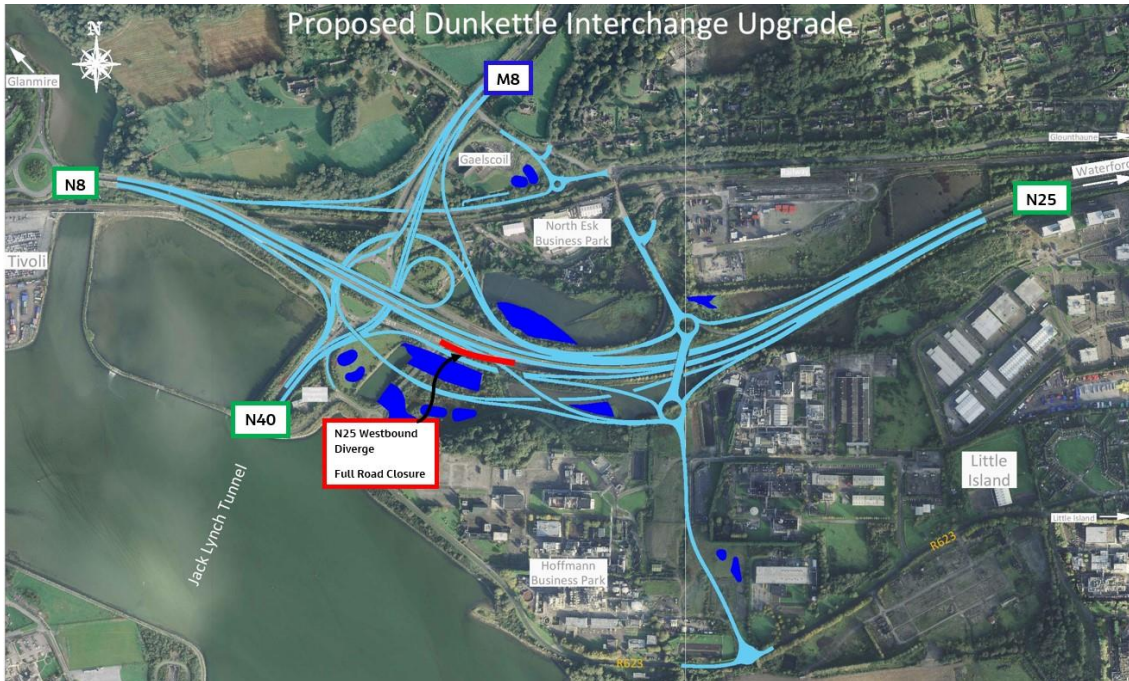
[Twitter](#)



[Website](#)

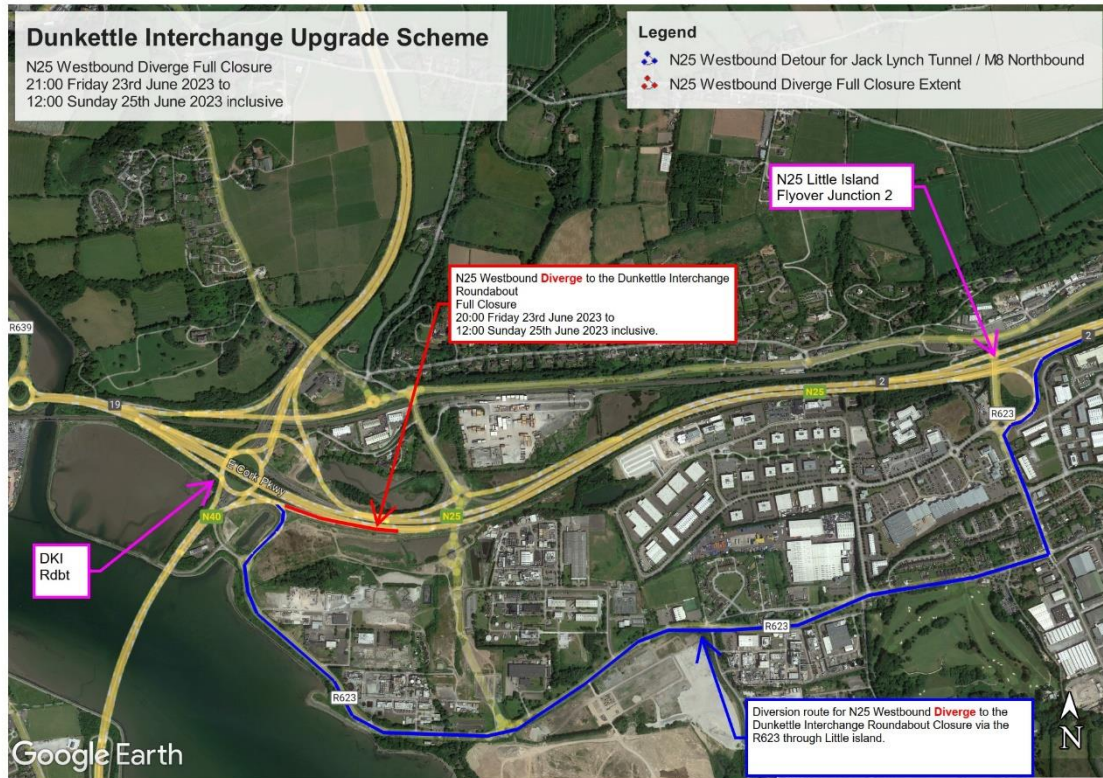


- As noted in our previous updates, the N25 Westbound diverge to the Interchange Roundabout (shown coloured red on the plan immediately hereunder) will be temporarily closed from 21:00 on Friday 23rd June 2023 to 12:00pm on Sunday 25th June 2023.



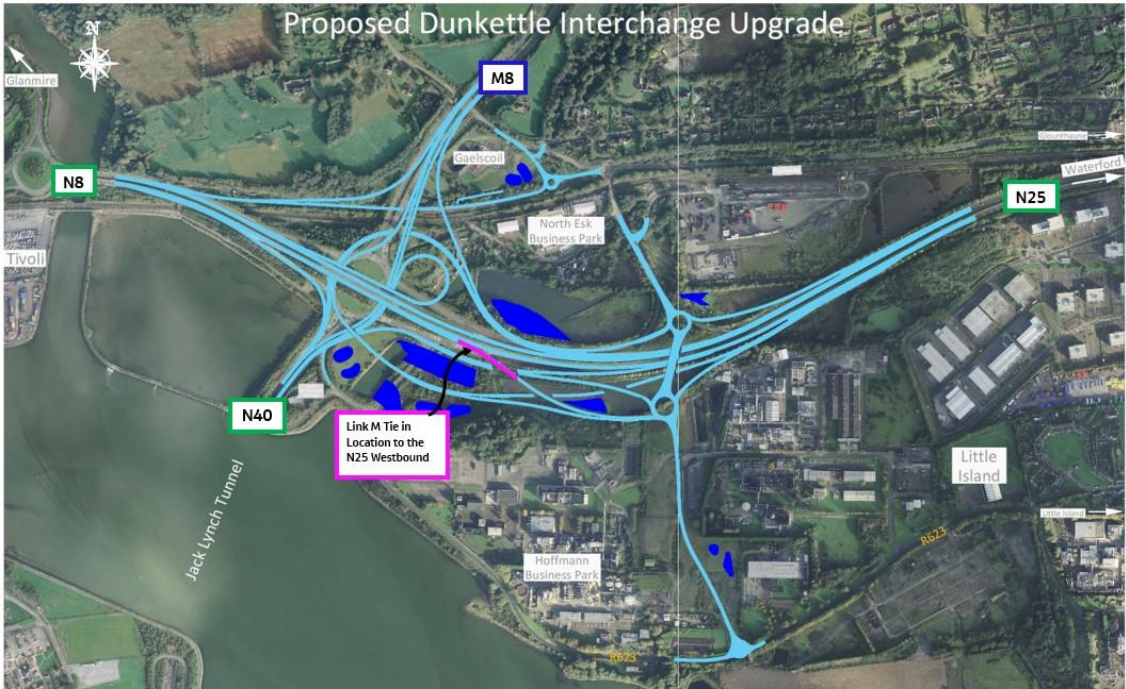
Location of the planned N25 Westbound Diverge to the Dunkettle Interchange Roundabout Closure

- N25 Westbound traffic wishing to access the Tunnel should use the R623 route through Little Island – see layout plan below.

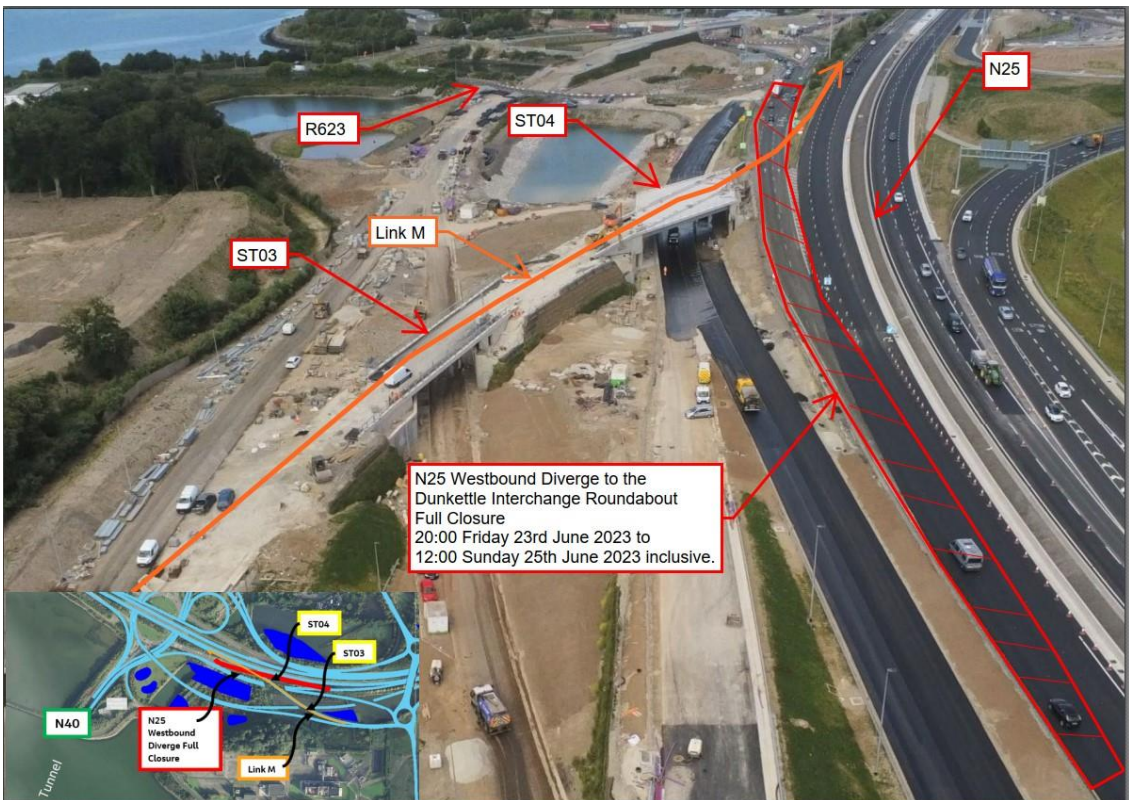


Diversion for N25 Westbound traffic wishing to access the Tunnel and the M8 Northbound during the closure.

- This temporary closure is required to facilitate completion of a tie-in from Link M to the N25 Westbound – see layout plan and photo below.



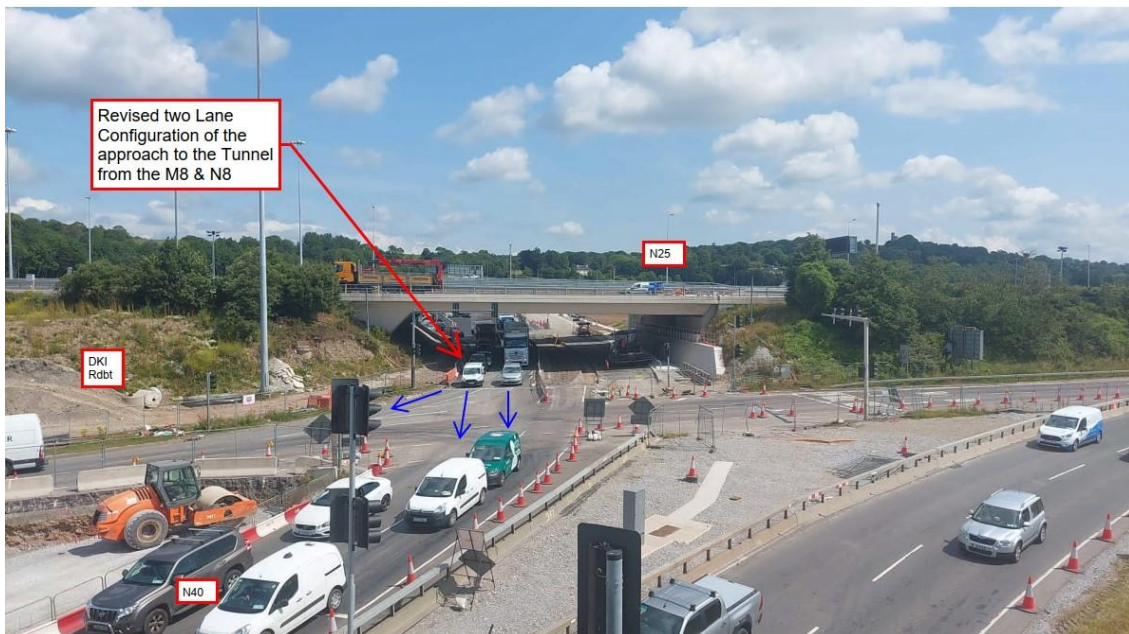
Link M Tie in to the N25 Westbound.



Link M Tie in to the N25 Westbound.

- The temporary tie-in works will be progressed on a 24 hour basis and the works are being carried out under weekend working in order to minimise disruption to traffic. Nevertheless, motorists should allow additional time for their journeys during peak times on Saturday 24th June 2023.

- A revised lane configuration is now in place at the eastern side of the Interchange Roundabout – see photograph below.



New lane configuration installed overnight at the Interchange Roundabout.

- This section of the Interchange Roundabout has been reduced to two lanes, both of which can be used for to access the Tunnel, with the right hand lane also providing access to the N8 westbound towards the city centre.

- Our intention is to open a number of further road links in July 2023 – details to follow in future updates. The two items referenced above are preparatory works associated with the upcoming link openings.

Dunkettle Live Traffic App



Click on the icon above to see the benefits of the Dunkettle Live App.



Dunkettle Live App: Download from [Apple App store](#) or from [Google Play store](#)

As always, if there are any queries or comments in relation to these works, please contact us at:

Phone: 1800 810077 (at any time), **Email:** roadconstruction@ccc-site.com.

Further information on the Dunkettle Scheme can be accessed www.dunkettle.ie.

Real time traffic information can be accessed via www.dunkettletraffic.ie or on the Dunkettle Live App ([Apple App store](#) and [Google Play store](#)).

New subscribers to the newsletter can register: www.dunkettle.ie/newslettersignup



[More at www.Dunkettle.ie](http://www.Dunkettle.ie)



Your email address is on a list that we use to keep you informed on the progress on the N40 and Dunkettle Interchange works.

Want to change how you receive these emails?

You can [update your preferences](#) or [unsubscribe from this list](#).
