

Dunkettle Progress Update

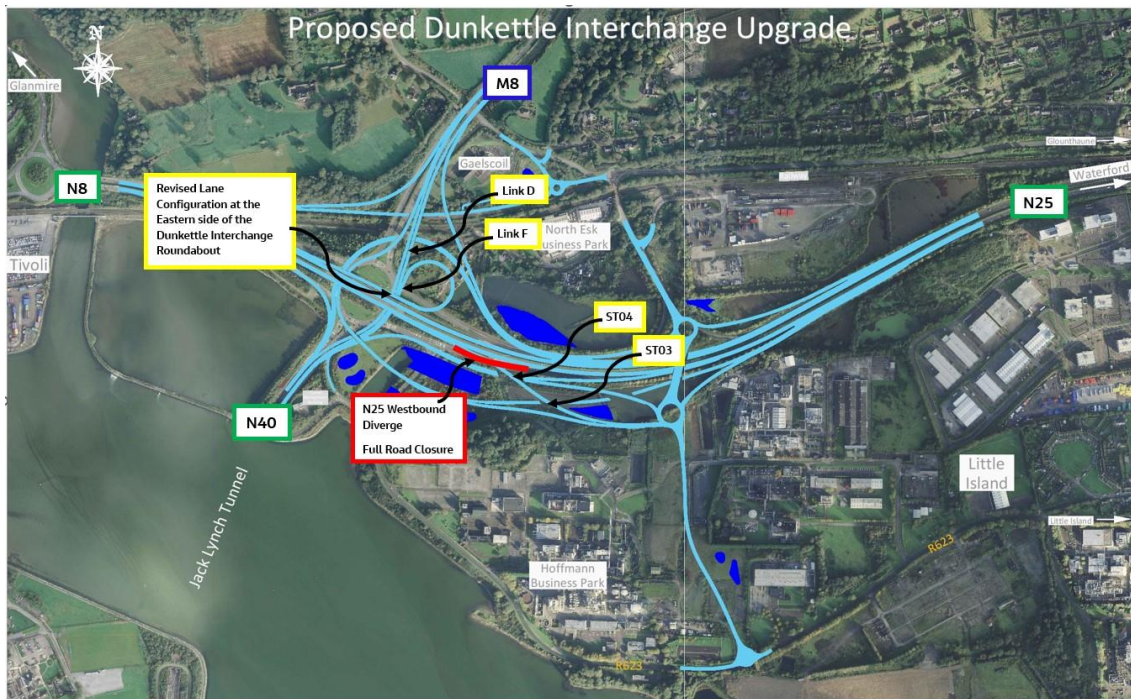
23rd June 2023



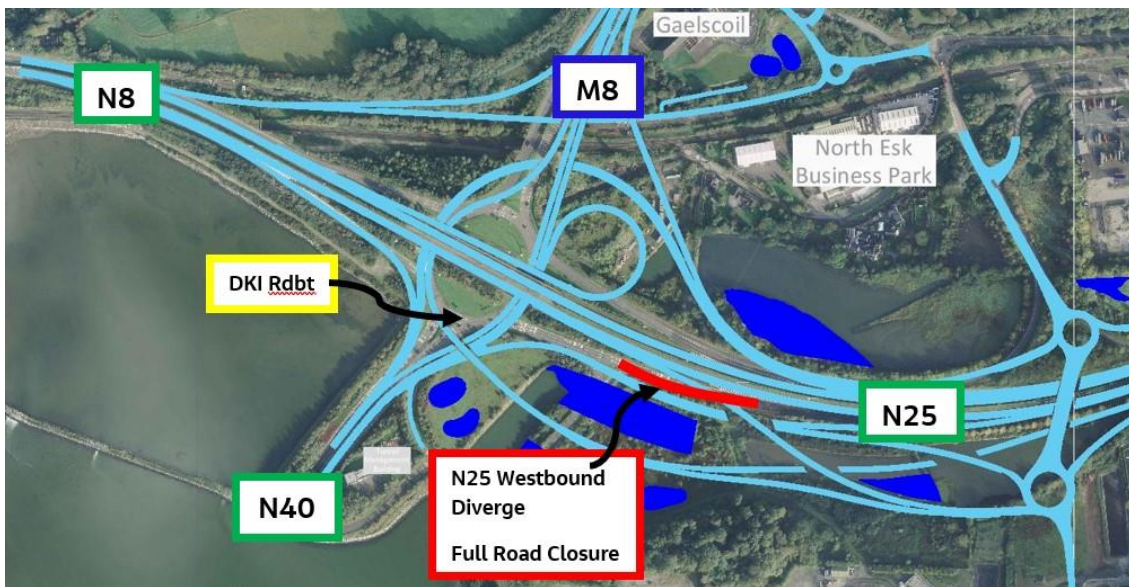
Twitter



Website

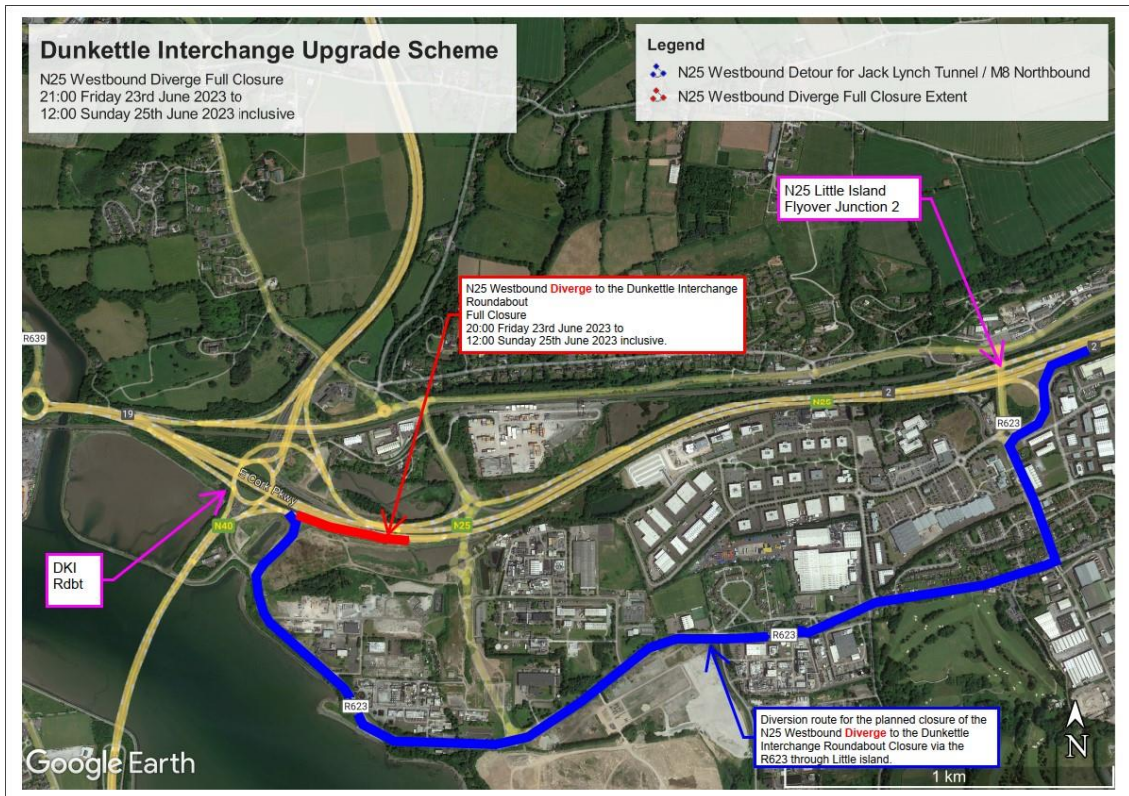


- Motorists are reminded that the N25 westbound diverge to the Interchange Roundabout (shown coloured red on the plan immediately hereunder) will be temporarily closed from 21:00 on Friday 23rd June 2023 to 12:00pm on Sunday 25th June 2023.



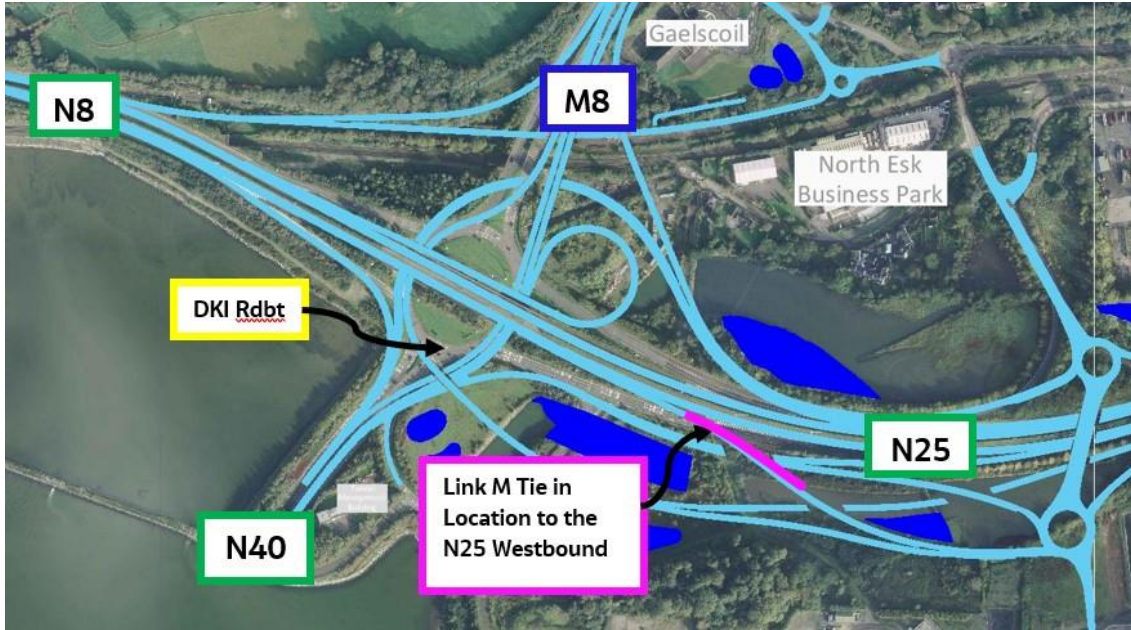
Location of the planned N25 Westbound Diverge to the Dunkettle Interchange Roundabout Closure

- N25 Westbound traffic wishing to access the Tunnel should use the R623 route through Little Island – see layout plan below.

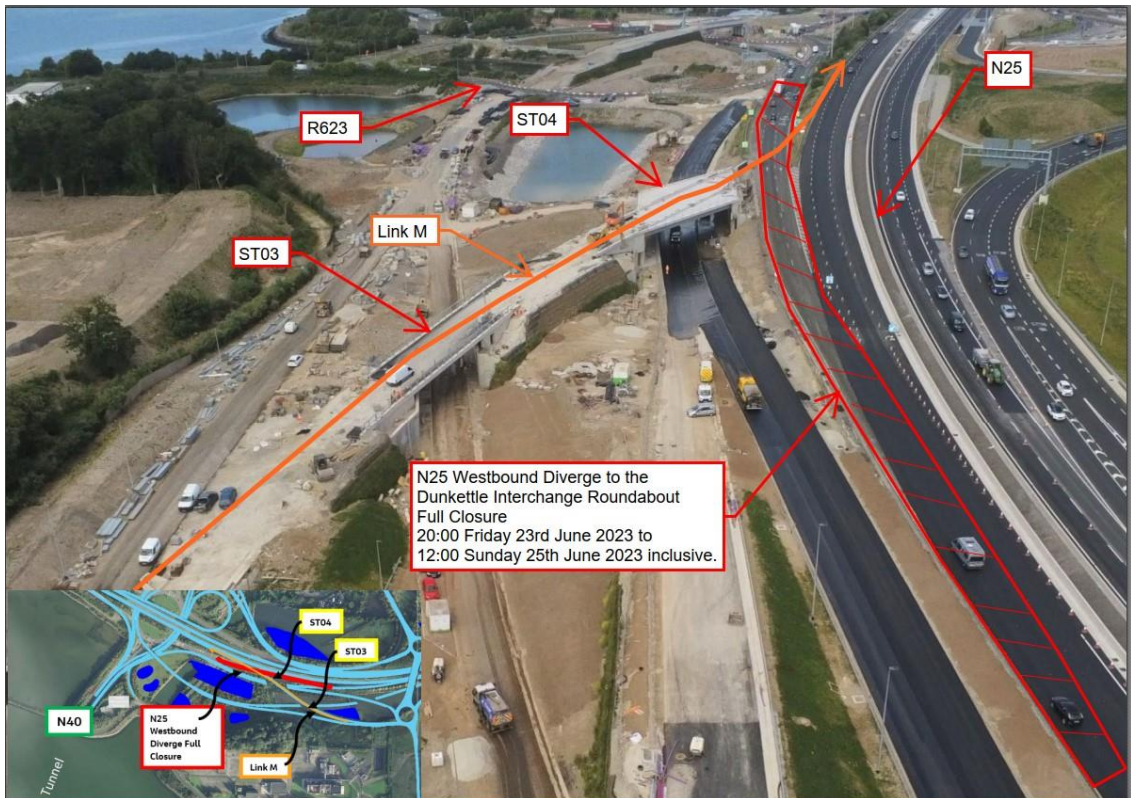


Diversion for N25 Westbound traffic wishing to access the Tunnel and the M8 during the closure.

- This temporary closure is required to facilitate completion of a tie-in from Link M to the N25 Westbound – see layout plan and photo below.



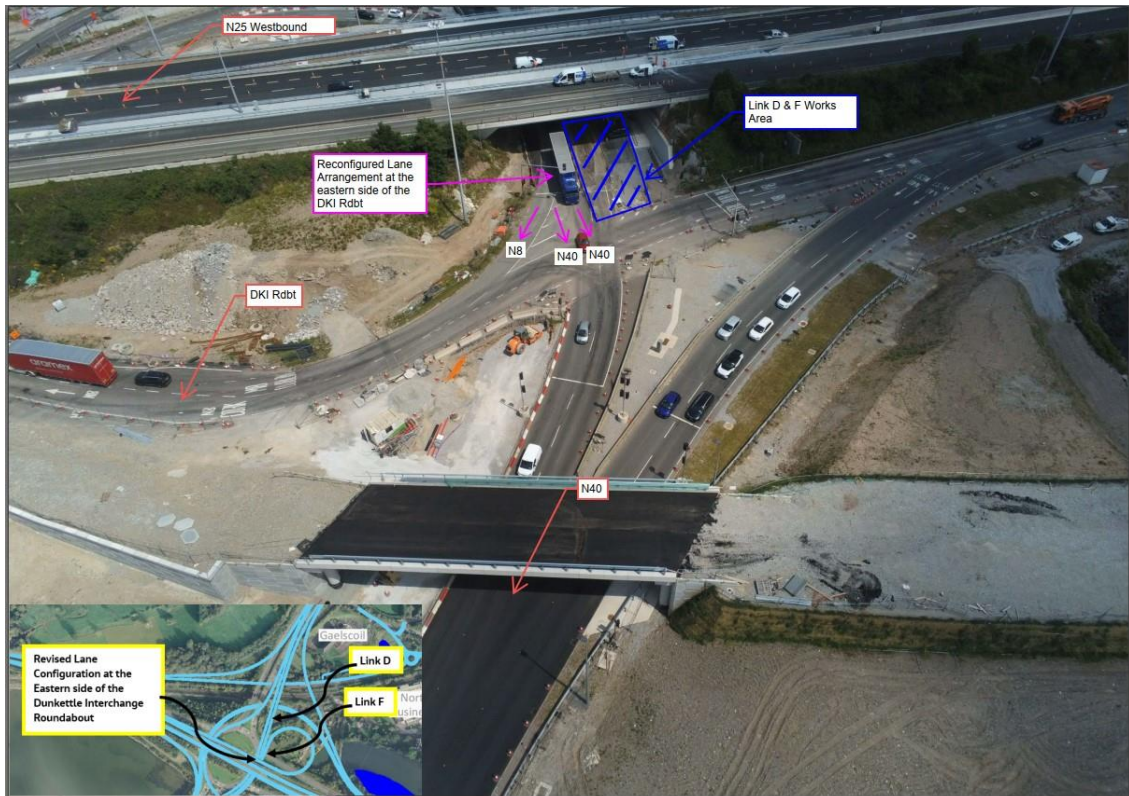
Link M Tie in to the N25 Westbound.



Link M Tie in to the N25 Westbound.

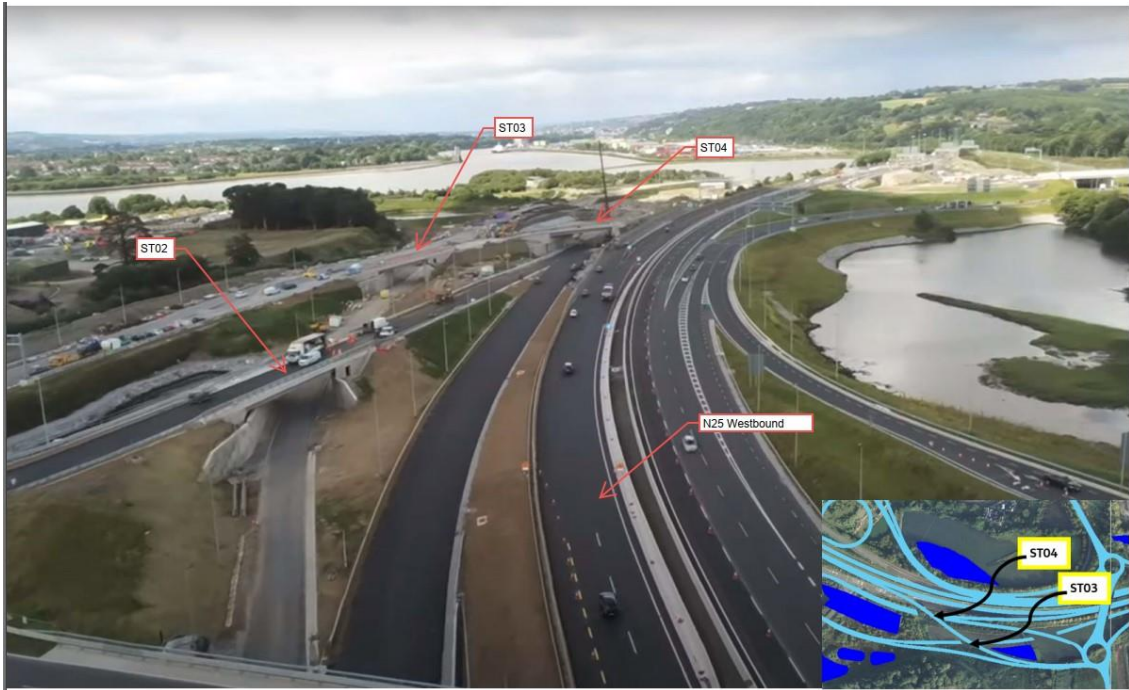
- The temporary tie – in works will be progressed on a 24 hour basis and the works are being carried out under weekend working in order to minimise disruption to traffic. Nevertheless, motorists should allow additional time for their journeys during peak times on Saturday 24th June 2023.

- The lane configuration at the eastern side of the Interchange Roundabout was altered this week – see photograph below. This alteration opens up the works area hatched in blue in the photograph below. Works will continue in this area next week in what will ultimately become the traffic lanes for Link D & Link F.



New lane configuration at the Interchange Roundabout allowing further online works to be progressed for Links D & F.

- Works are nearing completion at Structures ST03 & ST04 – see photograph below.



Ongoing works at Structures ST03 & ST04 alongside the N25 Westbound.

- It remains our intention to open a number of further road links in July 2023 – details to follow in future updates. The works currently ongoing are preparatory works for the upcoming link openings.

This week's Progress Update video shows the current status of Link K which is due to open over the summer months.



Dunkettle Live Traffic App



Click on the icon above to see the benefits of the Dunkettle Live App.



Dunkettle Live App: Download from [Apple App store](#) or from [Google Play store](#)

As always, if there are any queries or comments in relation to these works, please contact us at:

Phone: 1800 810077 (at any time), **Email:** roadconstruction@ccc-site.com.

Further information on the Dunkettle Scheme can be accessed www.dunkettle.ie.

Real time traffic information can be accessed via www.dunkettletraffic.ie or on the Dunkettle Live App ([Apple App store](#) and [Google Play store](#)).

New subscribers to the newsletter can register: www.dunkettle.ie/newslettersignup



[More at www.Dunkettle.ie](http://www.Dunkettle.ie)



Your email address is on a list that we use to keep you informed on the progress on the N40 and Dunkettle Interchange works.

Want to change how you receive these emails?

You can [update your preferences](#) or [unsubscribe from this list](#).
