

Dunkettle Progress Update

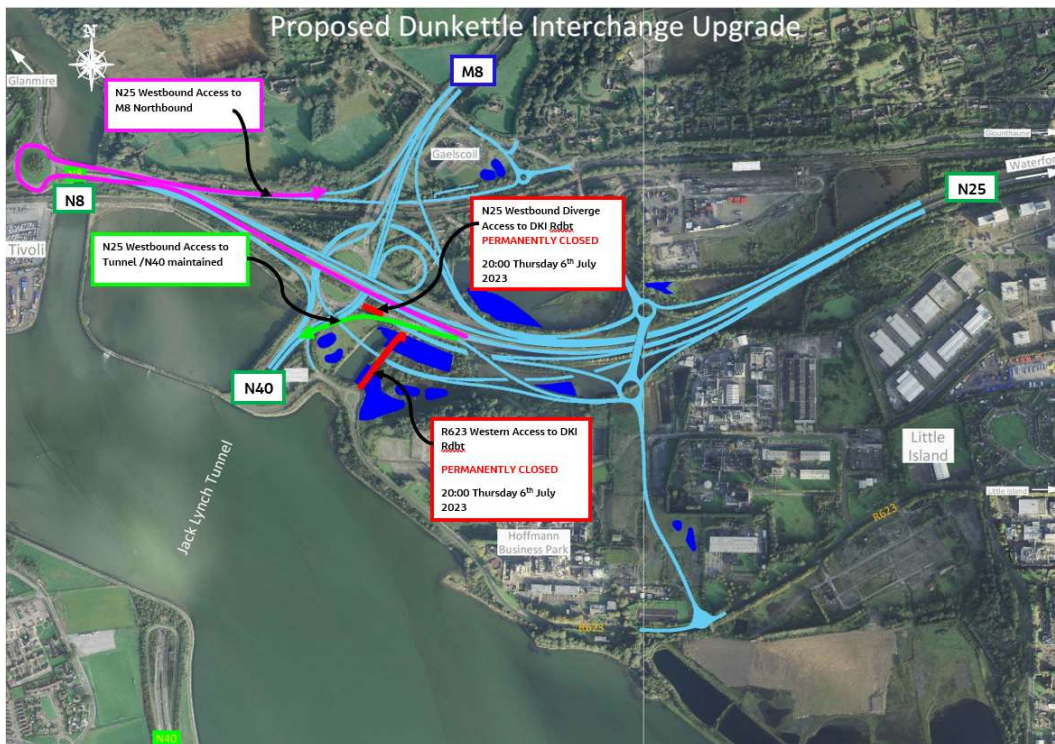
06th July 2023



Twitter

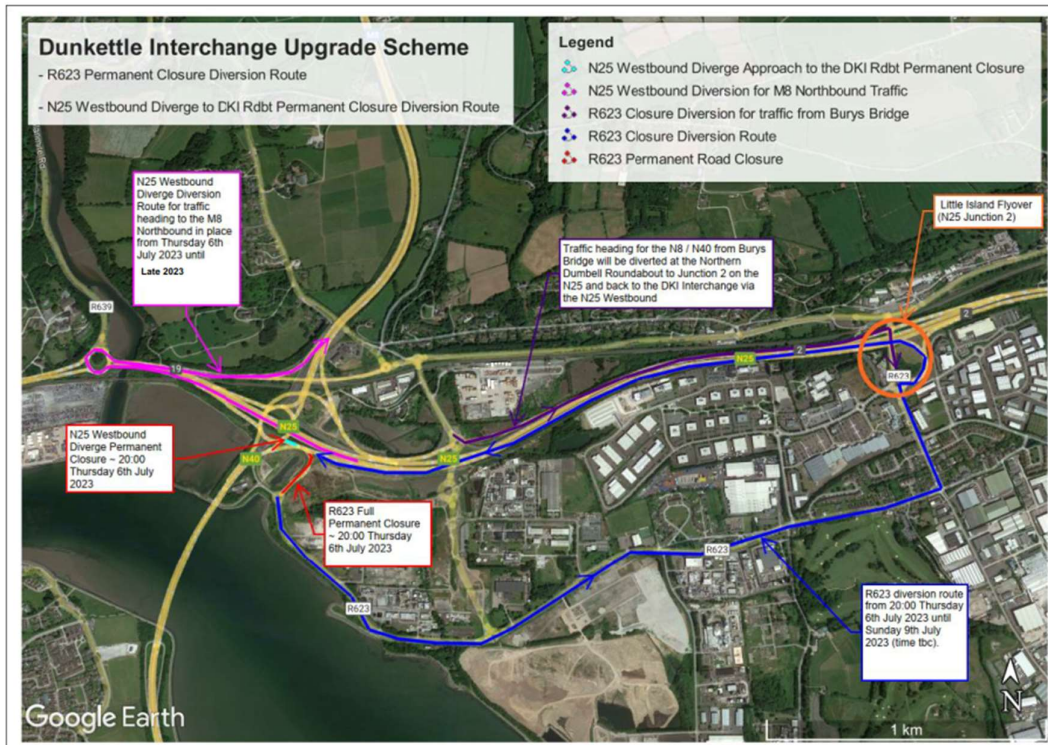


Website



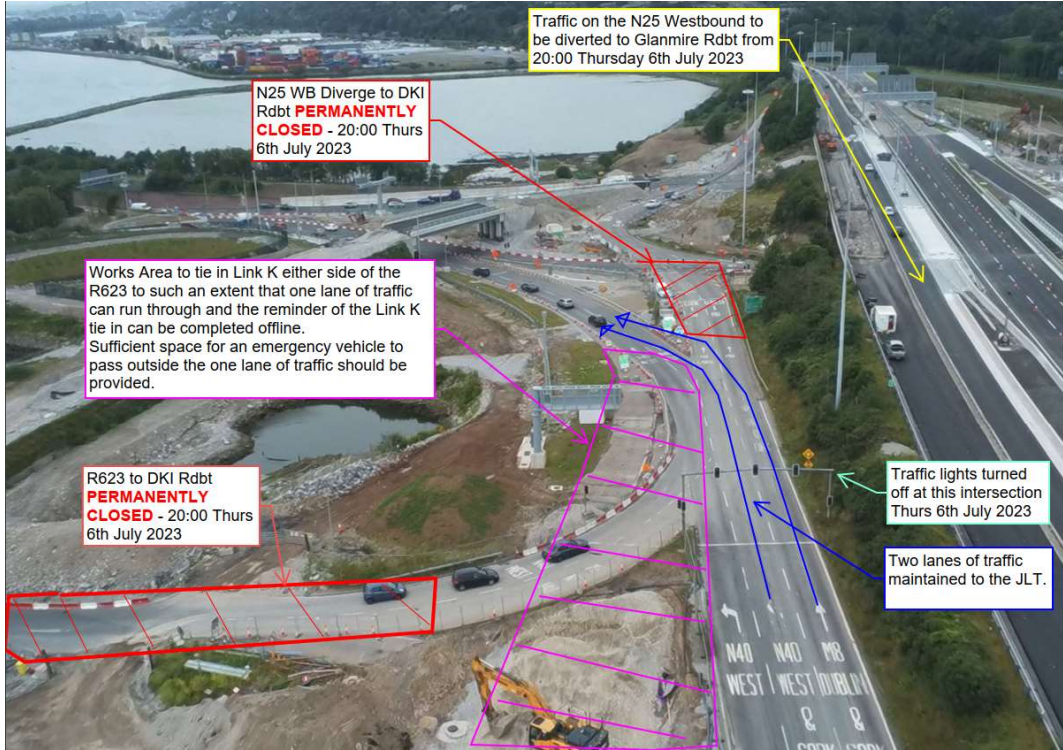
- Motorists are reminded that the R623 western exit from Little Island will close permanently at approximately 8pm today, Thursday the 6th of July 2023. The closure point is shown coloured red on the layout plan above. The alternative route pending the opening of the new

links on Sunday the 9th July will be via the Little Island Interchange, junction 2 shown circled in the layout plan below.

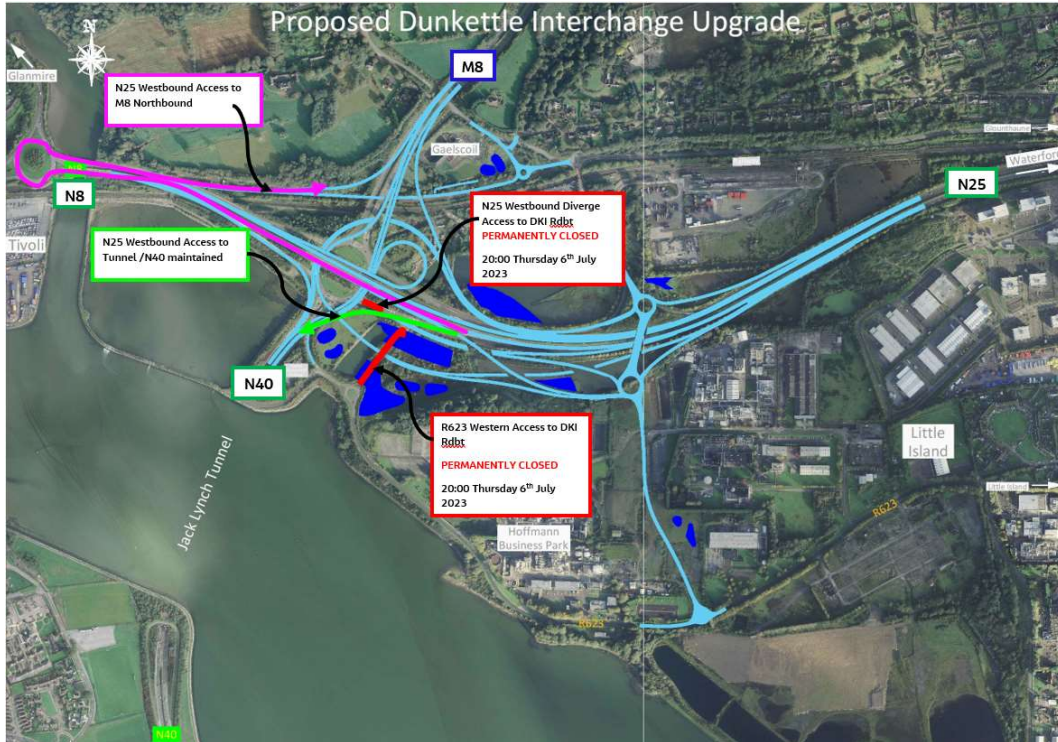


R623 & N25 Westbound Diverge Access to DK1 Rdbt - DIVERSION ROUTE
- 20:00 THURSDAY 6th July to 10:00 SUNDAY 9th 2023

- The section of the N25 Westbound diverge providing access to the Interchange Roundabout itself will also close permanently at 8pm today, Thursday the 6th of July 2023. The alternative route in this case for traffic wishing to access the M8 Northbound will be via the Tivoli Roundabout. The closure area (shown coloured red) and the alternative route (shown coloured purple) are shown in the photograph and layout plan below.



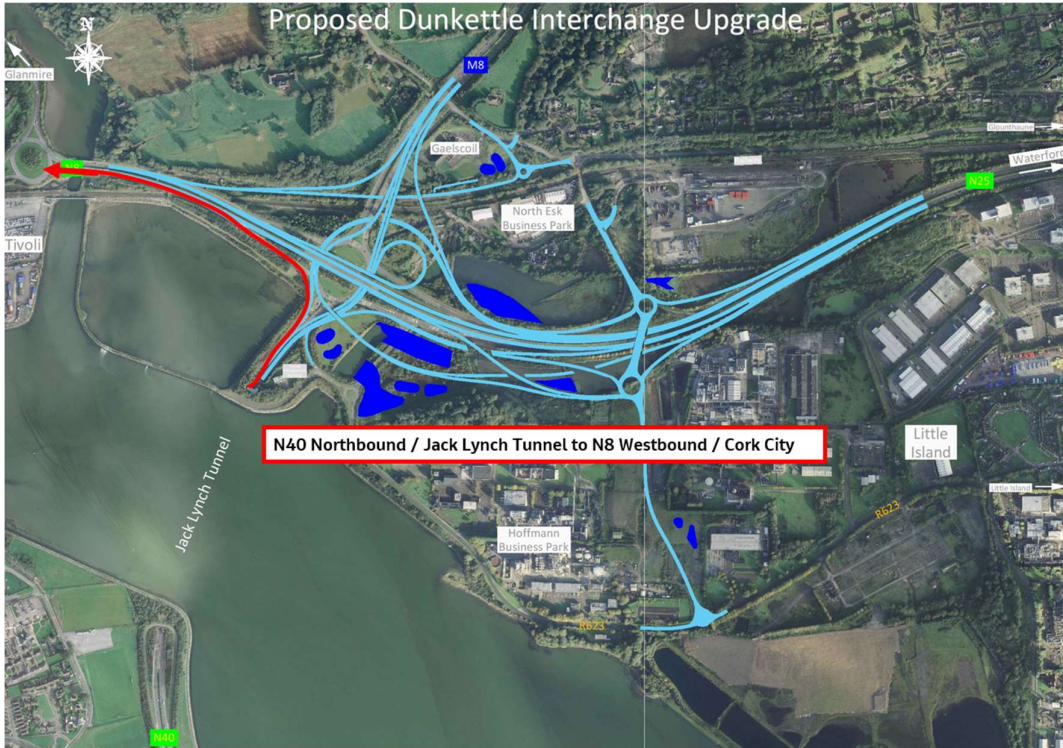
R623 & N25 Westbound Diverge Access to DKI Rdbt - PERMANENT CLOSURE - 20:00 THURSDAY 6th July 2023



N25 Westbound diverge access to DK1 Rdbt closure - Diversion route to M8 Northbound

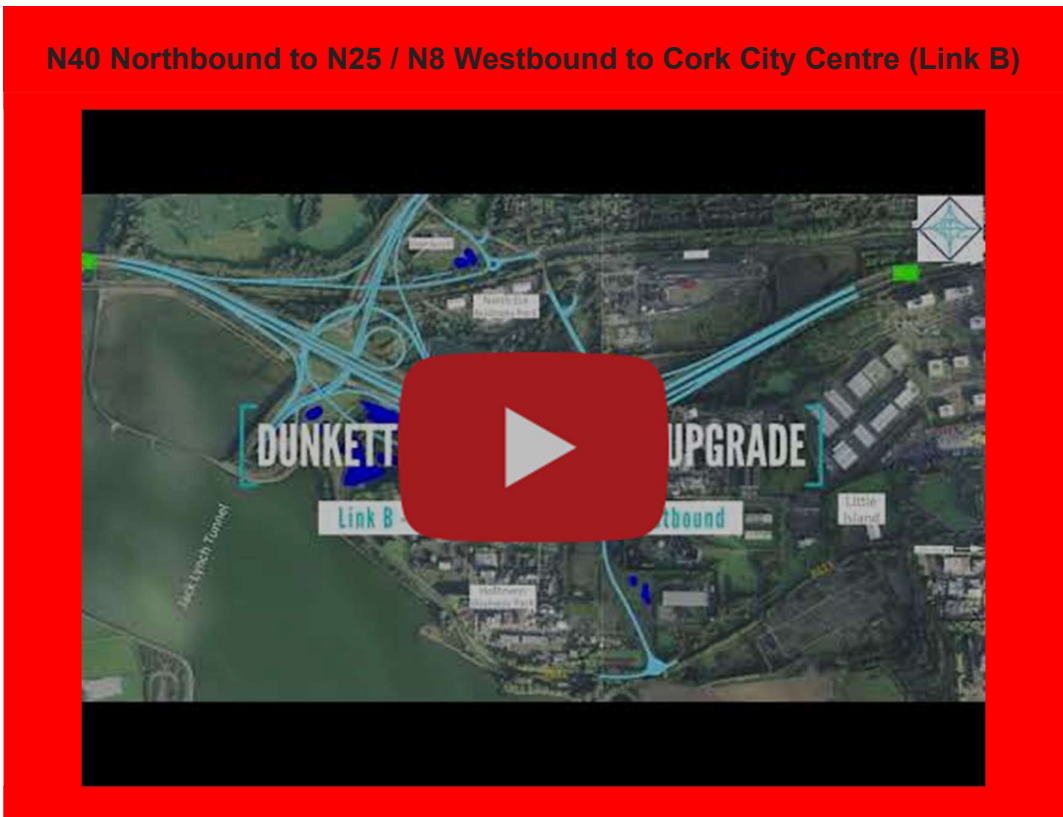
- Works at both closure points will continue on a 24-hour basis from 8pm this evening with the aim of ensuring that the area is ready to reopen as part of Link K on the morning of Sunday the 9th July 2023.

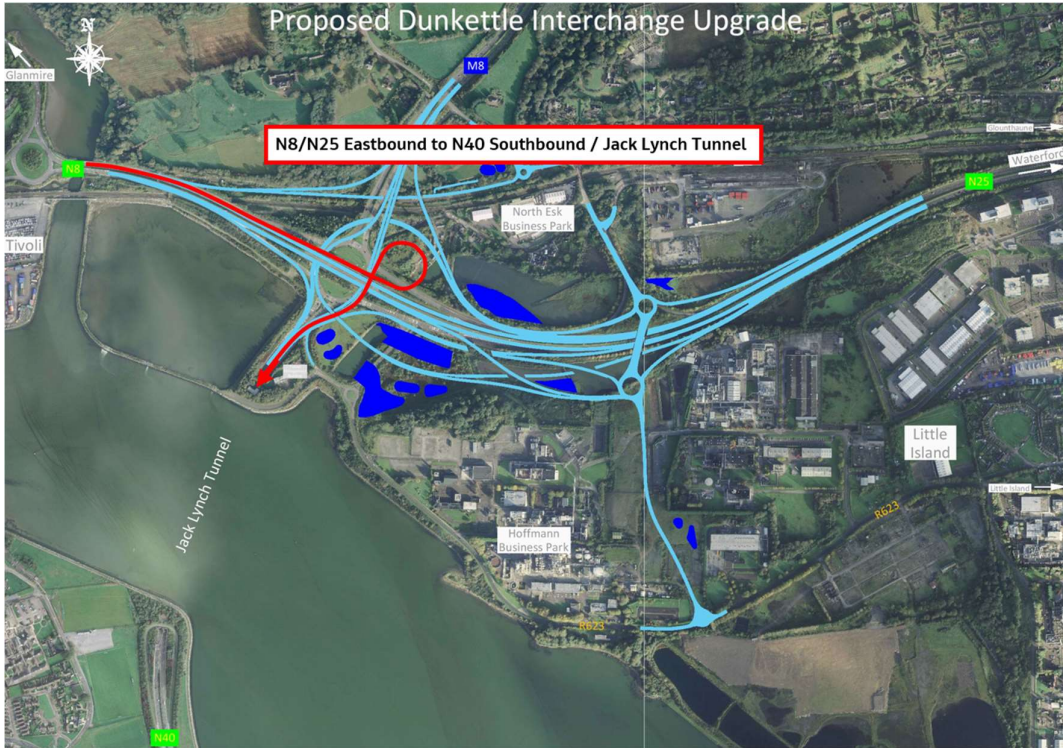
- Traffic routes which will change as a result of the opening on Sunday and are summarised as follows:
- N40 Northbound to N25 / N8 Westbound to Cork City Centre (Link B) - see layout plan & video link below.
- N8, Lower Glanmire Road / N25 Eastbound to the Tunnel (Link F) - see layout plan & video link below.
- M8 Southbound to the Tunnel (Link D) - see layout plan & video link below.
- M8 Southbound to N25 / N8 Westbound, Cork City Centre (Link M) - see layout plan & video link below.
- N25 Westbound to the Tunnel (Link K) - see layout plan & video link below.
- N25 Westbound to M8 Northbound - see layout plan & video link below.
- Little Island to the Tunnel (Link L) - see layout plan & video link below.
- N25 Westbound to Little Island (West) (Link J) - see layout plan & video link below
- Little Island to N8 Westbound, Cork City Centre, Lower Glanmire Road (Link M) - see layout plan & video link below.
- Little Island to M8 Northbound (Link M) - see layout plan & video link below.



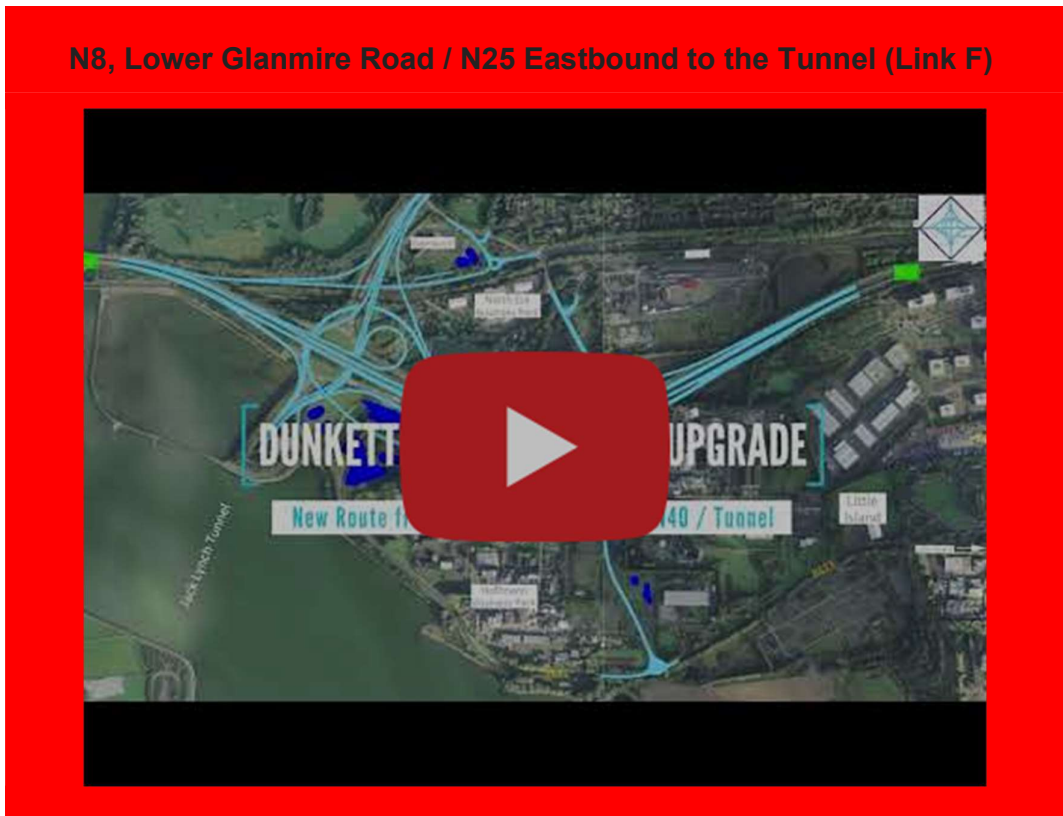
N40 Northbound to N25 / N8 Westbound to Cork City Centre (Link B)

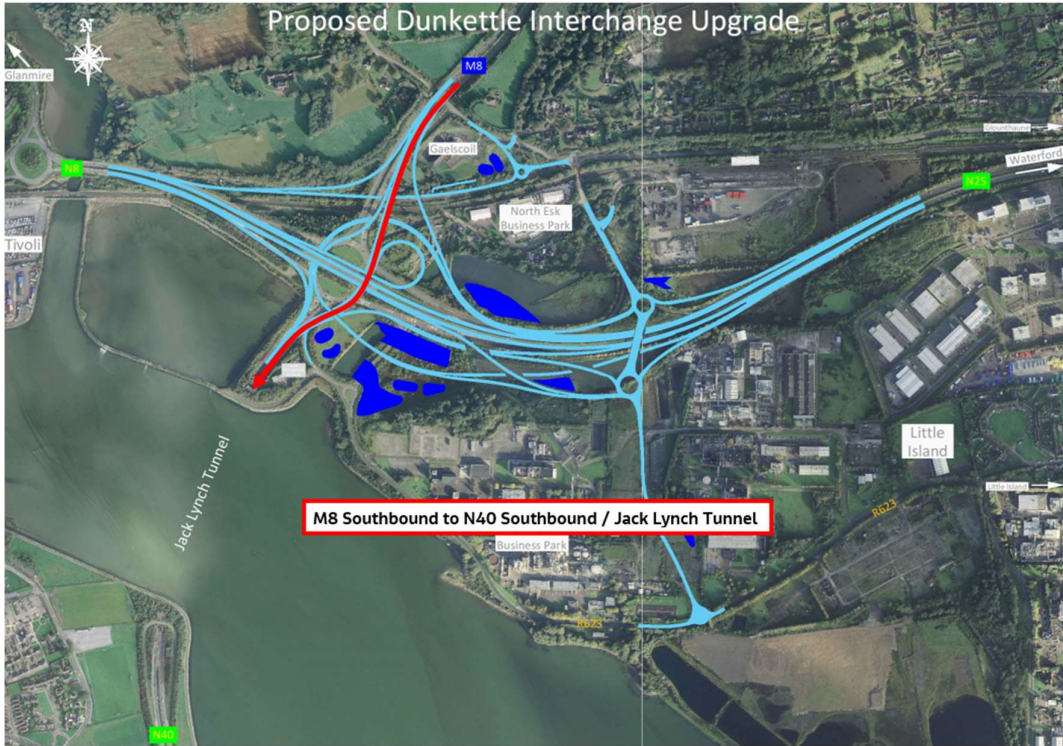
N40 Northbound to N25 / N8 Westbound to Cork City Centre (Link B)





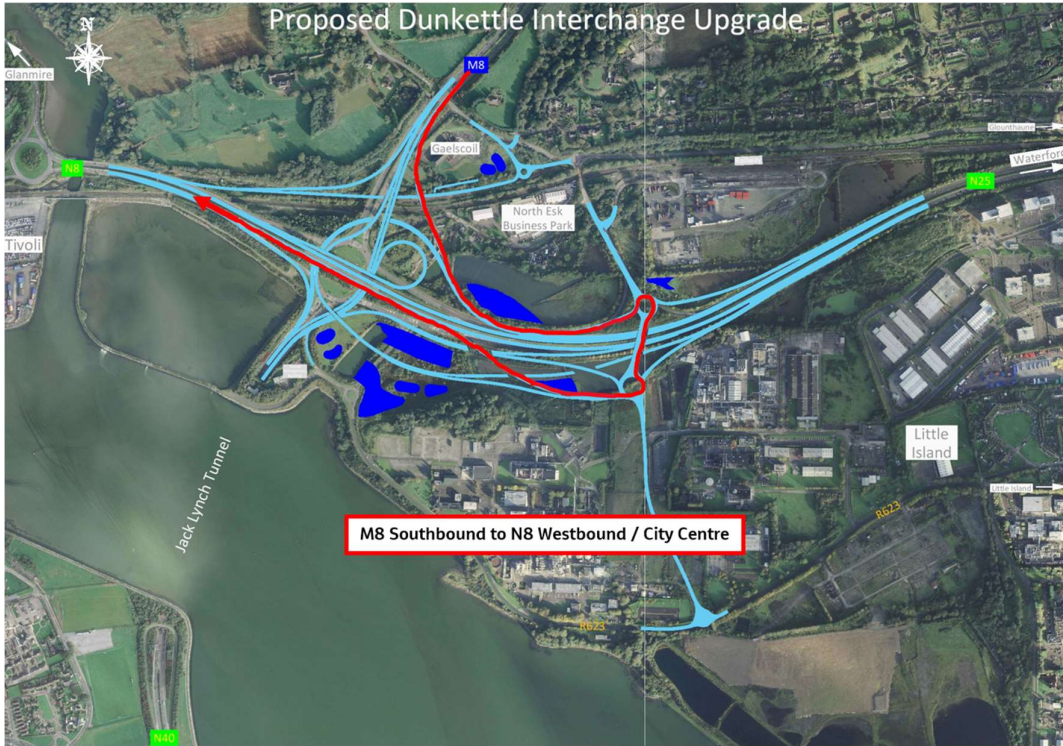
N8, Lower Glanmire Road / N25 Eastbound to the Tunnel (Link F)





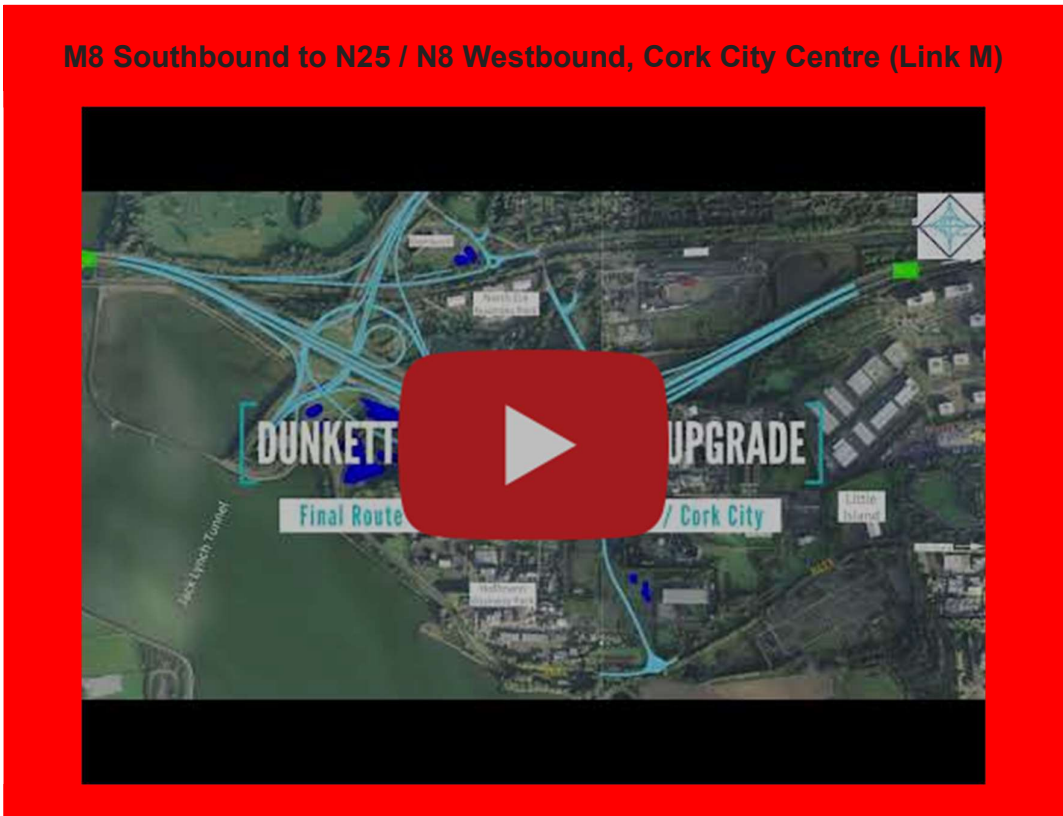
M8 Southbound to the Tunnel (Link D)

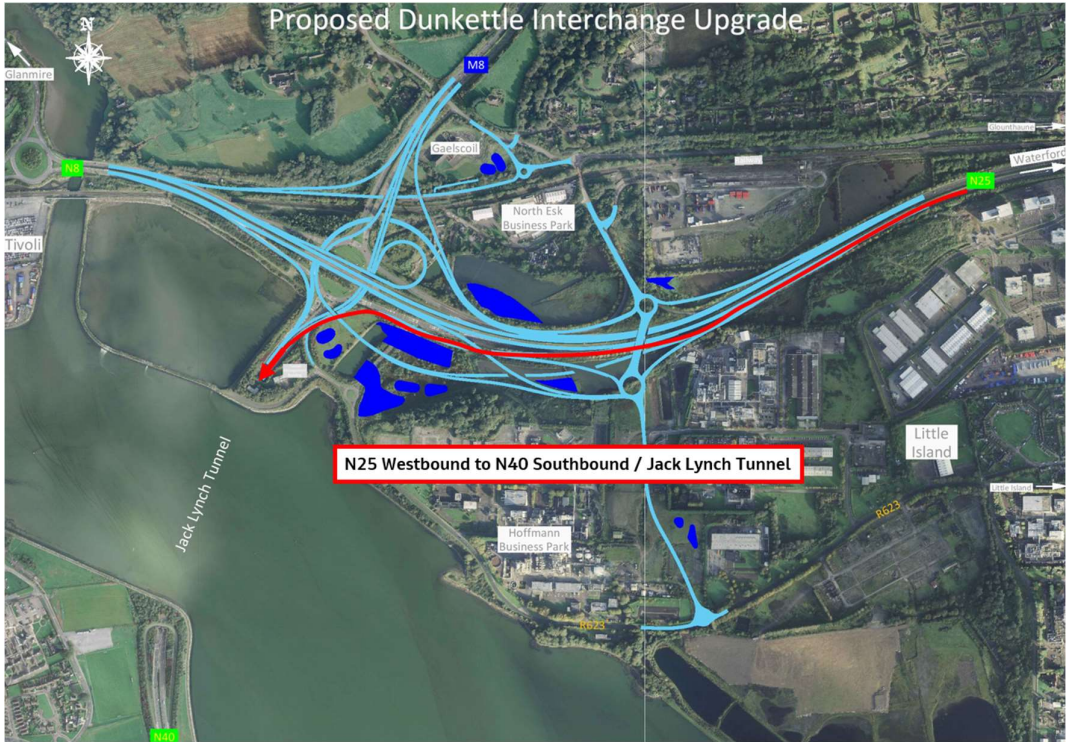




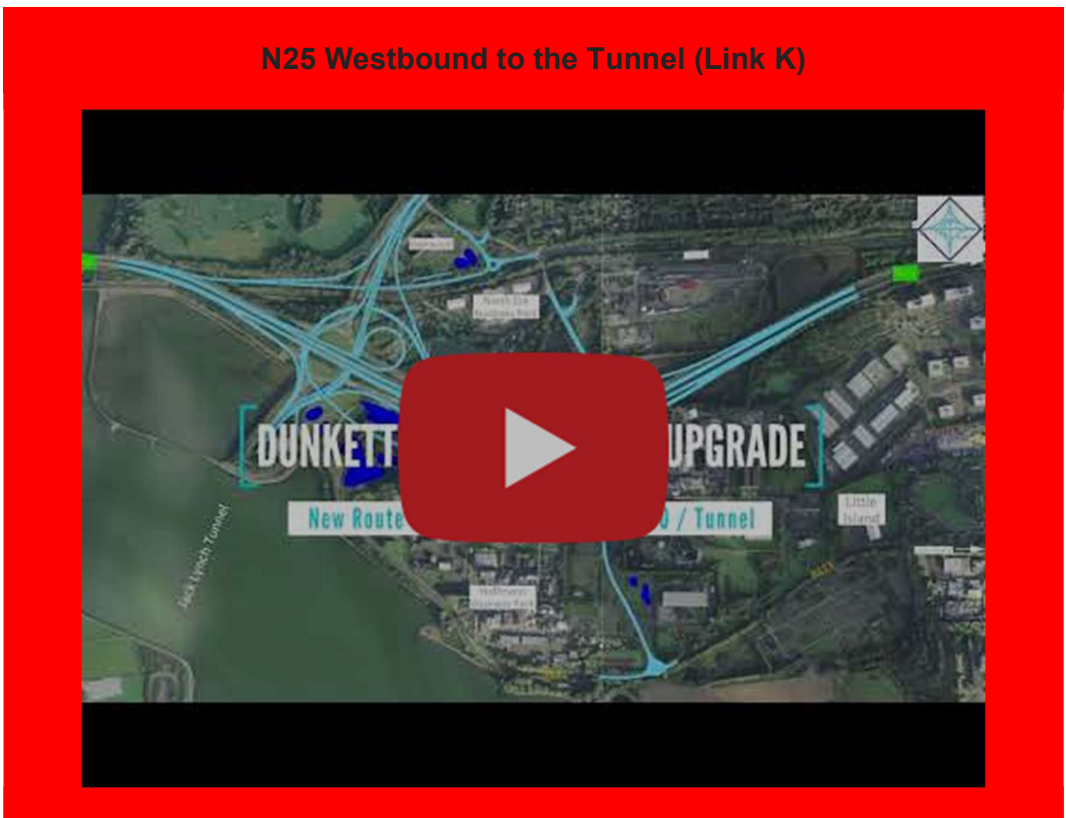
M8 Southbound to N25 / N8 Westbound, Cork City Centre (Link M)

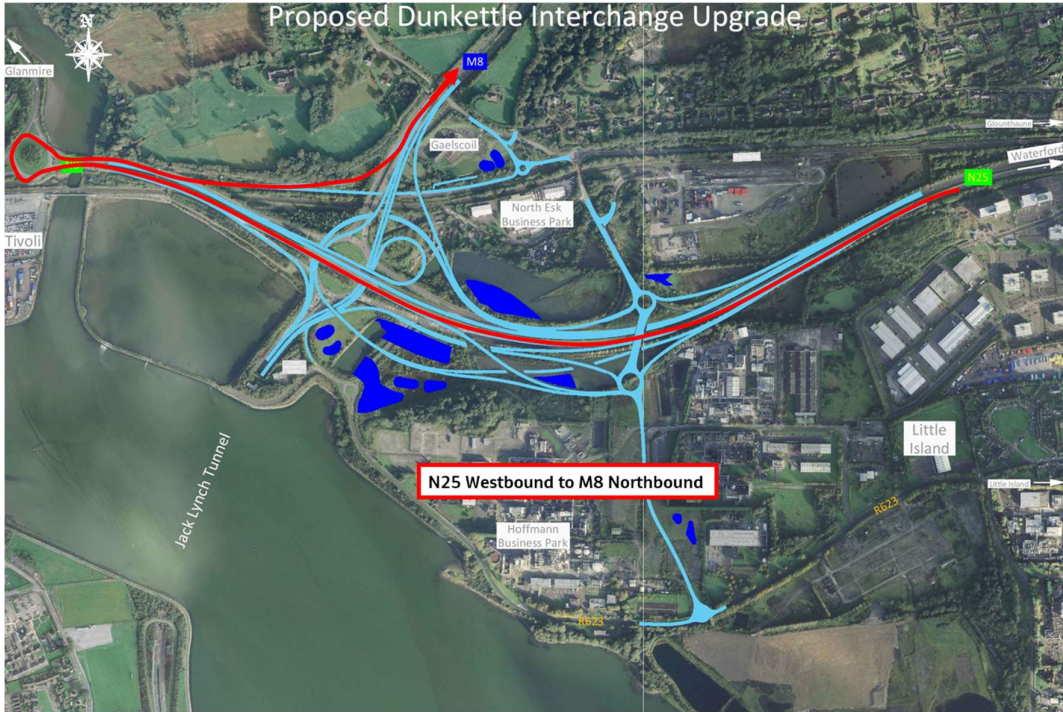
M8 Southbound to N25 / N8 Westbound, Cork City Centre (Link M)



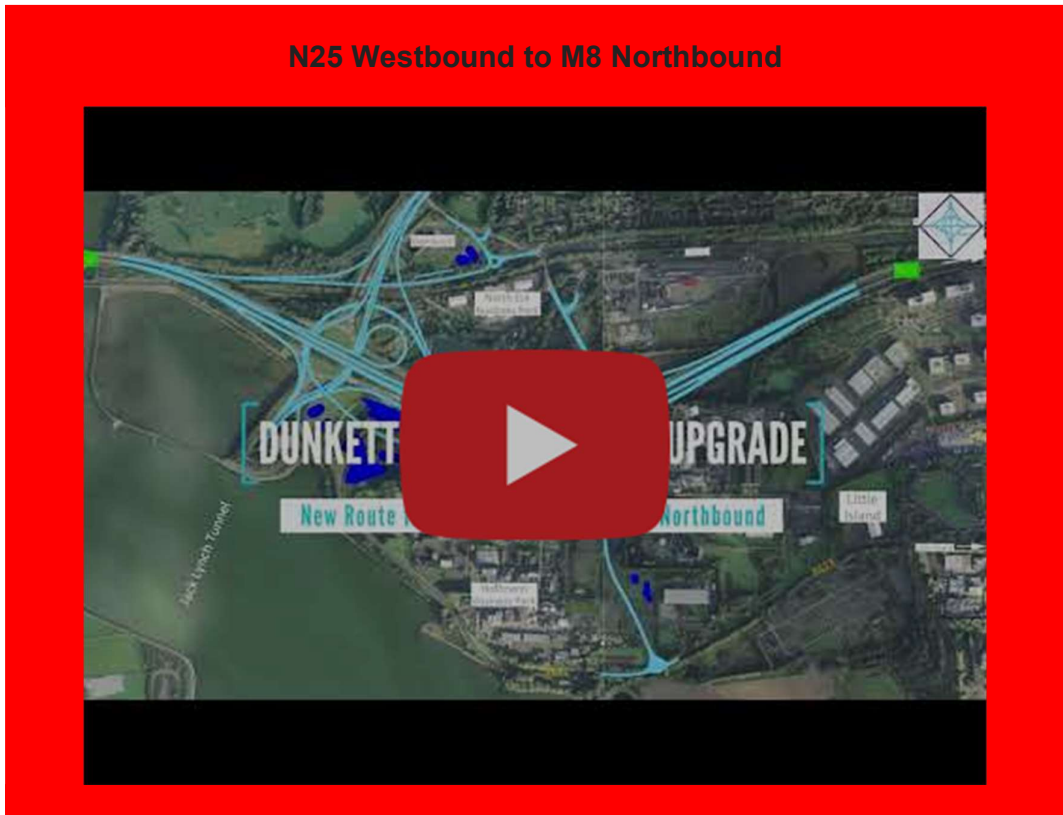


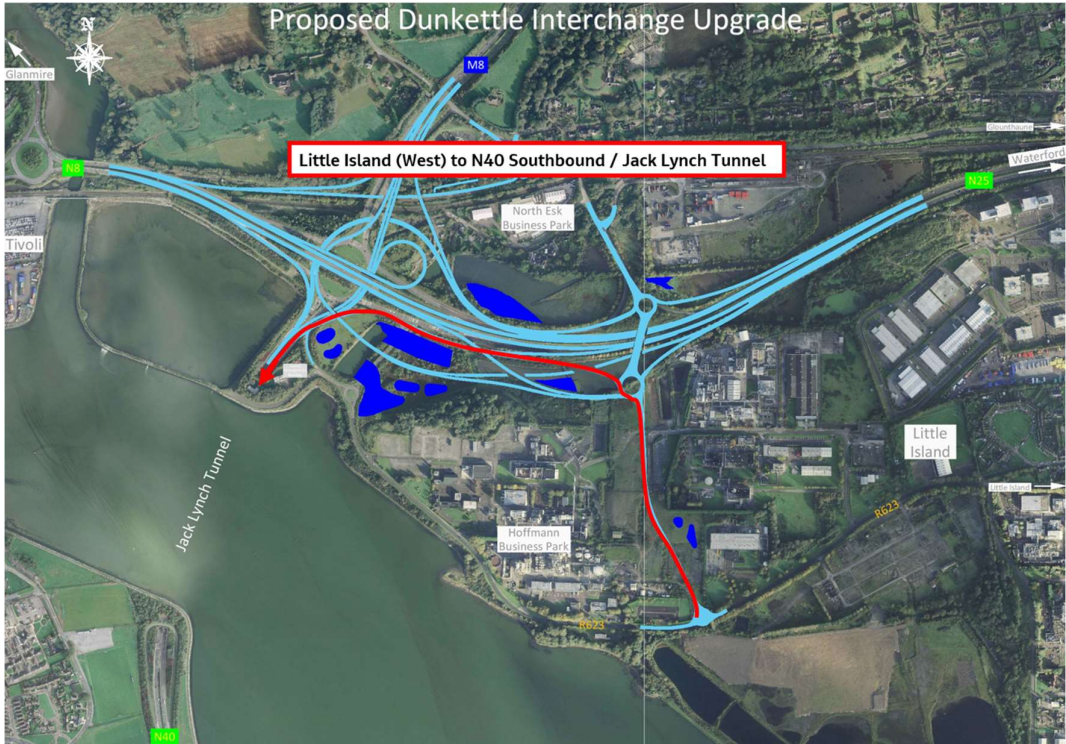
N25 Westbound to the Tunnel (Link K)





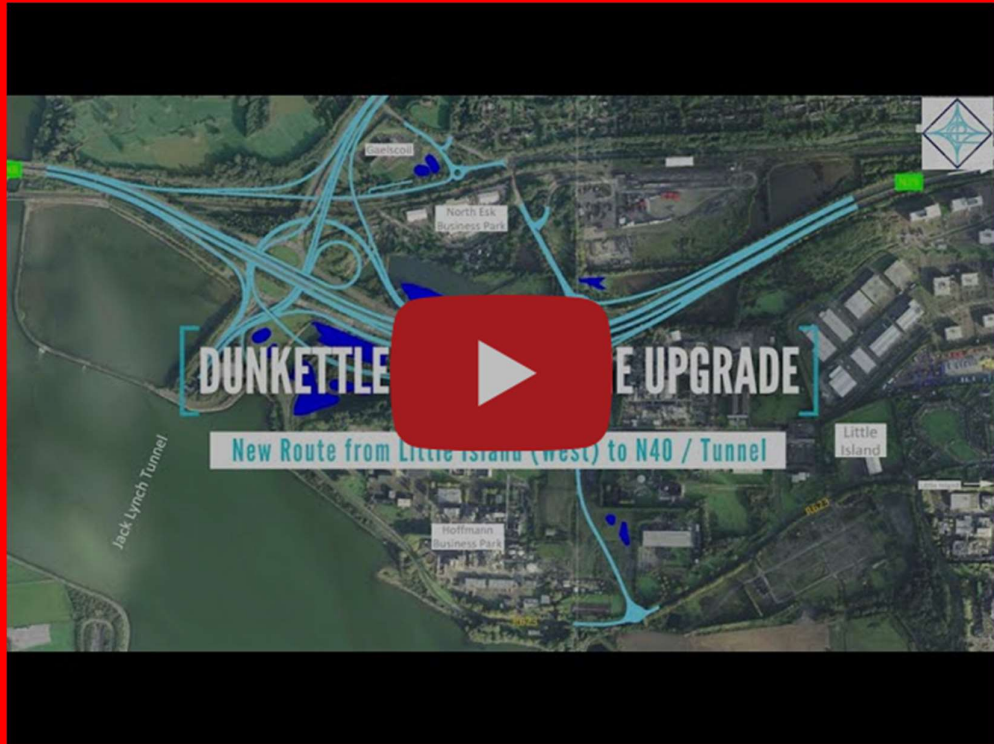
N25 Westbound to M8 Northbound

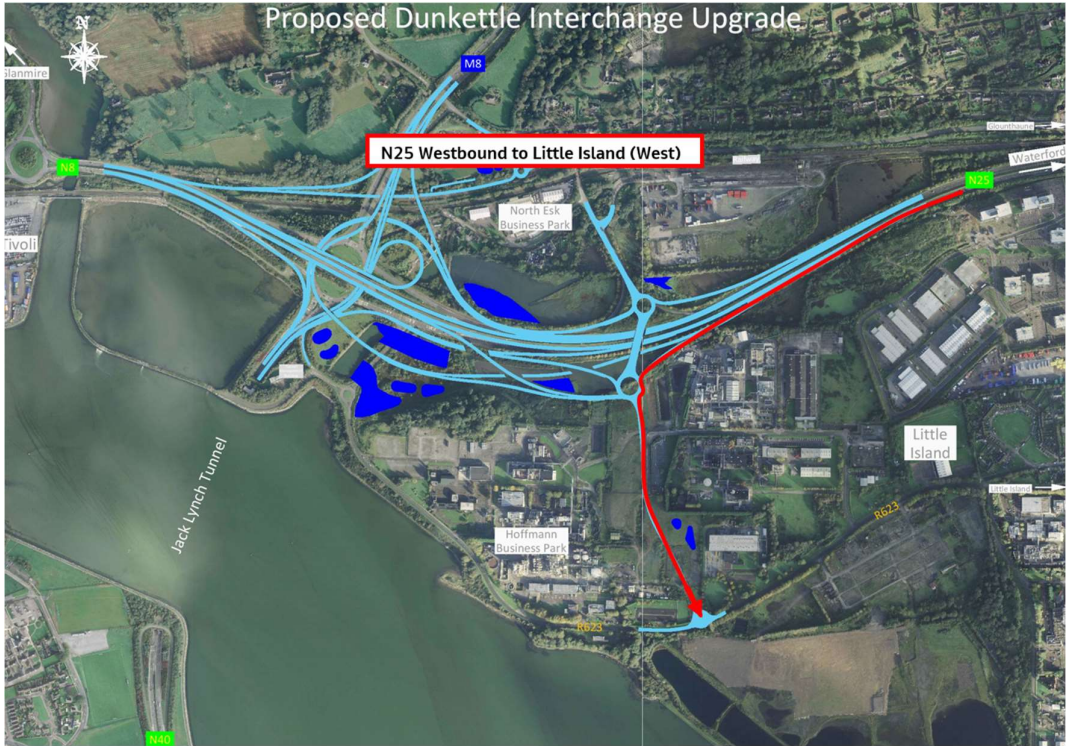




Little Island to the Tunnel (Link L)

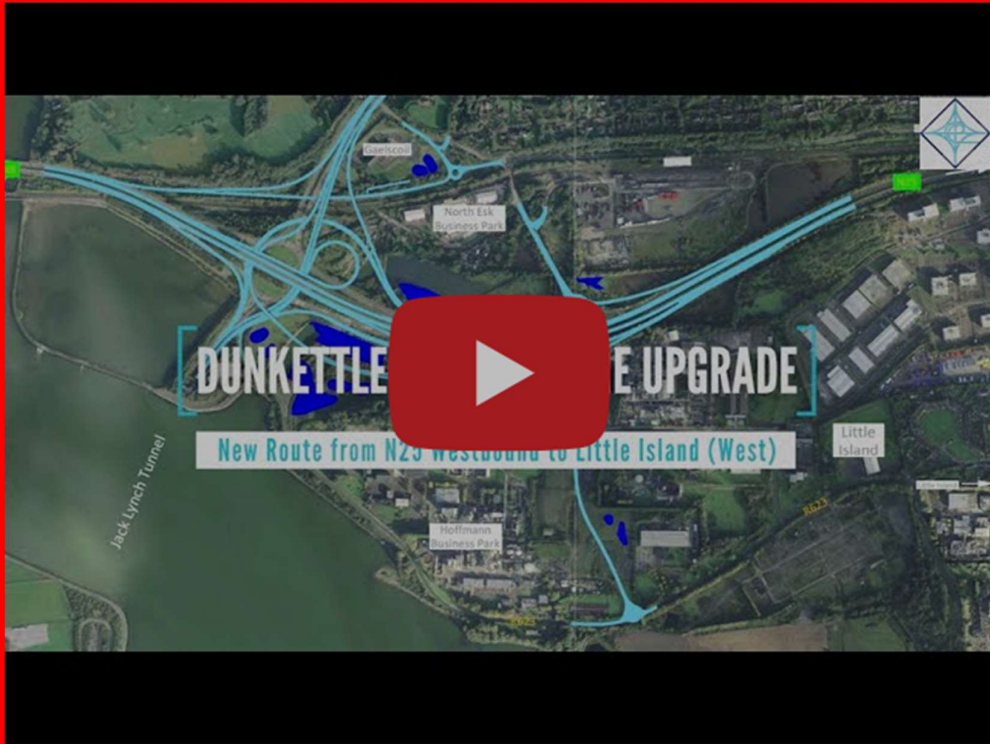
Little Island to the Tunnel (Link L)

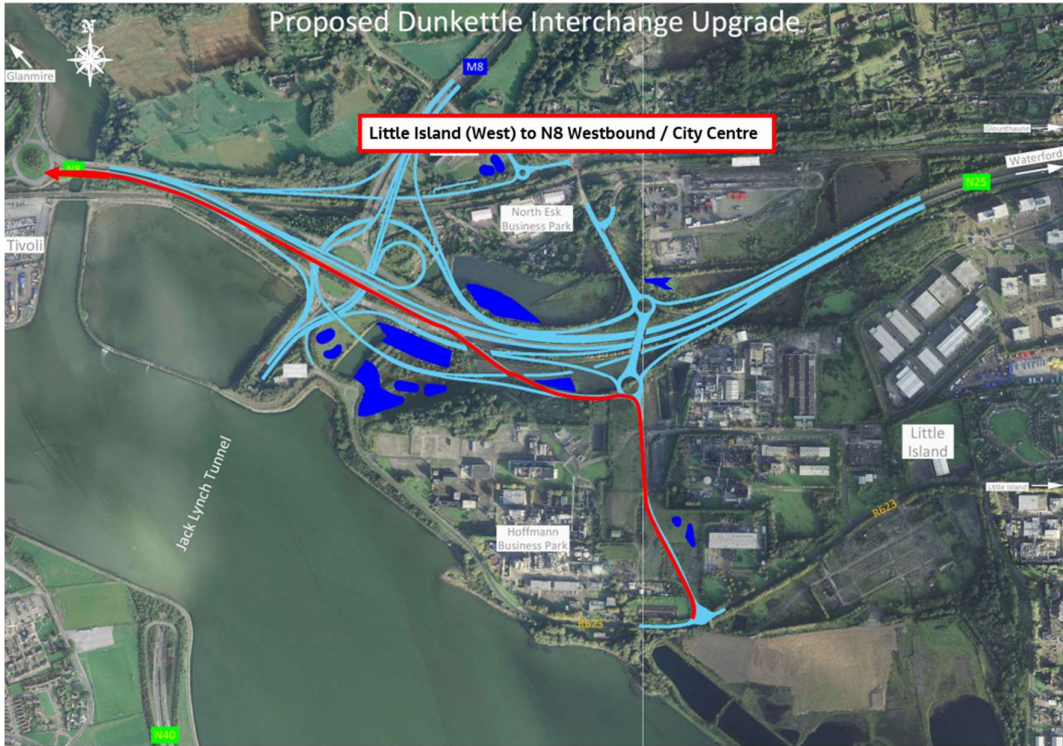




N25 Westbound to Little Island (West) (Link J)

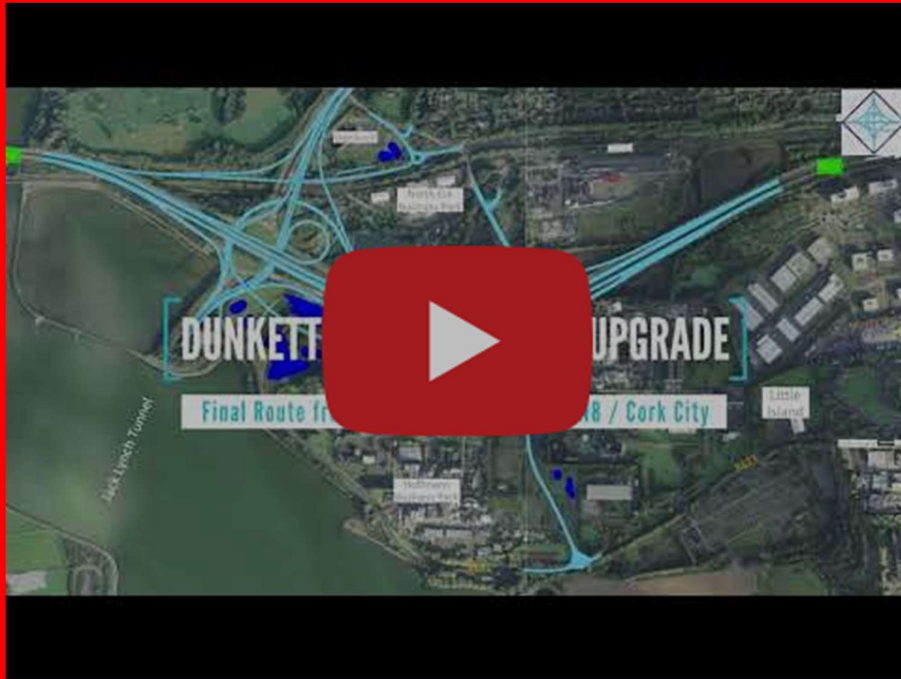
N25 Westbound to Little Island (West) (Link J)

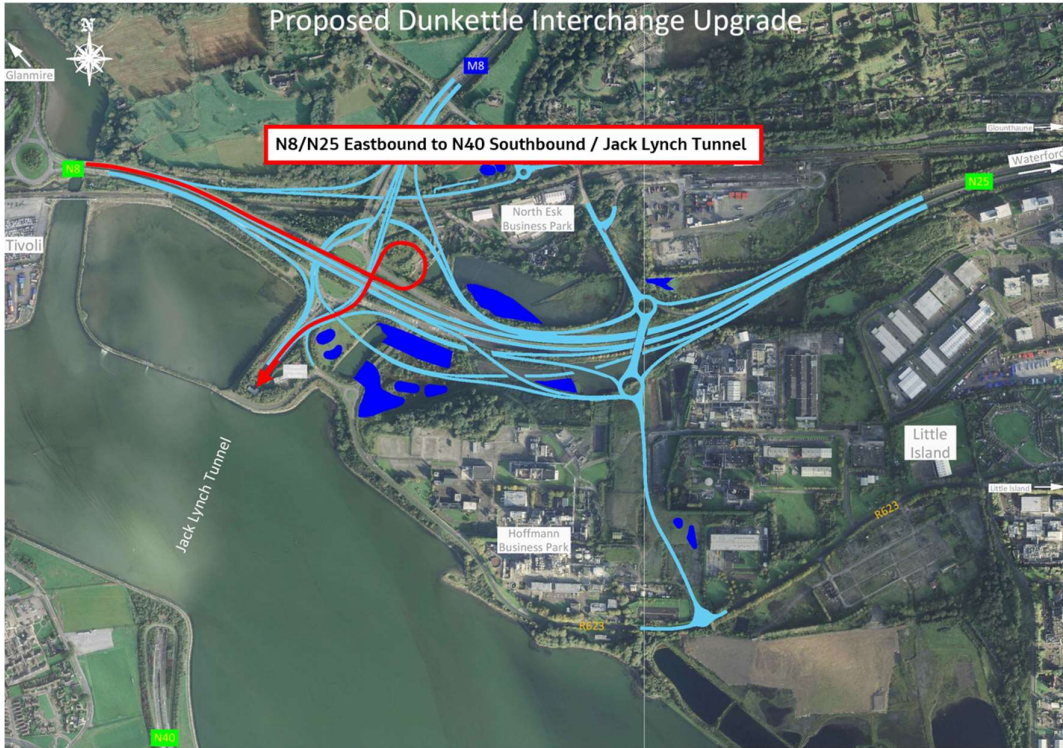




Little Island to N8 Westbound, Cork City Centre, Lower Glanmire Road
(Link M)

Little Island to N8 Westbound, Cork City Centre, Lower Glanmire Road (Link M)





Little Island to M8 Northbound (Link M)



- The enabling works leading up to the Link Opening Event will inevitably lead to some disruption to traffic at peak times. Motorists are asked to plan their journeys in advance while these enabling works are taking place and to allow extra time for journeys through the Dunkettle.

- As always, please contact us at any time if you have any queries/comments/concerns in relation to the ongoing works.



Dunkettle Live Traffic App



Click on the icon above to see the benefits of the Dunkettle Live App.



Dunkettle Live App: Download from [Apple App store](#) or from [Google Play store](#)

As always, if there are any queries or comments in relation to these works, please contact us at:
Phone: 1800 810077 (at any time), **Email:** roadconstruction@ccc-site.com.



Further information on the Dunkettle Scheme can be accessed www.dunkettle.ie.

Real time traffic information can be accessed via www.dunkettletraffic.ie or on the Dunkettle Live App ([Apple App store](#) and [Google Play store](#)).

New subscribers to the newsletter can register: www.dunkettle.ie/newslettersignup



[More at www.Dunkettle.ie](http://www.Dunkettle.ie)



Your email address is on a list that we use to keep you informed on the progress on the N40 and Dunkettle Interchange works.

Want to change how you receive these emails?
You can [update your preferences](#) or [unsubscribe from this list](#).
