

# Dunkettle Progress Update

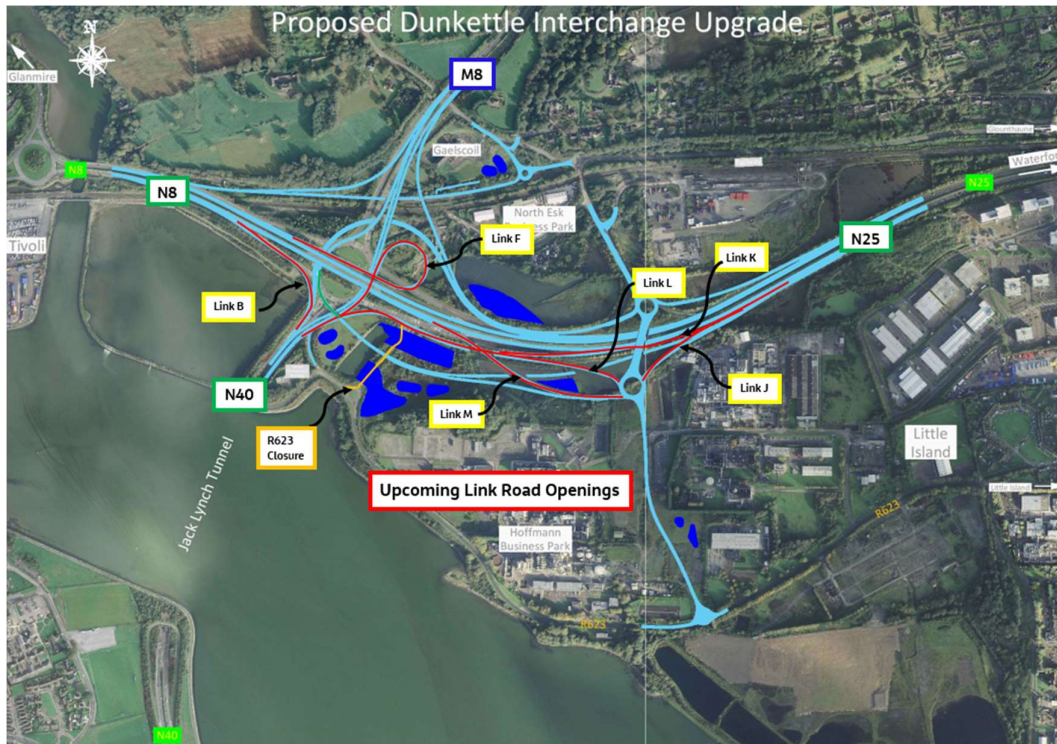
## 07th July 2023



Twitter

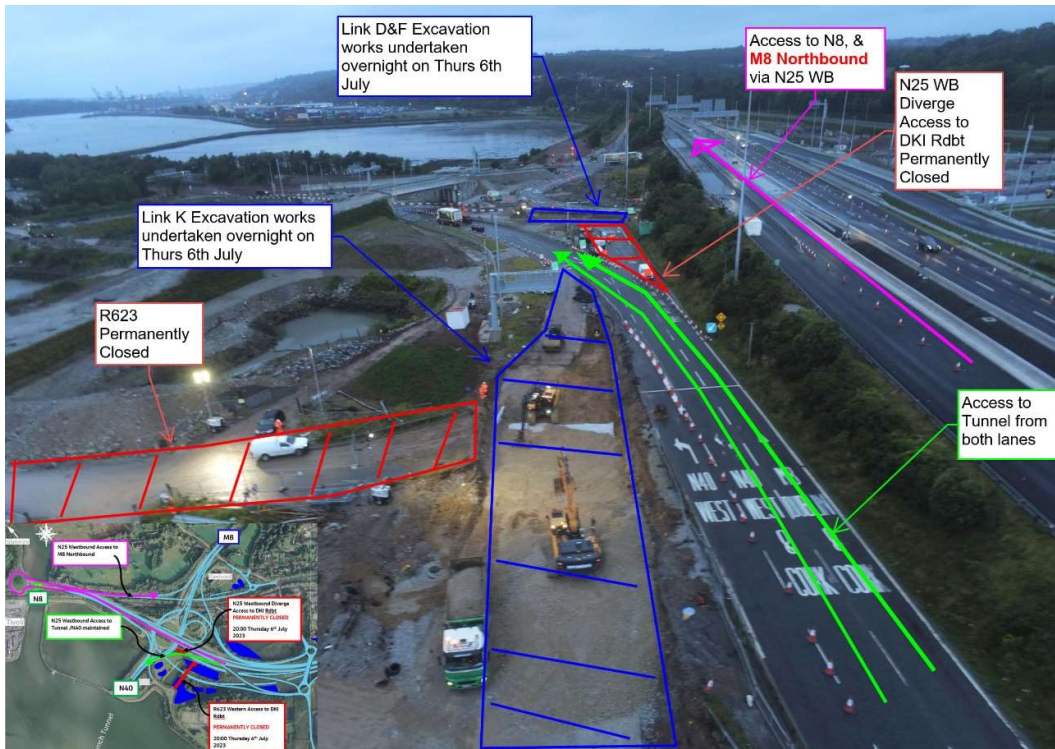


Website



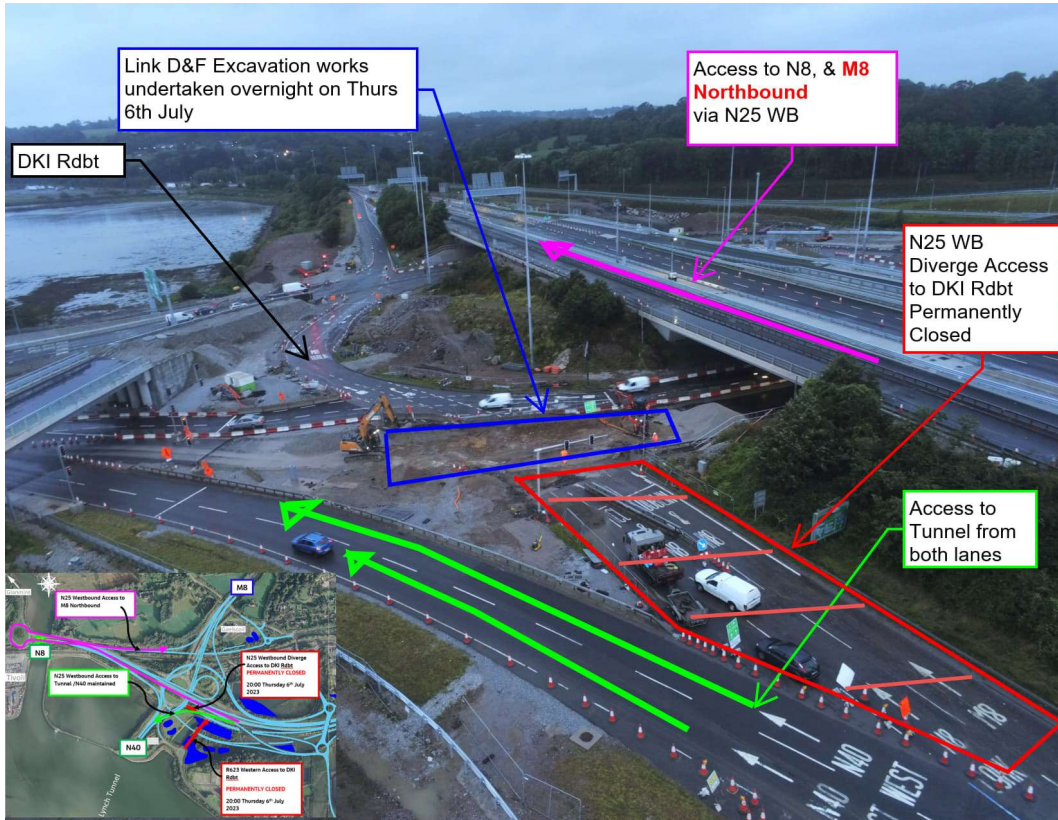
- The R623 exit from Little Island closed at 8pm on Thursday the 6th July 2023 as planned. Excavation and initial surfacing works got underway immediately in this area, which will ultimately become part

of the new Link K (the route for N25 Westbound traffic wishing to access the Tunnel) - see photograph below.



Ongoing Excavation works at Link K

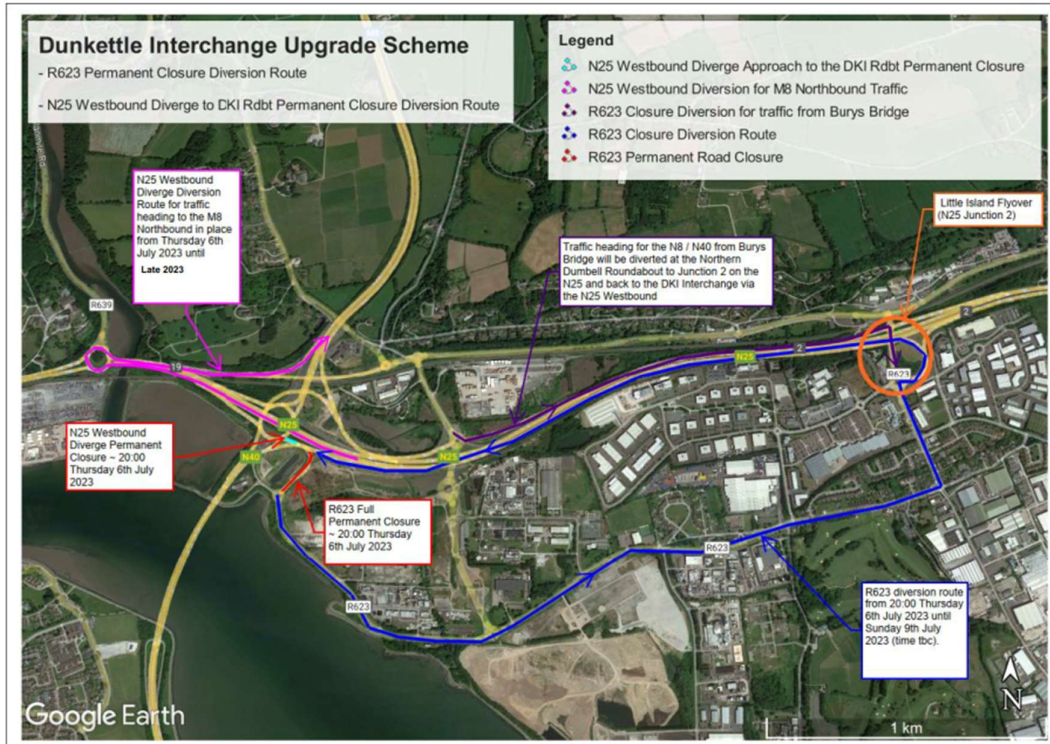
- The section of the N25 Westbound diverge on the immediate approach to the Interchange Roundabout also closed at 8pm on Thursday the 6th July 2023. Follow-up works in this area (which will ultimately become part of the M8 Southbound, Link D) also got underway immediately - see photograph below.



Ongoing Excavation at works Link D & F

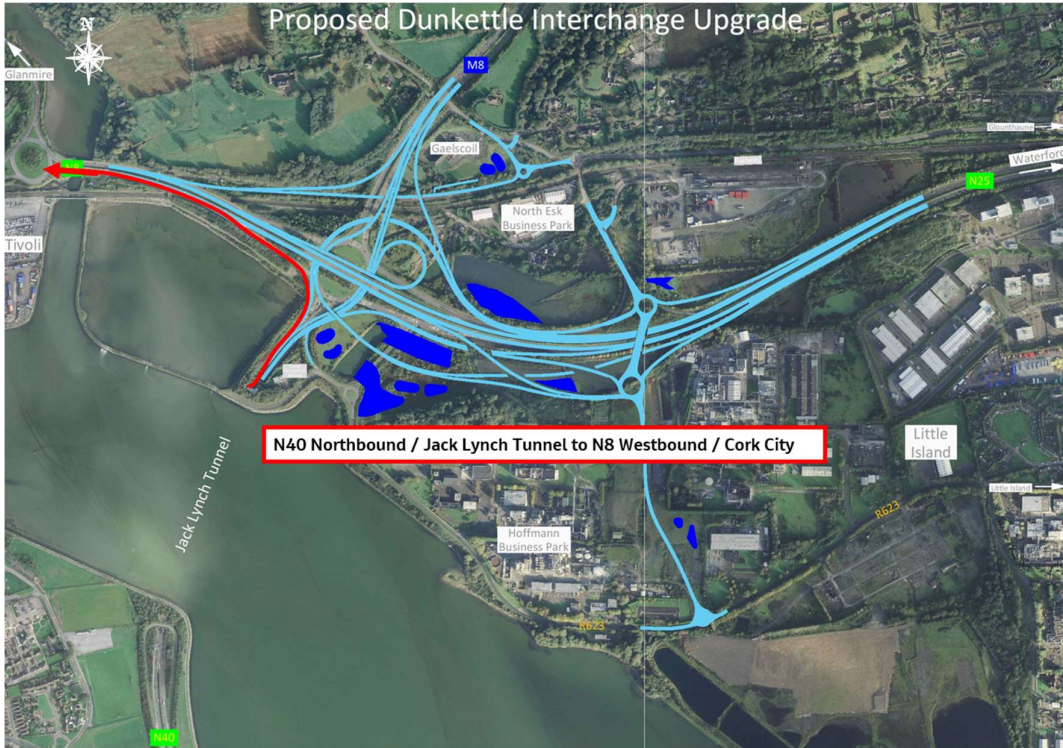
- Until the various new routes open on Sunday the 9th July 2023, the alternative route for the two areas closed above is via the main Little Island Interchange, at Junction 2.





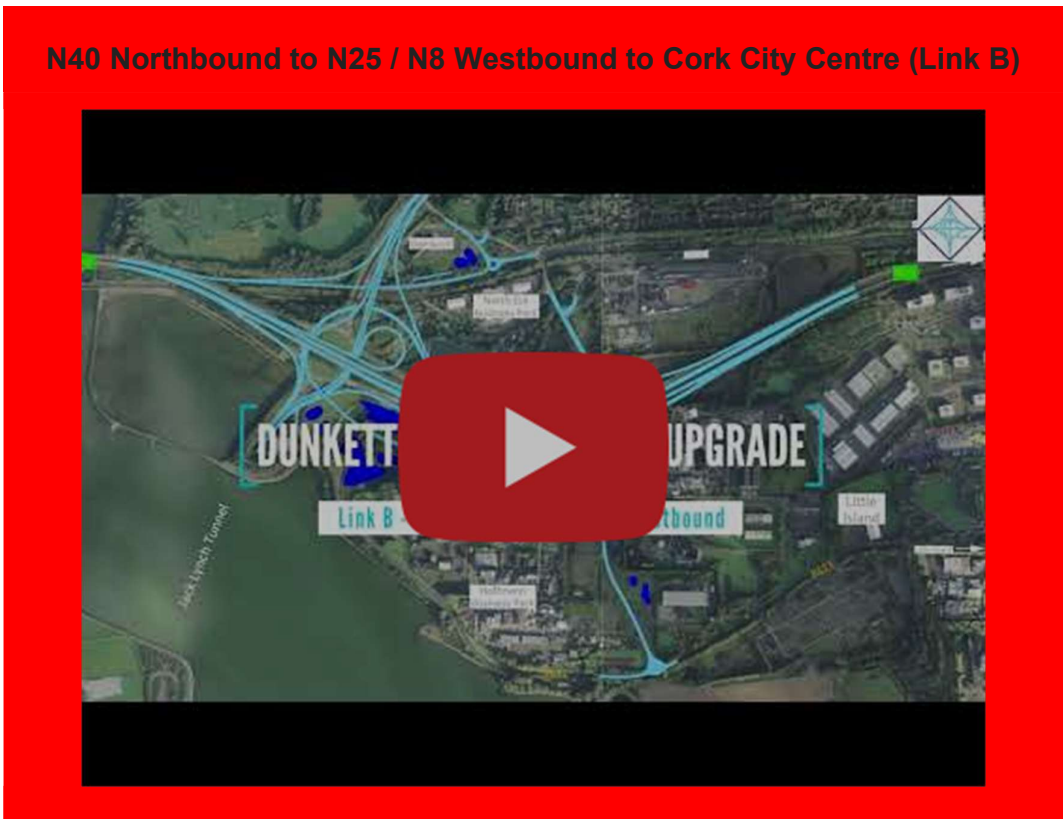
**R623 & N25 Westbound Diverge Access to DKI Rdbt - DIVERSION ROUTE**  
 - 20:00 THURSDAY 6th July to 10:00 SUNDAY 9th 2023

- Traffic routes which will change as a result of the opening on Sunday are summarised as follows:
- N40 Northbound to N25 / N8 Westbound to Cork City Centre (Link B) - see layout plan & video link below.
- N8, Lower Glanmire Road / N25 Eastbound to the Tunnel (Link F) - see layout plan & video link below.
- M8 Southbound to the Tunnel (Link D) - see layout plan & video link below.
- M8 Southbound to N25 / N8 Westbound, Cork City Centre (Link M) - see layout plan & video link below.
- N25 Westbound to the Tunnel (Link K) - see layout plan & video link below.
- N25 Westbound to M8 Northbound - see layout plan & video link below.
- Little Island to the Tunnel (Link L) - see layout plan & video link below.
- N25 Westbound to Little Island (West) (Link J) - see layout plan & video link below
- Little Island to N8 Westbound, Cork City Centre, Lower Glanmire Road (Link M) - see layout plan & video link below.
- Little Island to M8 Northbound (Link M) - see layout plan & video link below.

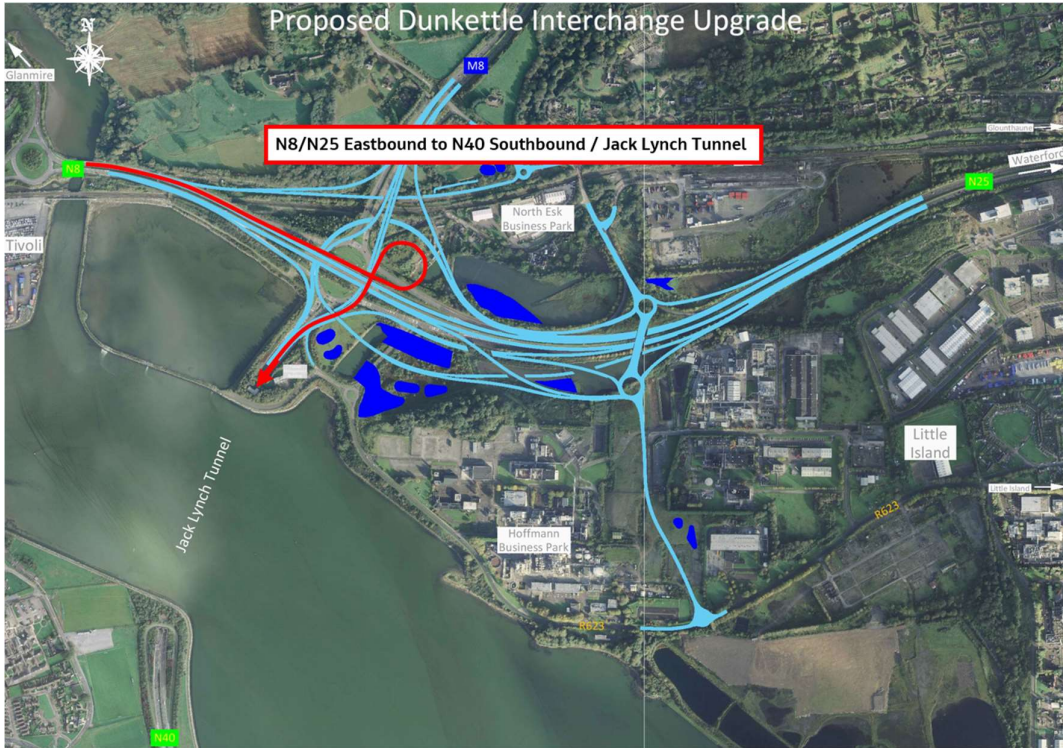


N40 Northbound to N25 / N8 Westbound to Cork City Centre (Link B)

N40 Northbound to N25 / N8 Westbound to Cork City Centre (Link B)

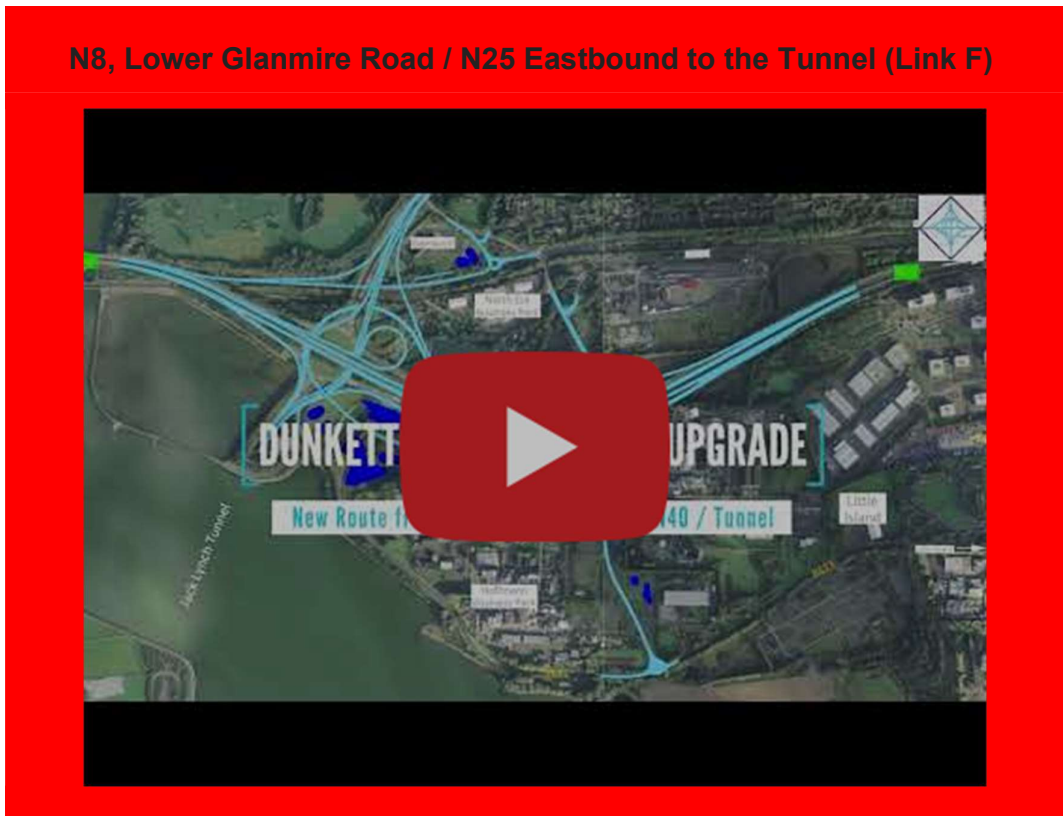


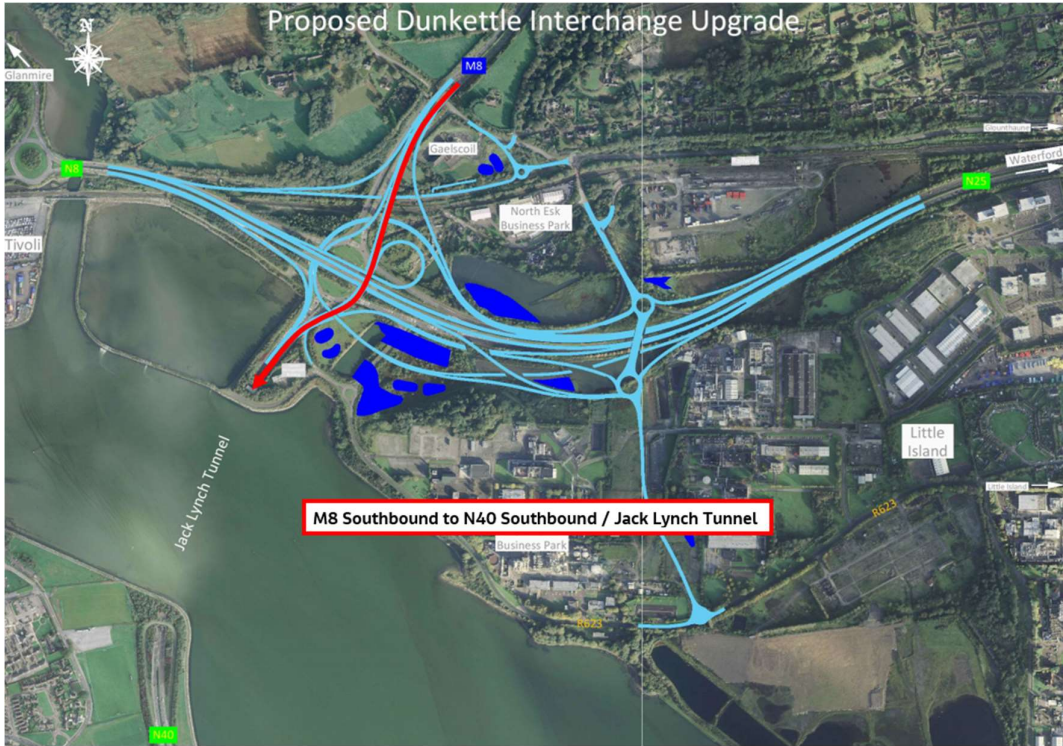




N8, Lower Glanmire Road / N25 Eastbound to the Tunnel (Link F)

N8, Lower Glanmire Road / N25 Eastbound to the Tunnel (Link F)

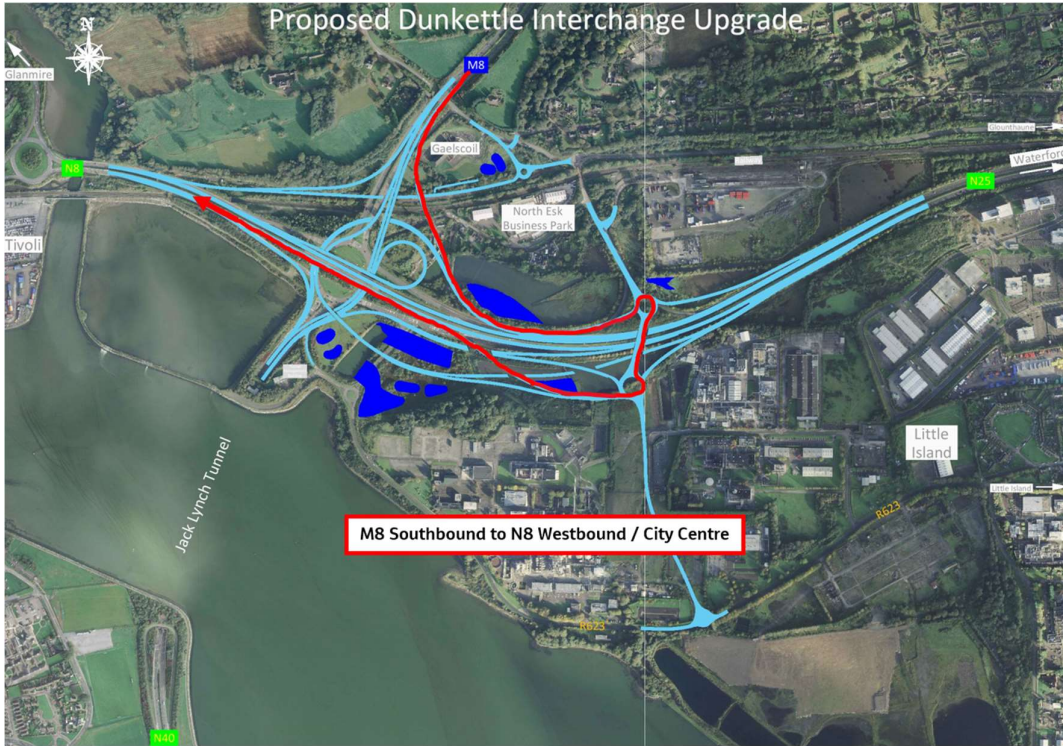




M8 Southbound to the Tunnel (Link D)

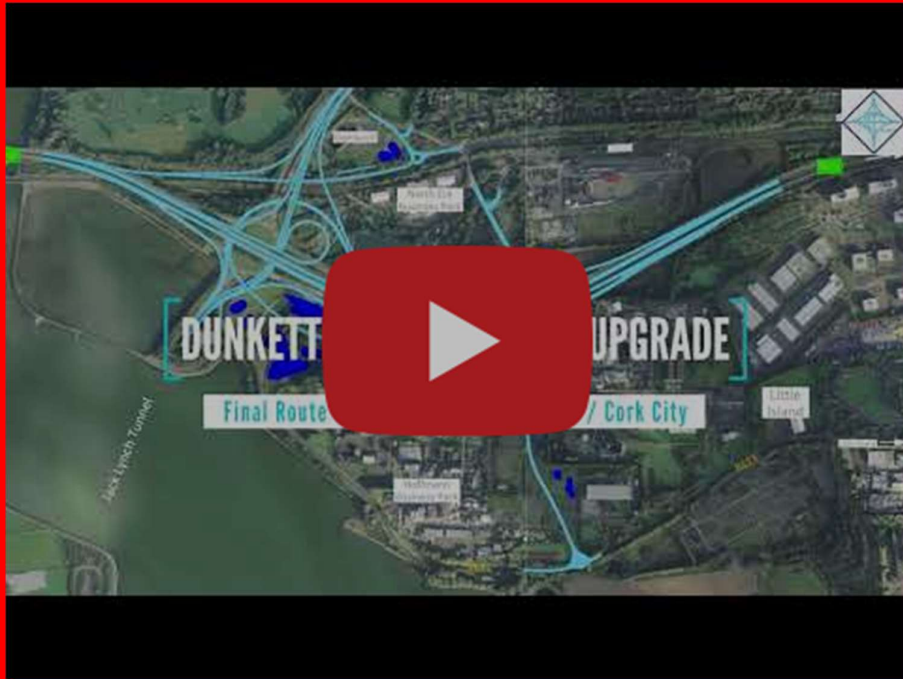


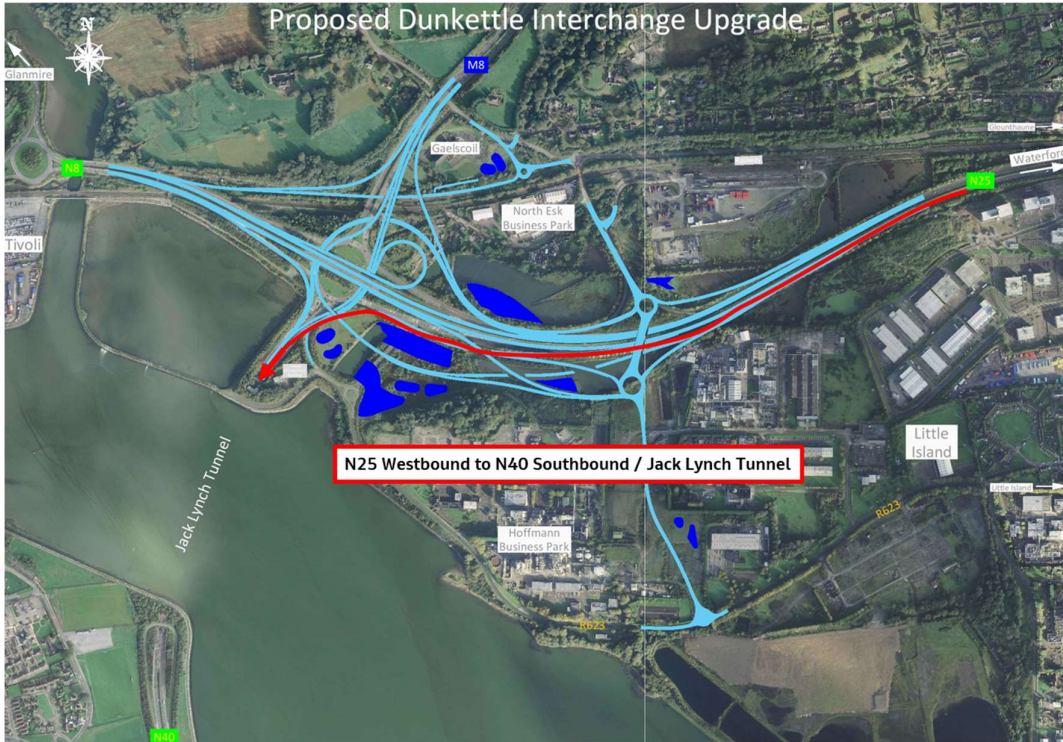




M8 Southbound to N25 / N8 Westbound, Cork City Centre (Link M)

M8 Southbound to N25 / N8 Westbound, Cork City Centre (Link M)

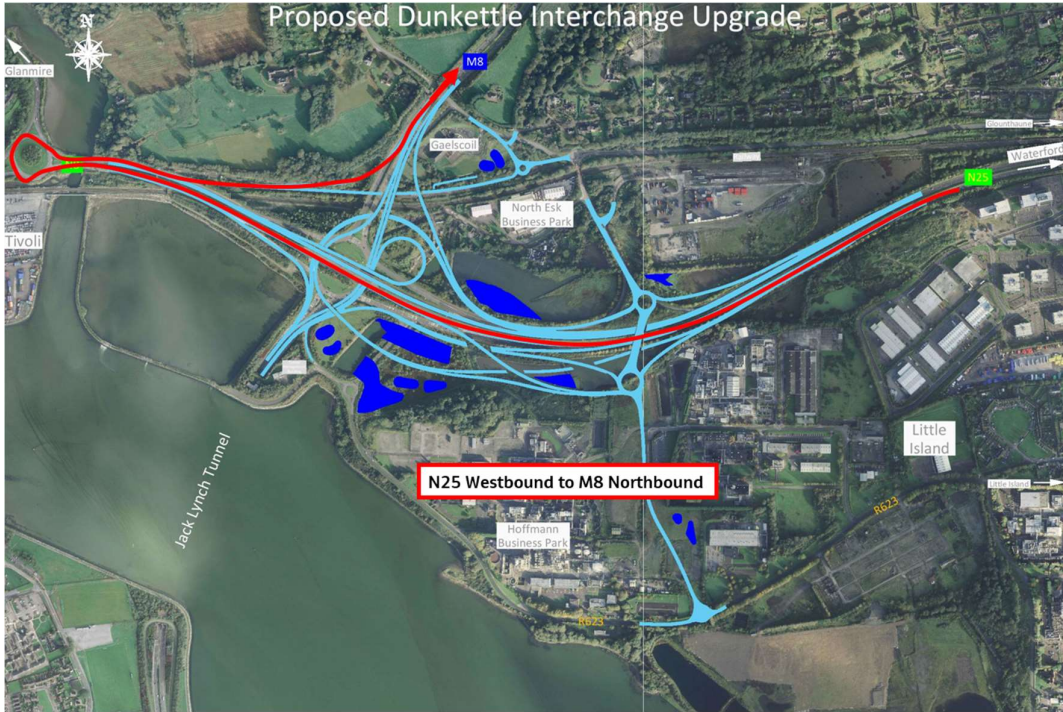




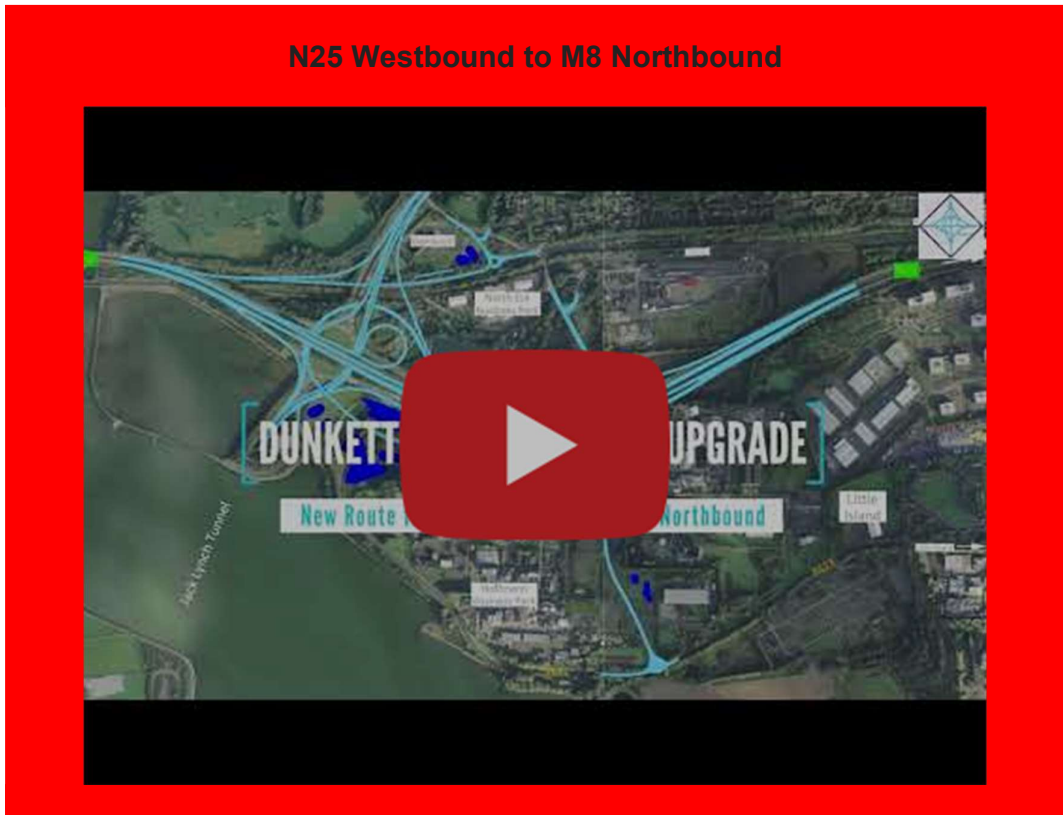
N25 Westbound to the Tunnel (Link K)



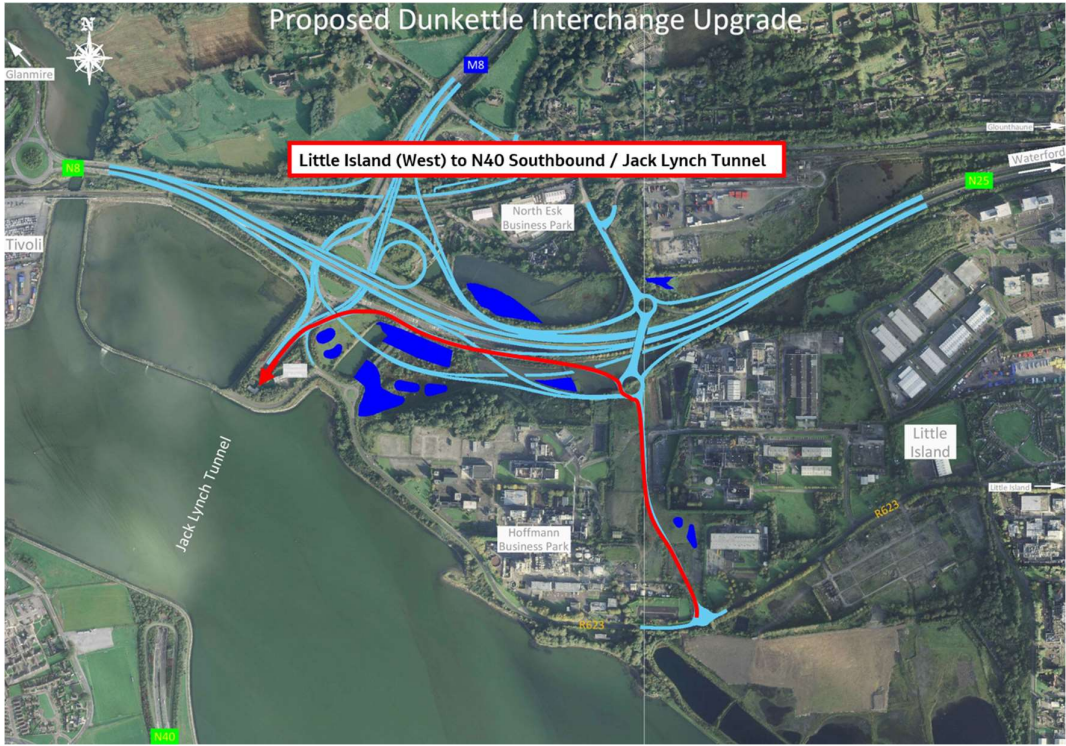




**N25 Westbound to M8 Northbound**

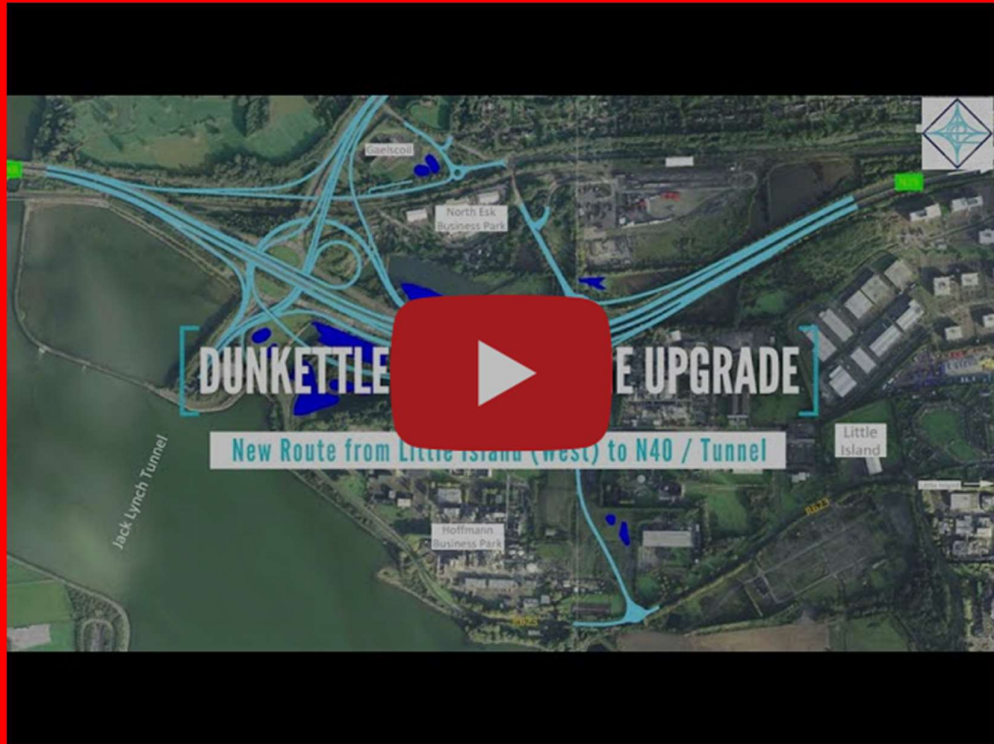


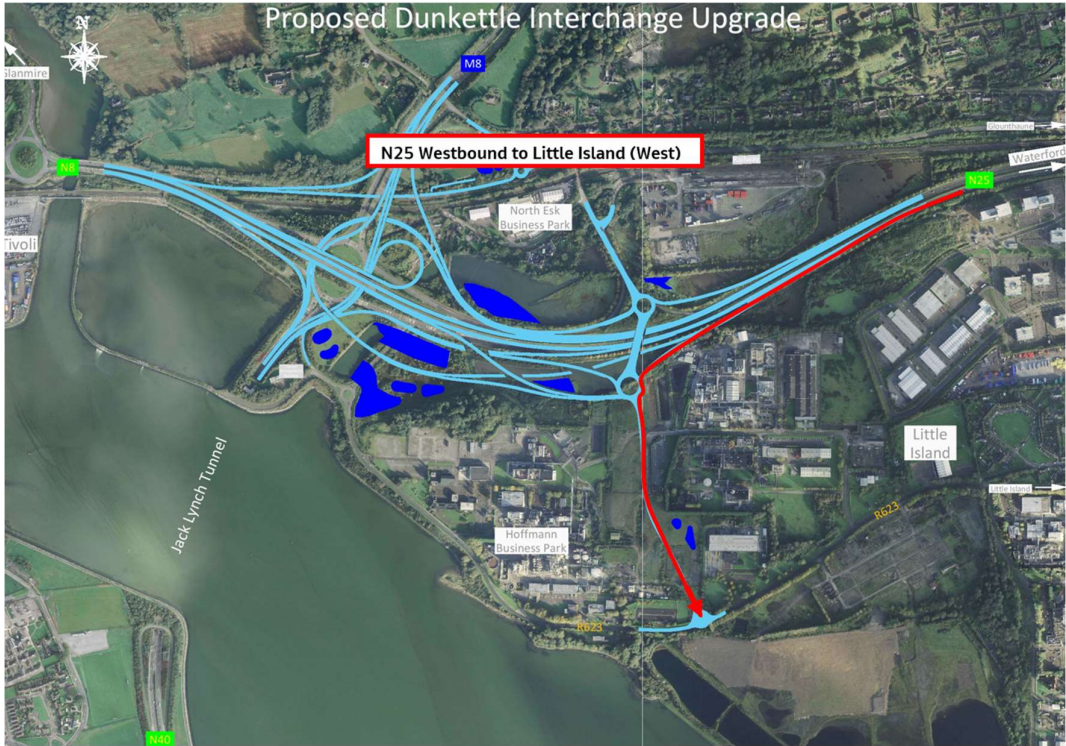




Little Island to the Tunnel (Link L)

## Little Island to the Tunnel (Link L)



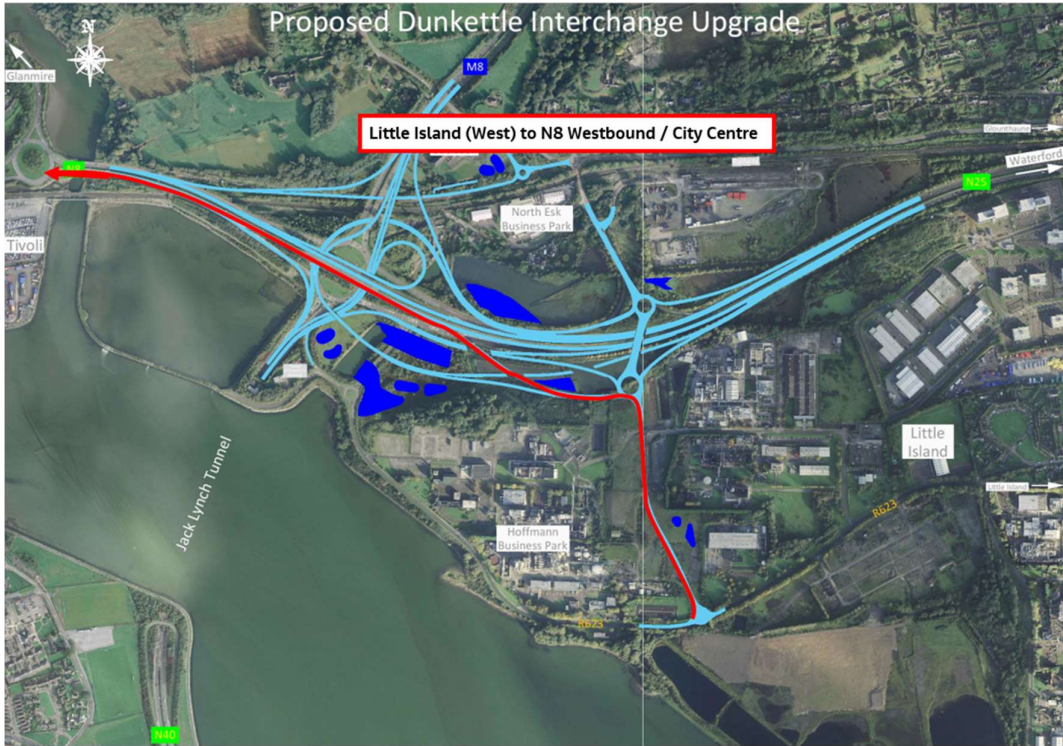


N25 Westbound to Little Island (West) (Link J)



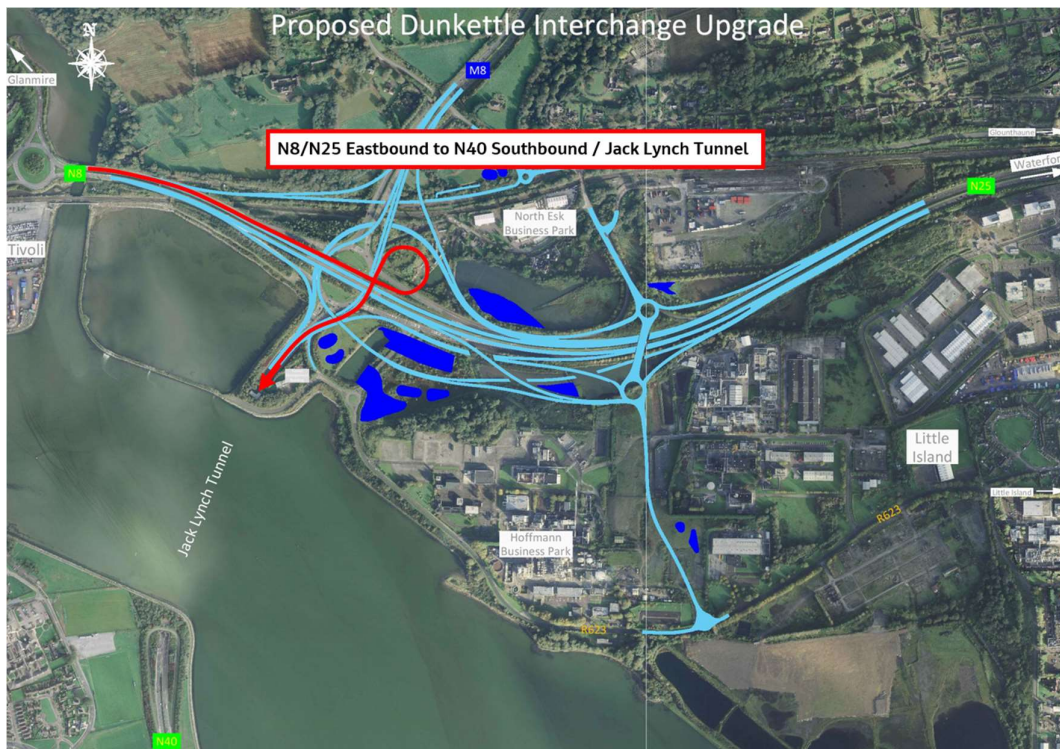
N25 Westbound to Little Island (West) (Link J)





Little Island to N8 Westbound, Cork City Centre, Lower Glanmire Road  
(Link M)

Little Island to N8 Westbound, Cork City Centre, Lower Glanmire Road (Link M)



Little Island to M8 Northbound (Link M)



Little Island to M8 Northbound (Link M)



- The enabling works currently being progressed are essential to ensure the multiple links can open as planned on the 9th July 2023. Increased journey times through the Interchange Roundabout are unavoidable while these enabling works are being progressed. Motorists are asked to plan their journeys through the Interchange in advance over this weekend and to allow additional time for their journeys through the Interchange area, particularly at peak times today and tomorrow.
- The Project Team will be monitoring all changes live over the weekend and will adjust plans as may be required in order to minimise impact. However, some impact is inevitable given the scale and complexity of the works being undertaken.
- One minor issue arose overnight - due to the prevailing weather conditions we were unable to completely block out some sections of the existing signs. Measures to rectify this are currently ongoing.

- As always, please contact us at any time if you have any queries/comments/concerns in relation to the ongoing works.



# Dunkettle Live Traffic App



Click on the icon above to see the benefits of the Dunkettle Live App.



Dunkettle Live App: Download from [Apple App store](#) or from [Google Play store](#)



---

As always, if there are any queries or comments in relation to these works, please contact us at:  
**Phone:** 1800 810077 (at any time), **Email:** [roadconstruction@ccc-site.com](mailto:roadconstruction@ccc-site.com).



Further information on the Dunkettle Scheme can be accessed [www.dunkettle.ie](http://www.dunkettle.ie).

Real time traffic information can be accessed via [www.dunkettletraffic.ie](http://www.dunkettletraffic.ie) or on the Dunkettle Live App ([Apple App store](#) and [Google Play store](#)).

New subscribers to the newsletter can register: [www.dunkettle.ie/newslettersignup](http://www.dunkettle.ie/newslettersignup)



[More at www.Dunkettle.ie](http://www.Dunkettle.ie)



---

Your email address is on a list that we use to keep you informed on the progress on the N40 and Dunkettle Interchange works.

Want to change how you receive these emails?  
You can [update your preferences](#) or [unsubscribe from this list](#).

---