

Dunkettle Progress Update

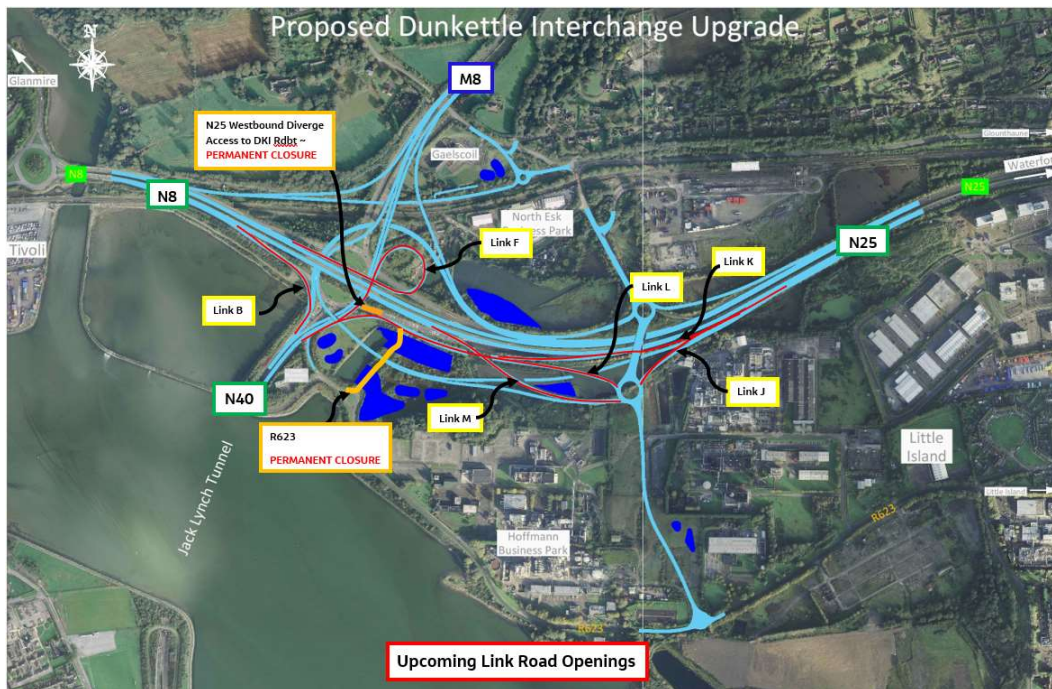
08th July 2023



Twitter



Website

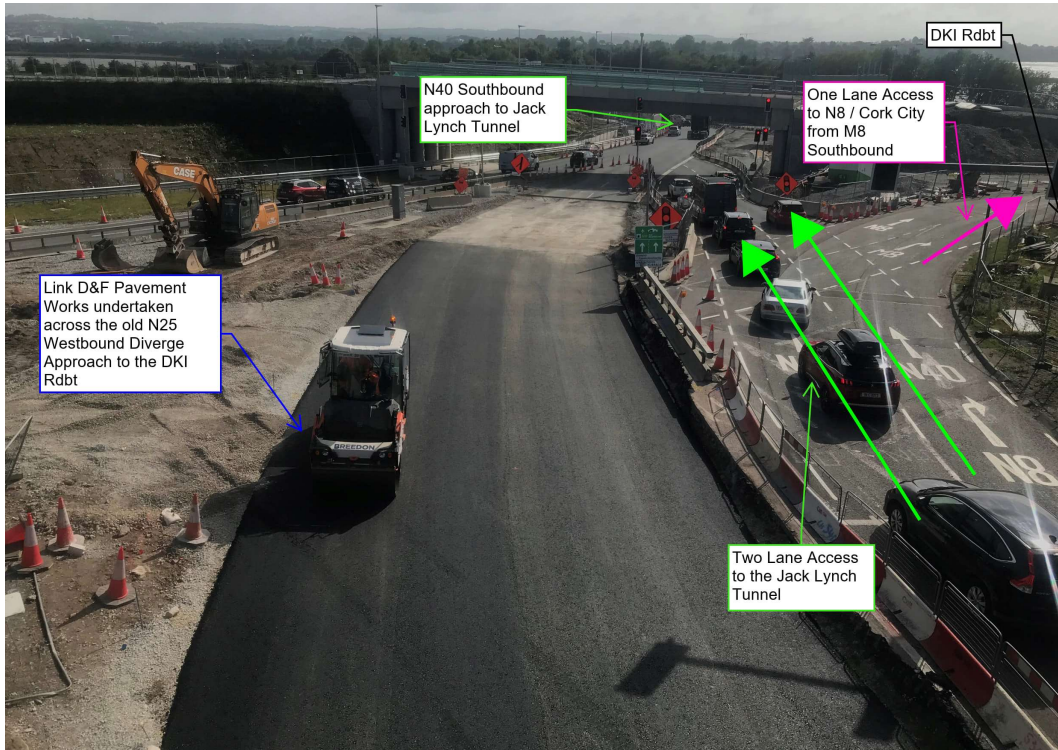


- Works are continuing across the site in association with the multiple link openings planned for tomorrow Sunday the 9th July 2023.
- The first photograph below shows surfacing works ongoing on Link K at what was previously the R623 western exit from Little Island.

- The second photograph below show the pavement works undertaken at the intersection of Link D & Link F with the old N25 Westbound Diverge approach to the Dunkettle Interchange Roundabout.



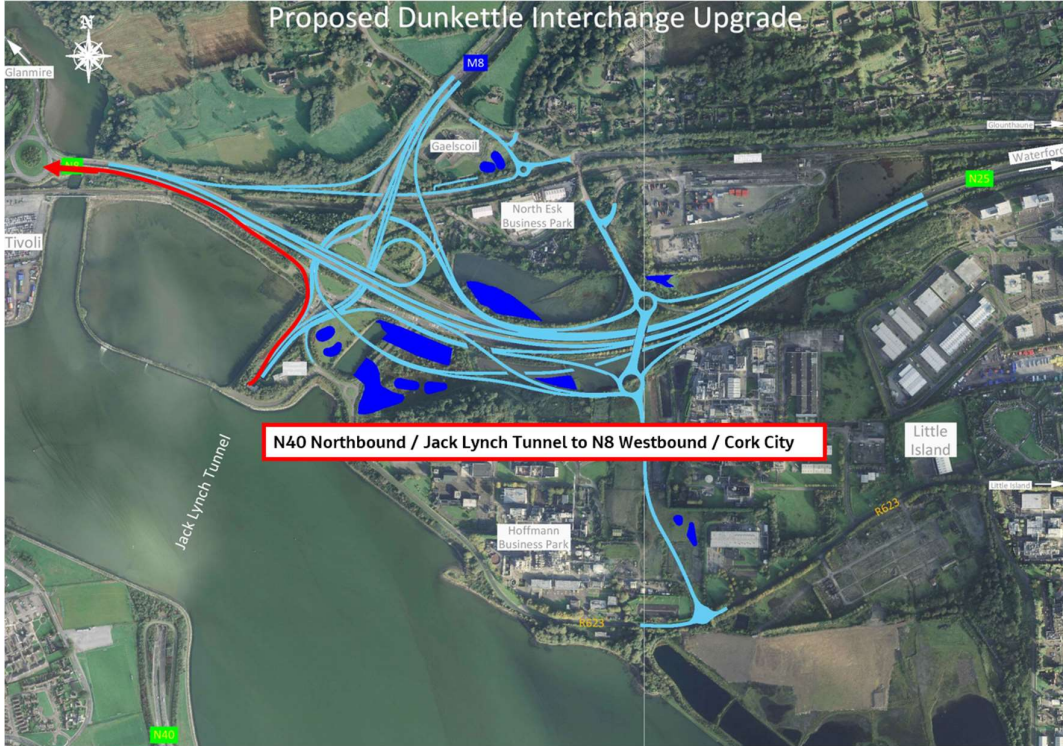
Pavement works ongoing at the intersection of Link K with the old R623 access to the Dunkettle Interchange Roundabout



Pavement works ongoing at the intersection of Link D & Link F with the old N25 Westbound Diverge approach to the Dunkettle Interchange Roundabout

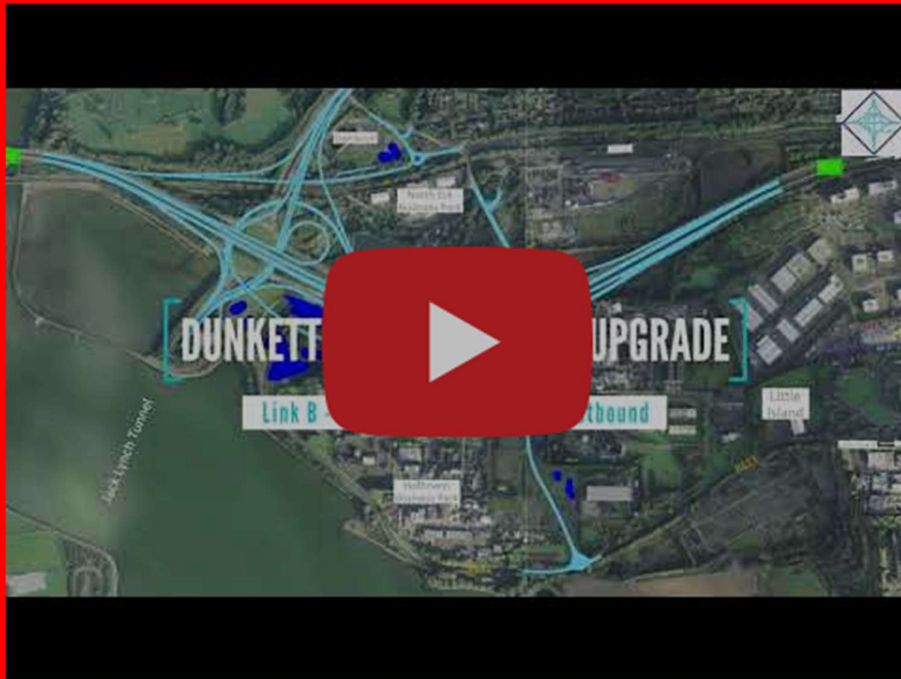
- Works remain on track to facilitate opening of the new links before 10am on Sunday the 9th July 2023.

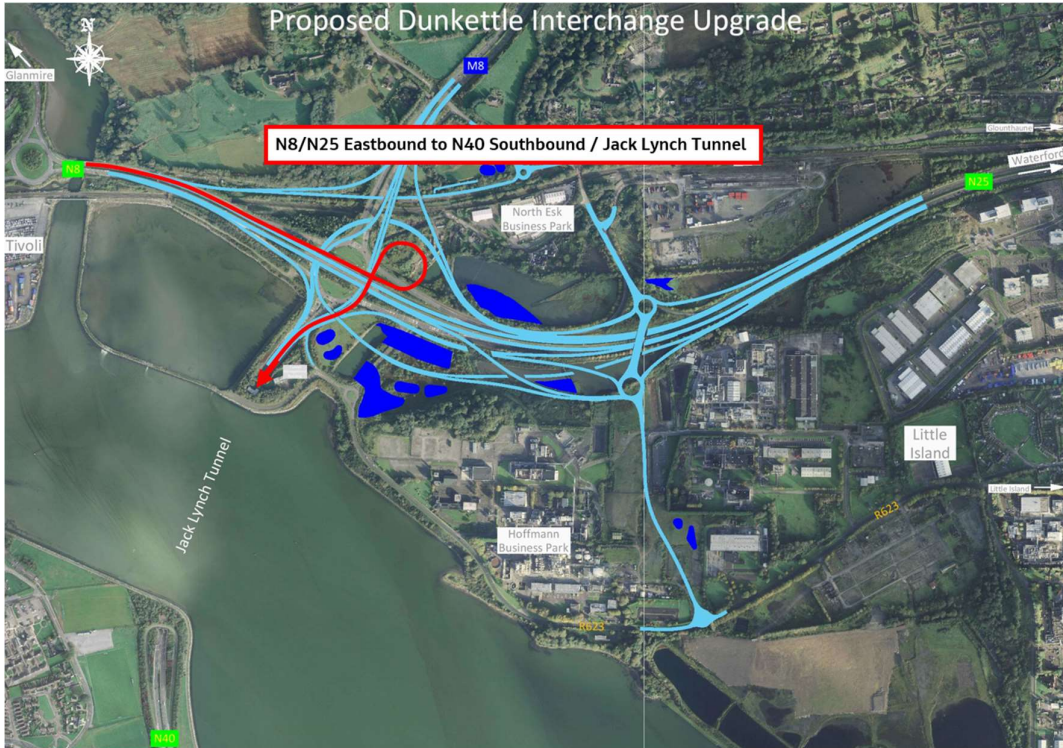
- Traffic routes which will change as a result of the opening on Sunday are summarised as follows:
- N40 Northbound to N25 / N8 Westbound to Cork City Centre (Link B) - see layout plan & video link below.
- N8, Lower Glanmire Road / N25 Eastbound to the Tunnel (Link F) - see layout plan & video link below.
- M8 Southbound to the Tunnel (Link D) - see layout plan & video link below.
- M8 Southbound to N25 / N8 Westbound, Cork City Centre (Link M) - see layout plan & video link below.
- N25 Westbound to the Tunnel (Link K) - see layout plan & video link below.
- N25 Westbound to M8 Northbound - see layout plan & video link below.
- Little Island to the Tunnel (Link L) - see layout plan & video link below.
- N25 Westbound to Little Island (West) (Link J) - see layout plan & video link below
- Little Island to N8 Westbound, Cork City Centre, Lower Glanmire Road (Link M) - see layout plan & video link below.
- Little Island to M8 Northbound (Link M) - see layout plan & video link below.



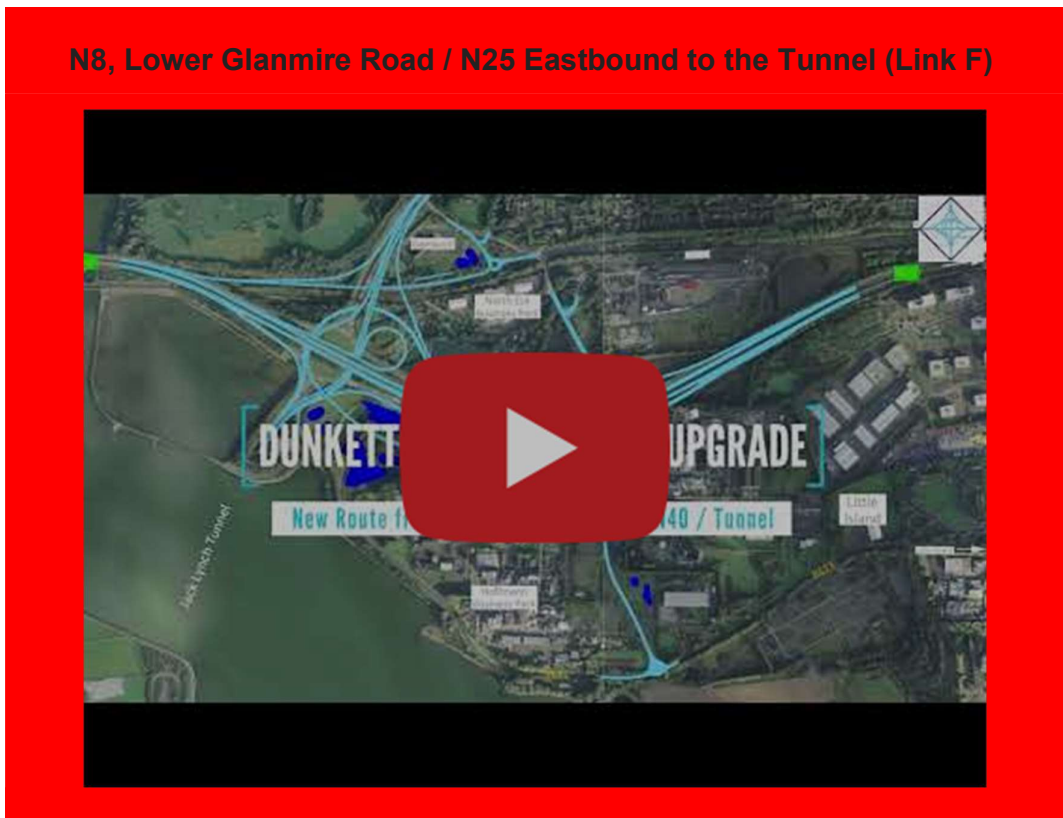
N40 Northbound to N25 / N8 Westbound to Cork City Centre (Link B)

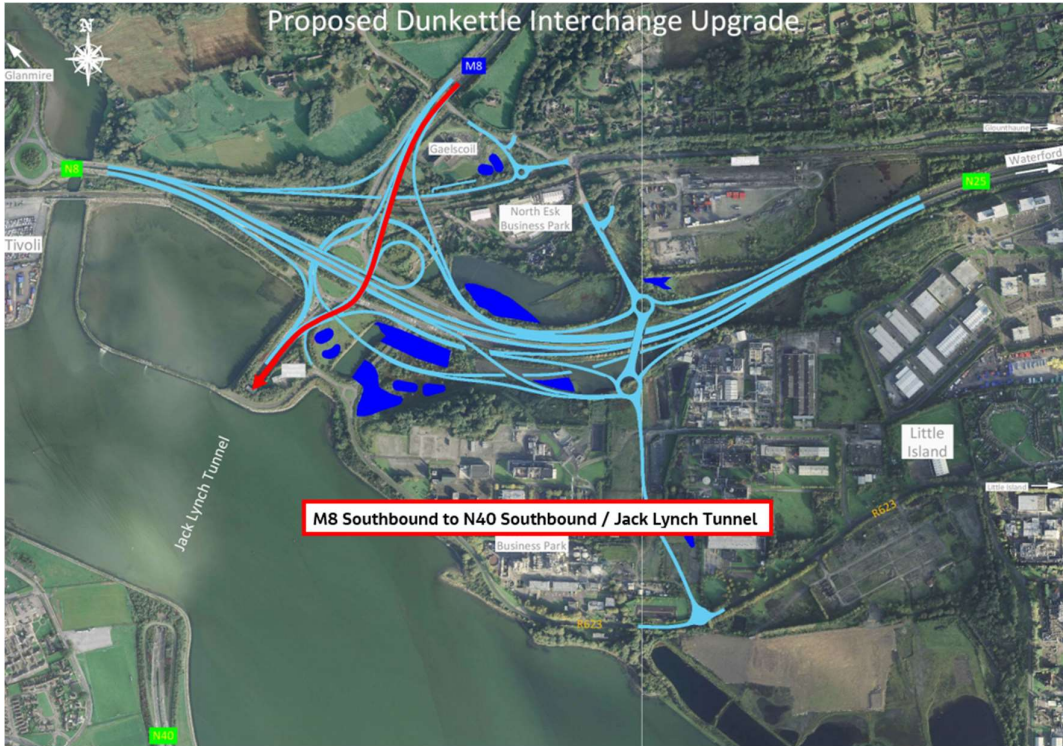
N40 Northbound to N25 / N8 Westbound to Cork City Centre (Link B)





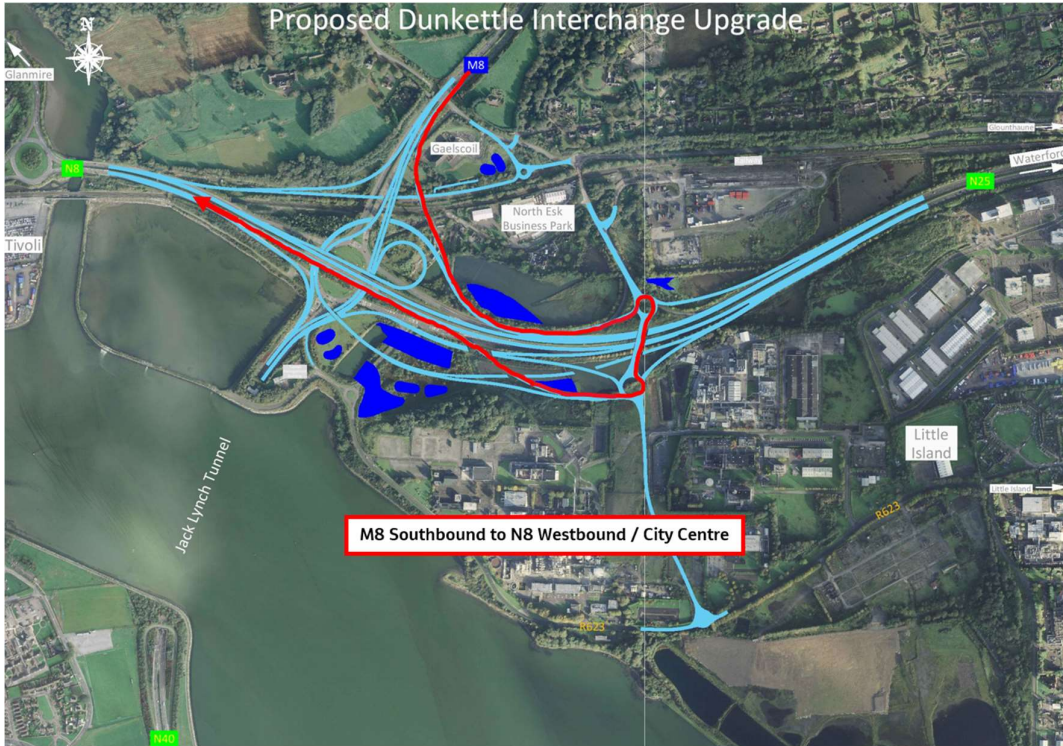
N8, Lower Glanmire Road / N25 Eastbound to the Tunnel (Link F)





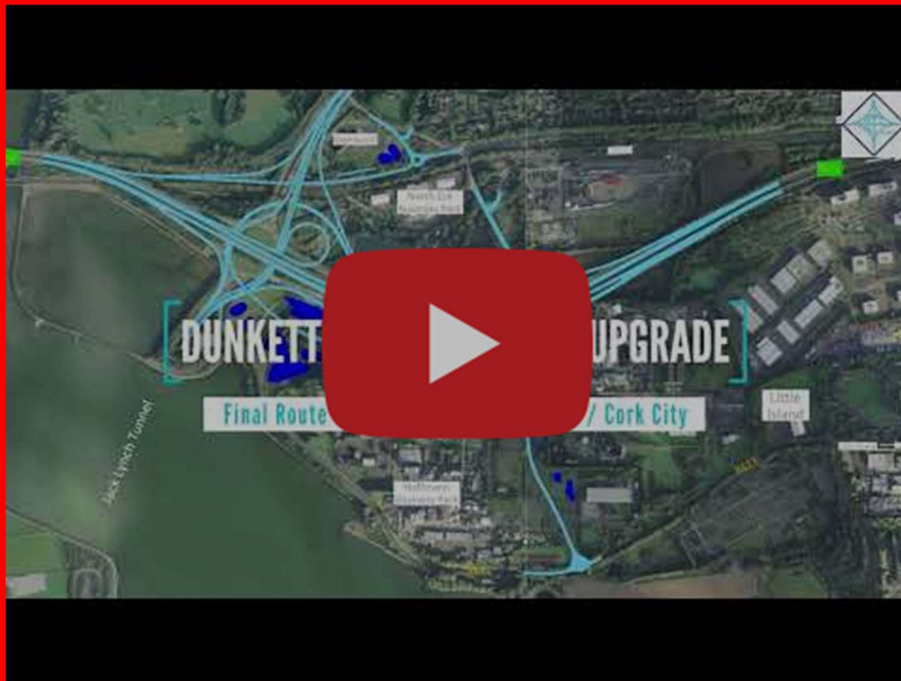
M8 Southbound to the Tunnel (Link D)

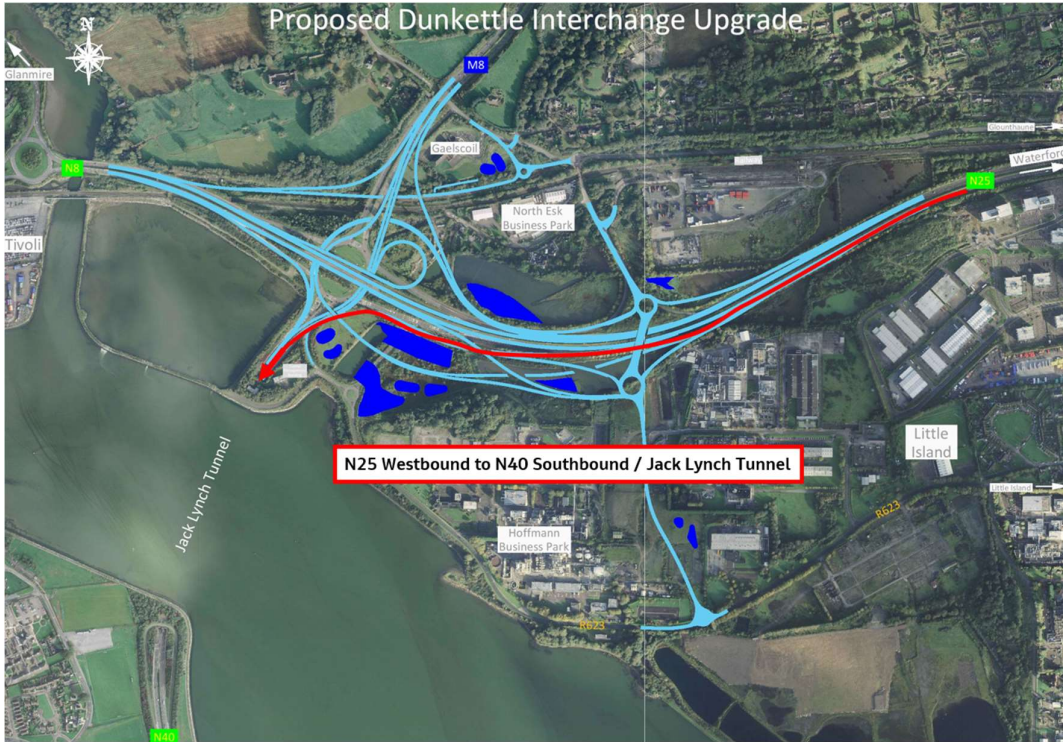




M8 Southbound to N25 / N8 Westbound, Cork City Centre (Link M)

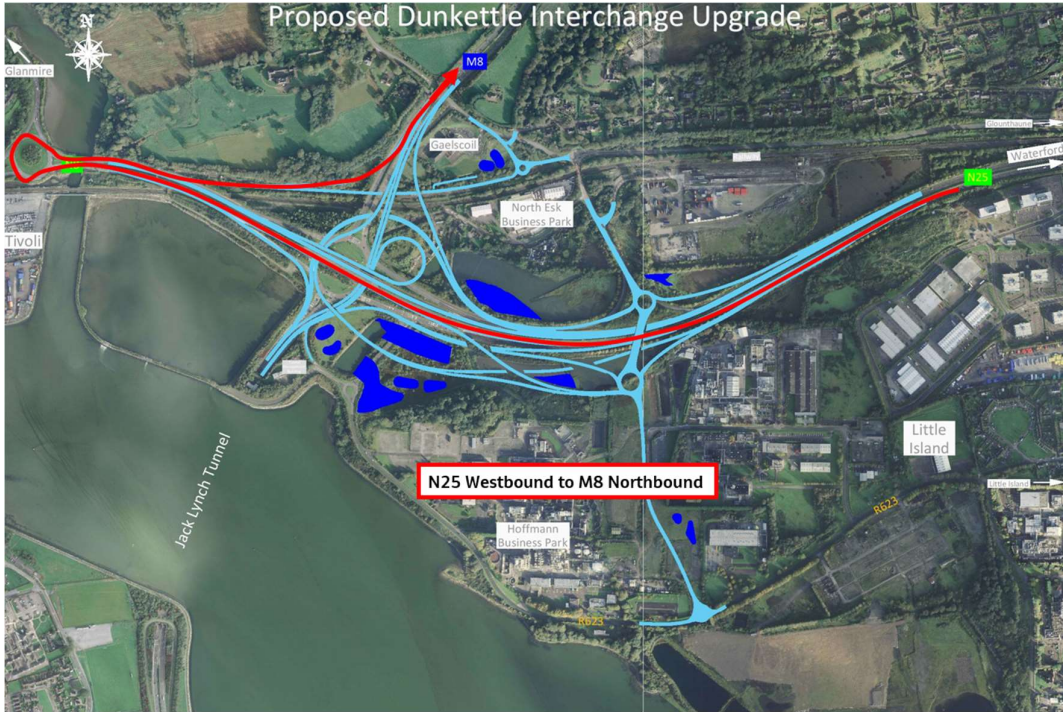
M8 Southbound to N25 / N8 Westbound, Cork City Centre (Link M)



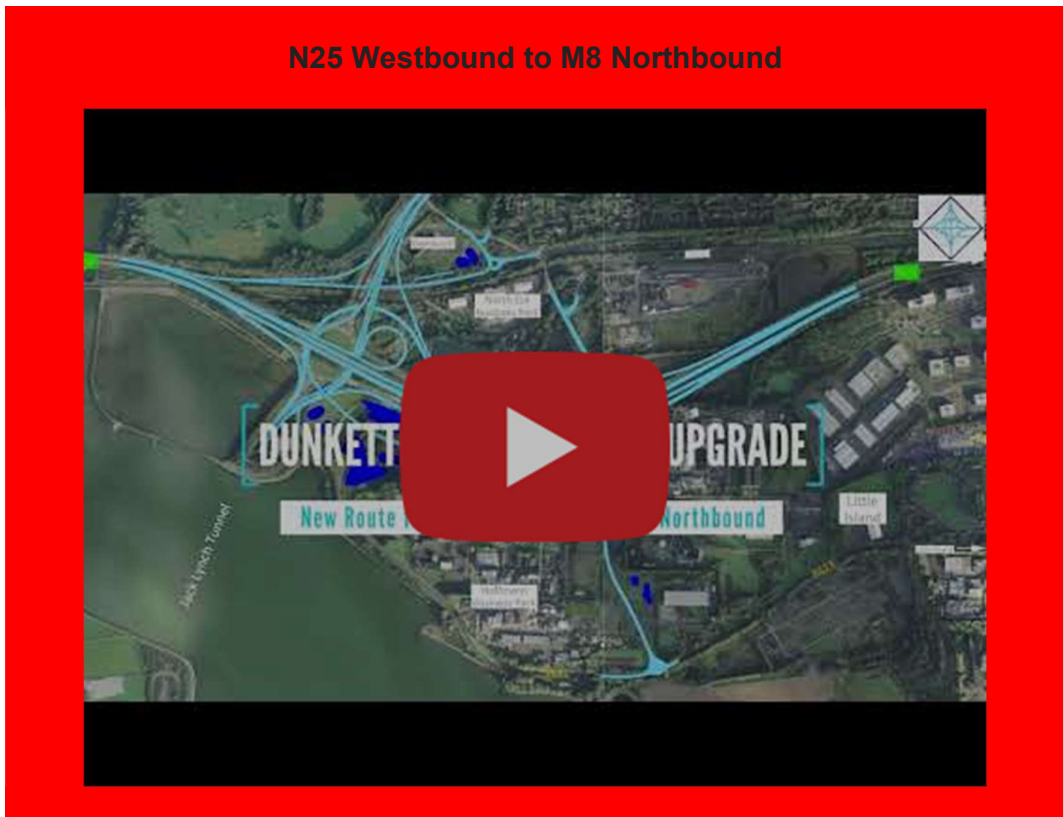


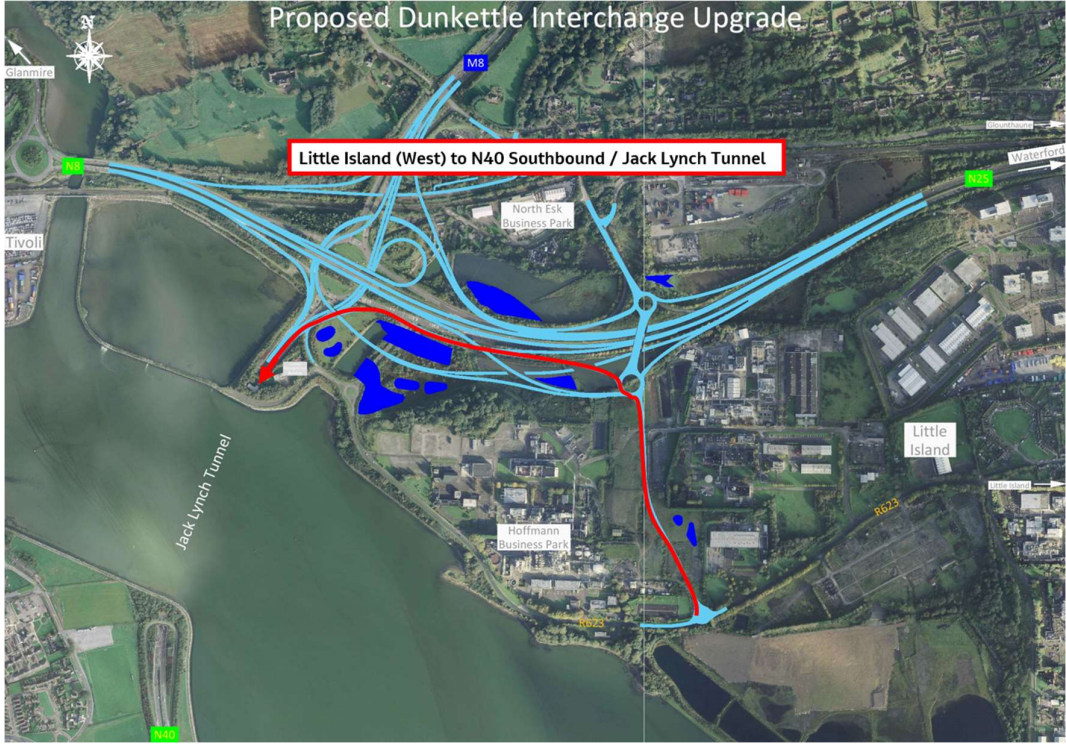
N25 Westbound to the Tunnel (Link K)





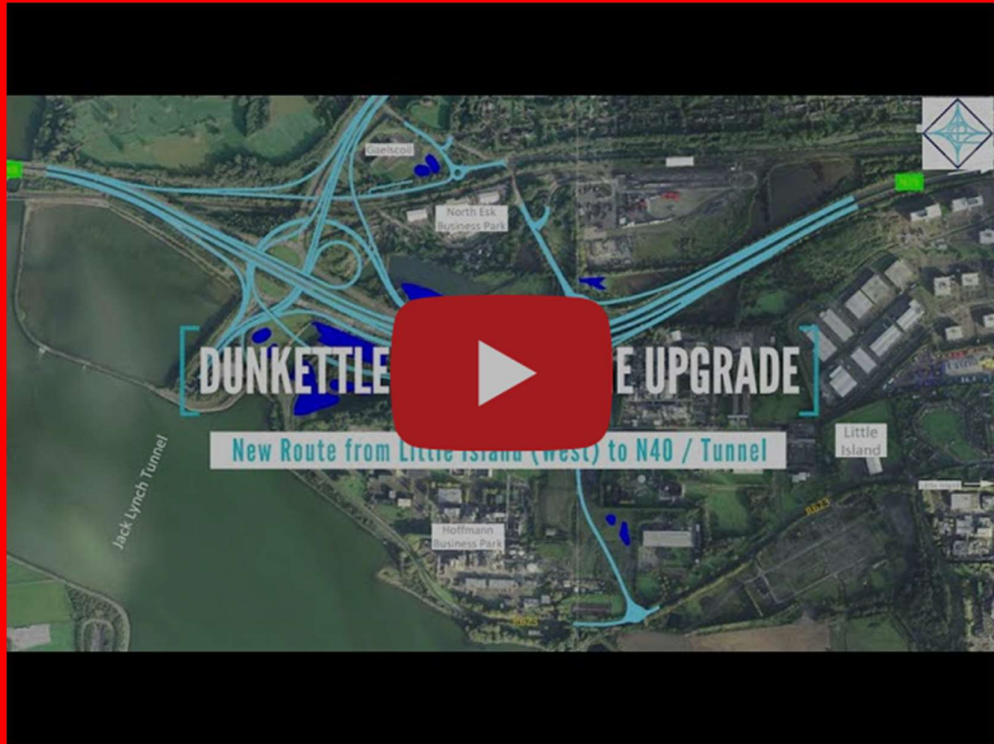
N25 Westbound to M8 Northbound

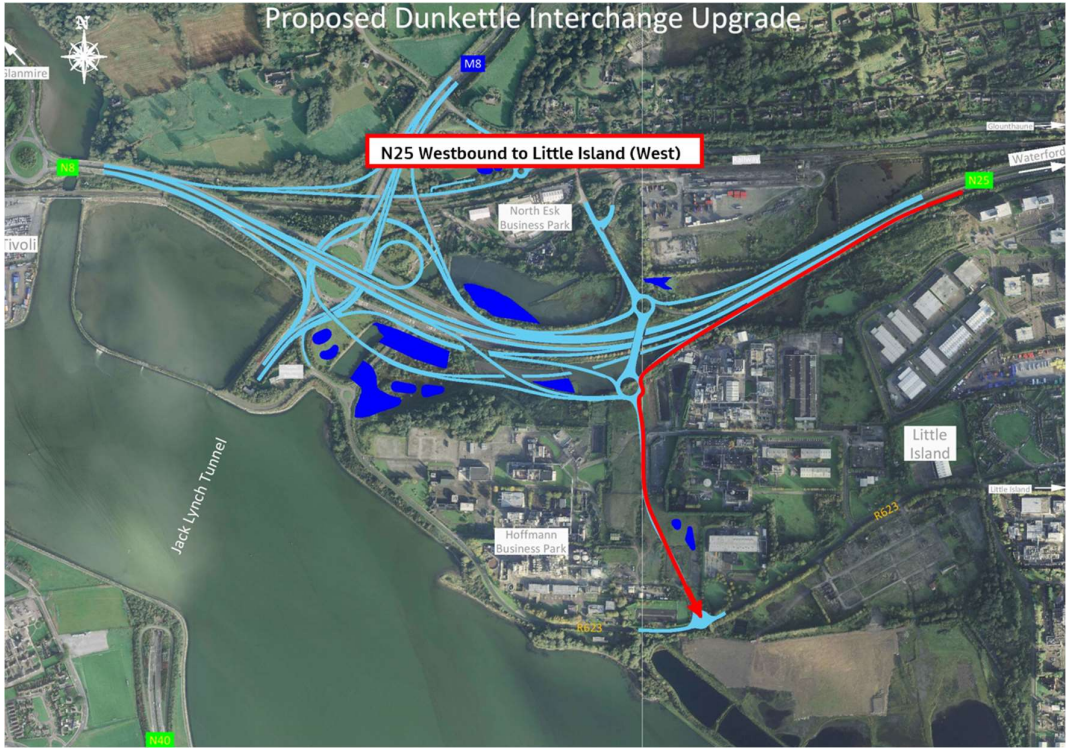




Little Island to the Tunnel (Link L)

Little Island to the Tunnel (Link L)

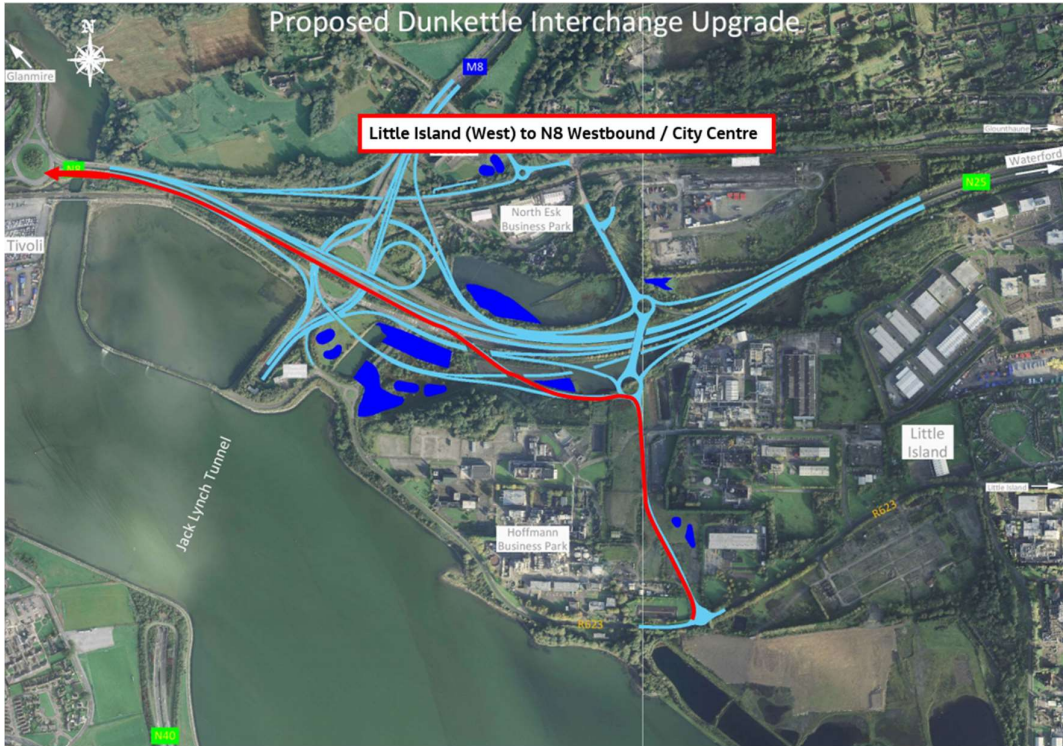




N25 Westbound to Little Island (West) (Link J)

N25 Westbound to Little Island (West) (Link J)

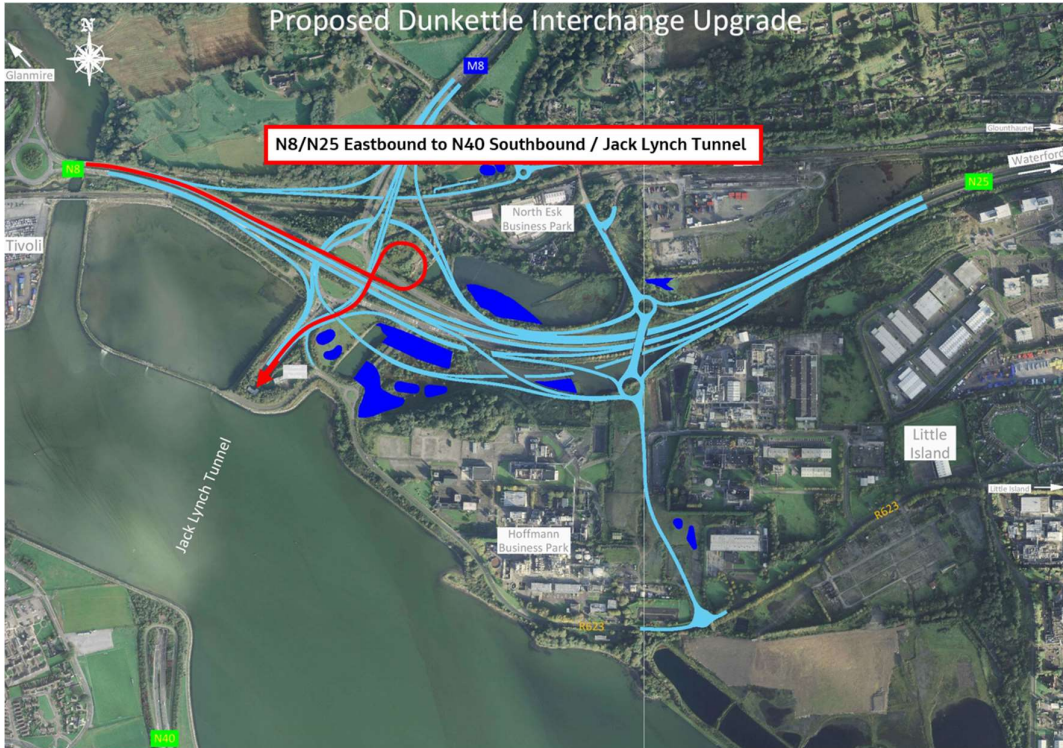




**Little Island to N8 Westbound, Cork City Centre, Lower Glanmire Road
(Link M)**

Little Island to N8 Westbound, Cork City Centre, Lower Glanmire Road (Link M)



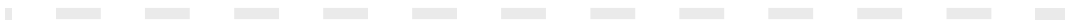


Little Island to M8 Northbound (Link M)



- The enabling works currently being progressed are essential to ensure the multiple links can open as planned on the 9th July 2023. Increased journey times through the Interchange Roundabout are unavoidable while these enabling works are being progressed. Motorists are asked to plan their journeys through the Interchange in advance over this weekend and to allow additional time for their journeys through the Interchange area, particularly at peak times today and tomorrow.

- As always, please contact us at any time if you have any queries/comments/concerns in relation to the ongoing works.



Dunkettle Live Traffic App



Click on the icon above to see the benefits of the Dunkettle Live App.



Dunkettle Live App: Download from [Apple App store](#) or from [Google Play store](#)

As always, if there are any queries or comments in relation to these works, please contact us at:
Phone: 1800 810077 (at any time), **Email:** roadconstruction@ccc-site.com.



Further information on the Dunkettle Scheme can be accessed www.dunkettle.ie.

Real time traffic information can be accessed via www.dunkettletraffic.ie or on the Dunkettle Live App ([Apple App store](#) and [Google Play store](#)).

New subscribers to the newsletter can register: www.dunkettle.ie/newslettersignup



[More at www.Dunkettle.ie](http://www.Dunkettle.ie)



Your email address is on a list that we use to keep you informed on the progress on the N40 and Dunkettle Interchange works.

Want to change how you receive these emails?
You can [update your preferences](#) or [unsubscribe from this list](#).
