

# Dunkettle Progress Update

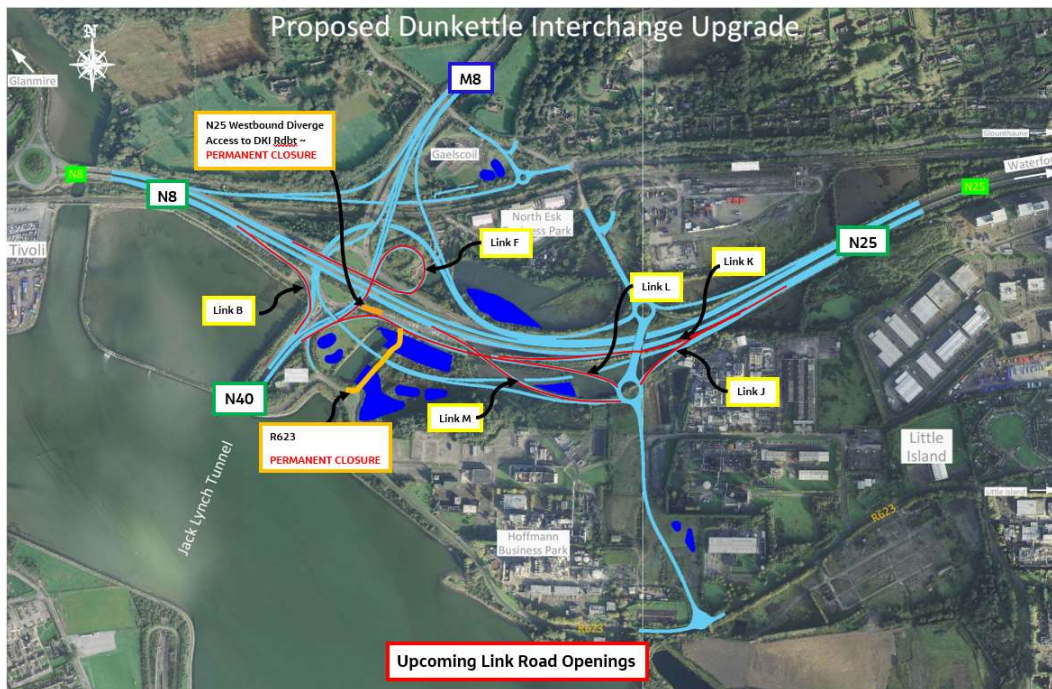
## 09th July 2023



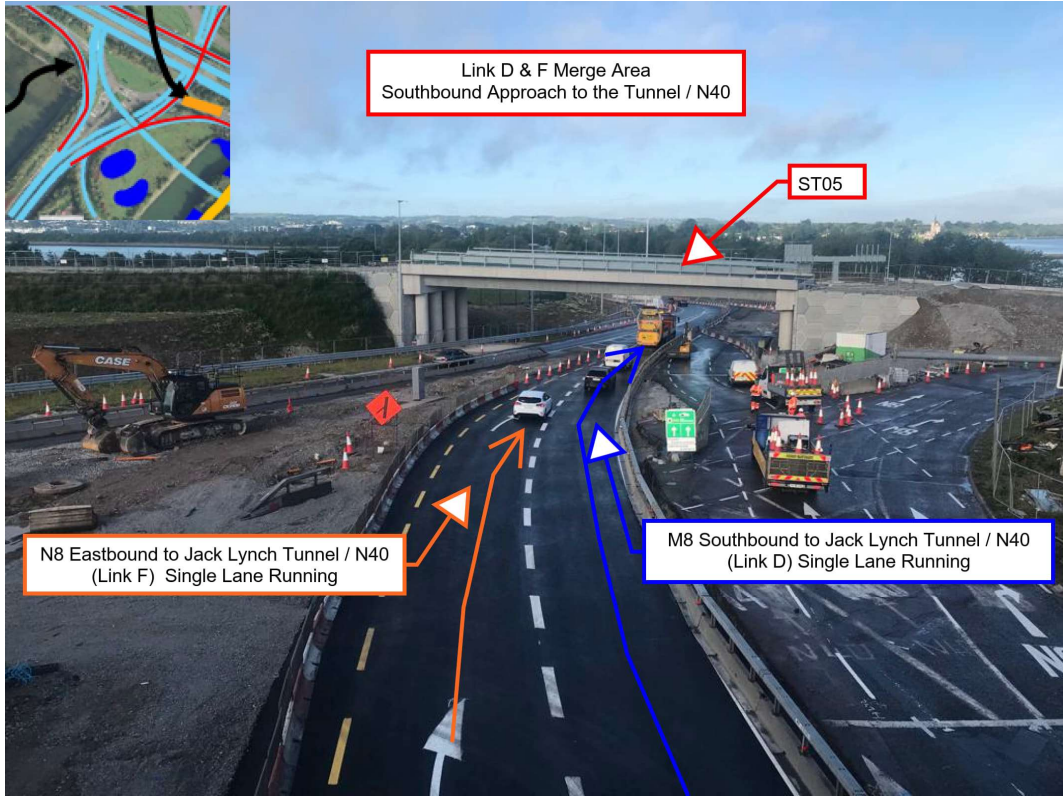
Twitter



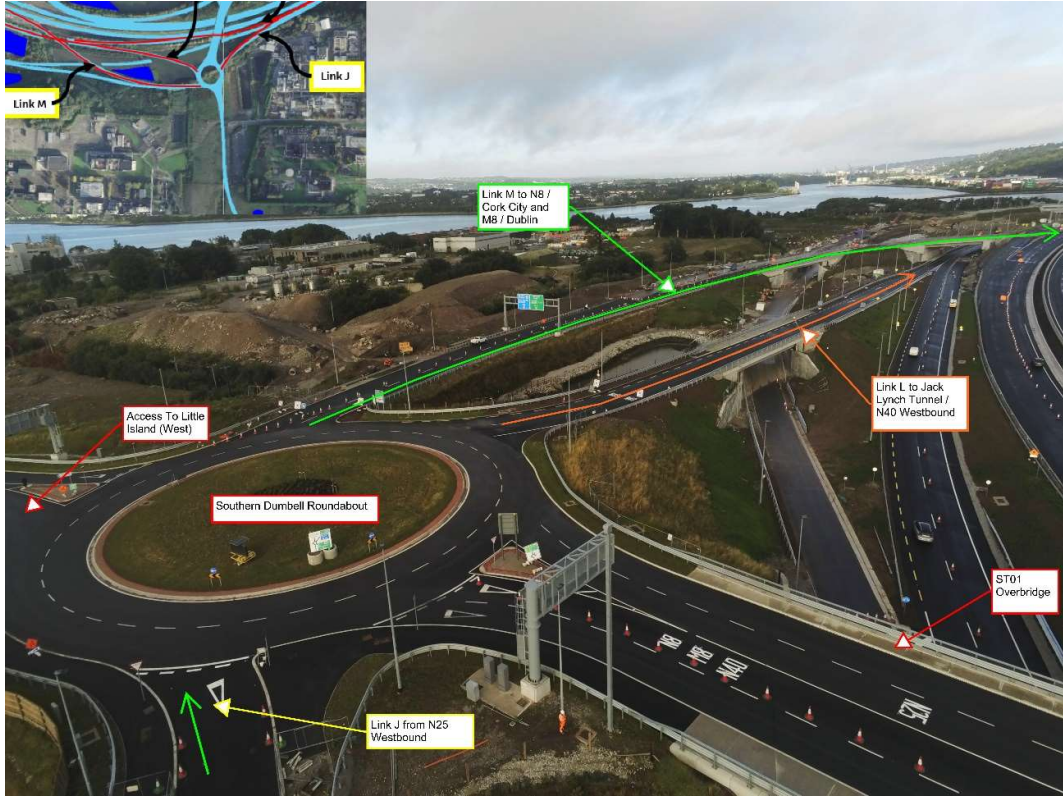
Website



- The new link roads on the Dunkettle Interchange Upgrade Project opened to traffic as planned before 8.30am today, Sunday the 9th July 2023.

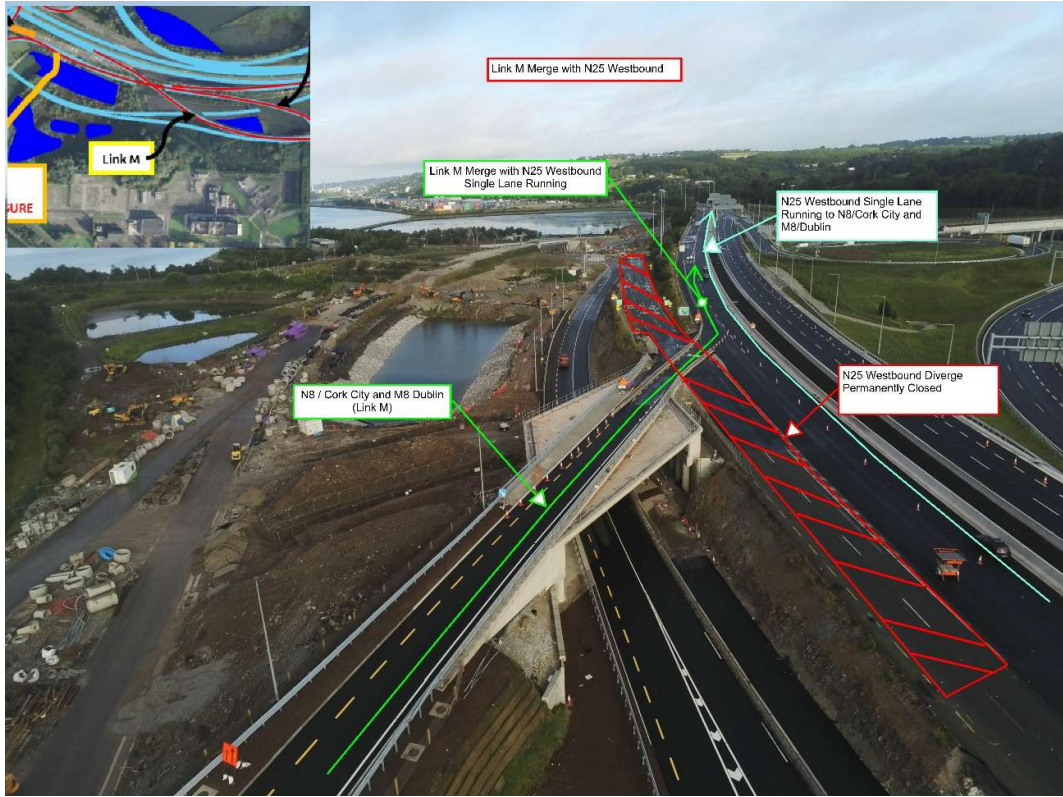


**M8 Southbound (Link D) Merge Area with N8 / City (Link F) traffic heading to the Jack Lynch Tunnel / N40 Westbound**

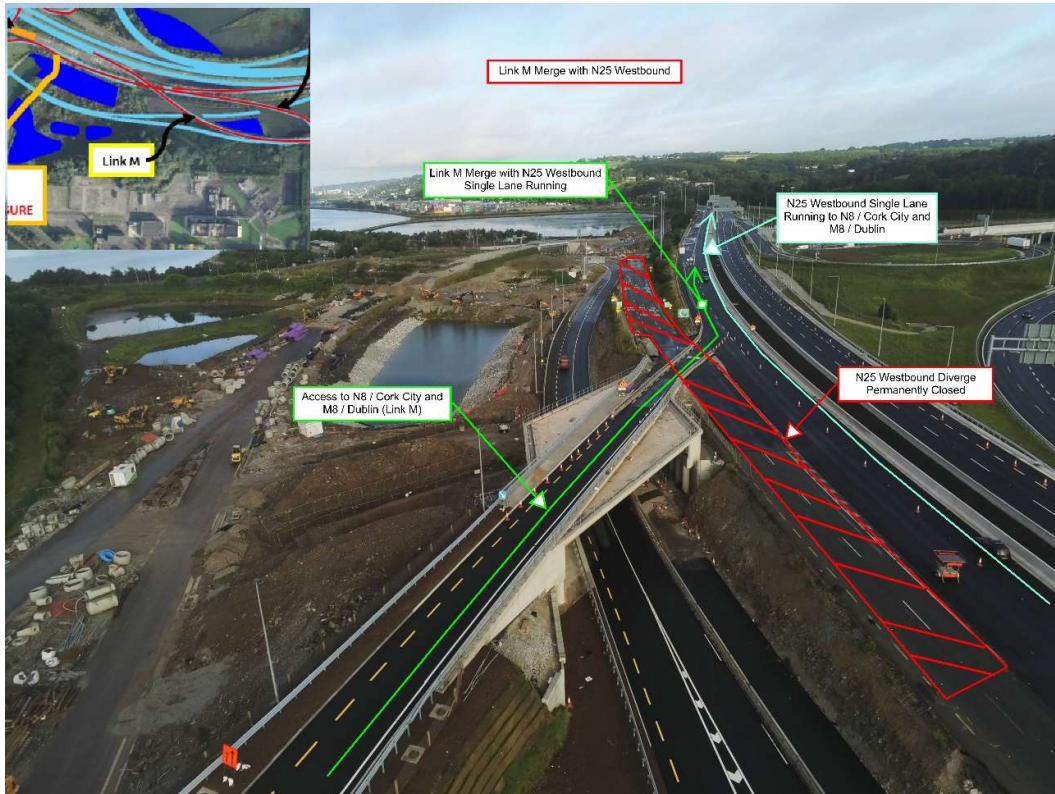


New Layout at the Southern Roundabout at Structure ST01





Link M Merge Area with N25 Westbound



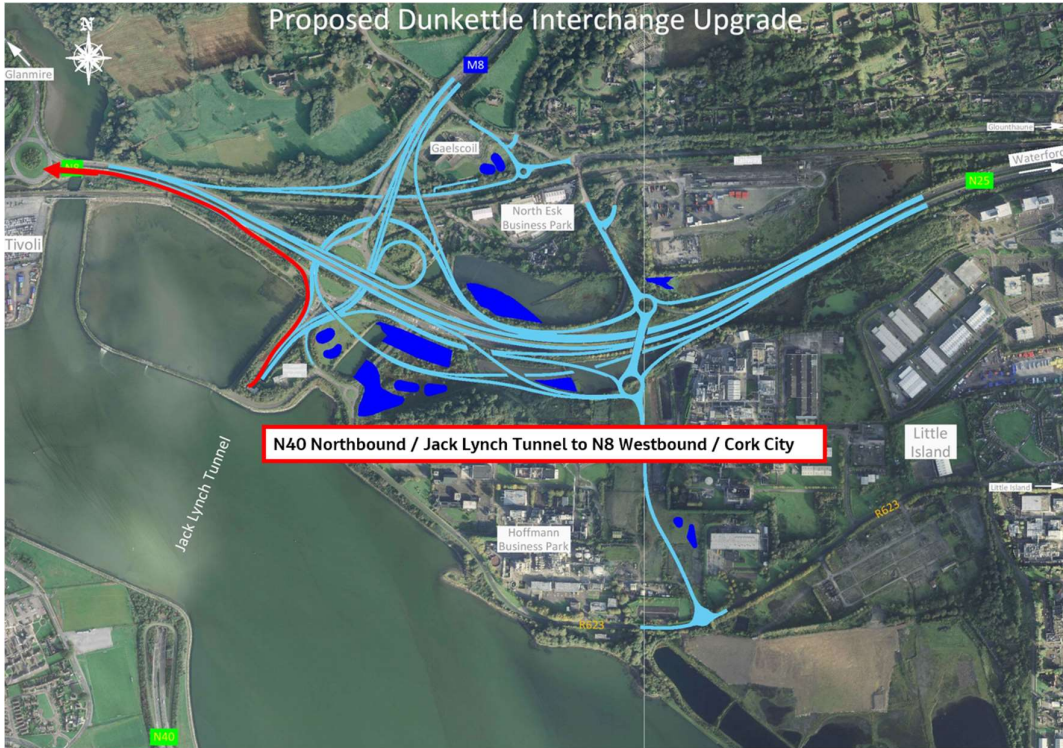
**Link K & Link J South of the N25 Westbound**

- Speed control measures are in place across the site and motorists are asked to pay particular attention to the posted speed limits over the coming period as the new road layout becomes established.

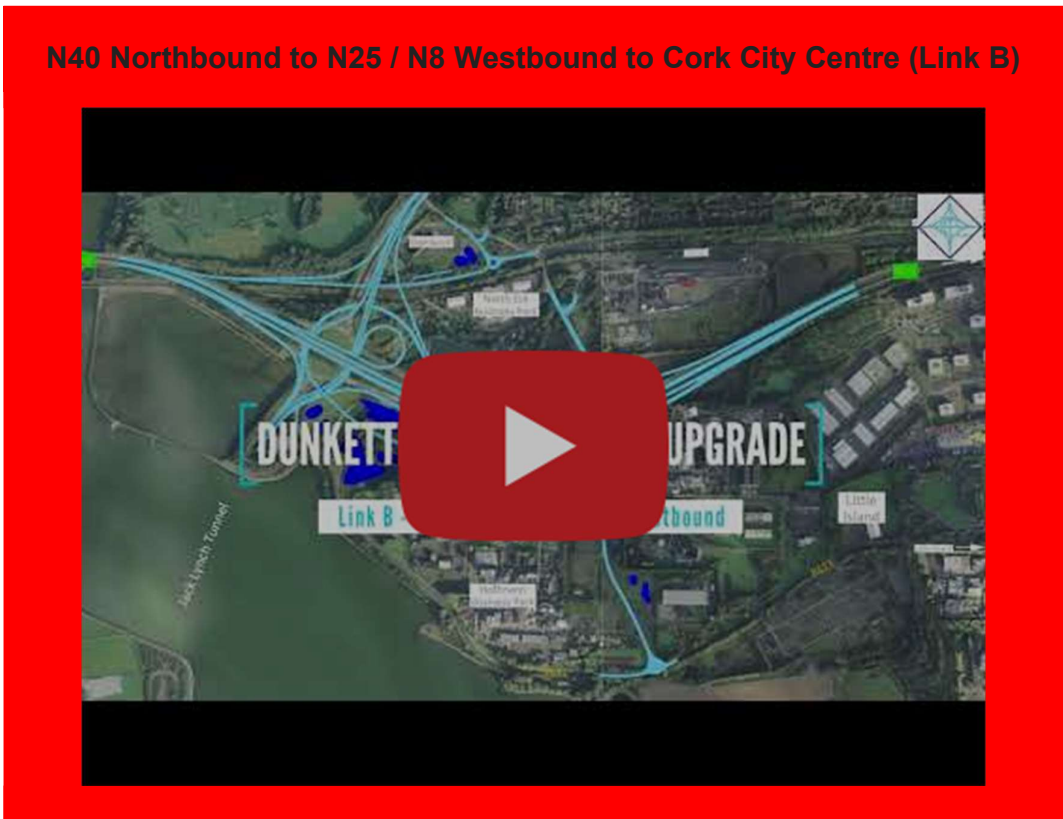
- Motorists are also asked to pay particular attention to the temporary and permanent directional signage given the scale of the changes implemented.

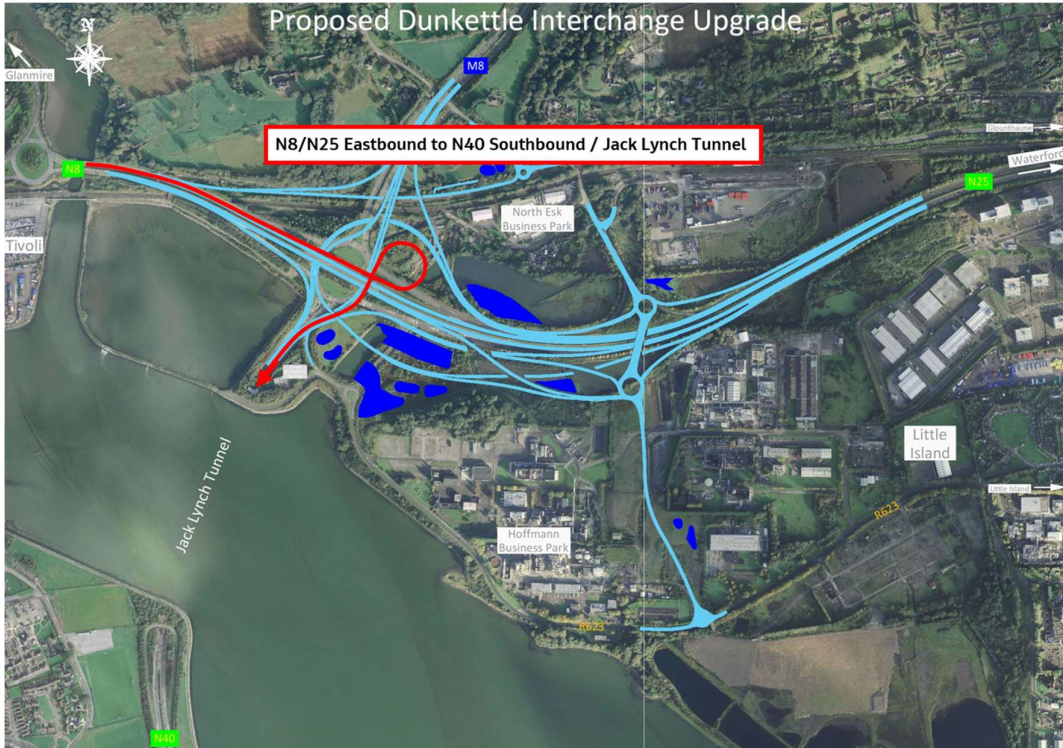
- Traffic routes which will change as a result of the opening on Sunday are summarised as follows:
- N40 Northbound to N25 / N8 Westbound to Cork City Centre (Link B) - see layout plan & video link below.
- N8, Lower Glanmire Road / N25 Eastbound to the Tunnel (Link F) - see layout plan & video link below.
- M8 Southbound to the Tunnel (Link D) - see layout plan & video link below.
- M8 Southbound to N25 / N8 Westbound, Cork City Centre (Link M) - see layout plan & video link below.
- N25 Westbound to the Tunnel (Link K) - see layout plan & video link below.
- N25 Westbound to M8 Northbound - see layout plan & video link below.
- Little Island to the Tunnel (Link L) - see layout plan & video link below.
- N25 Westbound to Little Island (West) (Link J) - see layout plan & video link below
- Little Island to N8 Westbound, Cork City Centre, Lower Glanmire Road (Link M) - see layout plan & video link below.
- Little Island to M8 Northbound (Link M) - see layout plan & video link below.



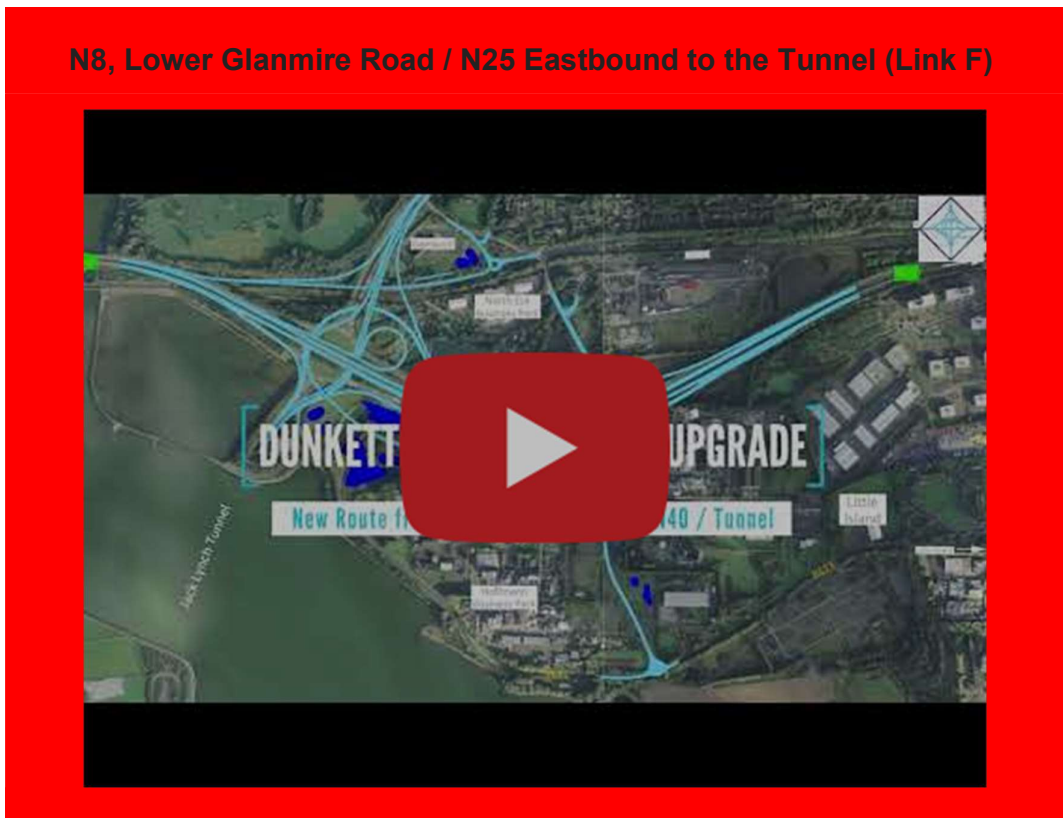


**N40 Northbound to N25 / N8 Westbound to Cork City Centre (Link B)**



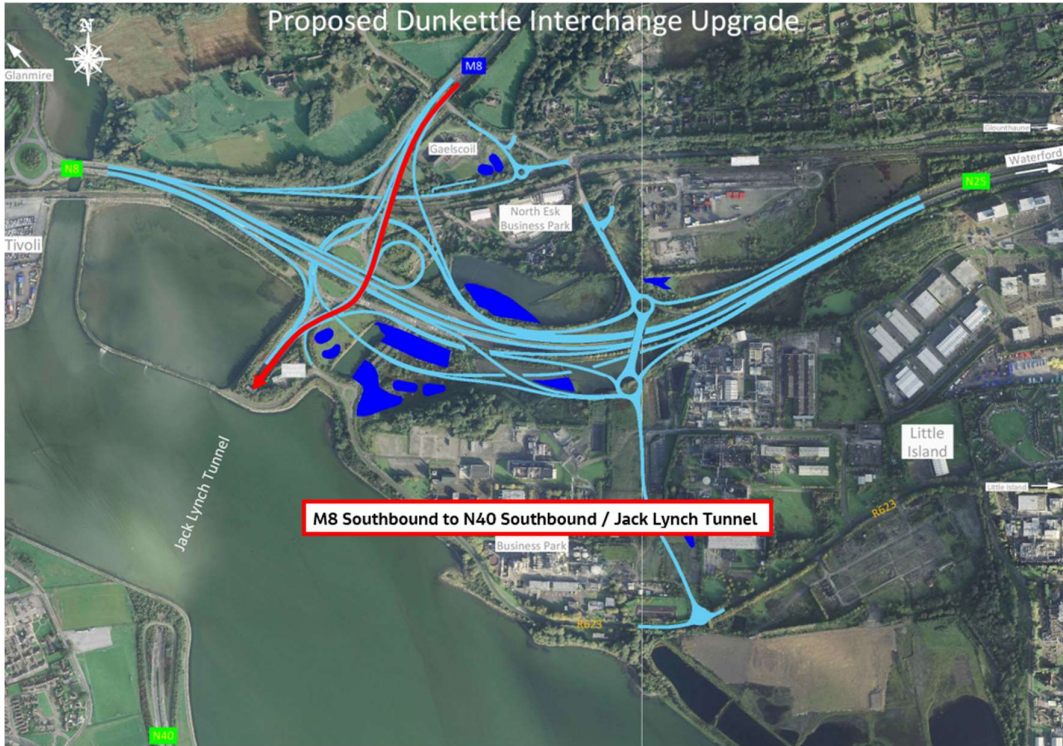


N8, Lower Glanmire Road / N25 Eastbound to the Tunnel (Link F)



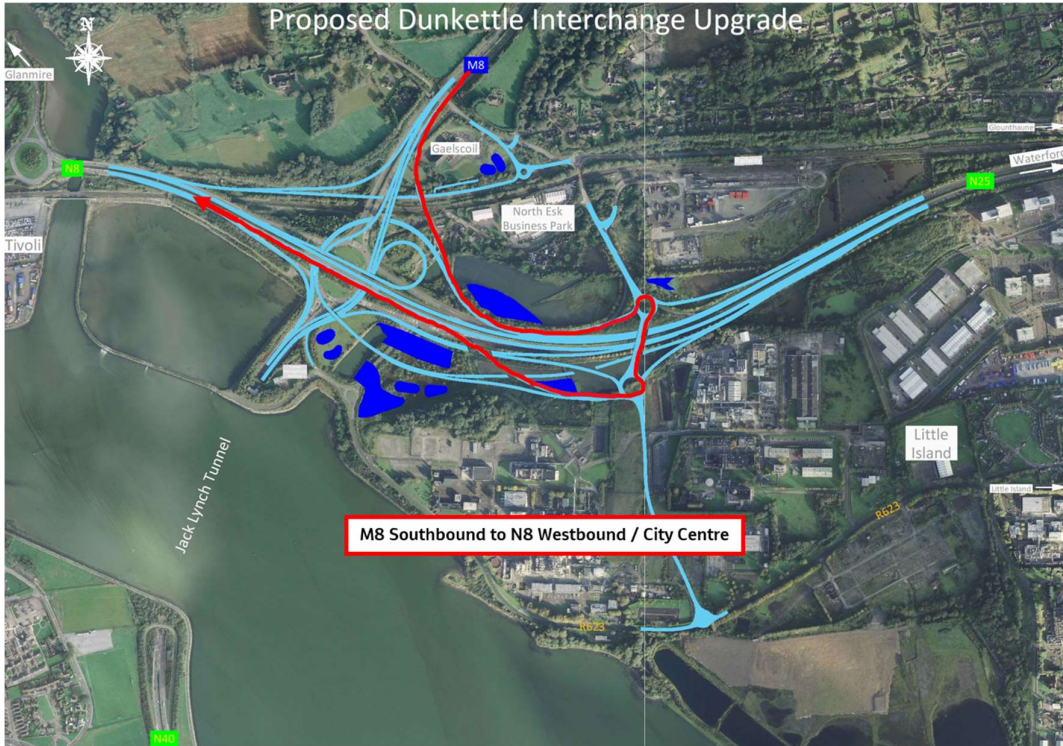
N8, Lower Glanmire Road / N25 Eastbound to the Tunnel (Link F)





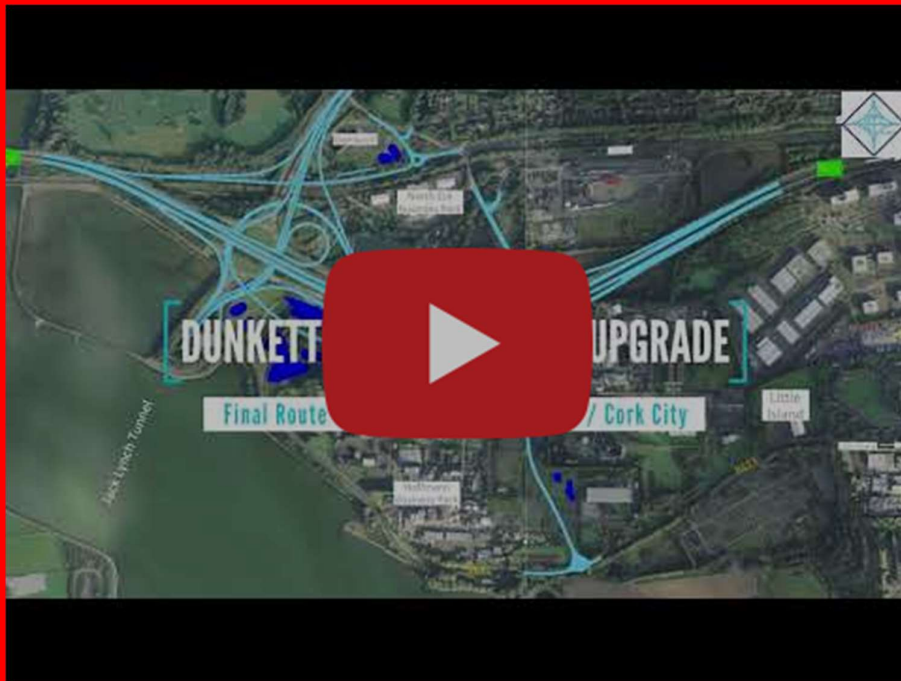
M8 Southbound to the Tunnel (Link D)



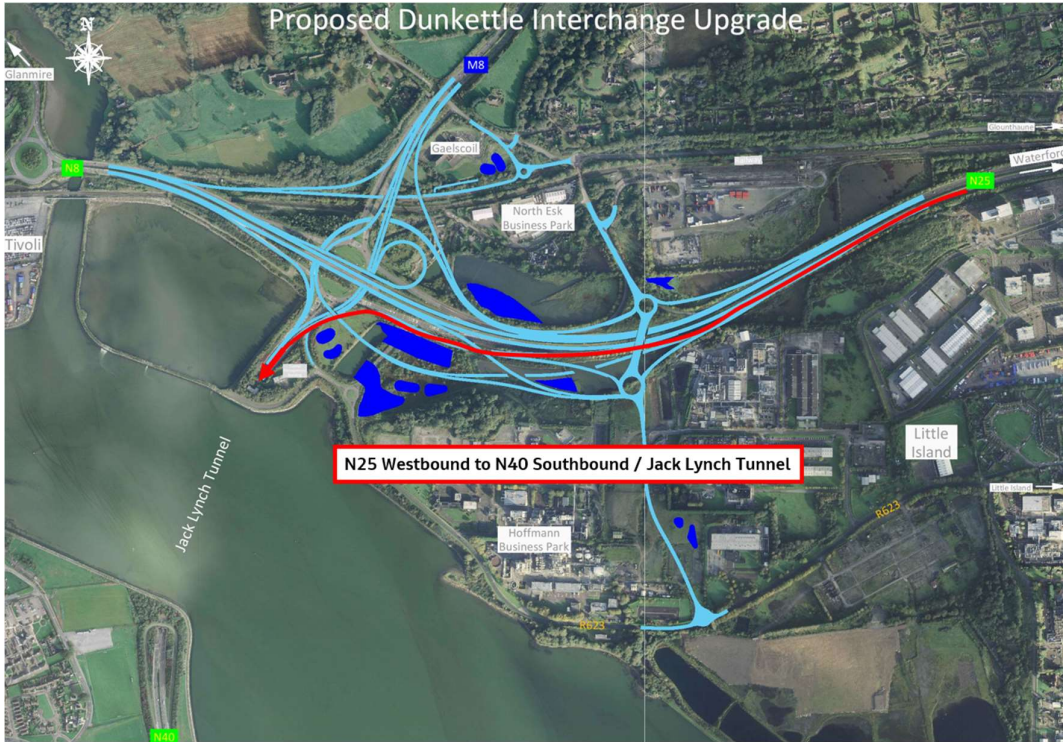


M8 Southbound to N25 / N8 Westbound, Cork City Centre (Link M)

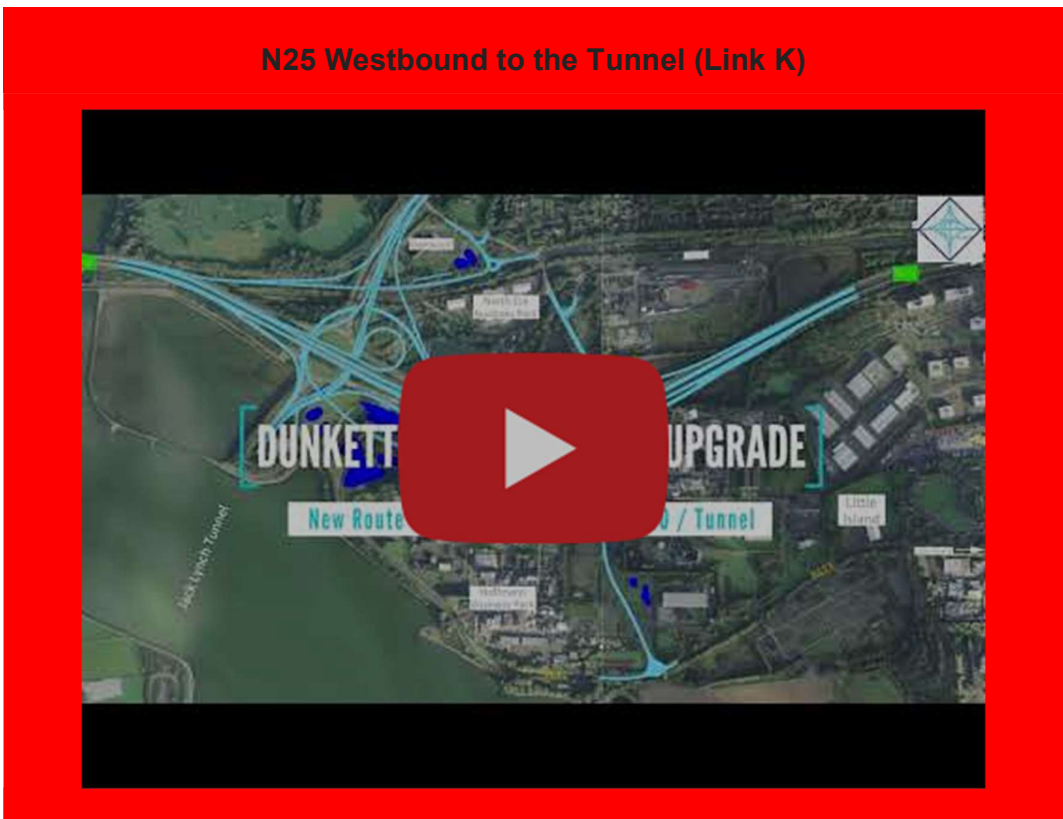
M8 Southbound to N25 / N8 Westbound, Cork City Centre (Link M)



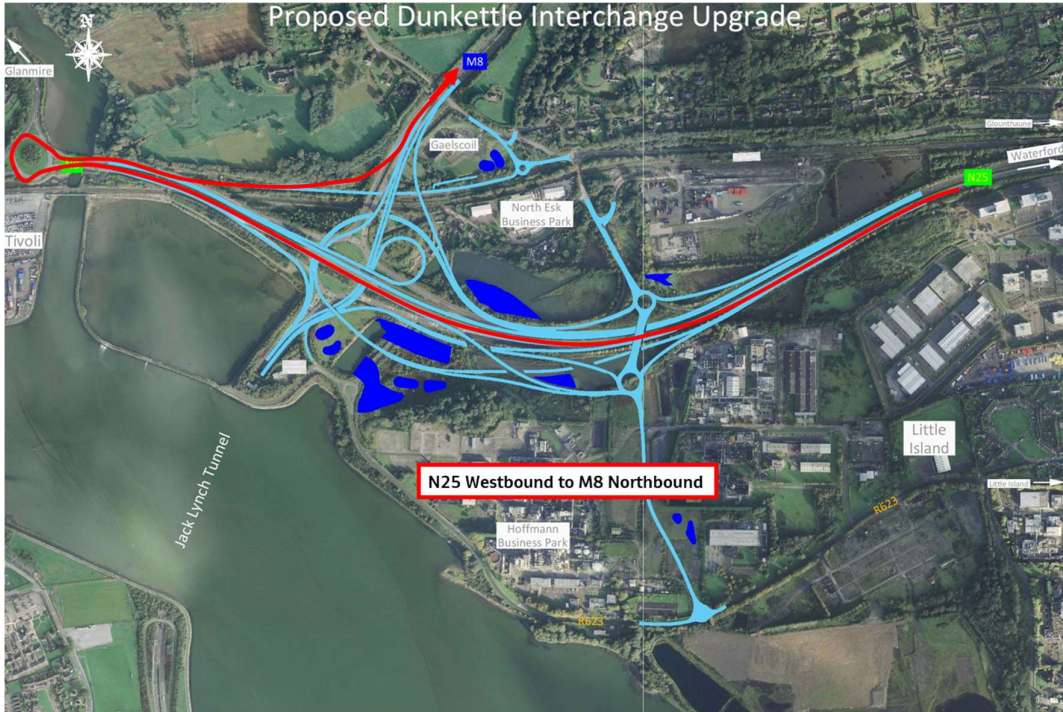




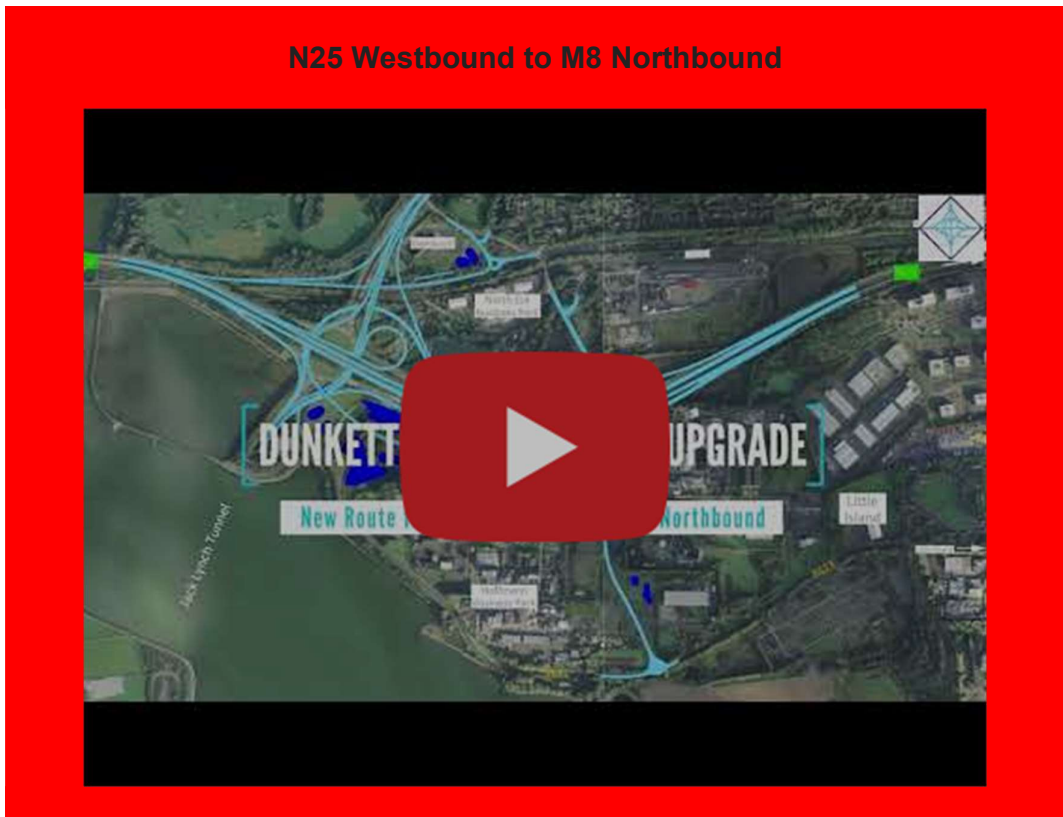
N25 Westbound to the Tunnel (Link K)

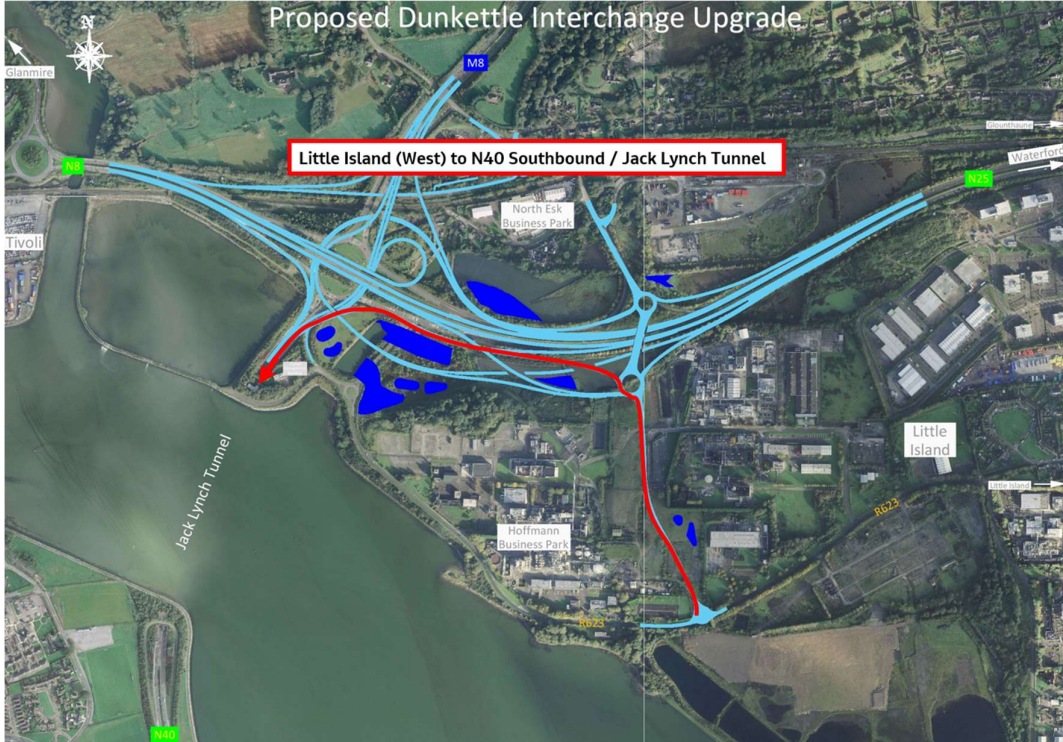






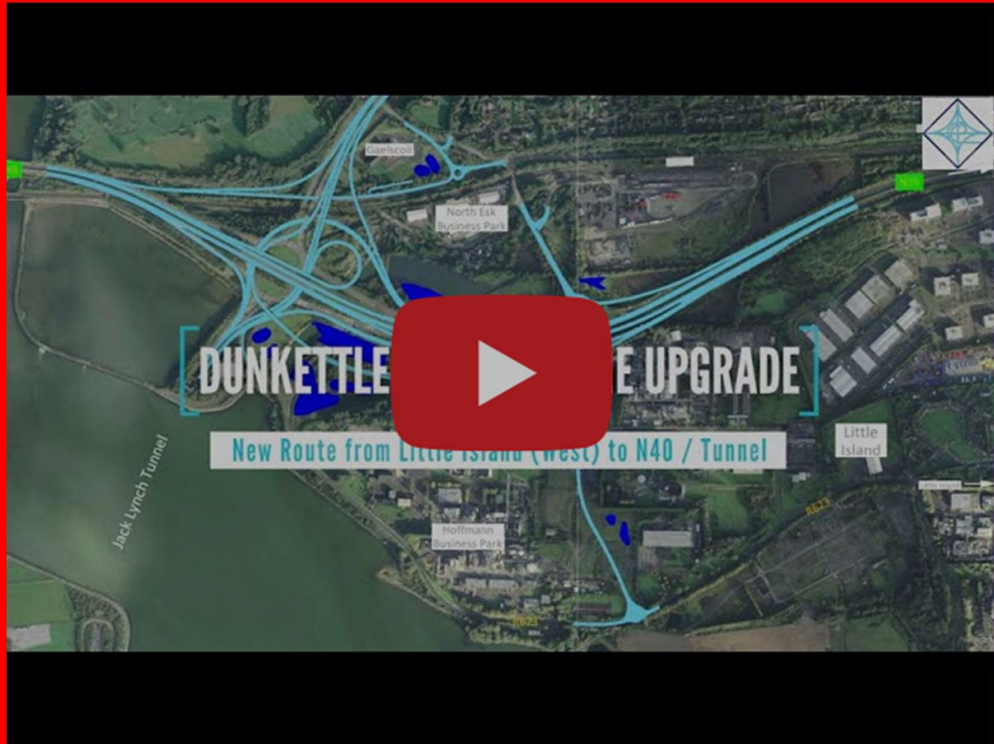
**N25 Westbound to M8 Northbound**



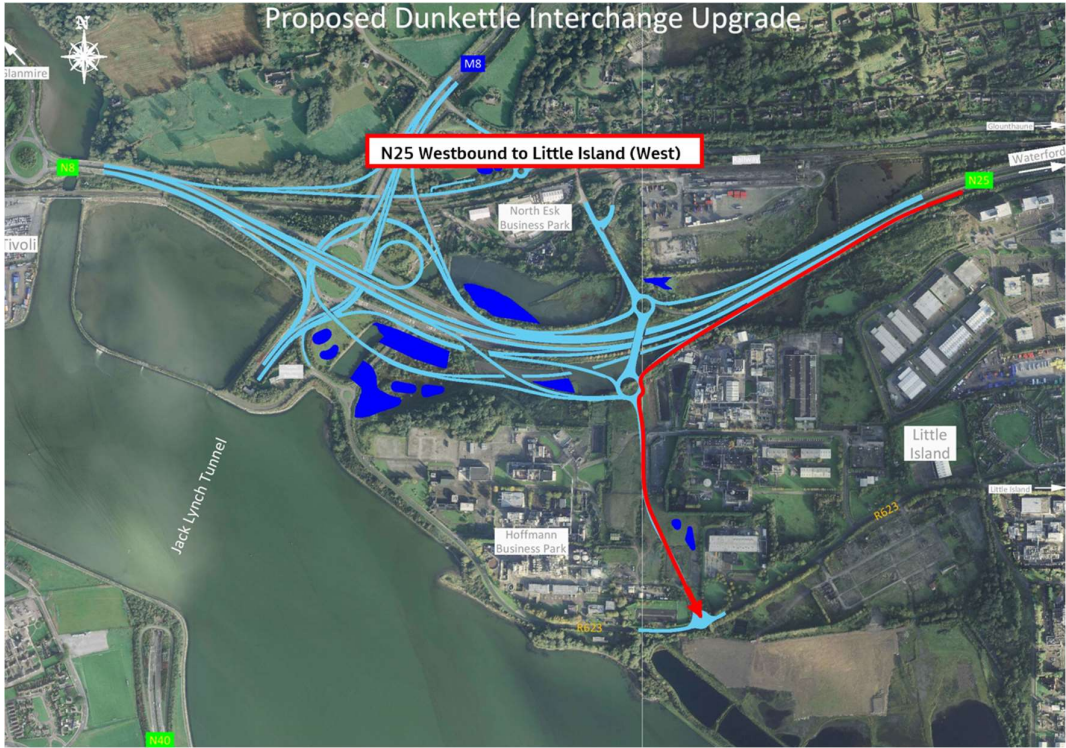


Little Island to the Tunnel (Link L)

## Little Island to the Tunnel (Link L)



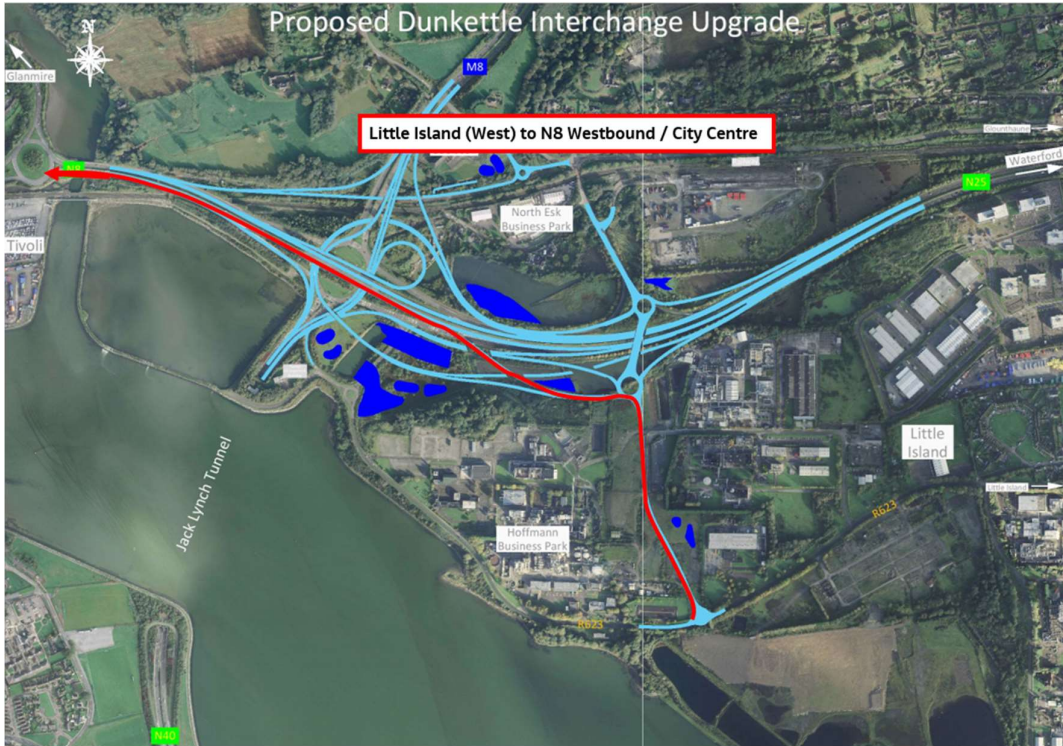




N25 Westbound to Little Island (West) (Link J)

N25 Westbound to Little Island (West) (Link J)



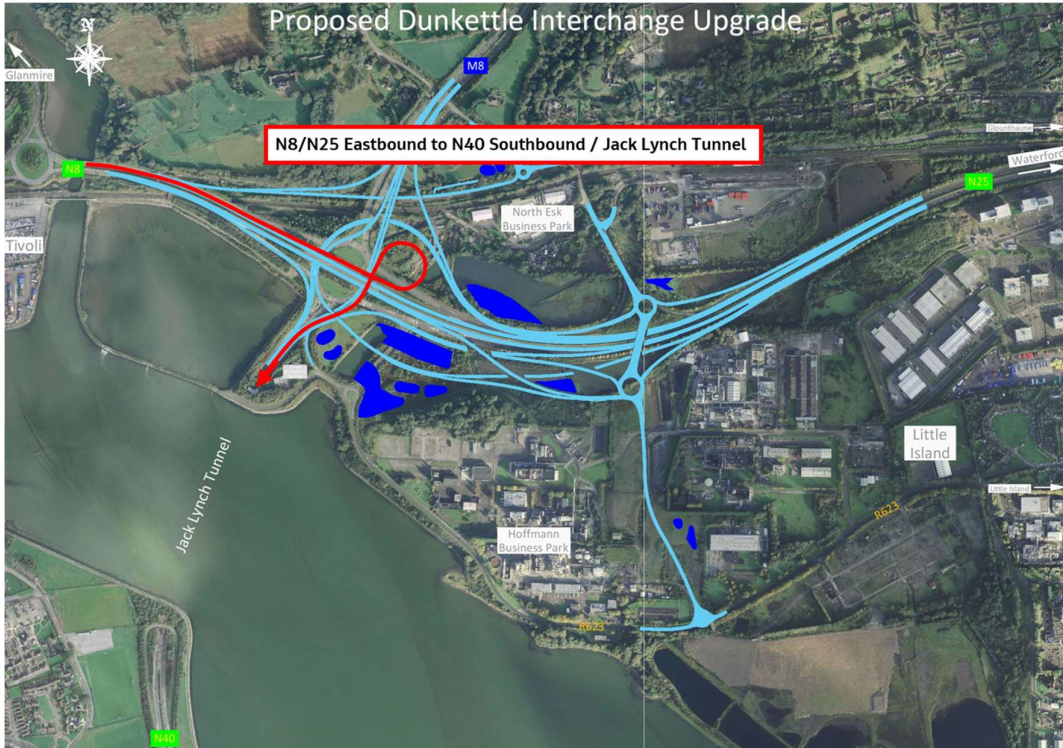


Little Island to N8 Westbound, Cork City Centre, Lower Glanmire Road  
(Link M)

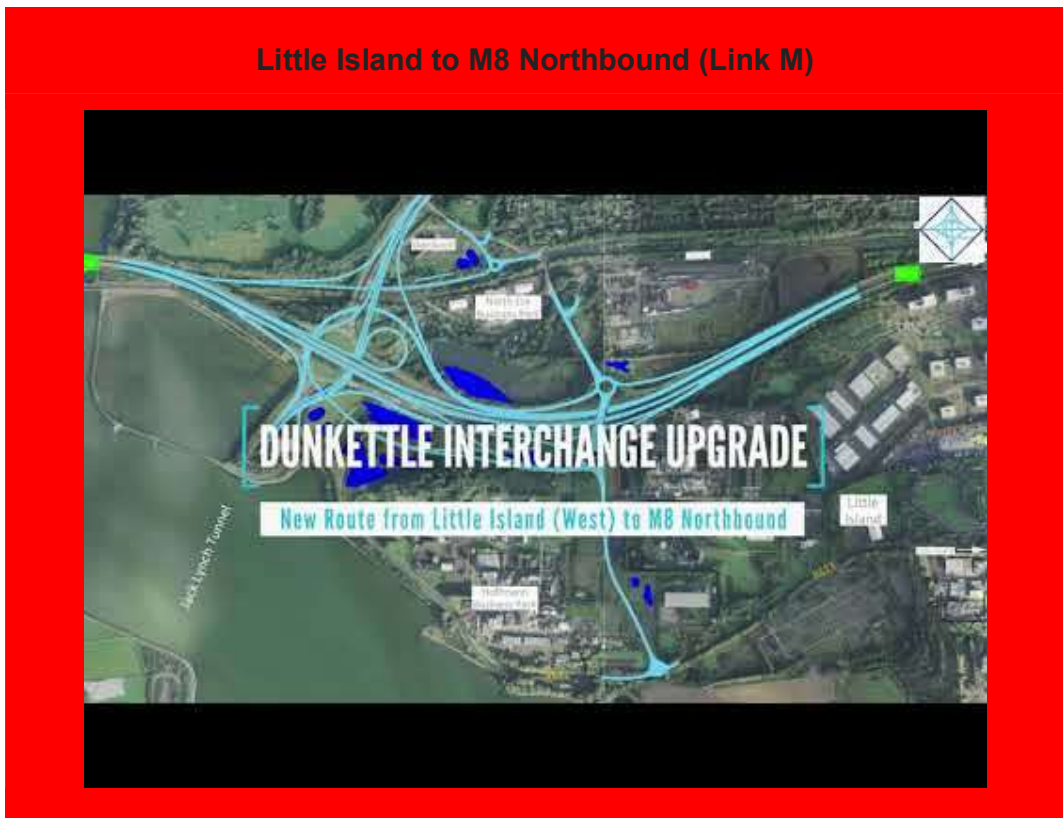


Little Island to N8 Westbound, Cork City Centre, Lower Glanmire Road (Link M)





Little Island to M8 Northbound (Link M)



Little Island to M8 Northbound (Link M)

- The patience and cooperation of the motoring public is very much appreciated and continued patience and cooperation is asked for as the new layouts become established over the coming days.

- As always, please contact us at any time if you have any queries/comments/concerns in relation to the ongoing works.





# Dunkettle Live Traffic App



Click on the icon above to see the benefits of the Dunkettle Live App.



Dunkettle Live App: Download from [Apple App store](#) or from [Google Play store](#)

---

As always, if there are any queries or comments in relation to these works, please contact us at:  
**Phone:** 1800 810077 (at any time), **Email:** [roadconstruction@ccc-site.com](mailto:roadconstruction@ccc-site.com).



Further information on the Dunkettle Scheme can be accessed [www.dunkettle.ie](http://www.dunkettle.ie).

Real time traffic information can be accessed via [www.dunkettletraffic.ie](http://www.dunkettletraffic.ie) or on the Dunkettle Live App ([Apple App store](#) and [Google Play store](#)).

New subscribers to the newsletter can register: [www.dunkettle.ie/newslettersignup](http://www.dunkettle.ie/newslettersignup)



[More at www.Dunkettle.ie](http://www.Dunkettle.ie)



---

Your email address is on a list that we use to keep you informed on the progress on the N40 and Dunkettle Interchange works.

Want to change how you receive these emails?

You can [update your preferences](#) or [unsubscribe from this list](#).

---