

Dunkettle Progress Update

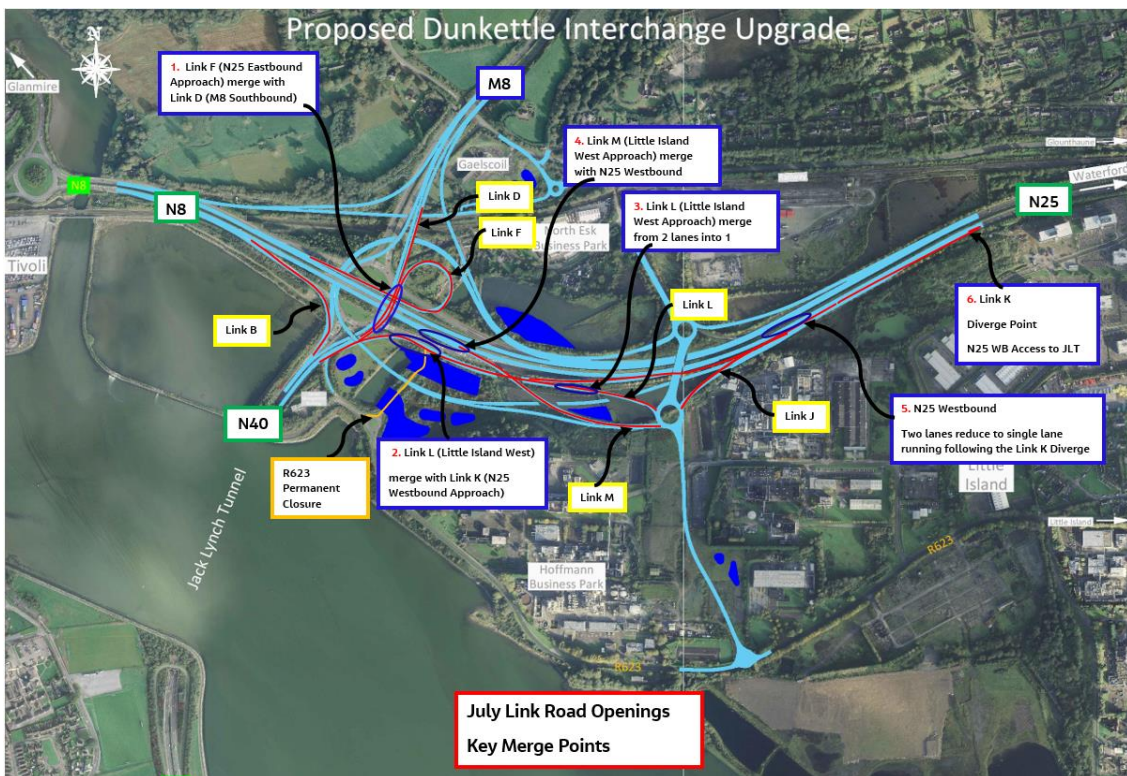
11th July 2023



Twitter

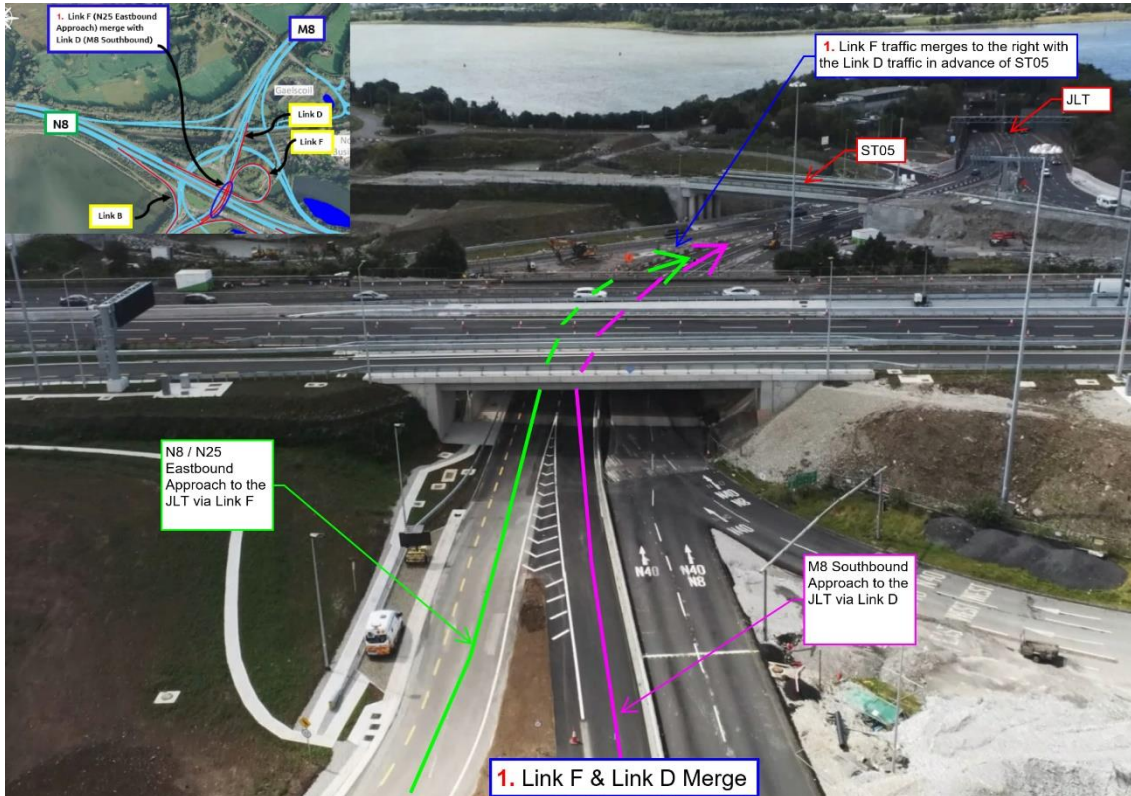


Website

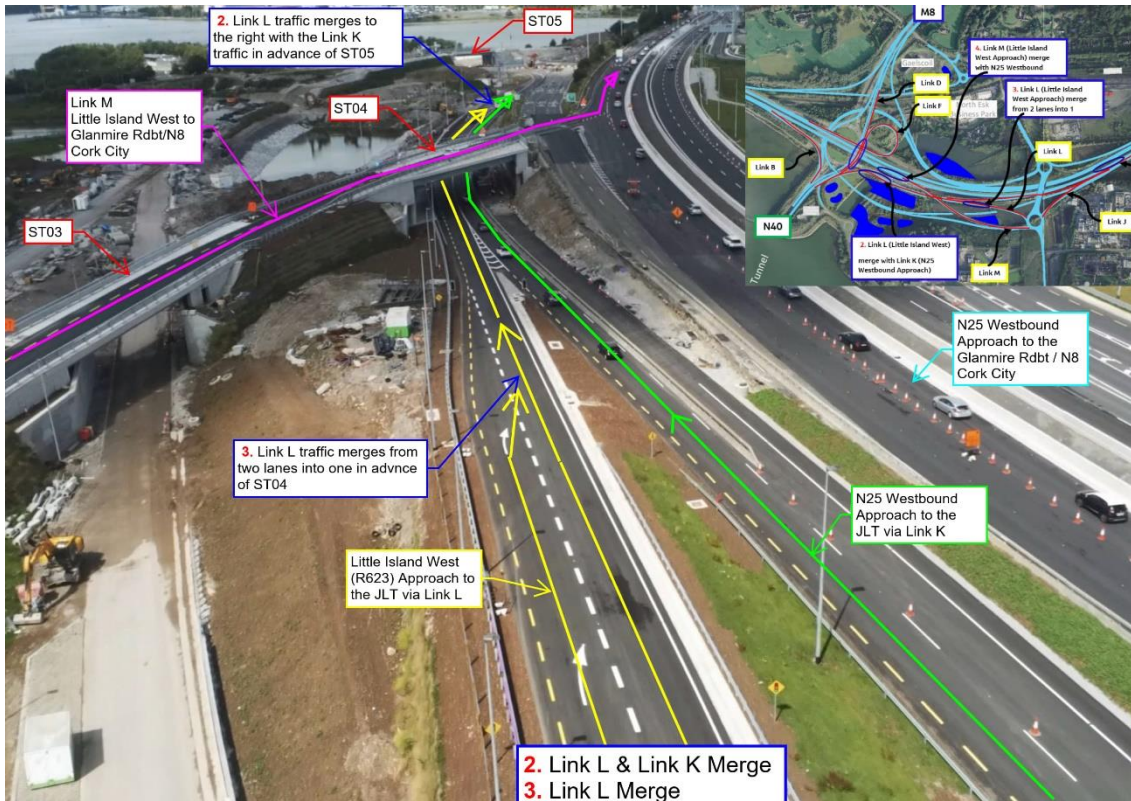


- The new layout is now becoming established for regular commuters using the Dunkettle Interchange. There are a number of new merge

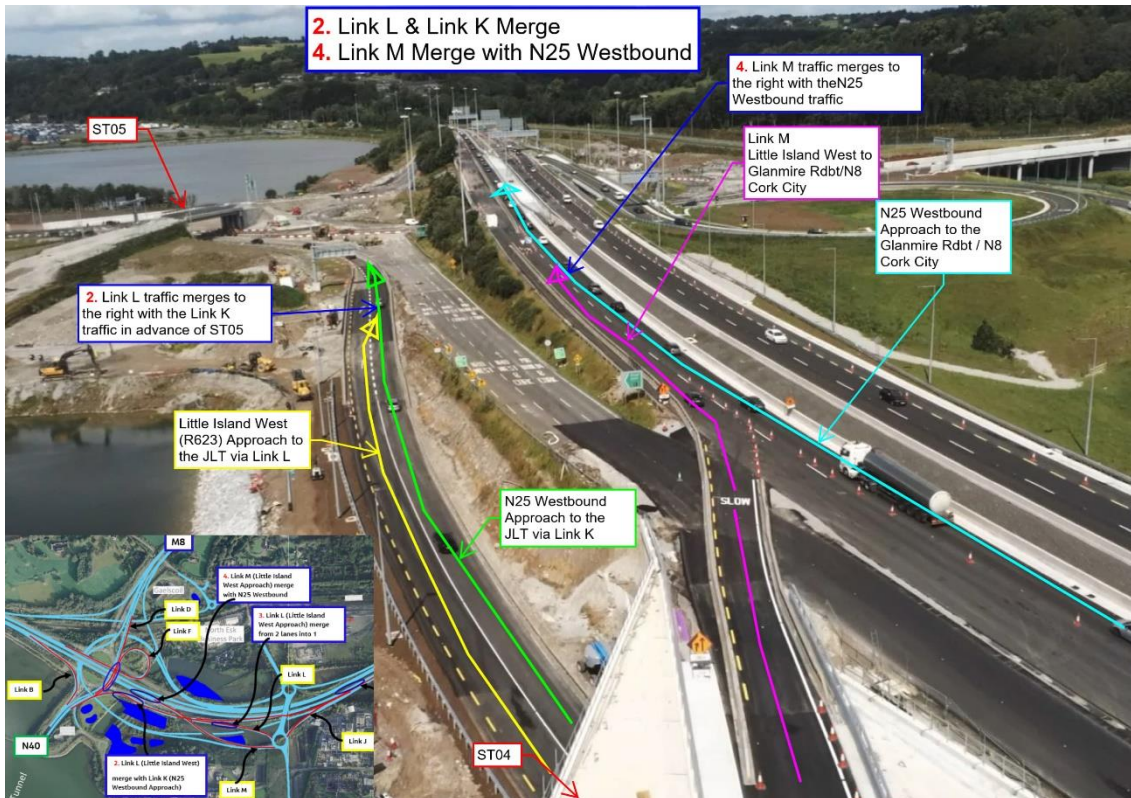
points on the Scheme which motorists need to make themselves aware of as highlighted in the layout plan above and photographs below.



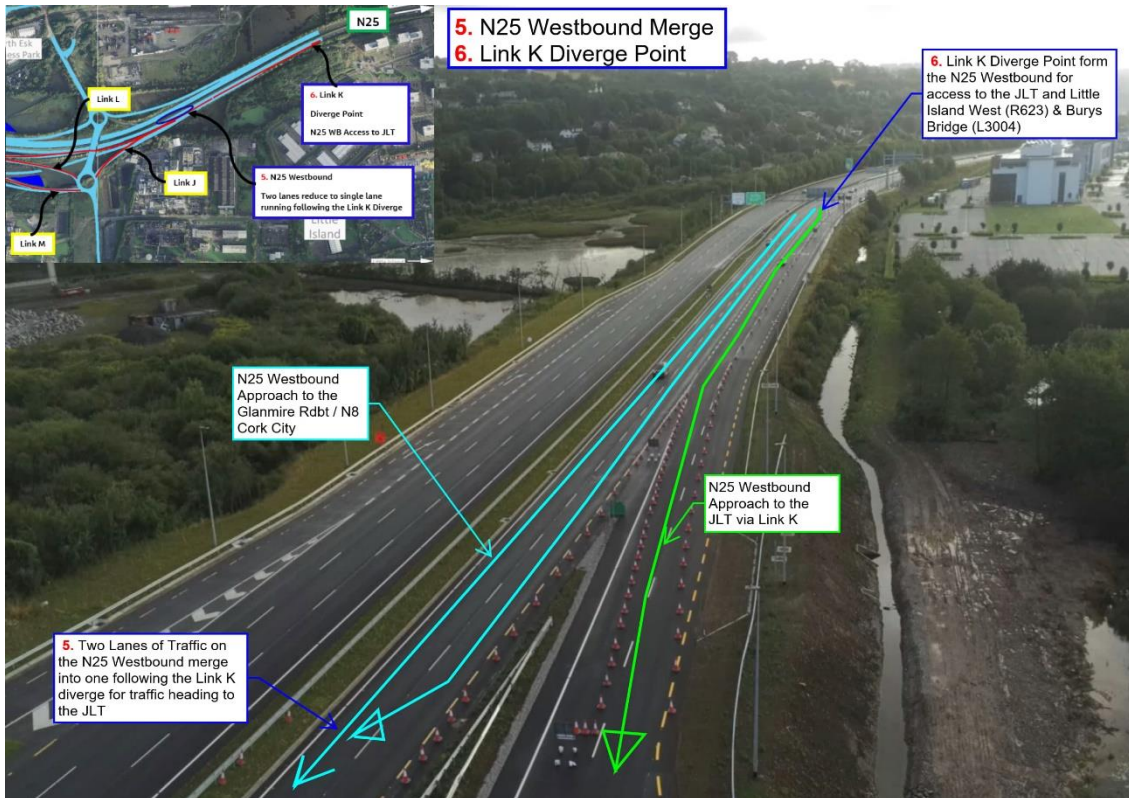
M8 Southbound (Link D) Merge Area with N8 / City (Link F) traffic heading to the Jack Lynch Tunnel / N40 Westbound



Little Island (West) (Link L) Merge Area with N25 Westbound (Link K) traffic heading to the Jack Lynch Tunnel / N40 Westbound



Little Island (West) (Link M) Merge Area with N25 Westbound (Link K) traffic heading to the N8, Cork City, Lower Glanmire Road

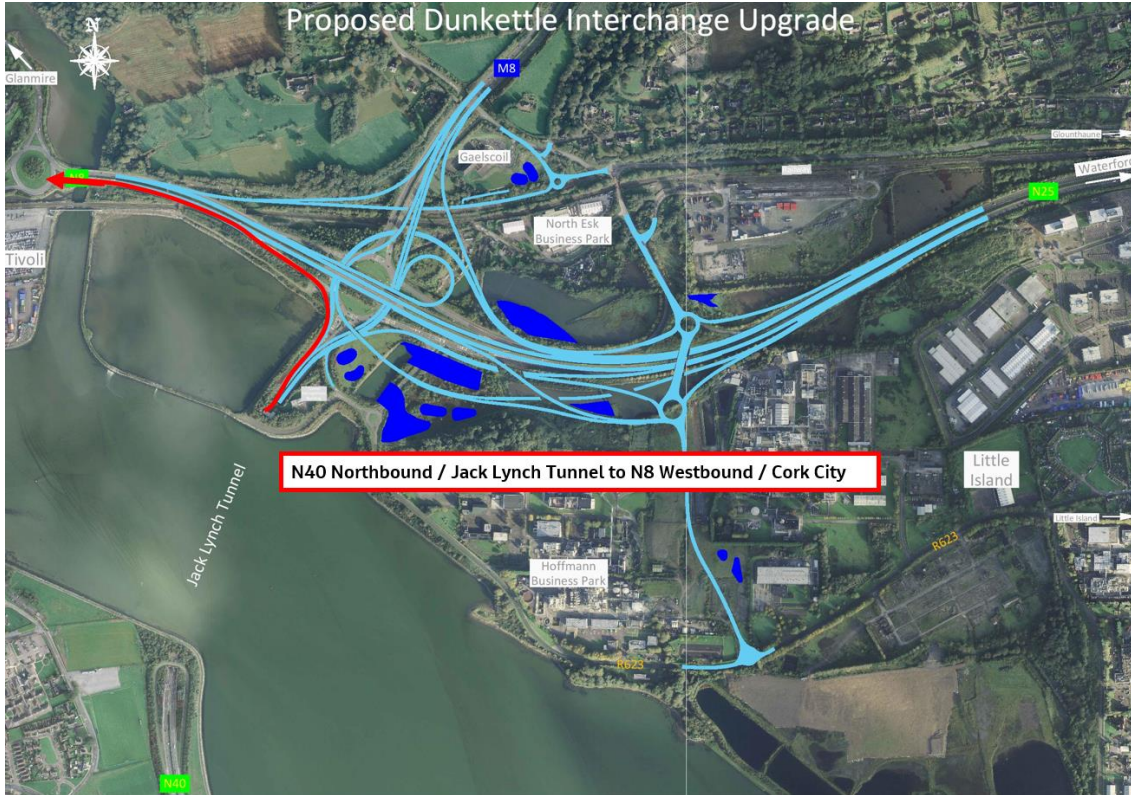


Link K Diverge from the N25 Westbound for the Jack Lynch Tunnel / N40 Westbound & N25 Westbound Traffic Merge into one lane.

- With the new link roads opened, we have updated our link by link videos and the new videos are now available as detailed hereunder:

- N40 Northbound to N25 / N8 Westbound to Cork City Centre (Link B) - see layout plan & video link below.
- N8, Lower Glanmire Road / N25 Eastbound to the Tunnel (Link F) - see layout plan & video link below.
- M8 Southbound to the Tunnel (Link D) - see layout plan & video link below.

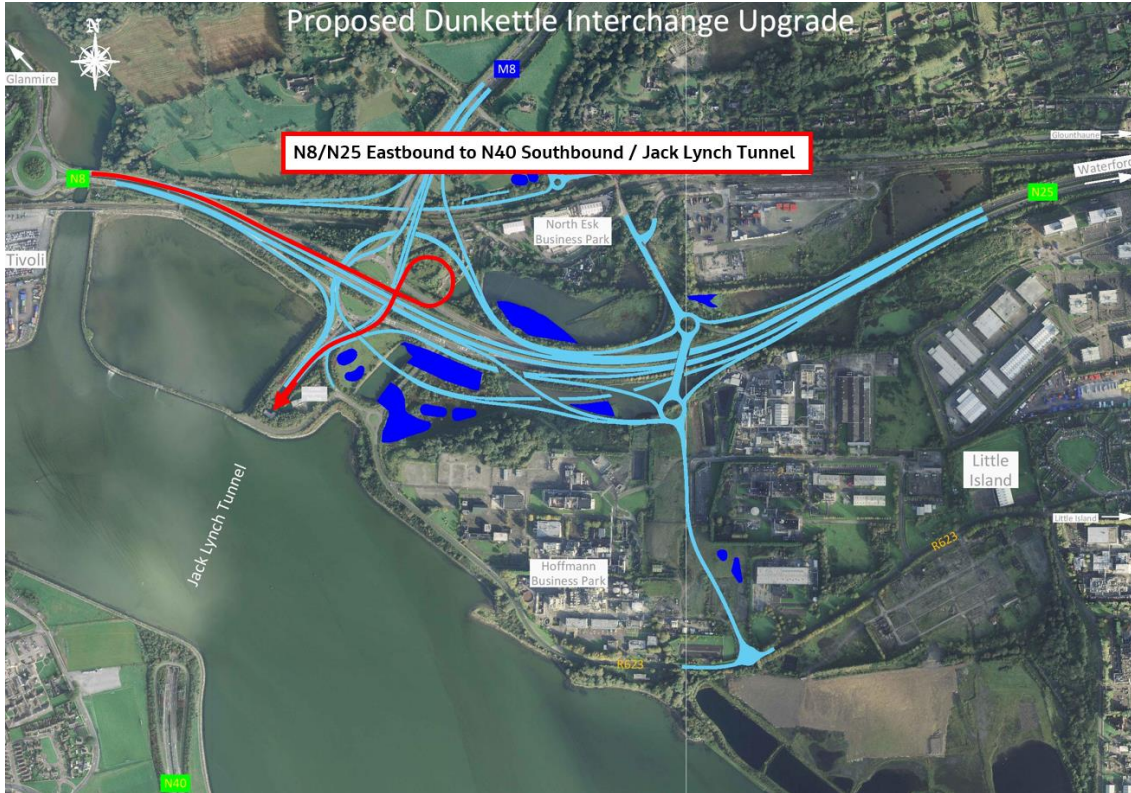
- M8 Southbound to N25 / N8 Westbound, Cork City Centre (Link M) - see layout plan & video link below.
- N25 Westbound to the Tunnel (Link K) - see layout plan & video link below.
- N25 Westbound to M8 Northbound - see layout plan & video link below.
- Little Island to the Tunnel (Link L) - see layout plan & video link below.
- N25 Westbound to Little Island (West) (Link J) - see layout plan & video link below
- Little Island to N8 Westbound, Cork City Centre, Lower Glanmire Road (Link M) - see layout plan & video link below.
- Little Island to M8 Northbound (Link M) - see layout plan & video link below.



N40 Northbound to N25 / N8 Westbound to Cork City Centre (Link B)

N40 Northbound to N25 / N8 Westbound to Cork City Centre (Link B)

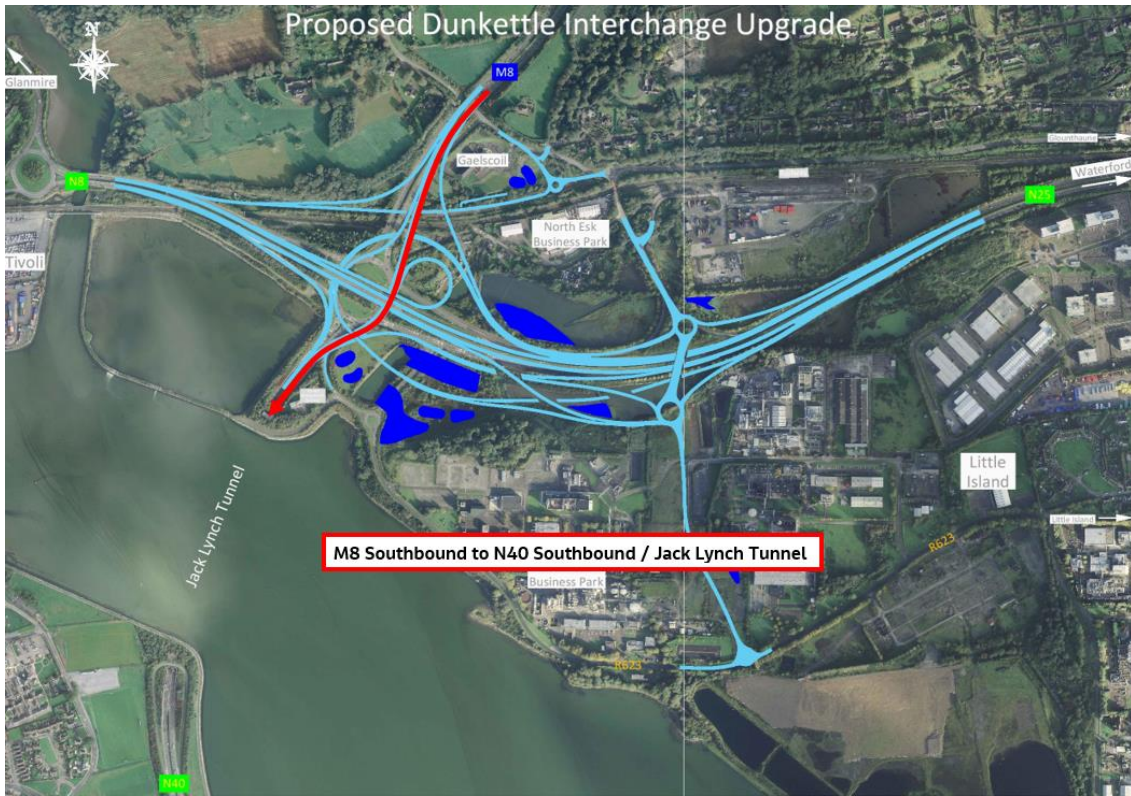




N8, Lower Glanmire Road / N25 Eastbound to the Tunnel (Link F)

N8, Lower Glanmire Road / N25 Eastbound to the Tunnel (Link F)

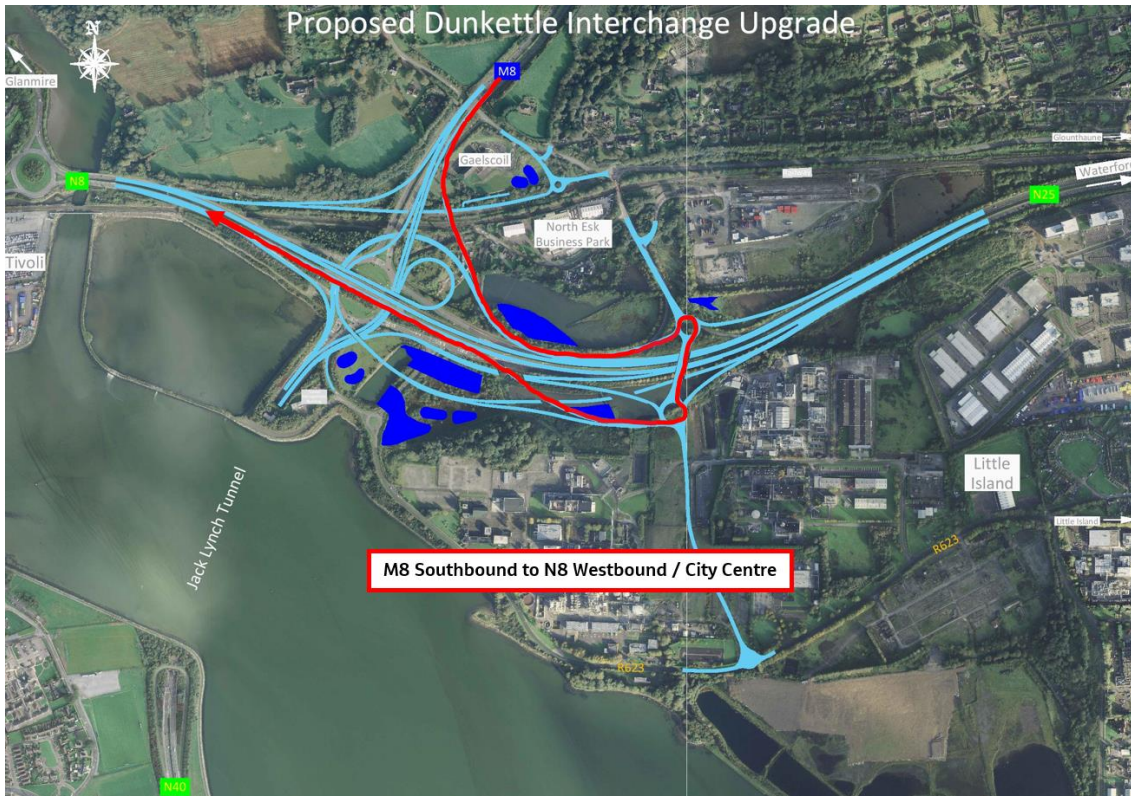




M8 Southbound to the Tunnel (Link D)

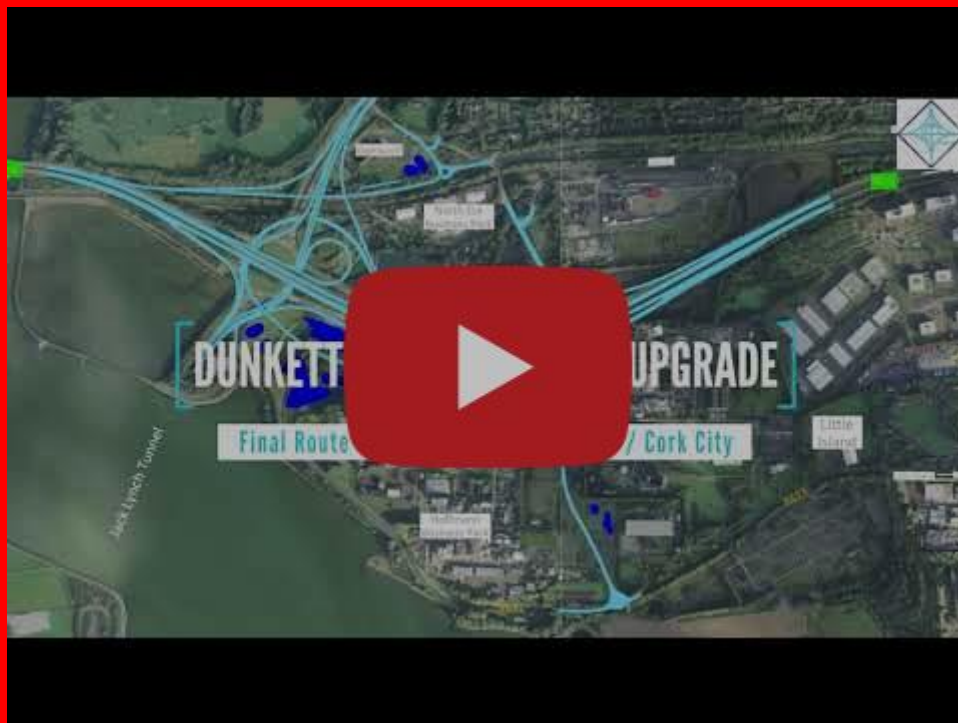
M8 Southbound to the Tunnel (Link D)

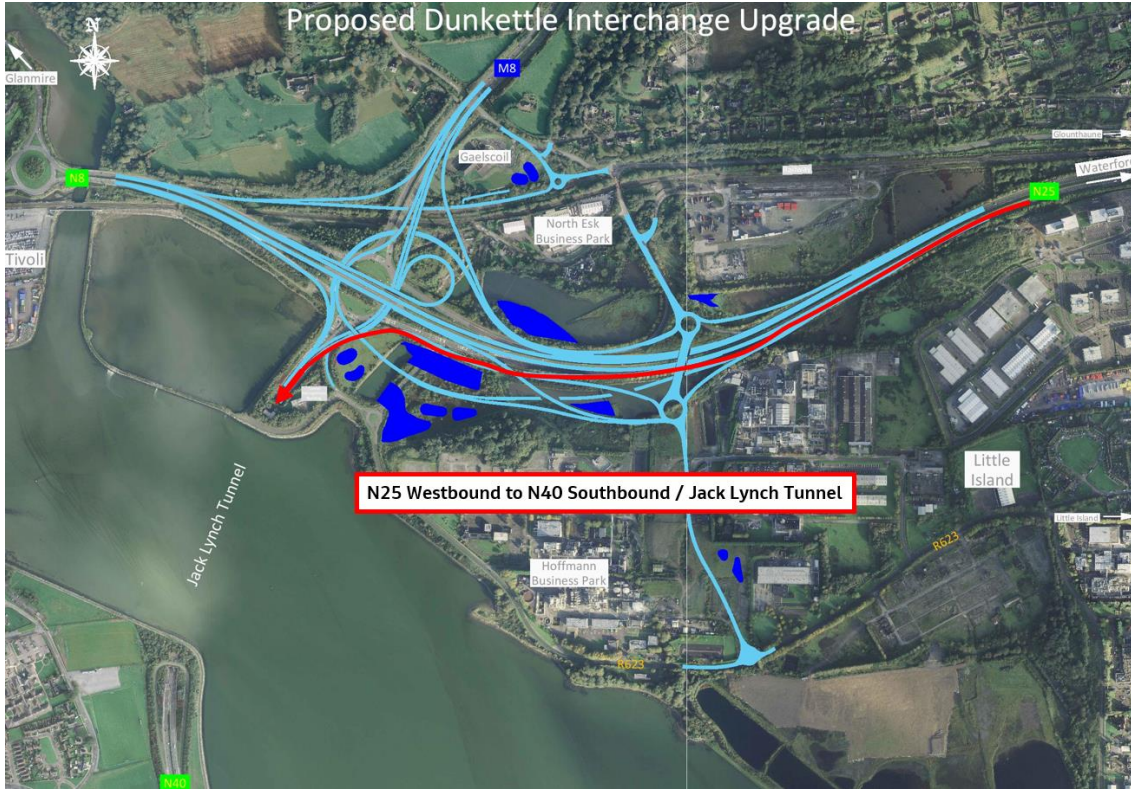




M8 Southbound to N25 / N8 Westbound, Cork City Centre (Link M)

M8 Southbound to N25 / N8 Westbound, Cork City Centre (Link M)

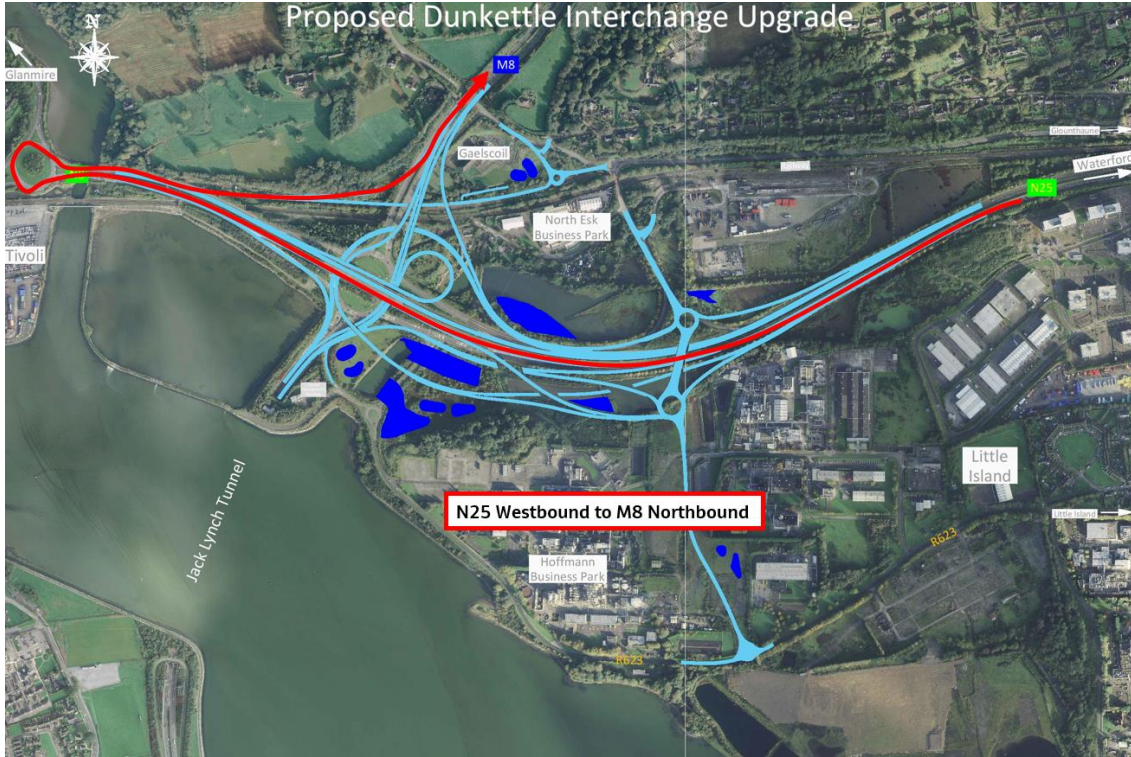




N25 Westbound to the Tunnel (Link K)

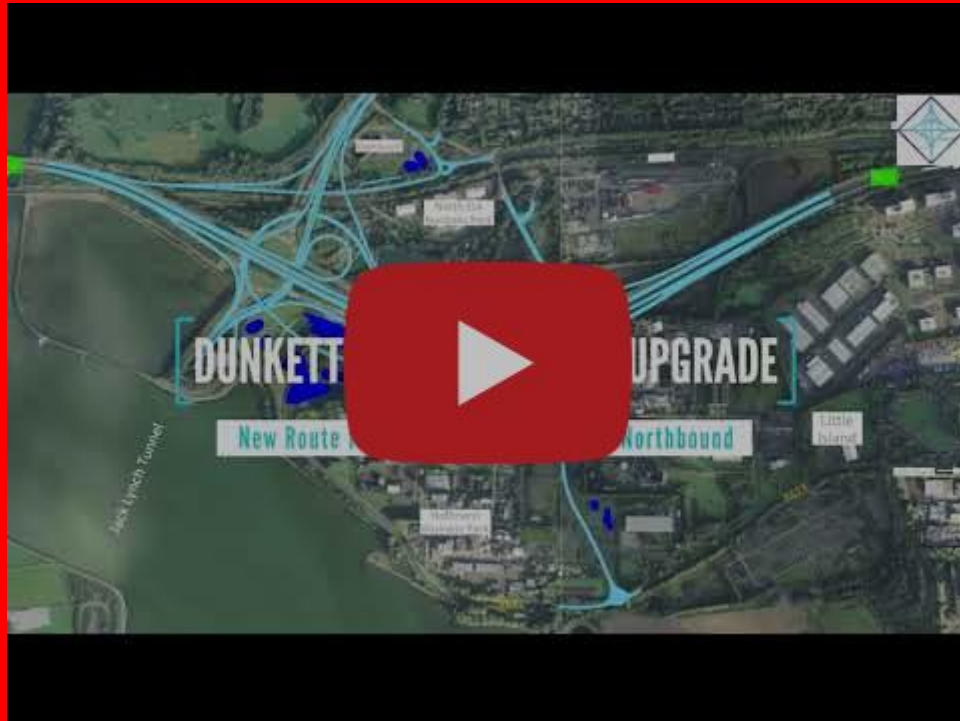
N25 Westbound to the Tunnel (Link K)

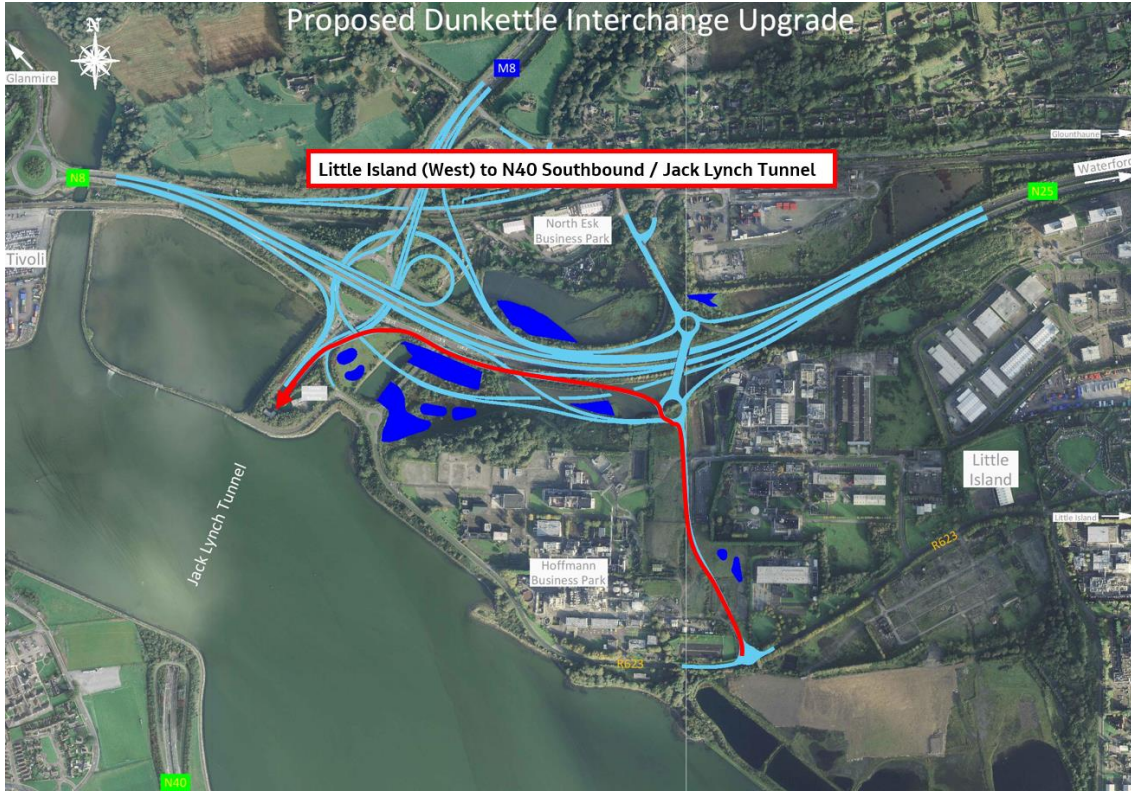




N25 Westbound to M8 Northbound

N25 Westbound to M8 Northbound

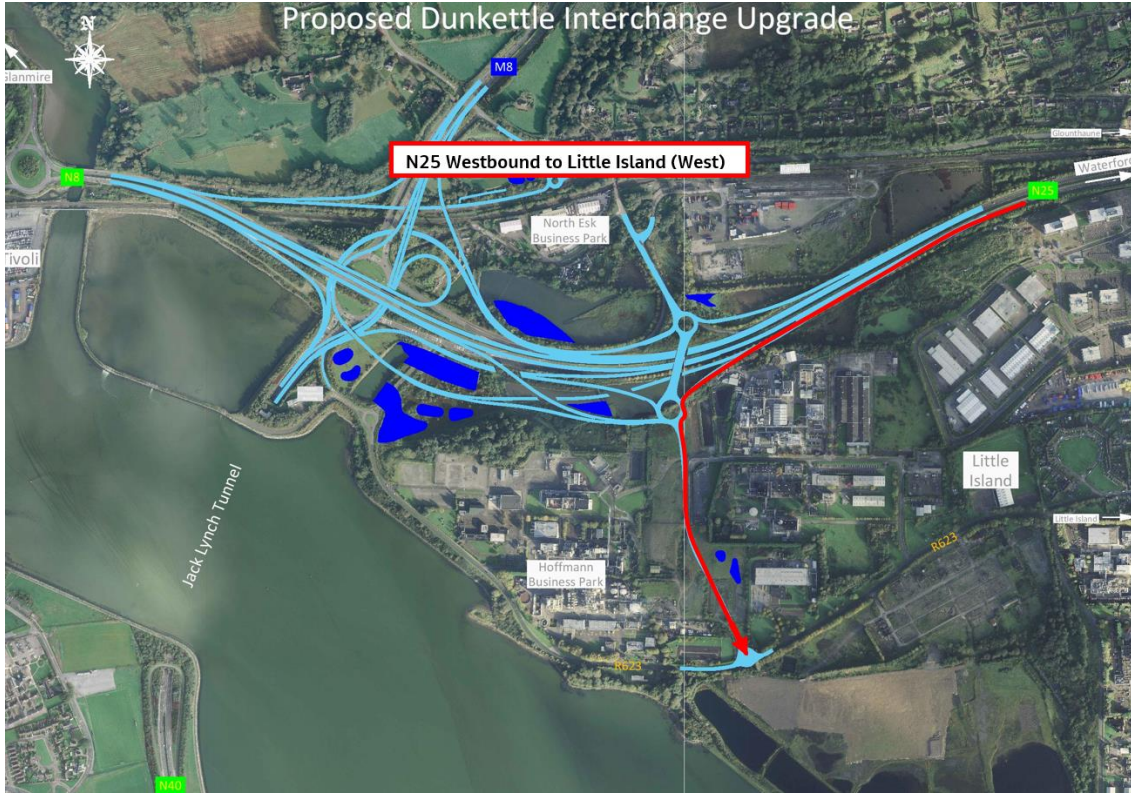




Little Island to the Tunnel (Link L)

Little Island to the Tunnel (Link L)

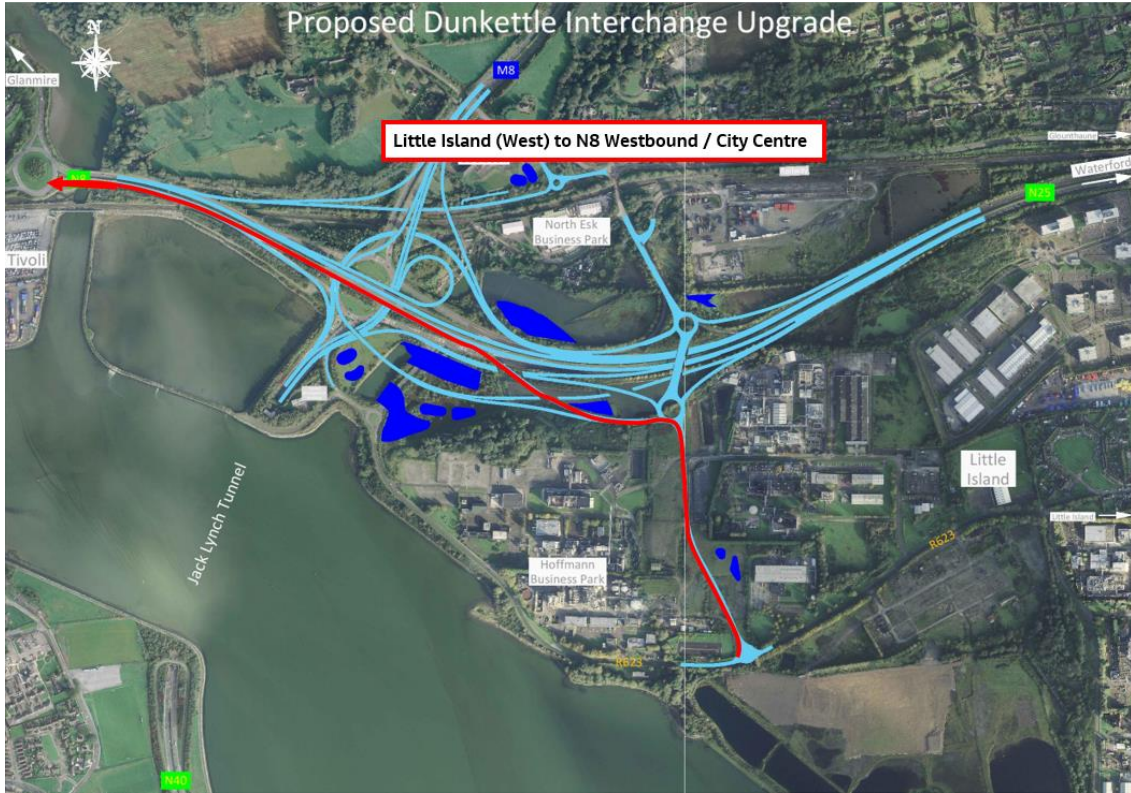




N25 Westbound to Little Island (West) (Link J)

N25 Westbound to Little Island (West) (Link J)

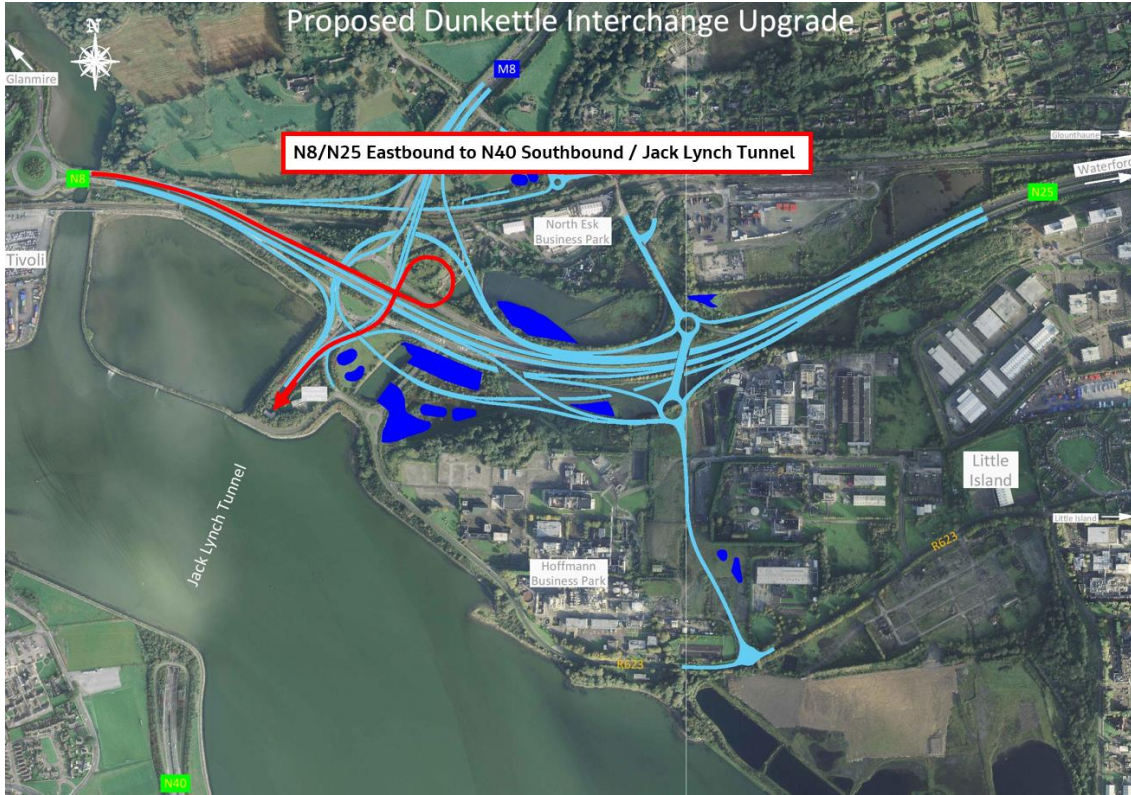




**Little Island to N8 Westbound, Cork City Centre, Lower Glanmire Road
(Link M)**

Little Island to N8 Westbound, Cork City Centre, Lower Glanmire Road (Link M)





Little Island to M8 Northbound (Link M)

Little Island to M8 Northbound (Link M)



- In order to help ensure the safety of all road users and the safety of construction personnel, we are again asking motorists to pay particular attention to the posted speed limits across the Dunkettle site. Motorists are also asked to pay particular attention to the temporary and permanent directional signage across the site noting the scale of the changes implemented.

- As always, please contact us at any time if you have any queries/comments/concerns in relation to the ongoing works.

Dunkettle Live Traffic App



Click on the icon above to see the benefits of the Dunkettle Live App.



Dunkettle Live App: Download from [Apple App store](#) or from [Google Play store](#)

As always, if there are any queries or comments in relation to these works, please contact us at:

Phone: 1800 810077 (at any time), **Email:** roadconstruction@ccc-site.com.

Further information on the Dunkettle Scheme can be accessed www.dunkettle.ie.

Real time traffic information can be accessed via www.dunkettletraffic.ie or on the Dunkettle Live App ([Apple App store](#) and [Google Play store](#)).

New subscribers to the newsletter can register: www.dunkettle.ie/newslettersignup



[More at www.Dunkettle.ie](http://www.Dunkettle.ie)



Your email address is on a list that we use to keep you informed on the progress on the N40 and Dunkettle Interchange works.

Want to change how you receive these emails?

You can [update your preferences](#) or [unsubscribe from this list](#).
