

Dunkettle Progress Update

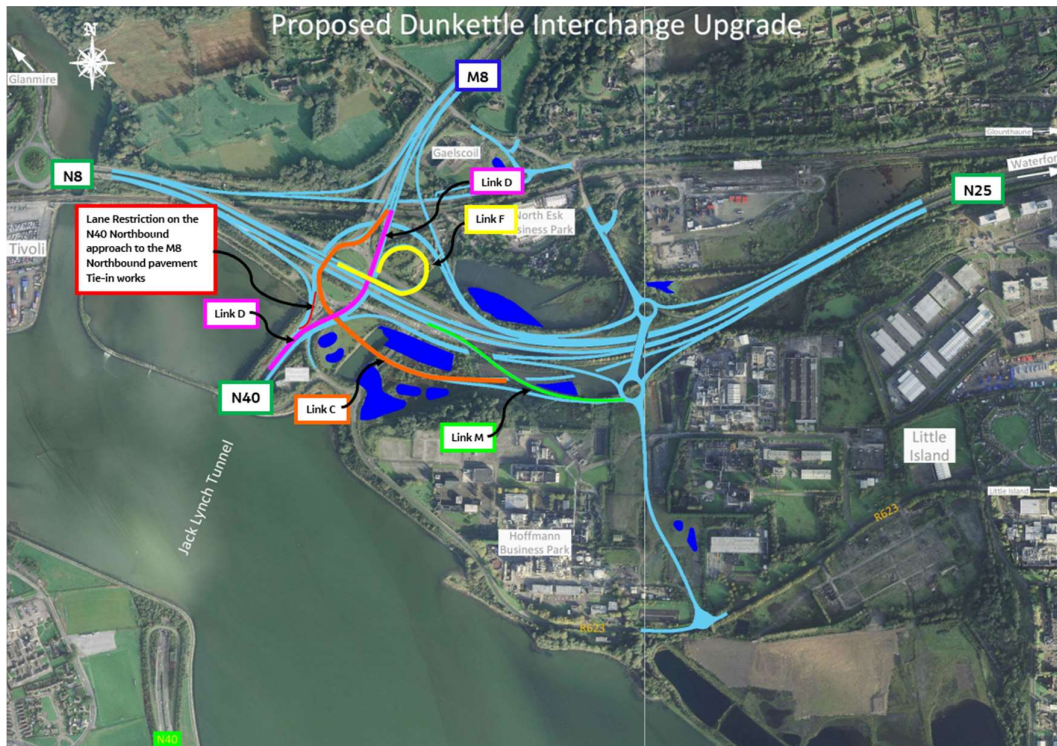
14th July 2023



[Twitter](#)



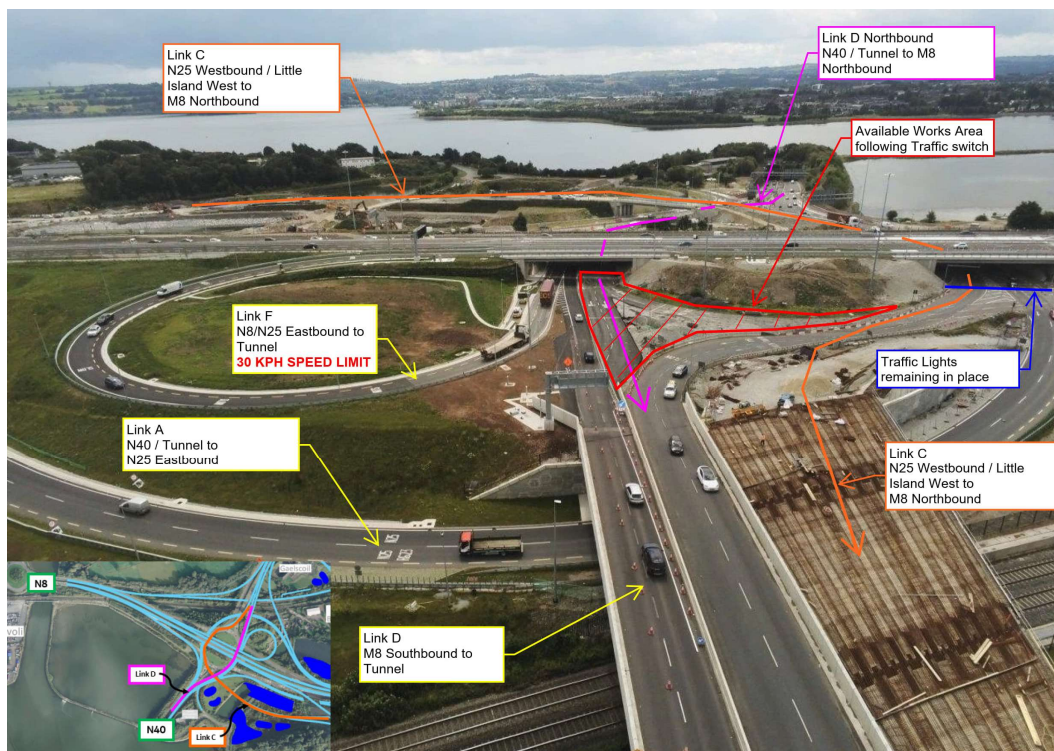
[Website](#)



- Speed control measures are in place across the site in order to ensure the safety of the workers on site and also the road users.

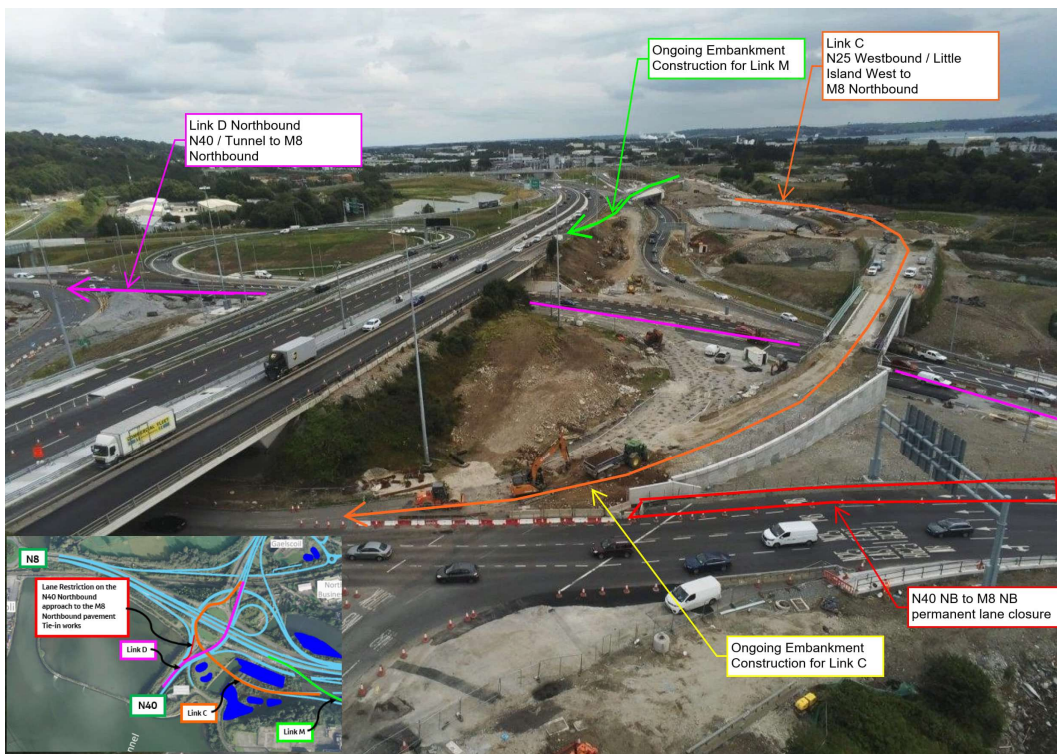
- Following the traffic switch on Sunday last 9th July 2023, Works are now underway in the new works areas which have become available.

- Link D Northbound will be progressed over the coming period with excavation works due to get underway imminently. Once complete, traffic from the N40 northbound wishing to head to the M8 Northbound will be switched to this alignment which will allow works for Link C to be further progressed thereafter – see photograph below..



Upcoming Works for Link D following the closure of the Northern half of the old Dunkettle Interchange Roundabout

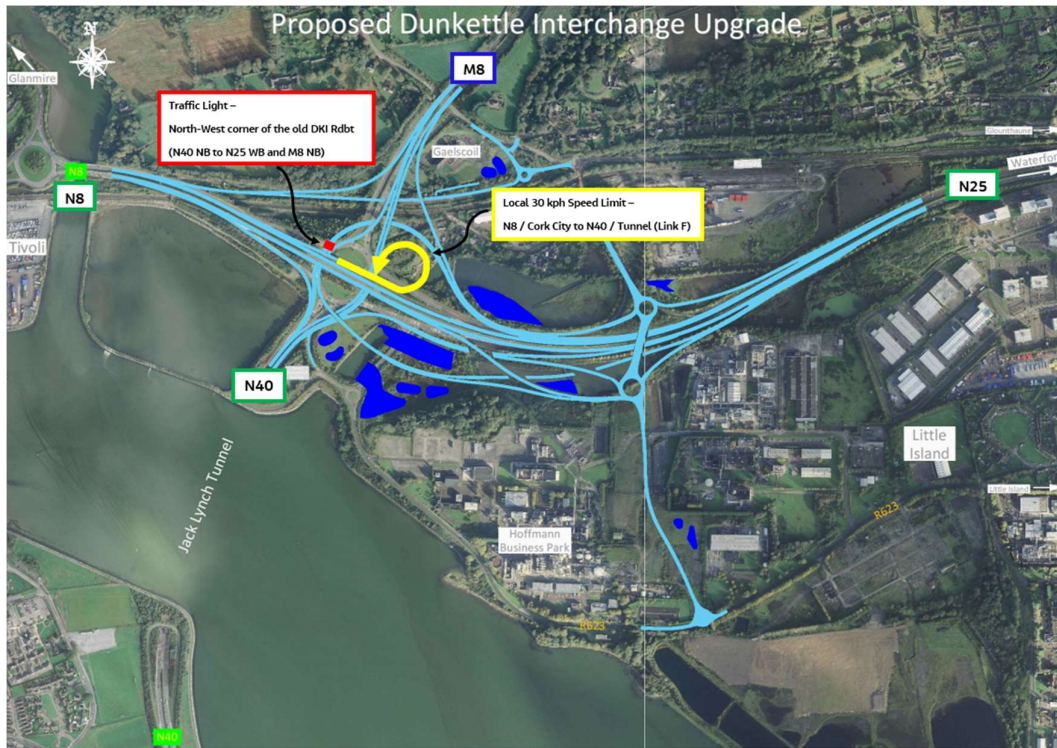
- The construction of the Link C embankment on the footprint of the old Dunkettle Interchange Roundabout is now well underway. In order to complete these works, the short right hand lane, on the N40 Northbound approach from the Tunnel has been closed. Link M is also being progressed following the permanent closure of the old N25 Westbound Diverge to the Dunkettle Interchange Roundabout - see photograph below.



Ongoing Works for Link C & Link M following the closure of the southern half of the old Dunkettle Interchange Roundabout along with the N25 Westbound diverge

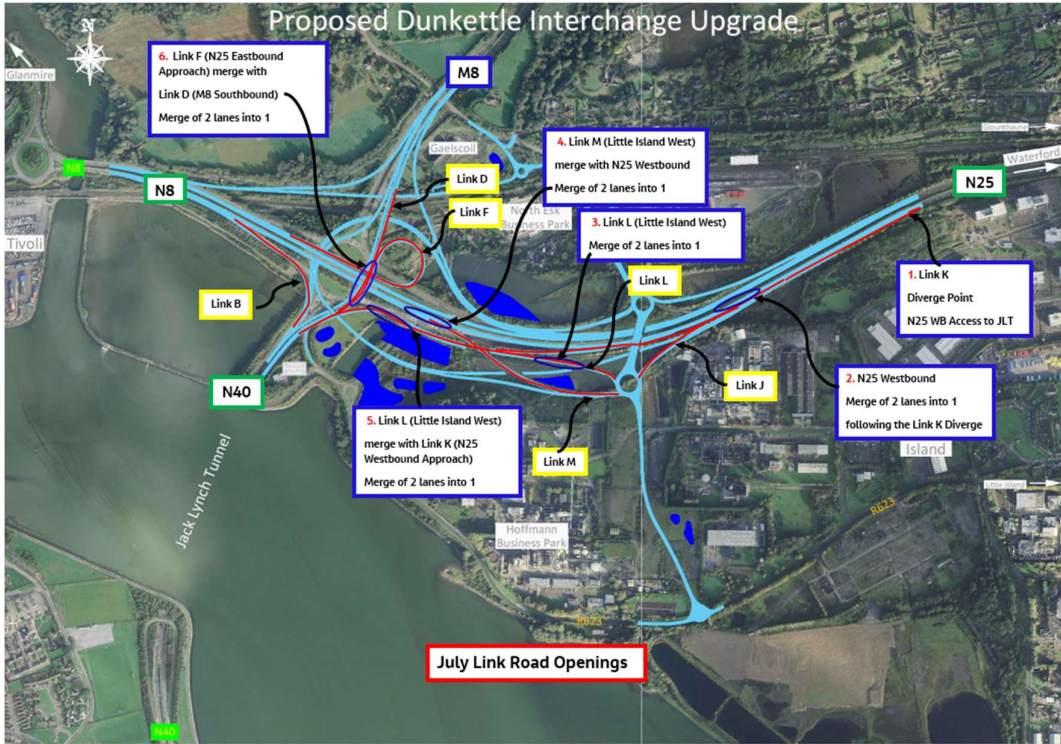
- Motorists are reminded that one set of traffic lights remain in place at the Northwest corner of the old Dunkettle Interchange Roundabout – these are required in order to provide safe access to

the remaining works areas. Motorists are also reminded that in general the temporary speed limit across the site is 60kph, with the exception of Link F which has a permanent speed limit of 30kph due to the curvature of this particular link – see photograph 1 above and the layout plan hereunder.



Location of the remaining traffic light at the Northwest corner of the old Dunkettle Interchange Roundabout and the local 30kph speed limit for Link F

- This week's video shows the new approach to the Dunkettle Interchange from the N25 Westbound with a number of key diverge and merge locations highlighted as per the layout plan hereunder.



Location of key merge and diverge points on the new road layout.

This week's video shows the new approach to the Dunkettle Interchange from the N25 Westbound with a number of key diverge and merge locations.



Dunkettle Live Traffic App



Click on the icon above to see the benefits of the Dunkettle Live App.



Dunkettle Live App: Download from [Apple App store](#) or from [Google Play store](#)

As always, if there are any queries or comments in relation to these works, please contact us at:
Phone: 1800 810077 (at any time), **Email:** roadconstruction@ccc-site.com.



Further information on the Dunkettle Scheme can be accessed www.dunkettle.ie.

Real time traffic information can be accessed via www.dunkettletraffic.ie or on the Dunkettle Live App ([Apple App store](#) and [Google Play store](#)).

New subscribers to the newsletter can register: www.dunkettle.ie/newslettersignup



[More at www.Dunkettle.ie](http://www.Dunkettle.ie)



Your email address is on a list that we use to keep you informed on the progress on the N40 and Dunkettle Interchange works.

Want to change how you receive these emails?
You can [update your preferences](#) or [unsubscribe from this list](#).
