

Dunkettle Progress Update

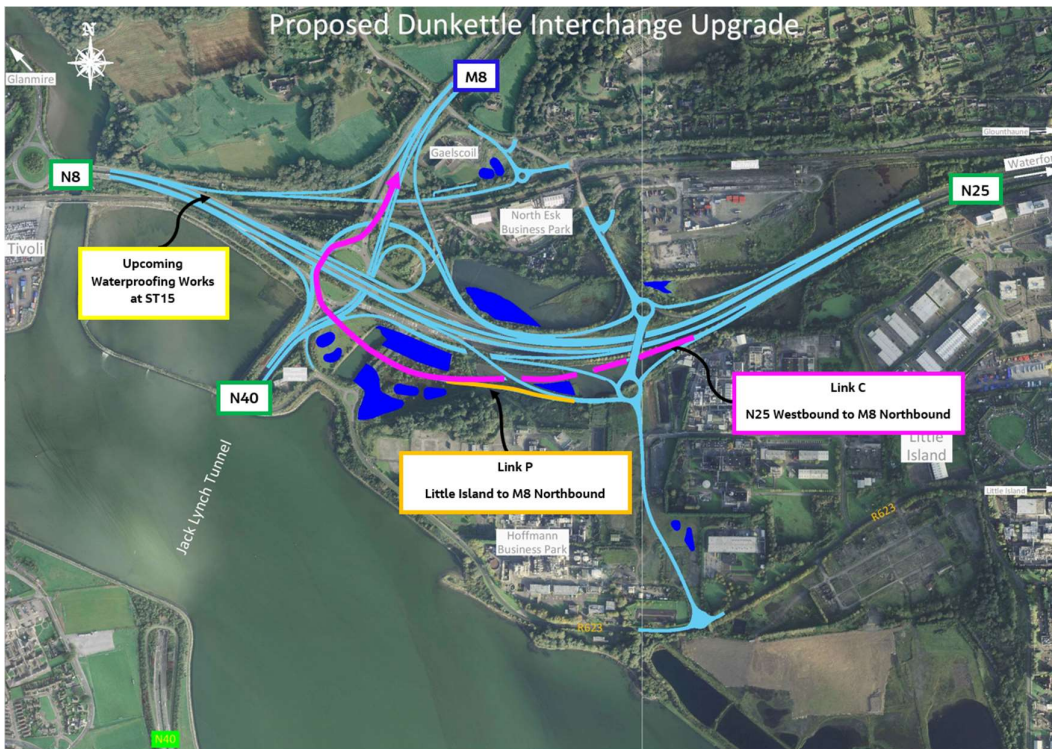
12th January 2024



Twitter

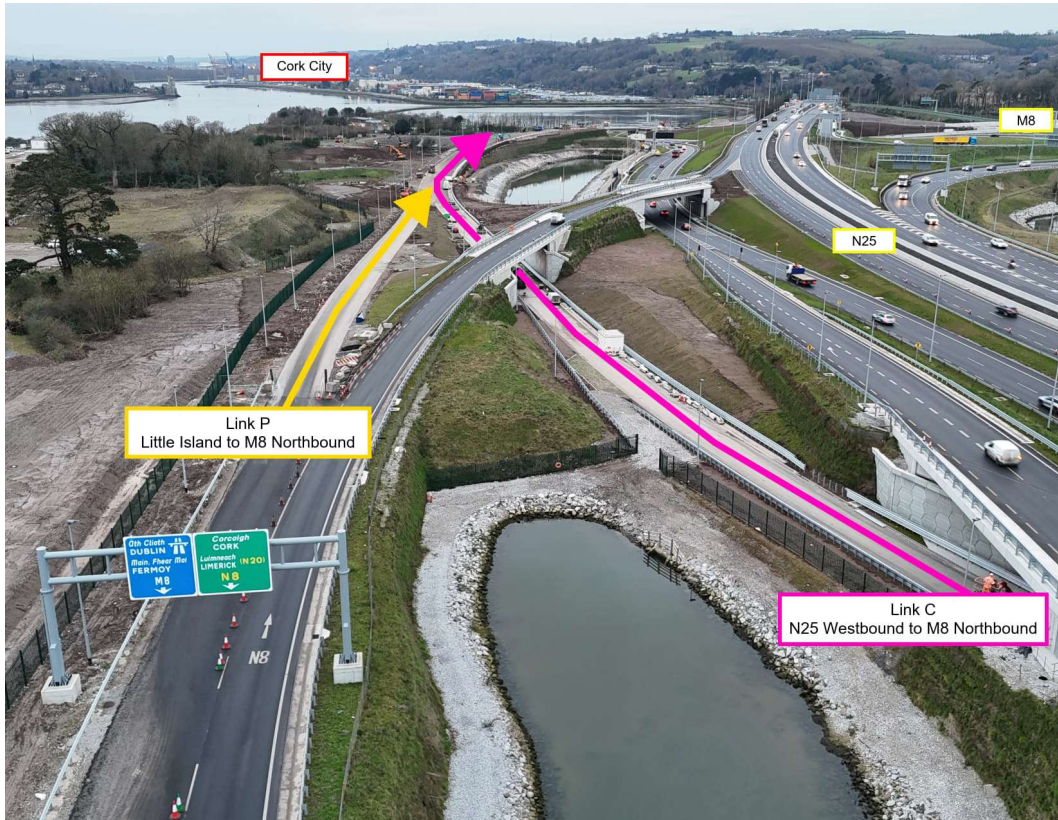


Website



- The layout plan above has Link C and Link P highlighted.
- Link C will cater for traffic on the N25 Westbound wishing to head north on the M8 Cork-Dublin Motorway. Link P will join with Link C and will pick up traffic from the Little Island area also wishing to head north on the M8.
- Link P is already complete and at present the main works focus on site is on completion of Link C.

- The aerial photograph below gives a good indication of progress being made in this area with installation of safety barrier, public lighting installation, footpath construction all continuing. We hope to progress final surfacing in this area over the coming weeks with Link C and Link P then scheduled to open in February 2024 – details to follow in future updates.



Ongoing works at Link C and Link P

- Subject to suitable weather conditions, waterproofing of Structure ST15 (see photograph below) on the N25 Eastbound is scheduled to get underway at 8pm on Thursday the 18th of January 2024. In order to progress the works the N25 Eastbound will be reduced to one lane and this lane restriction will remain in place from 8pm on Thursday the 18th of January 2024 until approximately lunchtime on Sunday the 21st of January 2024. These works will be progressed on a 24-hour basis in order to ensure that the N25 Eastbound reopens as planned on Sunday the 21st and the focus on Friday/weekend work is proposed in order to minimise disruption to traffic.



Area highlighted shows the extent of bridge deck waterproofing required

- In relation to programme, works remain on track for completion by the due date of February 2024.

Dunkettle Live Traffic App



Click on the icon above to see the benefits of the Dunkettle Live App.



Dunkettle Live App: Download from [Apple App store](#) or from [Google Play store](#)

As always, if there are any queries or comments in relation to these works, please contact us at:
Phone: 1800 810077 (at any time), **Email:** roadconstruction@ccc-site.com.

Further information on the Dunkettle Scheme can be accessed www.dunkettle.ie.

Real time traffic information can be accessed via www.dunkettletraffic.ie or on the Dunkettle Live App ([Apple App store](#) and [Google Play store](#)).

New subscribers to the newsletter can register: www.dunkettle.ie/newslettersignup



[More at www.Dunkettle.ie](http://www.Dunkettle.ie)



Your email address is on a list that we use to keep you informed on the progress on the N40 and Dunkettle Interchange works.

Want to change how you receive these emails?
You can [update your preferences](#) or [unsubscribe from this list](#).
