

Dunkettle Progress Update

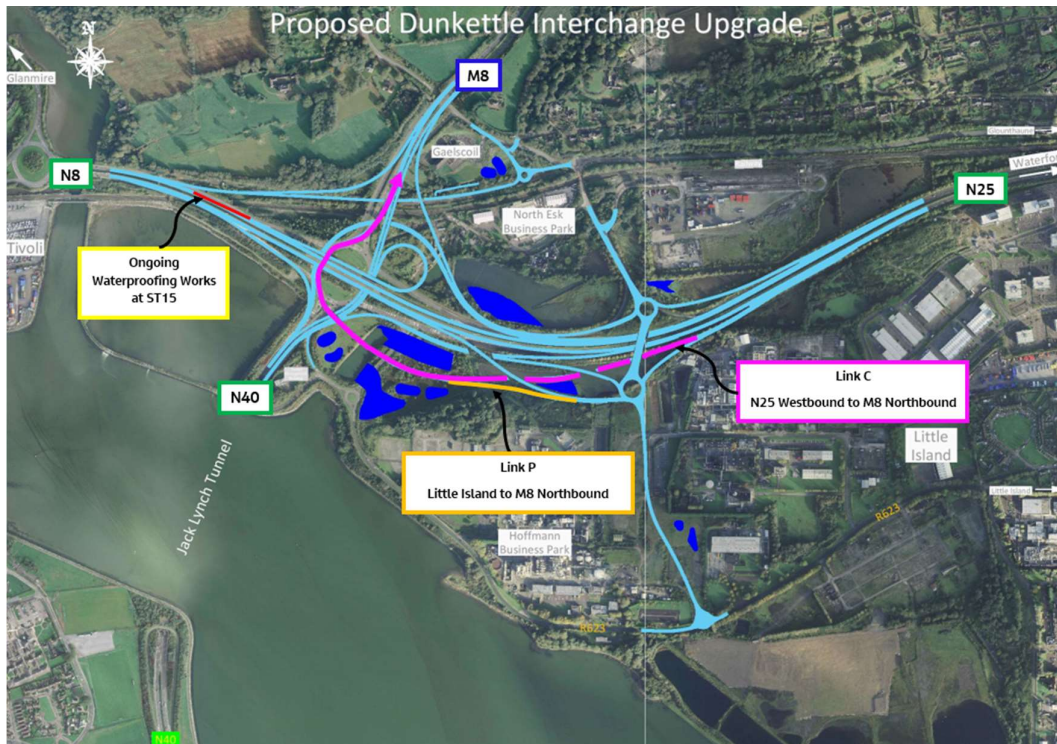
26th January 2024



Twitter



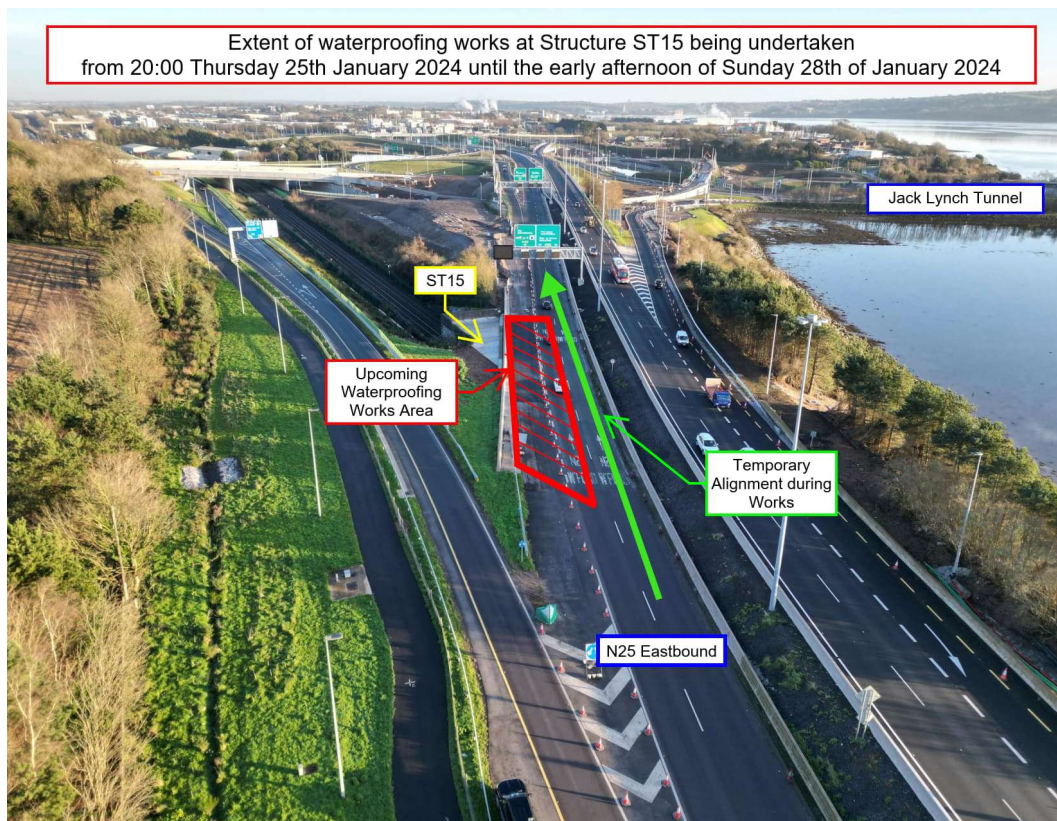
Website



- The waterproofing works at Structure ST15 (see photograph below) which were initially planned for last weekend are now underway. The N25 Eastbound has been reduced to one lane and this lane restriction will remain in place until this works element has been

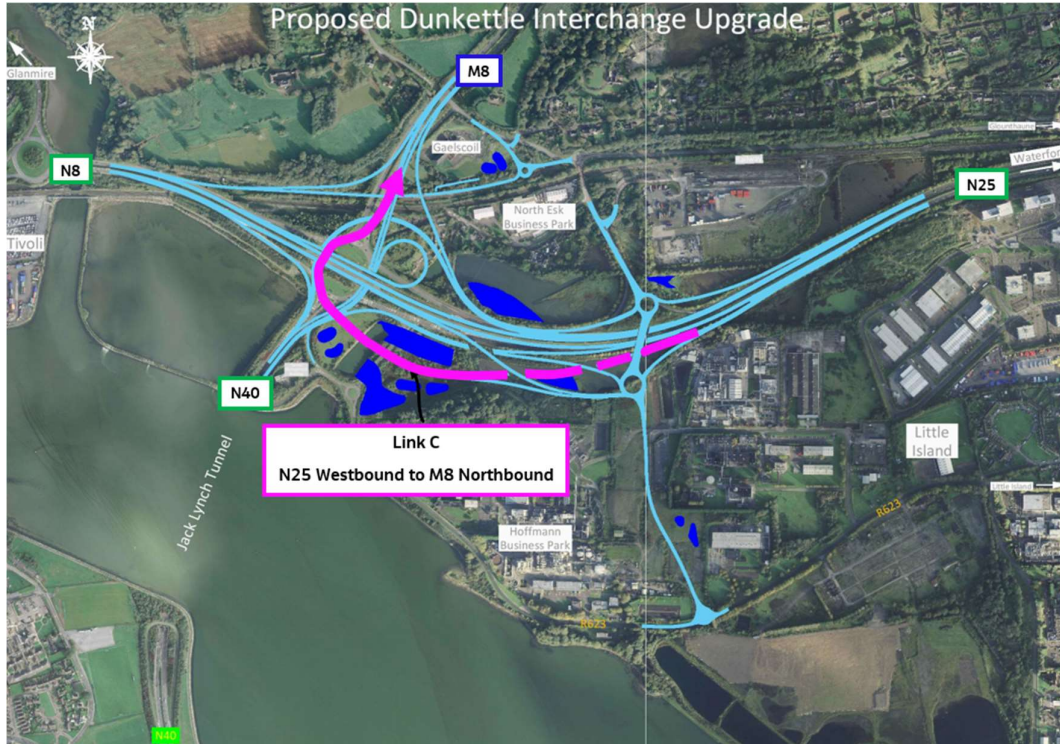
completed – we expect to have the N25 fully reopened to traffic by lunchtime on Sunday the 28th of January 2024.

- The works are being progressed mainly under weekend working in order to minimise disruption to traffic but additional time should be allowed for journeys on this section of the N25 Eastbound particularly during peak periods on today, Friday the 26th.



Area highlighted shows the extent of bridge deck waterproofing required

- The main works focus continues to be on completion of Link C shown highlighted in the layout plan below.



Link C will be the new route for N25 Westbound traffic wishing to head North on the M8

- Surfacing works are now well underway (see photograph below) and we hope to fully complete these surfacing works in this area under night-time working during week commencing Monday the 29th of January 2024.



Ongoing works at Link C and Link P

- Subject to suitable weather conditions, we expect a full week of night-time working during week commencing Monday the 29th of January 2024 in order to complete surfacing works in a number of localised areas in addition to Link C. These works are being progressed under night-time working in order to minimise disruption to traffic.

- Overall, works remain on track for completion by the due date of February 2024.

Dunkettle Live Traffic App



Click on the icon above to see the benefits of the Dunkettle Live App.



Dunkettle Live App: Download from [Apple App store](#) or from [Google Play store](#)

As always, if there are any queries or comments in relation to these works, please contact us at:
Phone: 1800 810077 (at any time), **Email:** roadconstruction@ccc-site.com.



Further information on the Dunkettle Scheme can be accessed www.dunkettle.ie.

Real time traffic information can be accessed via www.dunkettletraffic.ie or on the Dunkettle Live App ([Apple App store](#) and [Google Play store](#)).

New subscribers to the newsletter can register: www.dunkettle.ie/newslettersignup



[More at www.Dunkettle.ie](http://www.Dunkettle.ie)



Your email address is on a list that we use to keep you informed on the progress on the N40 and Dunkettle Interchange works.

Want to change how you receive these emails?

You can [update your preferences](#) or [unsubscribe from this list](#).
